

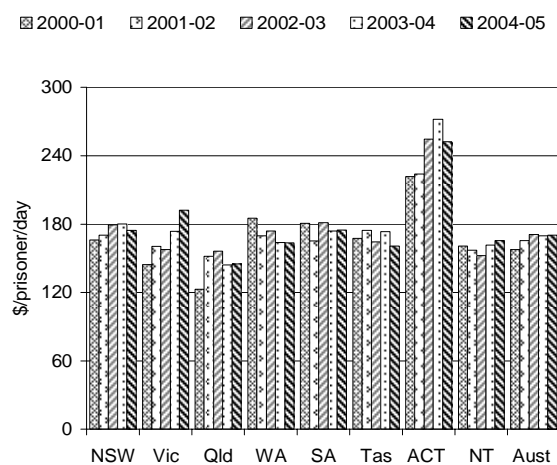
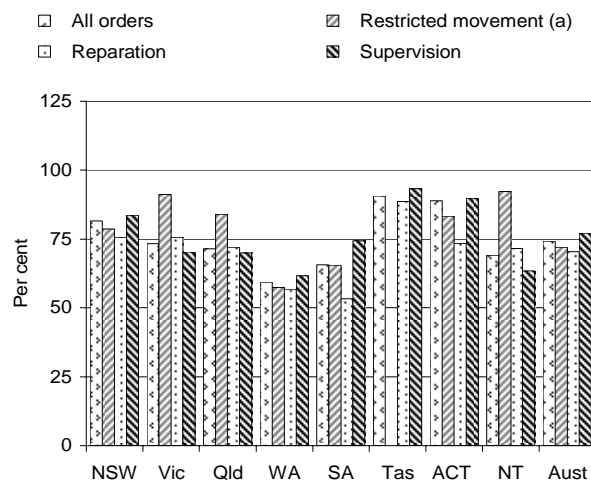
CORRECTIVE SERVICES (CHAPTER 7)

- The focus of this chapter is on prison custody and a range of community corrections orders and programs for adult offenders. Related chapters include police services, court administration and the justice preface.
- Nationally, expenditure on corrective services (net of revenue from own sources) was \$2.0 billion in 2004-05. Expenditure on prisons was \$1.7 billion, community corrections \$221.6 million and prisoner transport and escort services \$71.8 million (p. 7.3).
- In 2004-05, on average, 24 092 people per day were held in Australian prisons and an additional 891 people on average were serving periodic detention orders in NSW and the ACT. Nationally, 17.9 per cent of the total prisoner population (excluding periodic detainees) were held in privately operated facilities (p. 7.4).
- Nationally, the total imprisonment rate (prisoners per 100 000 adults) was 155.0 (p. 7.4). The rate for Indigenous prisoners was 1957.1 and the rate for non-Indigenous prisoners was 118.0 (p. 7.5).
- On average, 52 506 offenders per day were serving community corrections orders in Australia in 2004-05 (p. 7.7). Nationally, the community corrections rate (offenders per 100 000 adults) was 337.9 compared to 331.6 in 2003-04 (p. 7.7).
- Other indicators include unnatural deaths in custody (p. 7.12–13), out-of-cell hours (p. 7.14), prisoner employment (p. 7.15), community work by offenders (p. 7.16), prisoner education (p. 7.16–17), recurrent and capital cost per offender (p. 7.19–21), offender to staff ratios (p. 7.22–23), prison utilisation rates (p. 7.23–24) and escapes/absconds rate (p. 7.25).

Selection of results

Completion of community corrections orders, by type of order, 2004-05 (p. 7.27)

Real recurrent cost per prisoner per day (2004-05 dollars) (p. 7.20)



Progress since the 2005 Report

The Corrections chapter has been enhanced by:

- a revised Performance Indicator Framework
- a revised set of objectives for corrective services.

Data for charts on previous page

Completion of community orders, 2004-05 (per cent)

	NSW	Vic	Qld	WA	SA	Tas	ACT ^a	NT	Aust
All orders	81.6	73.4	71.4	59.3	65.5	90.6	88.9	69.2	74.3
Restricted movement ^a	78.7	91.2	84.0	57.3	65.4	..	83.3	92.2	72.1
Reparation	75.6	75.7	72.1	56.8	53.3	88.7	73.4	71.6	70.5
Supervision	83.6	70.3	69.9	61.7	74.4	93.3	89.8	63.4	77.1

^a ACT rates are based on only a small number of restricted movement orders per year. Therefore, they are not indicative of long term trends and may fluctuate from year to year. .. Not applicable.

Source: State and Territory governments (unpublished); table 7A.18.

Real recurrent cost per prisoner per day (2004-05 dollars)^a

	NSW ^b	Vic	Qld ^c	WA	SA	Tas	ACT ^b	NT	Aust ^b
2000-01	165.9	144.5	122.8	185.2	180.8	167.3	221.8	160.8	157.8
2001-02	170.3	160.3	151.7	169.5	165.3	174.3	223.9	157.1	165.6
2002-03	179.3	157.6	156.3	173.9	181.3	164.4	254.5	152.4	170.6
2003-04	180.3	173.6	144.3	163.7	173.8	173.2	271.8	161.6	169.5
2004-05	174.5	192.2	145.2	163.6	174.6	160.8	252.3	165.3	170.1

^a Data for previous years were adjusted to 2004-05 dollars using the GDP price deflator. ^b ACT figures include all ACT prisoners whether in the ACT or NSW prisons. NSW figures include ACT prisoners held in NSW prisons. Australian figures are calculated so that ACT prisoners held in NSW prisons are not double counted. ^c Recurrent cost per prisoner for Queensland is affected by the inclusion of additional corporate overhead costs as of and including 2001-02.

Source: State and Territory governments (unpublished); table 7A.8.

[END]

Background information: Lawrence McDonald, Head of Secretariat 03 9653 2178/0421 584 905

Other information: Clair Angel, Media and Publications 02 6240 3239/0417 665 443

Please do not approach other parties for comment before Monday 30 January 2006.

Media copies of this report are available from Clair Angel on 02 6240 3239.

Hard copies of this publication are available from Pirion/J.S. McMillan (ph: 02 9795 1200 or email custserv@jismcmillan.com.au). The report will be available via the Internet at <http://www.pc.gov.au/> on the morning of Tuesday 31 January 2006.

Tables with an 'A' prefix (eg table 7A.5) are in the electronic attachments on the CD-ROM or on the Review website.