

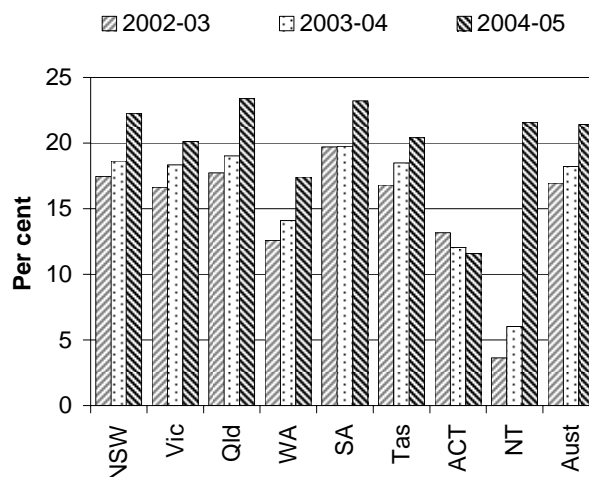
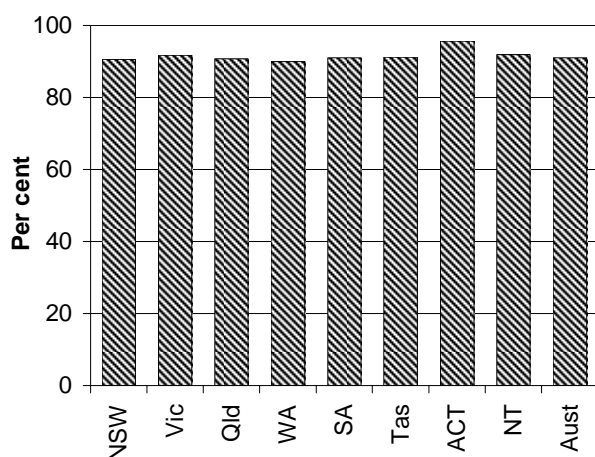
PRIMARY AND COMMUNITY HEALTH (CHAPTER 10)

- The primary and community health sector is the part of the healthcare system most frequently accessed by Australians. It is important in providing preventative care, diagnosis and treatment of illness, and referral to other healthcare services. The sector includes general practice and community health services.
- Australian Government expenditure on GP services was around \$4.3 billion in 2004-05, or about \$213 per person in Australia (p.10.4). Government expenditure on community and public health was \$4.9 billion in 2003-04 (p 10.7).
- In June 2005, 72.0 per cent of general practices were accredited with Australian General Practice Accreditation Limited Australia-wide (p 10.35).
- The effectiveness of primary and community healthcare has a significant influence on the rates of hospitalisation for vaccine preventable conditions. Australia wide, the age standardised hospital separation rate for all vaccine preventable conditions was 0.8 per 1000 people in 2003-04. Nationally, influenza and pneumonia accounted for 82.5 per cent of age standardised hospitalisations for vaccine preventable conditions in 2003-04 (p 10.49).

Selection of results

Children aged 12 months to less than 15 months who were fully immunised, 2005^{a, b, c} (p. 10.41)

Older people who received a voluntary health assessment^d (p. 10.38)



See over for data and footnotes.

See over for data and footnotes.

- Around 91.0 per cent of Australian children aged 12 months to less than 15 months at 30 June 2005 were assessed as fully immunised (p. 10.40).
- Nationally, the proportion of older people who received a voluntary health assessment increased from 17.0 per cent in 2002-03 to 21.4 per cent in 2004-05 (p. 10.38).

Progress since 2005 Report

- Data on the Pharmaceutical Benefits Scheme (PBS) are included for the first time, including the 'availability of PBS medicines' indicator.
- The 'availability of GPs by region' indicator is now reported by State and Territory.
- The 'management of diabetes' indicator, which was previously reported as an outcome has been split into 'management of diabetes' and 'hospitalisations for diabetes' indicators.
- Indigenous data are now reported for the 'hospitalisations for vaccine preventable conditions' and 'hospitalisations for diabetes' indicators. These data were previously reported in the Public hospitals chapter (chapter 9).

Data for charts on previous page

	NSW	Vic	Qld	WA	SA	Tas	ACT	NT	Aust
<i>Children aged 12 months to less than 15 months who were fully immunised 2005^{a, b, c}</i>									
2005	90.6	91.8	90.8	90.0	91.1	91.2	95.7	91.9	91.0
<i>Older people who received a voluntary health assessment^d</i>									
2002-03	17.5	16.6	17.7	12.6	19.7	16.8	13.2	3.6	17.0
2003-04	18.6	18.3	19.0	14.1	19.8	18.5	12.0	6.0	18.2
2004-05	22.3	20.1	23.4	17.4	23.2	20.4	11.6	21.6	21.4

^a Coverage measured at 30 June for children turning 12 months of age by 31 March, by State or Territory in which the child was located. ^b The Australian Childhood Immunisation Register includes all children under 7 years of age who are registered with Medicare. By the age of 12 months, over 98 per cent of Australian children have been registered with Medicare. ^c There may be some under-reporting by providers, so vaccine coverage estimates calculated using Australian Childhood Immunisation Register data are considered minimum estimates. ^d Older people are defined as non-Indigenous people aged 75 years or over and Indigenous people aged 55 years or over, excluding hospital inpatients and people living in aged care facilities.

Source: Department of Health and Ageing (unpublished); figure 10.18 and table 10A.29; Department of Health and Ageing (unpublished); figure 10.19 and table 10A.31.

[END]

Background information: Lawrence McDonald, Head of Secretariat 03 9653 2178/0421 584 905
Other information: Clair Angel, Media and Publications 02 6240 3239/0417 665 443

Please do not approach other parties for comment before Monday 30 January 2006.

Media copies of this report are available from Clair Angel on 02 6240 3239.

Hard copies of this publication are available from Pirion/J.S. McMillan (ph: 02 9795 1200 or email custserv@jsmcmillan.com.au). The report will be available via the Internet at <http://www.pc.gov.au/> on the morning of Tuesday 31 January 2006.

Tables with an 'A' prefix (eg table 10.A5) are in the electronic attachments on the CD-ROM or on the Review website.