

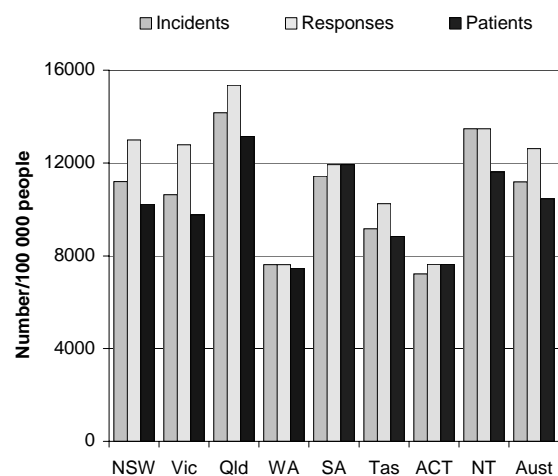
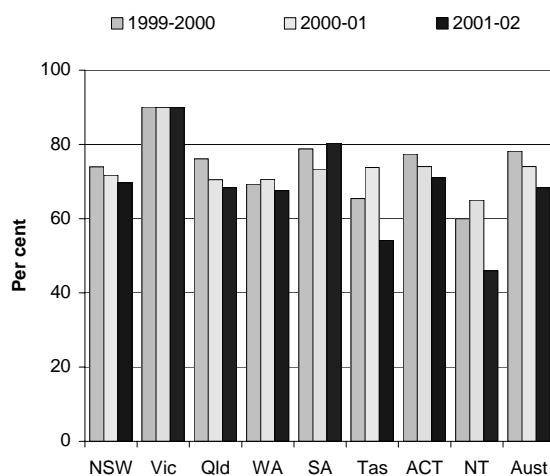
EMERGENCY MANAGEMENT (CHAPTER 8)

- Reporting on emergency management focuses on emergency services provided or funded by governments which involve fire and ambulance service providers. Across Australia, nearly 21 000 full time equivalent paid staff (p 8.14-15) and over 500 000 volunteers participate each year in the management of a broad range of emergency situations and disasters. In fire and ambulance services alone, there were 210 329 volunteers in 2001-02 (p. 8.16). The input by emergency services volunteers is particularly important in rural and remote areas of Australia.
- There were a total of 354 775 reports to fire authorities in 2001-02 (table 8A.2). Approximately \$1.3 billion was spent in 2001-02 on fire services (p. 8.10). Ambulance services attended more than 2 million incidents nationally in 2001-02 (p. 8.14). Approximately \$970 million was spent on ambulance services (p. 8.12).

Selection of results

Structure fires contained to the object/room of origin<sup>a, b, c, d, e, f</sup> (p. 8.38)

Reported ambulance incidents, responses and patients<sup>a, b, c, d, e, f</sup> (p. 8.43)



See over for data and footnotes.

See over for data and footnotes.

- Nationally, 68.4 per cent of fires were contained to the object or room of origin in 2001-02. Across jurisdictions, the proportion of fires contained to the object or room of origin was highest in Victoria (90.0 per cent) and lowest in the NT (46.0 per cent) in 2001-02 (p. 8.38).
- Nationally, there were 11 182 ambulance incidents per 100 000 people, 12 620 responses per 100 000 people and 10 455 patients per 100 000 people in 2001-02. Across jurisdictions, the number of incidents per 100 000 people was highest in Queensland (14 157) and lowest in the ACT (7220) in 2001-02. The number of responses per 100 000 people was highest in Queensland (15 352) and lowest in WA (7623), and the number of patients per 100 000 people was highest in Queensland (13 147) and lowest in WA (7474) (p. 8.43).

[MORE]

## Progress since the 2002 Report

The year saw the quality of data improve through revised definitions in several areas, including ambulance staff numbers and caseload, first time reporting of landscape fire incidents and more complete reporting of cardiac arrest survival rates. The Review intends to include the performance of agencies involved in road accident rescues in future years.

## Data for charts on previous page

Structure fires contained to the object/room of origin (per cent)<sup>a</sup>

	NSW <sup>a</sup>	Vic <sup>b</sup>	Qld <sup>c</sup>	WA	SA <sup>d</sup>	Tas	ACT <sup>e</sup>	NT	Aust <sup>f</sup>
1999-2000	73.9	90.1	76.1	69.3	78.8	65.4	77.4	60.0	78.2
2000-2001	71.7	90.0	70.5	70.6	73.3	73.8	74.0	65.0	74.0
2001-2002	69.6	90.0	68.3	67.6	80.3	54.2	71.0	46.0	68.4

<sup>a</sup> NSW data exclude the Rural Fire Service, but include responses to calls outside the NSW Fire Brigades' designated fire districts. Due to industrial bans, 1999-2000 data are derived from a sample representing 80 per cent of the incidents, and 2000-01 data are derived from a sample representing 85 per cent of the incidents. <sup>b</sup> Victorian data exclude the Country Fire Authority. <sup>c</sup> Queensland data for 2001-02 exclude incidents solely attended by the Rural Fire Service. <sup>d</sup> SA data exclude the Country Fire Service. <sup>e</sup> Industrial bans in the ACT mean data for 1999-2000 are based on extrapolated results. Data exclude the ACT Bushfire Service. <sup>f</sup> Average for Australia excludes rural fire service data for some years as per the jurisdictions' caveats.

Source: State and Territory governments (unpublished); figure 8.18; table 8A.17.

Reported ambulance incidents, responses and patients (number per 100 000 people)<sup>a</sup>

	NSW <sup>b</sup>	Vic <sup>c</sup>	Qld <sup>d</sup>	WA <sup>e</sup>	SA	Tas	ACT	NT <sup>f</sup>	Aust
2001-02									
Incidents	11 194	10 625	14 157	7 623	11 427	9 167	7 220	13 468	11 182
Responses	12 994	12 777	15 352	7 623	11 932	10 247	7 636	13 468	12 620
Patients	10 225	9 758	13 147	7 474	11 932	8 842	7 636	11 605	10 455

<sup>a</sup> An incident is an event that results in a demand for ambulance resources to respond. An ambulance response is a vehicle or vehicles sent to an incident. There may be multiple responses/vehicles sent to a single incident. <sup>b</sup> NSW currently does not triage emergency calls. Urgent incident and response caseload are included in emergency caseload figures. <sup>c</sup> In Victoria, incidents, responses and patients data include road incidents only. In 2001-02 there were 6774 air ambulance (fixed and rotary wing) incidents involving 6030 ambulance patients. Data exclude public duties. <sup>d</sup> Incidents, responses and patients data for Queensland are from the Ambulance Integrated Management System (AIMS database). Casualty room attendances for Queensland are not included in the response count. <sup>e</sup> WA does not have a policy of automatically dispatching more than one unit to an incident unless advised of more than one patient. Separate statistics are not kept for incidents and responses. Numbers shown under incidents are cases. <sup>f</sup> For the NT, a response is counted as an incident.

Source: State and Territory governments (unpublished); figure 8.15; table 8A.13.

[END]

**Background information:** Dr Robyn Sheen, Assistant Commissioner 03 9653 2184/0419 637 068

**Other information:** Ms Clair Angel, Media and Publications 02 6240 3239/0417 665 443

**Please do not approach other parties for comment before Thursday, 6 February 2003.**

Media copies of this report are available from Clair Angel on 03 9653 2244.

Other requests for this report should be directed to Government Info Shops. The report can also be accessed via the Internet at <http://www.pc.gov.au/> on the morning of release.