

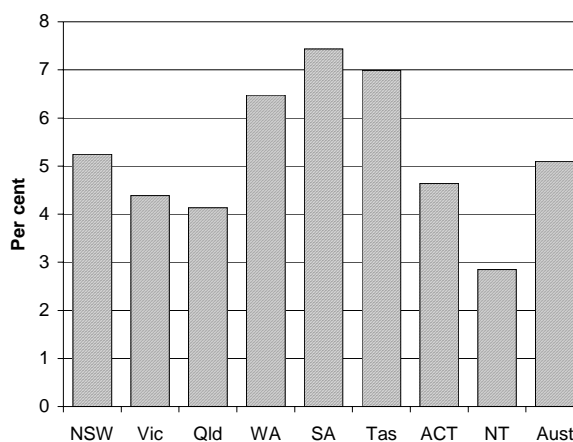
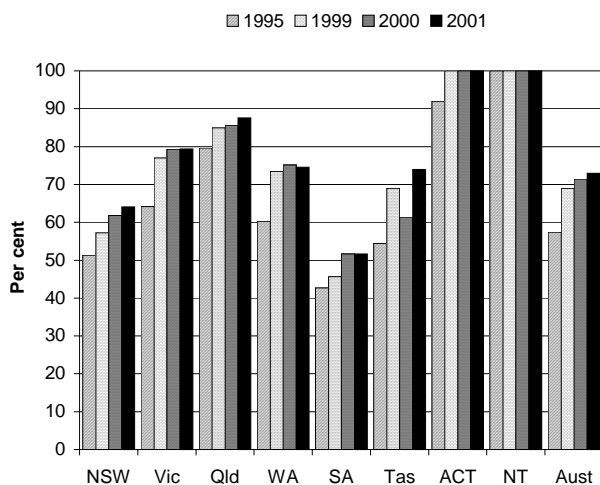
## SERVICES FOR PEOPLE WITH A DISABILITY (CHAPTER 13)

- The focus of reporting on services for people with a disability is on services provided under the Commonwealth/State Disability Agreement (CSDA), which are targeted at people under the age of 65 years with a severe or profound disability who require ongoing support. In 1998, the most recent data available, over 626 500 people aged 5–64 years had a profound or severe core activity restriction (table 13A.1).
- Over 46 000 consumers received services provided under the CSDA (excluding employment services<sup>1</sup>) on the snapshot day (a single day of collection) in 2001 (p. 689). In real terms, total government expenditure under the CSDA was \$2.5 billion in 2000-01, a real increase of 5.3 per cent from 1999-2000. Of all CSDA funding in 2000-01, 71.1 per cent came from State and Territory governments and 28.9 per cent came from the Commonwealth Government (p. 690).

### Selection of results

Consumers of CSDA funded community based or 'in home' accommodation support services, as a per cent of all consumers of accommodation services<sup>a</sup> (p. 696)

Consumers of CSDA employment services relative to the potential population, 2000<sup>b</sup> (p. 709)



See over for data and footnotes.

See over for data and footnotes.

- Nationally, 73 per cent of accommodation clients had community based accommodation or 'in-home' support in 2001, an increase of 5.8 percentage points from 1997. The ACT and the NT had the highest proportion of accommodation clients receiving community based care or support (both 100 per cent) in 2001 and SA had the lowest (51.6 per cent) (p. 696).

<sup>1</sup> Information on employment services for 2001 was not available at the time of publication. This information will be available on the Review web page after publication of the Report ([www.pc.gov/service/gsp](http://www.pc.gov/service/gsp)).

- Nationally, 5.1 per cent of consumers of the estimated potential population were using employment services in 2000. Across jurisdictions, the proportion was highest in SA (7.4 per cent) and lowest in the NT (2.8 per cent) (p. 708-9).

## Progress since 2001 Report

The 2002 Report includes data on consumers of CSDA accommodation support services, in 2001, by rural and remote location for the first time. More data are reported on Indigenous Australians, specifically consumers of day activity services by Indigenous status, in 2001. Social participation (1998 data) and participation in employment (2000 data) of people with a disability are also reported this year (2001 data were not available).

## Data for charts on previous page

	NSW	Vic	Qld	WA	SA	Tas	ACT	NT	Aust
<i>Consumers of CSDA funded community based or 'in home' accommodation support service (per cent of all accommodation consumers)<sup>a</sup></i>									
1997	53.9	70.3	79.6	58.2	46.6	56.1	100.0	100.0	67.2
1999	57.2	77.0	85.0	73.4	45.7	69.0	100.0	100.0	69.0
2000	61.8	79.3	85.6	75.2	51.6	61.3	100.0	100.0	71.4
2001	64.1	79.4	87.6	74.6	51.6	74.0	100.0	100.0	73.0
<i>Consumers of CSDA employment services relative to the potential population (per cent)<sup>b</sup></i>									
2000	5.2	4.4	4.1	6.5	7.4	7.0	4.6	2.8	5.1

<sup>a</sup> Consumer data are estimates after use of a statistical linkage key to account for individuals who received more than one service on the snapshot day. Where the accommodation service type was inconsistently recorded for the same consumer, the consumer was counted as receiving an 'institutional/large residential or hostel' accommodation support service. Totals may not be the sum of the components because individuals may have accessed services from more than one jurisdiction on the snapshot day. Data for consumers of CSDA services funded by the States and Territories exclude psychiatric services specifically identified by the jurisdiction. Community based or 'in-home' accommodation support services are group homes, attendant care, outreach/other 'in-home'/drop-in support, alternative family placement and other accommodation. Data for 1995 are based on services received (recipients, not consumers), while the 1999-2001 data are consumer data. <sup>b</sup> Consumer data are estimates collected on the snapshot day. A statistical linkage key was used to account for individuals who received more than one service on the snapshot day. The potential population for employment services is the number of people aged 15-64 years with a severe or profound core activity restriction, multiplied by both the Indigenous factor and the labour force participation rate for that jurisdiction. Due to this adjustment the sum of the potential populations of the jurisdictions is not necessarily equal to the national total. The 2000 data are consumer data.

Sources: AIHW (2001a); figure 13.3; table 13A.9. AIHW (2000b); figure 13.16; table 13A.12.

[END]

**Background information:** Dr Robyn Sheen, Assistant Commissioner 03 9653 2184/0419 637 068

**Other information:** Ms Clair Angel, Media and Publications 02 6240 3239/0417 665 443

**Please do not approach other parties for comment before Wednesday 30 January 2002.**

Media copies of this report are available from Clair Angel on 03 9653 2244.

Other requests for this report should be directed to Government Info Shops. The report can also be accessed via the Internet at <http://www.pc.gov.au/> on the morning of release.