

Under embargo until 1.00am on Friday, 29 January 2010

For personal use only. Third parties should not be approached until the embargo is lifted.

### SERVICES FOR PEOPLE WITH DISABILITY (CHAPTER 14)

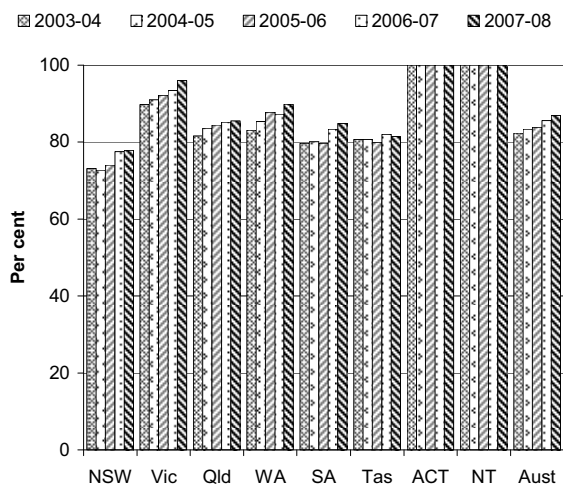
- The new *National Disability Agreement* (NDA), effective from 1 January 2009, provides the national framework and key areas of reform for the provision of government support and services for people with disability and their carers. The NDA replaced the third *Commonwealth State Territory Disability Agreement* (CSTDA). The focus of this chapter is on the services and supports provided under these agreements.
- Total government expenditure on CSTDA/NDA services was \$5.2 billion in 2008-09, a real increase of 5.6 per cent on the expenditure in 2007-08 (\$5.0 billion) (p. 14.10). Of all CSTDA/NDA funding in 2008-09, 71.1 per cent came from State and Territory governments and 28.9 per cent came from the Australian Government (p. 14.10).
- The estimated number of people aged under 65 years in Australia with a profound or severe core activity limitation was 731 550 in 2007-08 (table 14A.12). Of these people, 31.8 per cent used a service provided under the CSTDA (p. 14.15).

### Objectives of services for people with disability

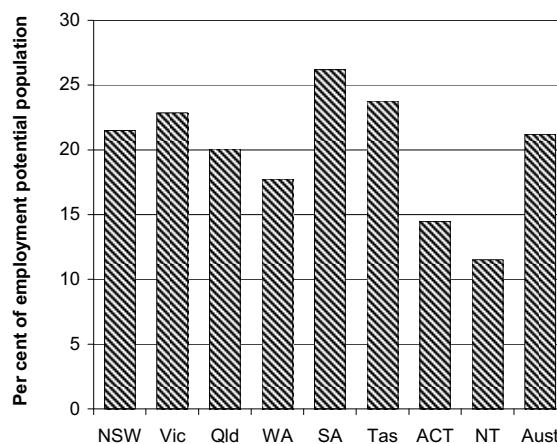
- The Australian, State and Territory governments aim to ensure that people with disability and their carers have an enhanced quality of life and participate as valued members of the community.

### Selection of results

Users of community accommodation and care services as a proportion of all CSTDA funded accommodation support service users<sup>a</sup> (p. 14.48)

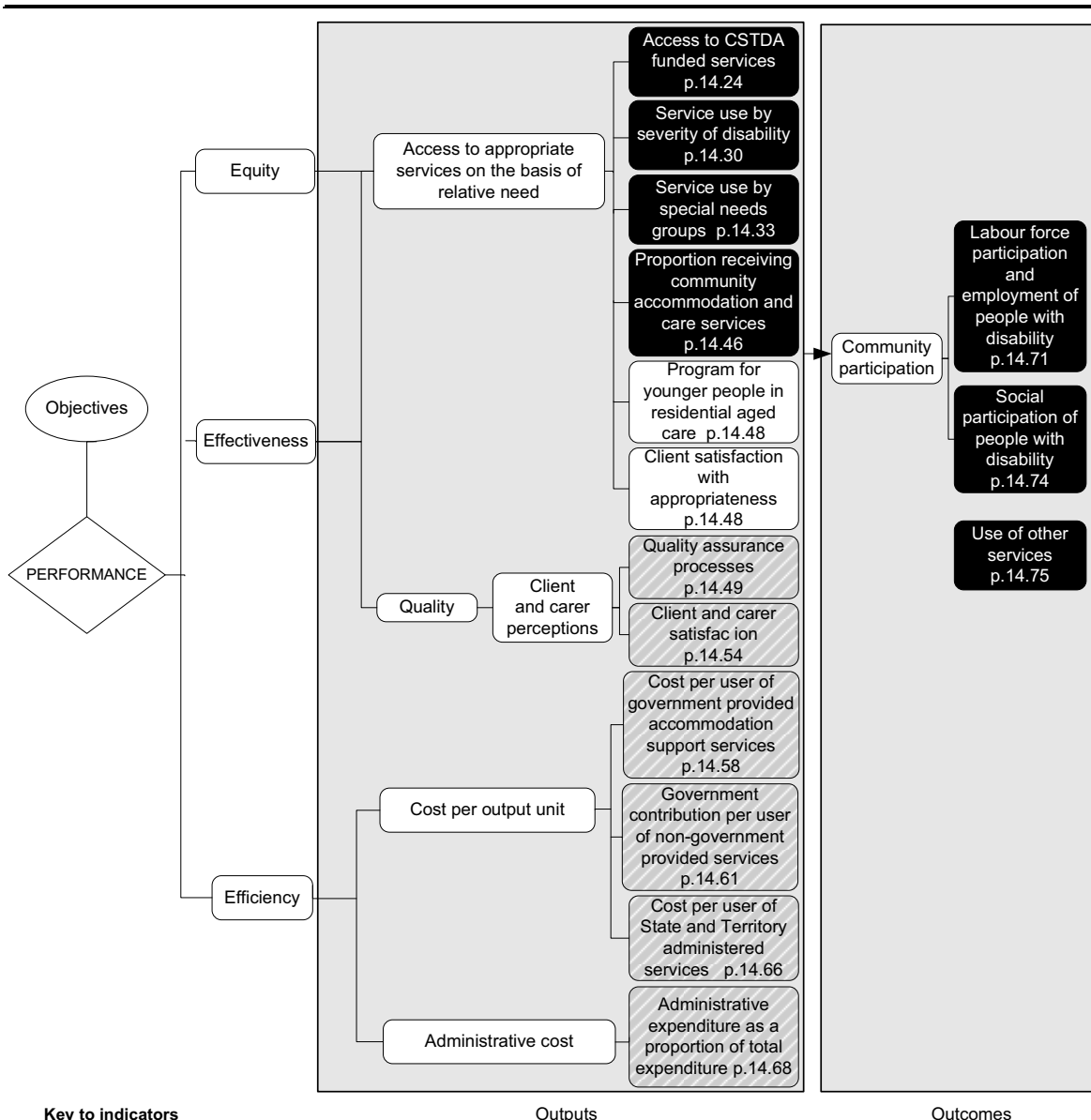


Users of CSTDA funded employment services as a proportion of the estimated potential population for employment services, 2007-08<sup>a</sup> (p. 14.30)



<sup>a</sup> Data and caveats for these figures are available electronically on the CD-ROM enclosed with the Report and from the website for the Review of Government Service Provision ([www.pc.gov.au/gsp/reports/rogs/2010](http://www.pc.gov.au/gsp/reports/rogs/2010)). Data may be subject to revision. The most recent data will be available on the Review website. An explanation of the potential population is on p. 14.33 of the Report.

# Performance indicators for services for people with disability (figure 14.9, p. 14.23)



**Key to indicators**

- Text** Data for these indicators comparable, subject to caveats to each chart or table
- Text** Data for these indicators not complete or not directly comparable
- Text** These indicators yet to be developed or data not collected for this Report: chapter contains explanatory text

[MORE]

## Developments in reporting since the 2009 Report

- Further refinement of the potential populations used to derive the 'Service use by special needs groups' measures; these populations are used to account for differences in the need for services across the relevant groups.
- Redevelopment of the quality assurance processes section to include information for jurisdictions on their legislative frameworks that govern service quality, features of their quality assurance systems and the relevant disability service standards that apply.
- Inclusion of a 'yet to be developed' indicator on the program for younger people in residential aged care (YPIRAC) and additional descriptive information on the YPIRAC program and on admissions of younger people to permanent residential aged care.

[END]

---

**Background information:** Lawrence McDonald, Head of Secretariat 03 9653 2178/0421 584 905

**Other information:** Clair Angel, Media and Publications 02 6240 3239/0417 665 443

**Please do not approach other parties for comment before Friday, 29 January 2010.**

*Media copies of this report are available from Clair Angel on 02 6240 3239.*

*Hard copies of this publication are available from Canprint Communications (ph: 1300 889 873 or email [sales@infoservices.com.au](mailto:sales@infoservices.com.au)). The report will be available via the Internet at [www.pc.gov.au](http://www.pc.gov.au) on the morning of Friday 29 January 2010.*

*Tables with an 'A' suffix (eg table 14A.5) are in the attachments on the CD-ROM or on the Review website.*