

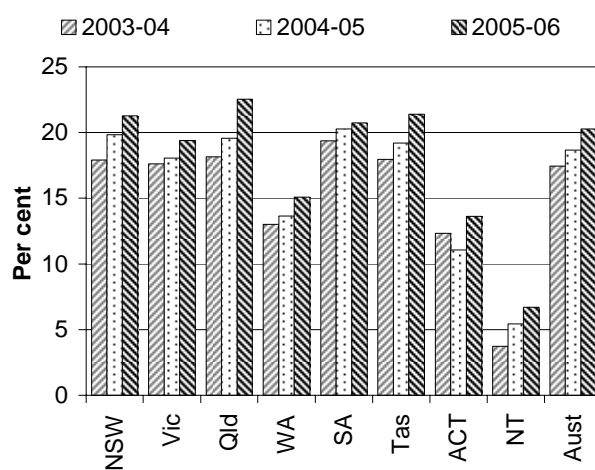
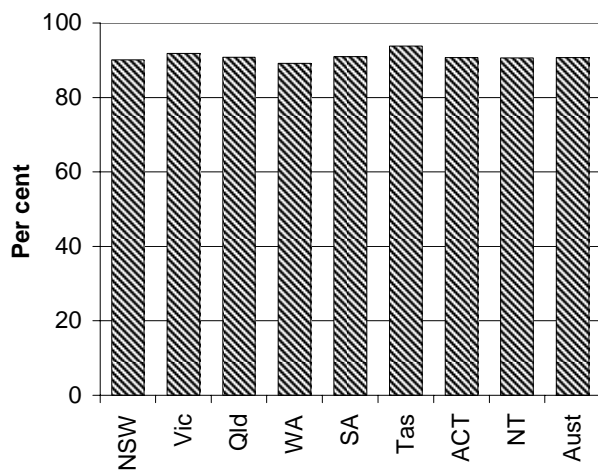
PRIMARY AND COMMUNITY HEALTH (CHAPTER 10)

- The primary and community health sector is the part of the healthcare system most frequently accessed by Australians. It is important in providing preventative care, diagnosis and treatment of illness, and referral to other healthcare services. The sector includes general practice and community health services.
- Australian Government expenditure on GP services was around \$4.9 billion in 2005-06, or about \$239 per person in Australia (p. 10.4). Total Government expenditure on community and public health was \$5.6 billion in 2004-05 (p. 10.6).
- The effectiveness of primary and community healthcare has an influence on the rates of hospitalisation for vaccine preventable conditions. Australia wide, the age standardised hospital separation rate for all vaccine preventable conditions was 0.7 per 1000 people in 2004-05. Nationally, influenza and pneumonia accounted for 77.6 per cent of age standardised hospitalisations for vaccine preventable conditions in 2004-05 (p. 10.46).

Selection of results

Children aged 12 months to less than 15 months who were fully immunised, 2006<sup>a, b, c</sup> (p. 10.39)

Older people who received a voluntary health assessment<sup>d</sup> (p. 10.35)



See over for data and footnotes.

See over for data and footnotes.

- Around 90.7 per cent of Australian children aged 12 months to less than 15 months at 30 June 2006 were assessed as fully immunised (p. 10.38).
- Nationally, the proportion of older people who received a voluntary health assessment increased from 17.5 per cent in 2003-04 to 20.3 per cent in 2005-06 (p. 10.35).

Progress since 2006 Report

- Data are reported for the 'availability of dentists' indicator for the first time.

- Indigenous data are reported for the 'hospitalisations for vaccine preventable conditions', 'potentially preventable acute conditions' and 'potentially preventable chronic conditions' indicators.

## Data for charts on previous page

	NSW	Vic	Qld	WA	SA	Tas	ACT	NT	Aust
<i>Children aged 12 months to less than 15 months who were fully immunised 2006<sup>a, b, c, d, e</sup></i>									
2006	90.1	91.8	90.8	89.1	91.0	93.8	90.7	90.6	90.7
<i>Older people who received a voluntary health assessment<sup>f, g</sup></i>									
2003-04	17.9	17.6	18.1	13.0	19.4	18.0	12.3	3.7	17.5
2004-05	19.8	18.1	19.6	13.6	20.3	19.2	11.1	5.4	18.7
2005-06	21.3	19.4	22.6	15.1	20.7	21.4	13.6	6.7	20.3

<sup>a</sup> Coverage measured at 30 June for children turning 12 months of age by 31 March, by the State or Territory in which the child was located. <sup>b</sup> The Australian Childhood Immunisation Register (ACIR) includes all children under 7 years of age who are registered with Medicare. By the age of 12 months, over 98 per cent of Australian children have been registered with Medicare.

<sup>c</sup> There may be some under-reporting by providers. Therefore, vaccine coverage estimates calculated using ACIR data are considered minimum estimates. <sup>d</sup> NT immunisation records differ from ACIR records. This may stem from delays in notifications reaching and being processed by the Health Insurance Commission, or because the cohort method of reporting immunisation coverage does not allow for assessment of 'catch up' immunisation occurring after the assessment age of 12 months. Average delay times were greatest in the NT. <sup>e</sup> Children assessed as fully immunised at 12 months are immunised against diphtheria, tetanus, whooping cough, polio, hepatitis b and Haemophilus influenzae type b. <sup>f</sup> Older people are defined as non-Indigenous people aged 75 years and over and Indigenous people aged 55 years and over, excluding people living in residential aged care facilities. <sup>g</sup> Excludes services that qualify under the DVA National Treatment Account and services provided in public hospitals.

Source: Department of Health and Ageing (unpublished); figure 10.20 and table 10A.28; Department of Health and Ageing (unpublished); figure 10.18 and table 10A.26.

[END]

**Background information:** Lawrence McDonald, Head of Secretariat 03 9653 2178/0421 584 905

**Other information:** Clair Angel, Media and Publications 02 6240 3239/0417 665 443

**Please do not approach other parties for comment before Wednesday 31 January 2007.**

Media copies of this report are available from Clair Angel on 02 6240 3239.

Hard copies of this publication are available from Pirion/J.S. McMillan (ph: 02 9795 1200 or email [custserv@jsmcmillan.com.au](mailto:custserv@jsmcmillan.com.au)). The report will be available via the Internet at <http://www.pc.gov.au/> on the morning of release.