

Under embargo until 1.00am on Friday, 30 January 2009

For personal use only. Third parties should not be approached until the embargo is lifted.

SUPPORTED ACCOMMODATION AND ASSISTANCE SERVICES
(CHAPTER 15)

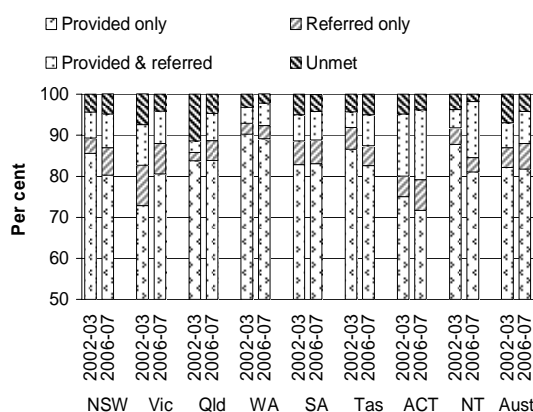
- This chapter reports on the performance of governments in providing child protection, out of home care, juvenile justice and supported accommodation and assistance services. This fact sheet focuses on the performance of jurisdictions providing services through the Supported Accommodation Assistance Program (SAAP).
- Total recurrent funding of SAAP services was approximately \$372.9 million in 2007-08 of which the Australian Government contributed 49.8 per cent and the State and Territory governments contributed 50.1 per cent (p. 15.69).

Objectives of supported assistance and accommodation services

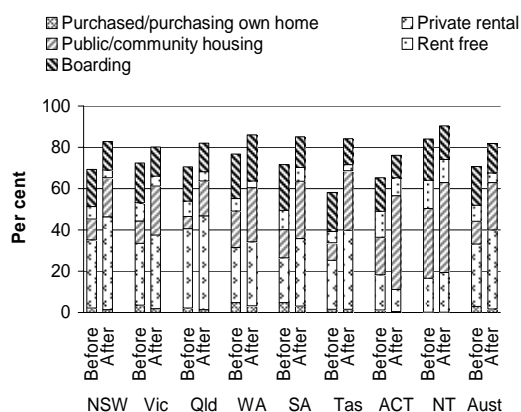
- The overall aim of supported accommodation and assistance services is to provide transitional supported accommodation and a range of related services, to help people who are homeless or at imminent risk of homelessness to achieve the maximum possible degree of self-reliance and independence.

Selection of results

SAAP clients, by met and unmet support needs^a
(p. 15.81)

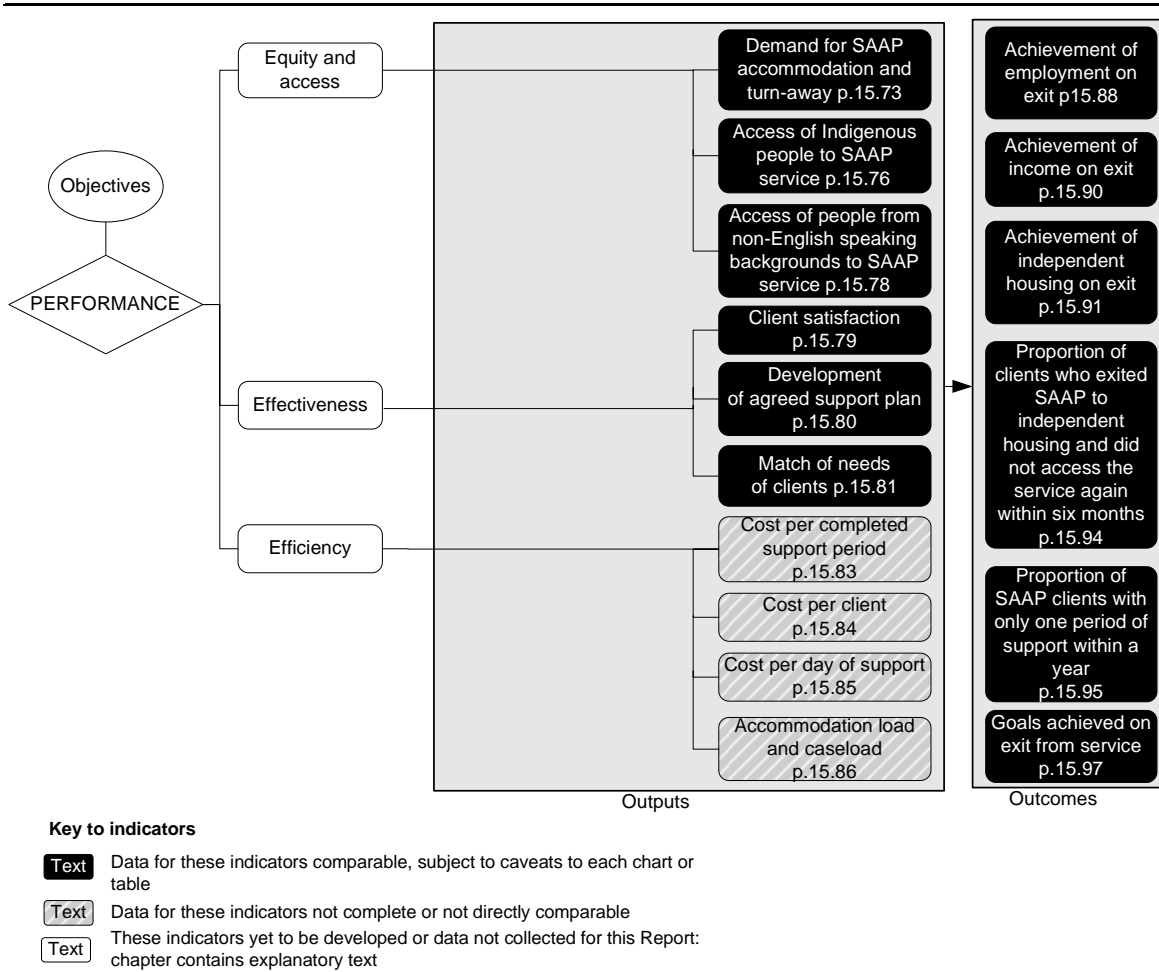


Independent housing before and after SAAP support, for clients who requested assistance with obtaining or maintaining housing, all SAAP clients, 2006-07^a
(p. 15.93)



^a Data and caveats for these figures are available electronically on the CD-ROM enclosed with the Report and from the website for the Review of Government Service Provision (www.pc.gov.au/gsp/reports/rogs/2009). Data may be subject to revision. The most recent data will be available on the Review website.

Performance indicators for SAAP (figure 15.21, p. 15.72)



[END]

Background information: Lawrence McDonald, Head of Secretariat 03 9653 2178/0421 584 905

Other information: Clair Angel, Media and Publications 02 6240 3239/0417 665 443

Please do not approach other parties for comment before Friday 30 January 2009.

Media copies of this report are available from Clair Angel on 02 6240 3239.

Hard copies of this publication are available from McMillanprint (ph: 02 9795 1200 or email custserv@mcmillanprint.com.au). The report will be available via the Internet at www.pc.gov.au on the morning of Friday 30 January 2009.

Tables with an 'A' suffix (eg table 15A.5) are in the attachments on the CD-ROM or on the Review website.