

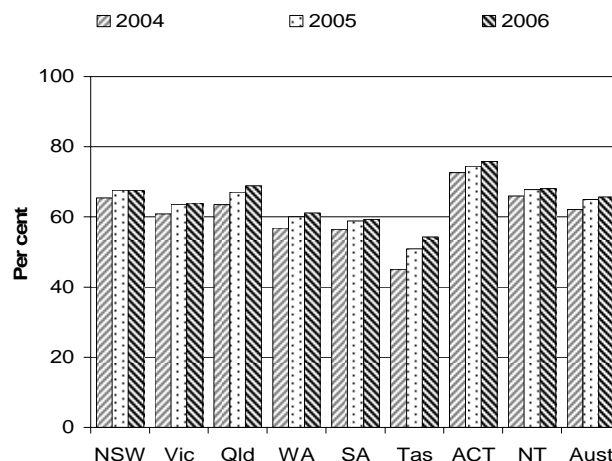
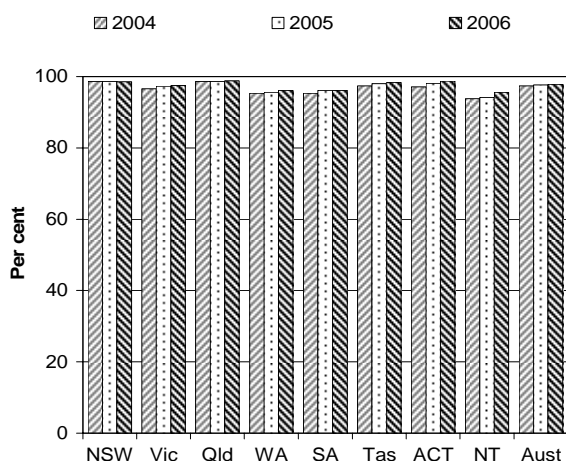
HOUSING (CHAPTER 16)

- This chapter focuses on the performance of governments in providing public and community housing, and State owned and managed Indigenous housing (SOMIH), under the Commonwealth State Housing Agreement (CSHA), and on the delivery of Commonwealth Rent Assistance (CRA).
- There were approximately 341 000 public housing dwellings (table 16A.1), 13 000 SOMIH dwellings (p. 16.12) and 30 000 community housing dwellings in Australia at 30 June 2006 (p. 16.11). Funding for public, community and SOMIH programs is provided by Australian, State and Territory Governments. The majority of the \$1.3 billion provided under the CSHA in 2005-06 represented funding for these programs (p. 16.5).

Selection of results

Public housing —occupancy rates^a (p. 16.35)

Proportion of income units receiving CRA paying enough rent to receive maximum assistance^a (p. 16.64)



See over for data and footnotes.

See over for data and footnotes.

- The Report also contains information on customer satisfaction with public, SOMIH and community housing (pp. 16.41-42, 16.57-58).
- Financial indicators are provided for public, SOMIH and community housing (direct cost per unit) (pp. 16.31-35, 16.51).
- Other indicators for public, SOMIH and community housing are occupancy rates (pp. 16.35-36, 16.51-52), rent collection rate (pp. 16.37-38, 16.53), the proportion of allocations to people with low incomes (pp. 16.27-28, 16.47-48), special needs (pp. 16.28-29, 16.48-49), priority access to those in greatest need (pp. 16.30-31, 16.49-50), overcrowding (pp. 16.44-46, 16.55-57) and affordability (pp. 16.43-44,

[MORE]

16.54-55). Turnaround time indicator data were reported for public housing and SOMIH (pp. 16.36-37).

Progress since 2006 Report

Reporting for public housing and SOMIH has been combined against the nationally agreed performance indicator framework. National data are reported for the first time on 'running costs per 1000 customers' and 'ratio of running costs to total outlays' for CRA. Data are reported on customer satisfaction at the jurisdictional level for SOMIH.

Data for charts on previous page

Public housing — occupancy rates as at 30 June (per cent)^{a, b}

	NSW	Vic	Qld	WA	SA	Tas	ACT	NT	Aust
2004	98.7	96.6	98.7	95.3	95.4	97.4	97.2	93.8	97.4
2005	98.7	97.3	98.6	95.6	96.1	98.0	98.1	94.1	97.7
2006	98.6	97.5	98.9	96.2	96.2	98.4	98.7	95.6	97.8

^a The Public Housing Administrative Data Repository was used to collect all administrative data (excluding financial data, employment data and 2005 National Social Housing Survey of Public Housing Tenants data) for all jurisdictions. ^b Jurisdictions exclude various types of households as shown in the table 16A.81. For this reason, comparisons between jurisdictions' data should be made with caution.

Source: AIHW (2004c, 2005c, 2006c); table 16A.6.

Income units receiving maximum rate of CRA, by jurisdiction (per cent)^{a, b, c}

	NSW	Vic	Qld	WA	SA	Tas	ACT	NT	Aust
2004	65	61	64	57	56	45	73	66	62
2005	68	64	67	60	59	51	74	68	65
2006	68	64	69	61	59	54	76	68	66

^a At 3 March 2006. ^b Income units are analogous to family units except that nondependent children and other adults are treated as separate income units. A child is regarded as dependent on an adult only if the adult receives the Family Tax Benefit for the care of the child. See section 16.6 for more details. ^c Includes only income units entitled to a daily rate of CRA under the Social Security Act 1991 or with Family Tax Benefit at the relevant date.

Source: FaCSIA (unpublished); table 16A.57.

[END]

Background information: Lawrence McDonald, Head of Secretariat 03 9653 2178/0421 584 905

Other information: Clair Angel, Media and Publications 02 6240 3239/0417 665 443

Please do not approach other parties for comment before Wednesday 31 January 2007.

Media copies of this report are available from Clair Angel on 02 6240 3239.

Hard copies of this publication are available from Pirion/J.S. McMillan (ph: 02 9795 1200 or email custserv@jsmcmillan.com.au). The report will be available via the Internet at <http://www.pc.gov.au/> on the morning of release.