

Under embargo until 1.00am on Friday, 30 January 2004

Please do not approach other parties for comment before
Thursday, 29 January 2004.

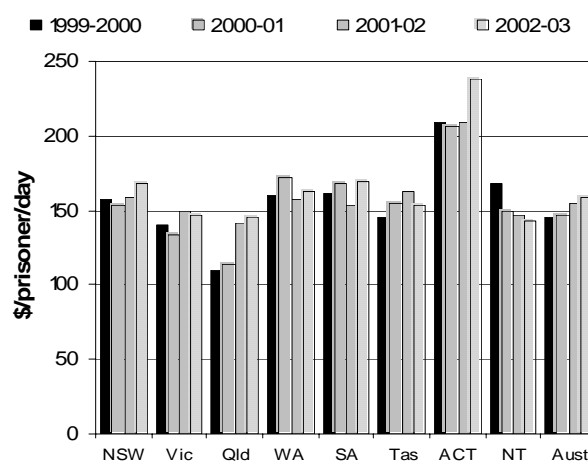
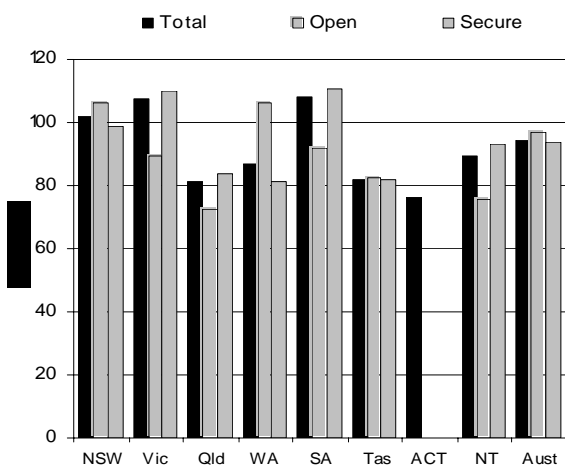
CORRECTIVE SERVICES (CHAPTER 7)

- The focus of this chapter is on prison custody and a range of community corrections orders and programs for adult offenders. Nationally, expenditure on corrective services (net of revenue from own sources) was \$1.7 billion in 2002-03. Expenditure on prisons was \$1.5 billion, community corrections \$188.0 million and prisoner transport and escort services \$59.0 million (p. 7.3).
- In 2002-03, on average, 22 232 people per day were held in Australian prisons during the year and an additional 946 people on average were serving periodic detention orders in NSW and the ACT. Nationally, 18.8 per cent of the total prisoner population (excluding periodic detainees) were held in privately operated facilities (p. 7.4).
- Nationally, the total imprisonment rate (prisoners per 100 000 adults) was 147.2, with the rate ranging from 518.6 in the NT to 80.2 in the ACT (p. 7.4). The national Indigenous imprisonment rate (per 100 000 Indigenous adults) was 1850.5 compared with a rate of 115.4 for non-Indigenous prisoners (p. 7.5).
- On average, 51 929 offenders per day were serving community corrections orders in Australia in 2002-03 (p. 7.7). Nationally, the community corrections rate (offenders per 100 000 adults) was 343.9, and the rate ranged from 678.2 in the NT to 194.4 in Victoria (p. 7.7).

Selection of results

Prison capacity utilisation rates, 2002-03 (p. 7.27)

Real recurrent cost per prisoner per day (2002-03 dollars)
(p 7.23)



See over for data and footnotes.

See over for data and footnotes.

- Other indicators include unnatural deaths in custody (p. 7.14), escape rates (p. 7.16), out-of-cell hours (p. 7.16), completion of community orders (p. 7.17), prisoner employment (p. 7.18), community work by offenders (p. 7.19), prisoner education (p. 7.20), offender to staff ratios (p. 7.25), and recurrent and capital cost per offender (p. 7.24).

[MORE]

Data for charts on previous page

Prison capacity utilisation rates, 2002-03 (per cent)

	NSW	Vic	Qld	WA	SA	Tas	ACT ^a	NT	Aust
Total	102.0	107.5	81.5	87.2	108.2	82.0	76.4	89.4	94.7
Open	105.9	89.4	72.4	106.5	92.1	82.2	..	75.6	97.0
Secure	98.9	110.3	83.6	81.0	110.8	81.9	..	93.3	93.8

^a ACT data are based on prisoners held in the ACT Remand Centre. .. Not applicable.

Source: table 7A.22.

Real recurrent cost per prisoner per day (2002-03 dollars)^{a, b}

	NSW ^c	Vic	Qld	WA	SA	Tas	ACT ^c	NT	Aust ^c
1999-2000	156.8	140.0	110.1	160.6	161.9	146.1	208.8	167.5	145.7
2000-01	154.1	134.3	114.0	172.0	168.0	155.4	206.1	149.3	146.6
2001-02	158.8	149.5	141.4	158.0	154.0	162.5	208.7	146.4	154.3
2002-03	167.4	147.2	146.0	162.4	169.3	153.5	237.7	142.3	159.4

^a Data for previous years were adjusted to 2002-03 dollars using the GDP price deflator. ^b Net recurrent expenditure excludes payroll tax and is net of recurrent receipts (own source revenues) ^c ACT figures include all ACT prisoners whether in the ACT or NSW prisons. NSW figures include ACT prisoners held in NSW prisons. Australian figures are calculated so that ACT prisoners held in NSW prisons are not double counted.

Source: table 7A.8.

[END]

Background information: Robyn Sheen, Head of Secretariat 03 9653 2184/0419 637 068

Other information: Clair Angel, Media and Publications 02 6240 3239/0417 665 443

Please do not approach other parties for comment before Thursday, 29 January 2004.

Media copies of this report are available from Clair Angel on 03 9653 2244.

Hard copies of this publication are available from Pirion/J.S. McMillan (ph: 02 9795 1200 or email custserv@jismcmillan.com.au). The report can also be accessed via the Internet at <http://www.pc.gov.au/> on the morning of release.