

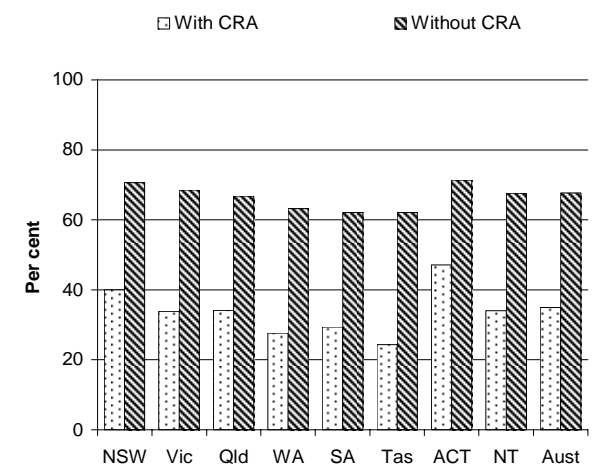
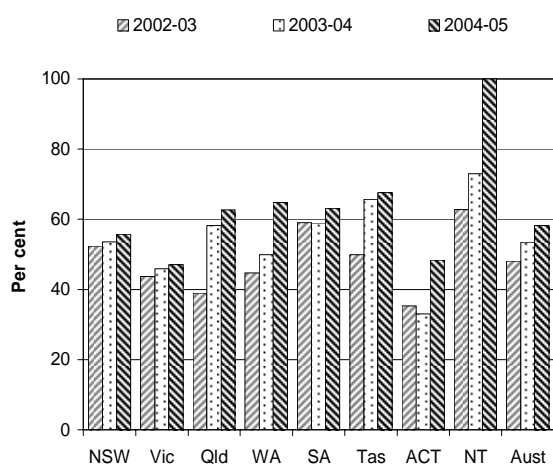
HOUSING (CHAPTER 16)

- This chapter focuses on the performance of governments in providing public and community housing, and State owned and managed Indigenous housing (SOMIH), under the Commonwealth State Housing Agreement (CSHA), and on the delivery of Commonwealth Rent Assistance (CRA).
- There were approximately 343 000 public housing dwellings (p. 16.12), 29 000 community housing dwellings and 13 000 SOMIH dwellings in Australia at 30 June 2005 (p. 16.14). Funding for public, community and SOMIH programs is provided by Australian, State and Territory Governments. The majority of the \$1.3 billion provided under the CSHA in 2004-05 represented funding for these programs (p. 16.7).

Selection of results

Public housing — new tenancies allocated to households with special needs<sup>a, b, c</sup> (p. 16.34)

Income units paying more than 30 per cent of income on rent, with and without CRA, 2005<sup>a, b, c</sup> (p. 16.90)



See over for data and footnotes.

See over for data and footnotes.

- The Report also contains information on tenant satisfaction with public, community and SOMIH housing (pp. 16.46-16.47, 16.64-16.65, 16.78).
- Financial indicators are provided for public and community housing (direct cost per unit) (pp. 16.35-16.39, 16.54-16.55). Gross cost per dwelling excluding capital costs is reported for SOMIH (pp. 16.72-16.74).
- Indicators for public, community and SOMIH are occupancy rates (pp. 16.39-16.40, 16.55-16.56, 16.74-16.75), turnaround times (pp. 16.40-16.41, 16.56-16.58, 16.75-16.76), rent collected as a proportion of rent charged (pp. 16.41-16.42, 16.58-16.59, 16.76-16.77), the proportion of allocations to people with low incomes (pp. 16.34-16.35, 16.52-16.54, 16.70-16.71), households that pay less than market rent or special needs households paying market rent, as a proportion of all public or SOMIH households

(pp. 16.32-16.33, 16.68-16.69), priority access to those in greatest need (pp. 16.34-16.35, 16.52-16.54, 16.70-16.71), overcrowding (pp. 16.44-16.46, 16.63-16.64, 16.79-16.81) and affordability (pp. 16.43-16.44, 16.60-16.62, 16.78-16.79).

## Progress since the 2005 Report

The performance indicator framework for CRA has been revised and simplified. Data are reported for the first time on customer satisfaction with SOMIH.

## Data for charts on previous page

Public housing — proportion of new tenancies allocated to households with special needs<sup>a, b</sup>

	NSW	Vic	Qld	WA	SA	Tas	ACT	NT <sup>c</sup>	Aust
2002-03	52.4	43.7	38.9	44.7	59.0	49.9	35.3	62.8	48.1
2003-04	53.6	45.9	58.2	49.9	58.9	65.7	33.0	73.0	53.5
2004-05	55.7	47.1	62.7	64.8	63.2	67.6	48.4	100.0	58.2

<sup>a</sup> Data for WA and ACT for 2004-05 are based on different methodology from that used for their previous years' data and a direct comparison of 2004-05 data with previous years for WA and ACT cannot be made. For details of these changes see WA and ACT footnotes in table 16A.4. <sup>b</sup> Data for the Queensland, WA, ACT and the NT for 2004-05 are not comparable with the other data presented and should not be directly compared with other jurisdictions' data. For details of non-comparability see Queensland, WA, ACT and the NT footnotes in table 16A.4. <sup>c</sup> Special needs details are only recorded where they are known to exist — no record is maintained if a household has no special needs status. All new households who identify as special needs are therefore recorded. This may represent an overcount.

Source: AIHW (various years), CSHA National Data Reports: Public Rental Housing; table 16A.4.

Proportion of income units receiving CRA spending over 30 per cent of income on rent, with and without CRA, 31 March, 2005<sup>a, b, c</sup>

	NSW	Vic	Qld	WA	SA	Tas	ACT	NT	Aust
With CRA	40.0	33.8	34.1	27.6	29.4	24.4	47.2	34.0	35.0
Without CRA	70.7	68.5	66.8	63.2	62.1	62.2	71.3	67.6	67.7

<sup>a</sup> At 4 March. <sup>b</sup> Includes only income units paid CRA under the Social Security Act 1991 or with Family Tax Benefit in the preceding fortnight who were still entitled to assistance at the end of that fortnight. Excludes a small number of income units paid where income details are incomplete. <sup>c</sup> See Section 16.6 for explanation of how proportion of income spent on rent is calculated.

Source: FaCS (unpublished); table 16A.63.

[END]

**Background information:** Lawrence McDonald, Head of Secretariat 03 9653 2178/0421 584 905

**Other information:** Clair Angel, Media and Publications 02 6240 3239/0417 665 443

**Please do not approach other parties for comment before Monday 30 January 2006.**

Media copies of this report are available from Clair Angel on 02 6240 3239.

Hard copies of this publication are available from Pirion/J.S. McMillan (ph: 02 9795 1200 or email [custserv@jsmcmillan.com.au](mailto:custserv@jsmcmillan.com.au)). The report will be available via the Internet at <http://www.pc.gov.au/> on the morning of Tuesday 31 January 2006.

Tables with an 'A' prefix (eg table 16.A5) are in the electronic attachments on the CD-ROM or on the Review website.