

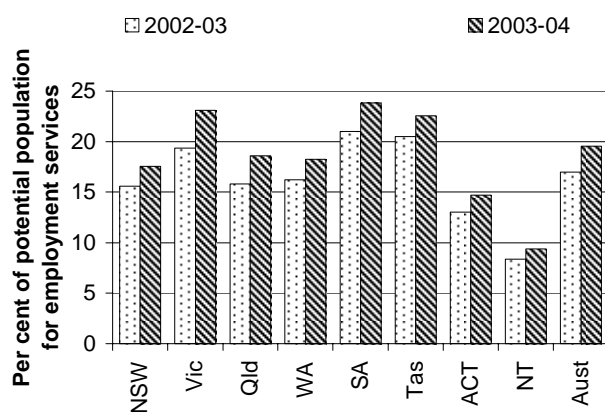
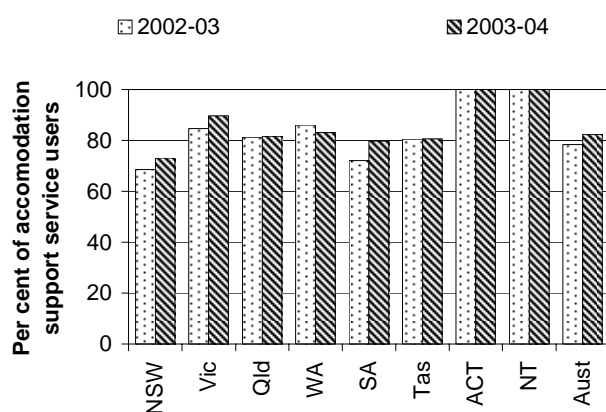
SERVICES FOR PEOPLE WITH A DISABILITY (CHAPTER 13)

- Reporting on services for people with a disability focuses on the performance of the Australian, State and Territory governments under the Commonwealth State/Territory Disability Agreement (CSTDA). This agreement forms the basis for the provision and funding of specialist services for people with a disability who require ongoing or long term episodic support.
- The estimated number of people aged under 65 years in Australia with a profound or severe core activity limitation was 687 710 in 2003-04 (table 13A.10).
- Total government expenditure on CSTDA services was \$3.6 billion in 2004-05, this was a real increase of 6.2 per cent on the expenditure in 2003-04 (\$3.4 billion) (p. 13.8). Of all CSTDA funding in 2004-05, 72.1 per cent came from State and Territory governments and 27.9 per cent came from the Australian Government (p. 13.8).
- In 2003-04, an estimated 179 162 service users received services provided under the CSTDA, of which 15.7 per cent received accommodation support services (table 13A.1). In recent years, governments have generally sought to increase the provision of accommodation support services for people with a disability outside institutional settings, aiming to assist people with a disability to live as both valued and participating members of the community. Nationally, 82.4 per cent of accommodation support service users received community accommodation and care services in 2003-04 (p. 13.33).

Selection of results

Users of community accommodation and care services as a proportion of all accommodation support service users (p. 13.34)

Users of employment services as a proportion of the estimated potential population for employment services (p. 13.18)



See over for data and footnotes.

See over for data and footnotes.

- Employment services for people with a disability were the main responsibility of the Australian Government under the CSTDA. Nationally, 19.6 per cent of the estimated potential population were using employment services in 2003-04 (p. 13.17).

Progress since 2005 Report

Significant improvements in the reporting of services for people with a disability are:

[MORE]

- reporting community access services data for the 'service use by severity of disability' indicator
- reporting data by special needs groups against the 'labour force participation and employment' outcome indicator
- the inclusion of CSTDA National Minimum Data Set (NMDS) service user data collected over a whole year (2003-04 data) — this is an improvement over the six months of data (from 1 January 2003 to 30 June 2003) for 2002-03 reported in last year's report and the data for previous reports sourced from snapshot day collections.

Data for charts on previous page

Users of community accommodation and care services as a proportion of all accommodation support service users^{a, b, c, d}

	NSW	Vic ^e	Qld	WA ^f	SA	Tas	ACT	NT	Aust
2002-03	68.5	84.7	81.3	86.0	72.0	80.6	100.0	100.0	78.4
2003-04	73.1	89.8	81.6	83.1	79.7	80.7	100.0	100.0	82.4

^a Service user data are estimates after a statistical linkage key is used to account for individuals who received services from more than one service type outlet during each period. Individuals might have accessed services from more than one State or Territory. Individuals might have accessed services from both accommodation service type categories (institutional/large residential or community accommodation and care services). ^b Data for service users of CSTDA funded accommodation support services exclude specialist psychiatric disability services identified by the jurisdiction. ^c Community accommodation and care services include group homes, attendant care/personal care, in-home accommodation support, alternative family placement and other accommodation support. ^d Data used for this indicator have quality issues related to the development of the new CSTDA NMDS. This indicator thus needs to be interpreted with care. Differences in service type outlet response rates between jurisdictions, for example, should be considered when comparing jurisdictional data. ^e Victorian 2003-04 data are reported to be significantly understated because errors in the 'date of last service received' and lower than expected response rates have led to undercounting of service users. ^f The WA 2003-04 service data reflect an improved and more accurate method of data collection for one agency and are not comparable with 2002-03 data. The counting variance exceeds the reported variance between the two years, indicating a likely real increase.

Source: AIHW (2004a, 2004b, 2005a, 2005b); table 13A.23.

Users of employment services as a proportion of the estimated potential population for employment services^{a, b, c}

	NSW	Vic	Qld	WA	SA	Tas	ACT	NT	Aust
2002-03 ^d	15.6	19.4	15.8	16.2	21.0	20.5	13.0	8.3	17.0
2003-04	17.6	23.1	18.6	18.2	23.8	22.6	14.7	9.4	19.6

^a Data are estimates. Population estimates of 9000 or less have a relative standard error of 25 per cent or more. Tasmania, the ACT and the NT have population estimates of less than 9000. ^b Service user data are estimates after a statistical linkage key is used to account for individuals who received services from more than one service type outlet during the relevant period. Individuals might have accessed services from more than one State or Territory during the relevant period. ^c The potential population estimates (national age- and sex-specific rates applied to each jurisdiction) for employment services are the number of people aged 15-64 years with severe or profound core activity limitations, multiplied by both the Indigenous factor and the labour force participation rate for that jurisdiction. See section 13.6 for detailed information on the estimated potential population and the Indigenous factor. ^d Data for 2002-03 are for the period 1 January 2003 to 30 June 2003 only.

Source: ABS (2002a, 2002b, 2003a, 2003b, 2004b); AIHW (2004a, 2004b, 2005a, 2005b); AIHW analysis of the 2003 ABS Survey of Disability, Ageing and Carers data; table 13A.11.

[END]

Background information: Lawrence McDonald, Head of Secretariat 03 9653 2178/0421 584 905

Other information: Clair Angel, Media and Publications 02 6240 3239/0417 665 443

Please do not approach other parties for comment before Monday 30 January 2006.

Media copies of this report are available from Clair Angel on 02 6240 3239.

Hard copies of this publication are available from Pirion/J.S. McMillan (ph: 02 9795 1200 or email custserv@jsmcmillan.com.au). The report will be available via the Internet at <http://www.pc.gov.au/> on the morning of Tuesday 31 January 2006.

Tables with an 'A' prefix (eg table 13.A5) are in the electronic attachments on the CD-ROM or on the Review website.