

Under embargo until 1.00am on Friday, 29 January 2010

For personal use only. Third parties should not be approached until the embargo is lifted.

PUBLIC HOUSING AND STATE OWNED AND MANAGED INDIGENOUS HOUSING (CHAPTER 16)

This chapter focuses on the performance of governments in providing:

- public, State owned and managed Indigenous housing (SOMIH) and community housing under the Commonwealth State Housing Agreement (CSHA) until 31 December 2008 and the National Affordable Housing Agreement (NAHA) from 1 January 2009.
- Indigenous community housing (ICH)
- Commonwealth Rent Assistance (CRA).

This Factsheet focuses on the performance of jurisdictions providing public housing and SOMIH.

There were approximately 336 000 public housing dwellings (**table 16A.1**) and 12 000 SOMIH dwellings (**p. 16.10**) in Australia at 30 June 2009.

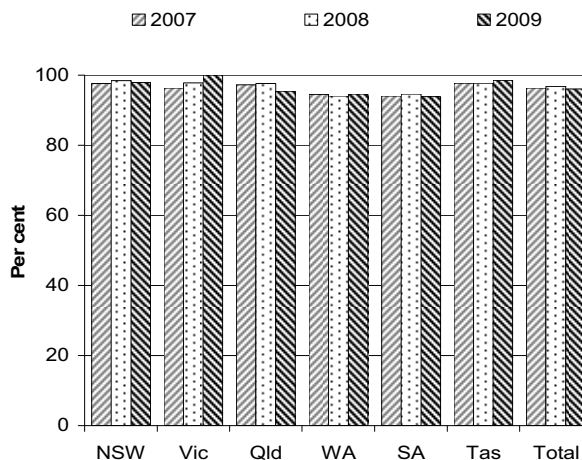
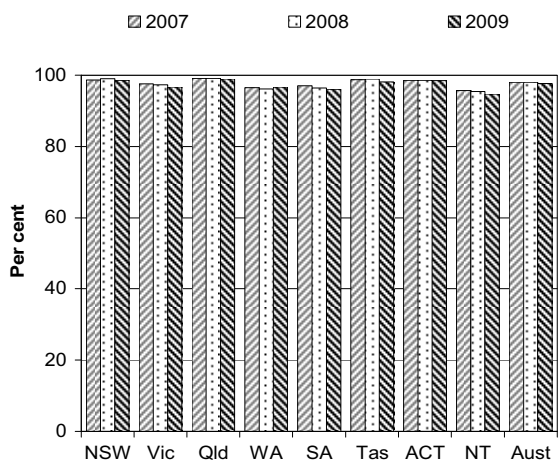
Objectives of public housing and SOMIH

The objectives of public housing and SOMIH are to provide appropriate, affordable and secure housing assistance for those who most need it, for the duration of their need and that all Australians have access to affordable, safe and sustainable housing that contributes to social and economic participation (**p. 16.2**).

Selection of results

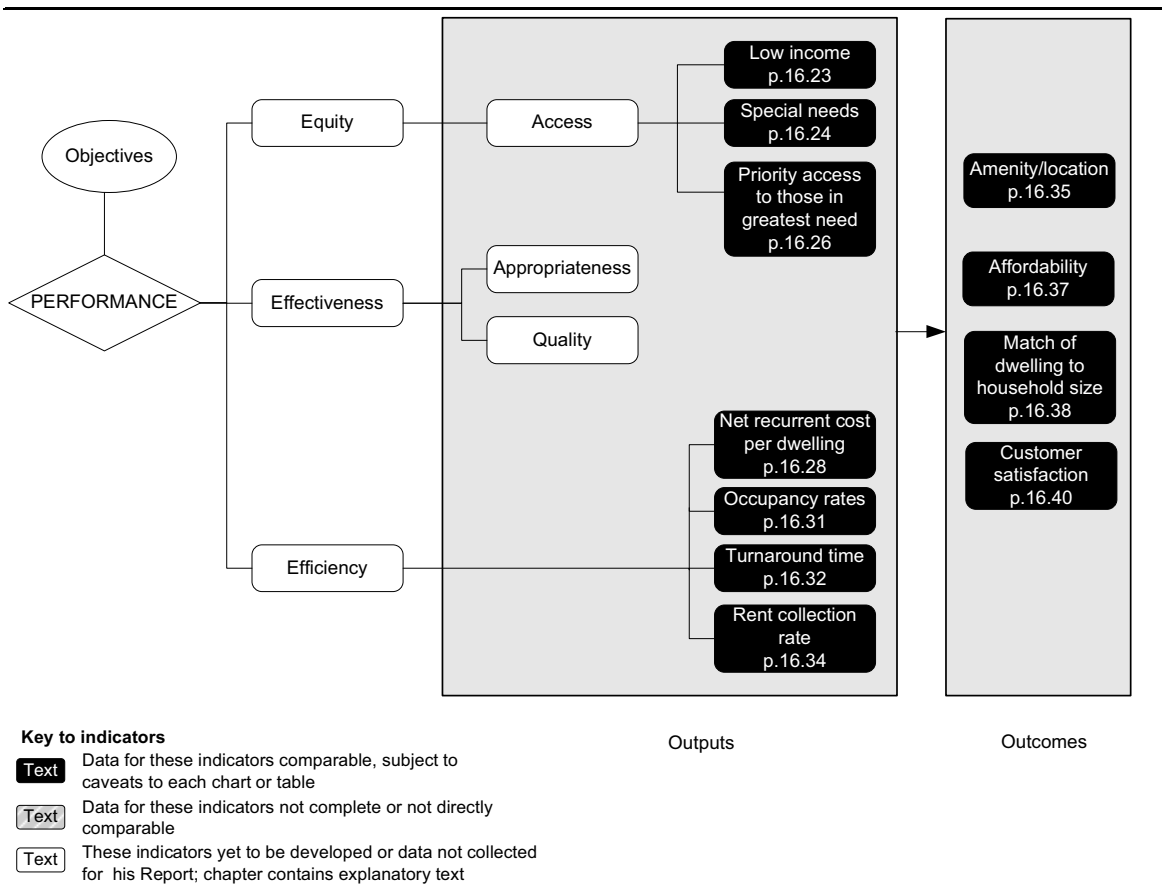
Public housing — occupancy rates (per cent)^a (p. 16.32)

SOMIH — occupancy rates (per cent)^a (p. 16.32)



^a Data and caveats for these figures are available electronically on the CD-ROM enclosed with the Report and from the website for the Review of Government Service Provision (www.pc.gov.au/gsp/reports/rogs/2010). Data may be subject to revision. The most recent data will be available on the Review website.

Performance indicators for public housing and SOMIH (figure 16.2, p. 16.22)



Developments in reporting since the 2009 Report

The performance indicator data for public housing and SOMIH were reported under the NAHA from 1 January 2009.

[END]

Background information: Lawrence McDonald, Head of Secretariat 03 9653 2178/0421 584 905

Other information: Clair Angel, Media and Publications 02 6240 3239/0417 665 443

Please do not approach other parties for comment before Friday 29 January 2010.

Media copies of this report are available from Clair Angel on 02 6240 3239.

Hard copies of this publication are available from Canprint Communications (ph: 1300 889 873 or email sales@infoservices.com.au). The report will be available via the Internet at www.pc.gov.au on the morning of Friday 29 January 2010.

Tables with an 'A' suffix (eg table 16A.5) are in the attachments on the CD-ROM or on the Review website.