

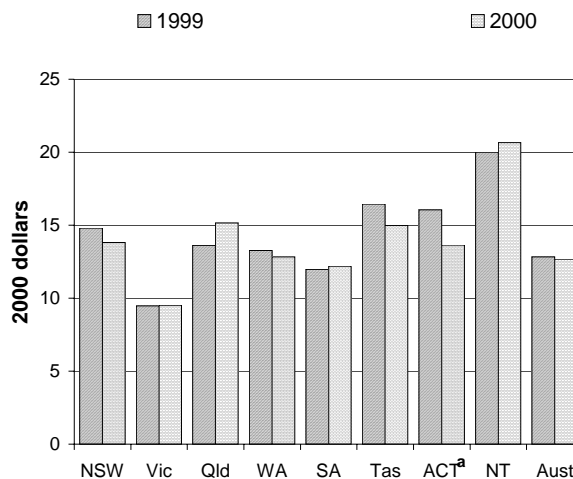
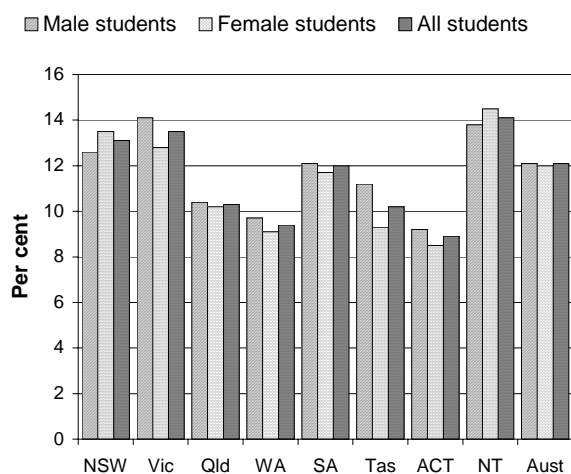
VOCATIONAL EDUCATION AND TRAINING (CHAPTER 4)

- The focus of the vocational education and training (VET) chapter is the provision of VET in publicly owned technical and further education (TAFE) institutes and universities with TAFE divisions, other government and community institutions, and publicly funded activity by private registered training organisations.
- Over 346.1 million hours of VET programs were publicly funded or delivered on a fee-for-service basis by public providers in 2000. These programs were delivered by 86 public training institutions, 1139 community based providers and 3388 publicly funded private providers (p. 114).
- Recurrent government expenditure on VET was \$3.3 billion in 2000 (p. 113).
- One equity target group — students from rural areas — reported completion rates higher than the national average in 2000 (77.5 per cent for students from rural areas compared with 75.4 per cent for all students) (p. 125).
- Seventy six per cent of the surveyed TAFE institute graduates who completed a VET program during 1999 indicated that they were employed in 2000 (p. 128).

Selection of results

VET participation rates for people aged 15–64 years, 2000
(p. 122)

Real government recurrent expenditure per adjusted
annual hour of curriculum^b (p. 132)



See over for data and footnotes.

See over for data and footnotes.

[MORE]

Data for charts on previous page

	NSW	Vic	Qld	WA	SA	Tas	ACT	NT	Aust
VET participation rates for people aged 15–64 years, 2000									
Male Student	12.6	14.1	10.4	9.7	12.1	11.2	9.2	13.8	12.1
Female Students	13.5	12.8	10.2	9.1	11.7	9.3	8.5	14.5	12.0
All students	13.1	13.5	10.3	9.4	12.0	10.2	8.9	14.1	12.1
Real government recurrent expenditure per adjusted annual hour of curriculum, 2000 Dollars ^a									
1999	14.8	9.5	13.6	13.3	12.0	16.4	16.0	20.0	12.8
2000	13.8	9.5	15.1	12.8	12.2	15.0	13.6	20.7	12.7

^a The ACT is the only jurisdiction not to levy payroll tax on its VET employees. A payroll tax estimate, based on the ACT payroll tax rate has been included in the expenditure data presented. ^b The gross non-farm product deflator has been used to adjust for inflation.

Sources: tables 4A.8 and 4A.2.

[END]

Background information: Dr Robyn Sheen, Assistant Commissioner 03 9653 2184/0419 637 068

Other information: Ms Clair Angel, Media and Publications 02 6240 3239/0417 665 443

Please do not approach other parties for comment before Wednesday 30 January 2002.

Media copies of this report are available from Clair Angel on 02 6240 3239.

Other requests for this report should be directed to Government Info Shops. The report can also be accessed via the Internet at <http://www.pc.gov.au/> on the morning of release.