

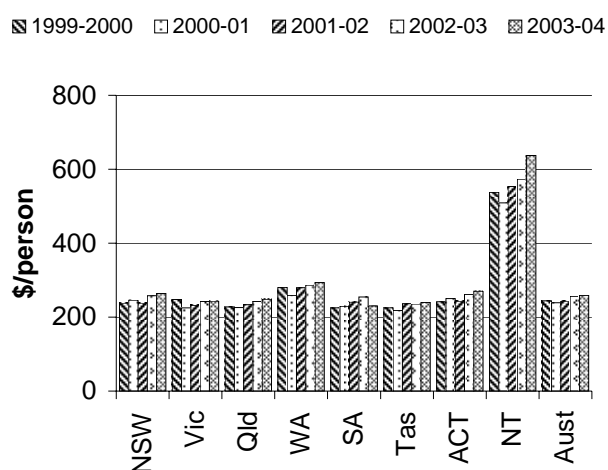
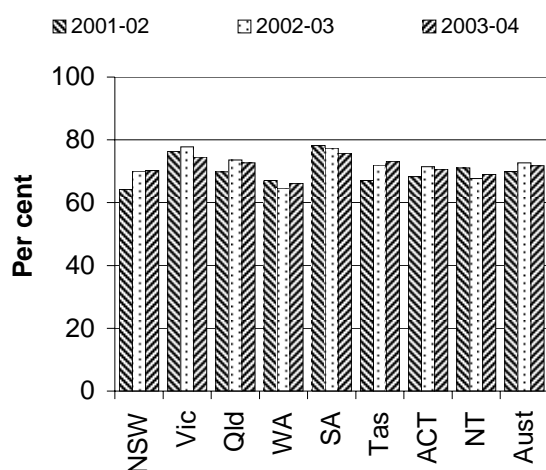
POLICE SERVICES (CHAPTER 5)

- This chapter reports on the operations of the police agencies of each State and Territory Government, including the ACT community policing function performed by the Australian Federal Police.
- Recurrent expenditure on police services across Australia was approximately \$5.2 billion or \$259 per person in 2003-04 (p. 5.3). Police agencies employed 57 626 people in 2003-04 (p. 5.11).

Selection of results

People who were 'satisfied' or 'very satisfied' with police services (p. 5.16)

Real recurrent expenditure, less revenue from own sources and payroll tax, on police services (2003-04 dollars) (p. 5.3)



See over for data and footnotes.

See over for data and footnotes.

- Nationally, 40.4 per cent of people surveyed felt 'safe' or 'very safe' when walking or jogging locally after dark in 2003-04 (compared to 41.5 per cent in 2002-03). This response ranged from 45.0 per cent in Tasmania to 35.7 per cent in the NT (p. 5.32-34).
- Information is available on the estimated level of crime derived from survey information, trends in crime recorded by police, perceptions of crime and outcome of investigations. For example, data are reported on the estimated number of household victims of motor vehicle theft (p. 5.44-45), the trend in the number of motor vehicle thefts recorded by police (p. 5.45), public perceptions of problems with motor vehicle theft (p. 5.36-37) and the proportion of motor vehicle theft investigations that were finalised within 30 days of the offence becoming known to police (p. 5.56-57).
- Nationally in 2003-04, 10.6 per cent of people surveyed who had driven in the previous 12 months indicated that they had 'sometimes' or more often ('half the time', 'most of the time', or 'always') driven when possibly over the 0.05 blood alcohol limit (compared to 9.6 per cent

[MORE]

in 2002-03). This proportion ranged from 16.7 per cent in the NT to 9.3 per cent in Victoria (p. 5.66).

- There were 12 road deaths per 100 000 registered vehicles in Australia in 2003-04 (compared to 13 per 100 000 in 2002-03). This ranged from 43 deaths per 100 000 registered vehicles in the NT to four in the ACT (p. 5.67).

Progress since the 2004 Report

A new performance indicator framework was implemented in the chapter. Work continues on improving data quality and comparability across jurisdictions.

Data for charts on previous page

People who were 'satisfied' or 'very satisfied' with police services^{a, b}

	Unit	NSW	Vic	Qld	WA	SA	Tas	ACT	NT	Aust
2001-02	%	64.2	76.3	69.8	67.1	78.2	67.1	68.3	71.0	69.9
2002-03	%	70.0	77.8	73.6	64.6	77.4	72.0	71.5	67.7	72.7
2003-04	%	70.2	74.5	72.6	66.2	75.7	73.2	70.6	69.0	71.8

^a Data for 2001-02 are based on responses from people aged 18 years and over, whereas data for 2002-03 are based on responses from people aged 15 years or over. ^b The 2001-02 data contains some minor weighting errors.

Source: table 5A.23

Real recurrent expenditure, less revenue from own sources and payroll tax, for police services, per person (2003-04 dollars)^{a, b, c, d, e}

	NSW	Vic	Qld	WA	SA	Tas	ACT (e)	NT	Aust
1999-2000	238	248	227	280	225	225	242	537	244
2000-01	246	225	226	259	229	219	250	510	239
2001-02	238	232	234	280	241	236	244	554	243
2002-03	258	242	242	286	254	236	261	573	256
2003-04	264	243	248	294	230	240	270	637	259

^a Revenue from own sources includes user charges and other types of revenue (for example, from sale of stores and plant). It excludes fine revenue, money received as a result of warrant execution, and revenue from the issuing of firearm licences.

^b Excludes the user cost of capital. ^c Population based on ABS estimates for December 2003. ^d Real expenditure based on ABS GDP price deflator 2003-04=100 ^e As a result of a comprehensive review of enabling costs applicable to ACT Policing in 2000-01, the formula previously applied to the calculation of staffing and expenditure data has been significantly revised. This methodological shift means that data relating to staffing and expenditure from 2000-01 onwards are not directly comparable to data prior to 2000-01.

Sources: table 5A.11

[END]

Background information: Robyn Sheen, Head of Secretariat 03 9653 2184/0419 637 068

Other information: Clair Angel, Media and Publications 02 6240 3239/0417 665 443

Please do not approach other parties for comment before Thursday 27 January 2005.

Media copies of this report are available from Clair Angel on 03 9653 2244.

Hard copies of this publication are available from Pirion/J.S. McMillan (ph: 02 9795 1200 or email custserv@jsmcmillan.com.au). The report can also be accessed via the Internet at <http://www.pc.gov.au/> on the morning of release.