

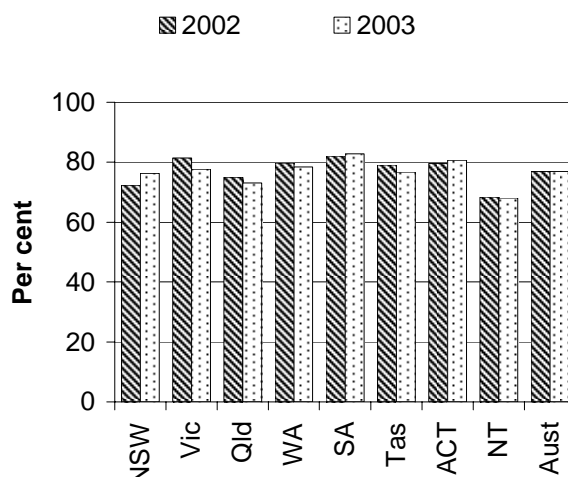
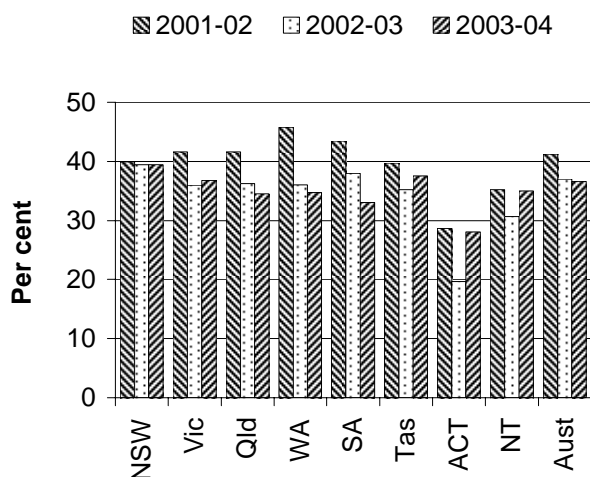
PRIMARY AND COMMUNITY HEALTH (CHAPTER 10)

- The primary and community health sector is the part of the healthcare system most frequently accessed by Australians. It is important in providing preventative care, diagnosis and treatment of illness, and referral to other healthcare services. The sector includes general practice and community health services.
- In 2003-04 there were 24 323 general practitioners (GPs) and other medical practitioners (OMPs) billing Medicare in Australia (p. 10.6). This translates to 16 872 full time workload equivalent (FWE)¹ GPs. Australia-wide in 2003-04, there were 83.8 FWE GPs per 100 000 people (p. 10.6).
- Australian Government expenditure on GP services was around \$3.6 billion in 2003-04, or about \$178 per person in Australia (p.10.3).
- Government expenditure on community and public health was \$4.4 billion in 2002-03 (AIHW 2004c) (p 10.5). This category includes expenditure on some public health activities that are not covered in the chapter.

Selection of results

GPs who used the Enhanced Primary Care items for care planning and case conferencing^a (p. 10.29)

Influenza vaccination coverage, people aged 65 years or over 2002–2003 (p. 10.39)



See over for data and footnotes.

See over for data and footnotes.

- Enhanced Primary Care (EPC) items for care planning and case conferencing provide a framework for a multidisciplinary approach to healthcare for people with chronic or terminal medical conditions and complex, multidisciplinary care needs. The proportion of GPs who used these EPC items is an indicator of the continuity aspect of the quality of primary healthcare services. Nationally, the proportion of GPs using these EPC items declined from 41.3 per cent in 2001-02 to 36.6 per cent in 2003-04. In 2003-04, the proportion of GPs who

¹ 'Full time workload equivalents' are calculated for each practitioner by dividing the practitioner's Medicare billing by the mean billing of full-time practitioners for that reference period. For example, an FWE value of 2 indicates that the practitioner's total billing is twice that of the mean billing of a full-time practitioner.

used the EPC items for care planning and case conferencing was highest in NSW (39.5 per cent) and lowest in the ACT (28.1 per cent) (pp. 10.28–10.29).

- Influenza vaccination for older people has been demonstrated to reduce hospitalisation and death (National Health Performance Committee unpublished). In 2003, 76.9 per cent of people aged 65 years or over were vaccinated against influenza in Australia (AIHW 2004d). The same proportion was vaccinated in 2002 (AIHW 2003). The proportion of people aged 65 years or over who were vaccinated was highest in SA (82.8 per cent) and lowest in the NT in 2003 (68.1 per cent). (p. 10.39). Hospitalisation rates for influenza and other vaccine preventable conditions are also reported (p. 10.41).

Data for charts on previous page

	NSW	Vic	Qld	WA	SA	Tas	ACT	NT	Aust
<i>GPs who used the EPC items for care planning and case conferencing (per cent)^a</i>									
2001-02	39.9	41.6	41.6	45.8	43.5	39.7	28.7	35.2	41.3
2002-03	39.5	36.0	36.3	36.0	38.0	35.2	19.6	30.7	37.0
2003-04	39.5	36.8	34.5	34.7	33.1	37.6	28.1	35.0	36.6
<i>Influenza vaccination coverage, people aged 65 years or over, 2002–2003 (per cent)</i>									
2002	72.4	81.4	75.0	79.7	82.0	79.0	79.6	68.4	76.9
2003	76.3	77.7	73.1	78.4	82.8	76.7	80.7	68.1	76.9

^a The number of active GPs who claimed at least one of the EPC items for care planning and case conferencing during the financial year, as a proportion of all active GPs. Active GPs are registered GPs or OMPs who claimed 375 or more non-referred attendances on average per quarter.

Source: Department of Health and Ageing (unpublished); figure 10.15 and table 10A.25; Australian Institute of Health and Welfare (2004c; 2003); figure 10.23 and table 10A.34.

[END]

Background information: Robyn Sheen, Head of Secretariat 03 9653 2184/0419 637 068

Other information: Clair Angel, Media and Publications 02 6240 3239/0417 665 443

Please do not approach other parties for comment before Thursday, 27 January 2005.

Media copies of this report are available from Clair Angel on 02 6240 3239.

Hard copies of this publication are available from Pirion/J.S. McMillan (ph: 02 9795 1200 or email custserv@jsmcmillan.com.au). The report can also be accessed via the Internet at <http://www.pc.gov.au/> on the morning of release.