

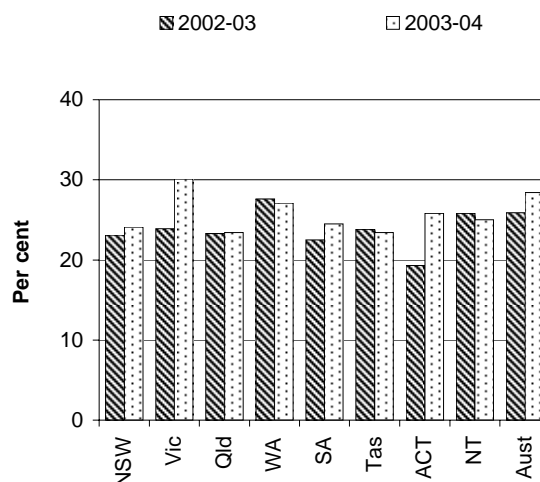
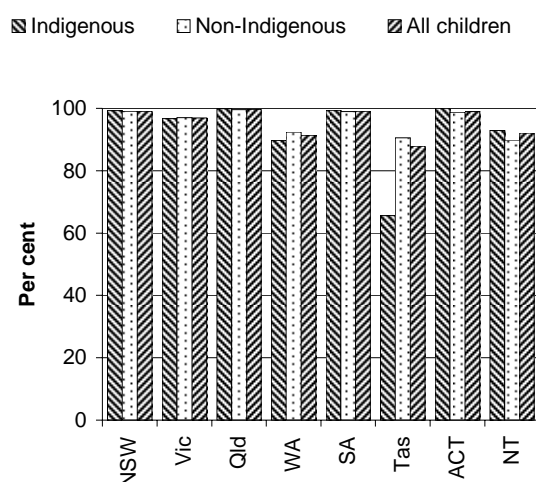
PROTECTION AND SUPPORT SERVICES (CHAPTER 15)

- This chapter reports on child protection, out-of-home care, and supported accommodation and assistance services.
- Total recurrent expenditure on child protection and out-of-home care across Australia was \$1041.4 million in 2003-04 (p. 15.10). Recurrent expenditure on the Supported Accommodation Assistance Program (SAAP) was \$303.8 million across Australia in 2003-04 (p. 15.40).
- Around 144 942 children aged 0–16 years were the subject of child protection notifications in 2003-04 (p. 15.8). At 30 June 2004, at least 14 627 children were on care and protection orders (excluding NSW, which could not provide data for 2004) (p. 15.9), and approximately 21 795 children were in out-of-home care (p. 15.10). There were around 100 200 SAAP clients in 2003-04 (table 15A.176).

Selection of results

Children aged under 12 years in out-of-home care and in a home based placement, 2004 (p. 15.22)

Clients who returned to a SAAP service after having exited the program less than 12 months earlier (p. 15.61)



See over for data and footnotes.

See over for data.

- Placing children with their relatives or kin is generally preferred for all children in out-of-home care. The proportion of all children placed with relatives or kin (at 30 June 2004) ranged from 55.5 per cent in NSW to 16.1 per cent in SA (p. 15.21).
- Placing Indigenous children in circumstances consistent with the Aboriginal Child Placement Principle is generally considered to be in their best interests. The proportion of Indigenous children in out-of-home care at 30 June 2004 who were placed in accordance with the principle ranged from 81.0 per cent in WA to 40.4 per cent in Tasmania (p. 15.23). Other significant indicators include stability of placement (p. 15.18) and child protection and out-of-home care efficiency indicators (from p. 15.26).

[MORE]

- SAAP indicators include: access for those seeking SAAP services (p. 15.42); existence of a support plan for SAAP clients (p. 15.48); SAAP efficiency indicators (from p. 15.51); client's labour force status (p. 15.60) and income source (p. 15.63) after receiving SAAP services.

Progress since the 2004 Report

This Report continues to refine and improve the indicators that are reported in the Protection and Support chapter.

Data for charts on previous page

Proportion of children aged under 12 years in out-of-home care and in a home based placement, by Indigenous status, 30 June 2004 (as a proportion of all children under 12 years in out-of-home care)^{a, b}

	NSW	Vic	Qld	WA	SA	Tas	ACT	NT
Indigenous	99.3	96.7	99.9	89.8	99.4	65.6	100.0	92.9
Non-Indigenous	99.0	97.0	99.6	92.4	99.0	90.5	98.7	89.8
All children	99.1	96.9	99.6	91.4	99.1	87.9	99.0	92.1

^a Excluding family group homes.

^b The percentage of children under 12 years in home-based placements was calculated using as the denominator the total number of children under 12 years old in out-of-home placement, by Indigenous status, at 30 June where placement type was known.

Source: table 15A.18.

Proportion of clients who returned to a SAAP service after having exited the program less than 12 months earlier

	NSW	Vic	Qld	WA	SA	Tas	ACT	NT	Aust
2002-03	23.1	23.9	23.3	27.6	22.5	23.8	19.3	25.8	25.9
2003-04	24.1	30.1	23.4	27.1	24.5	23.4	25.8	25.0	28.4

Source: table 15A.176.

[END]

Background information: Robyn Sheen, Head of Secretariat 03 9653 2184/0419 637 068

Other information: Clair Angel, Media and Publications 02 6240 3239/0417 665 443

Please do not approach other parties for comment before Thursday 27 January 2005.

Media copies of this report are available from Clair Angel on 03 9653 2244.

Hard copies of this publication are available from Pirion/J.S. McMillan (ph: 02 9795 1200 or email custserv@jsmcmillan.com.au). The report can also be accessed via the Internet at <http://www.pc.gov.au/> on the morning of release.