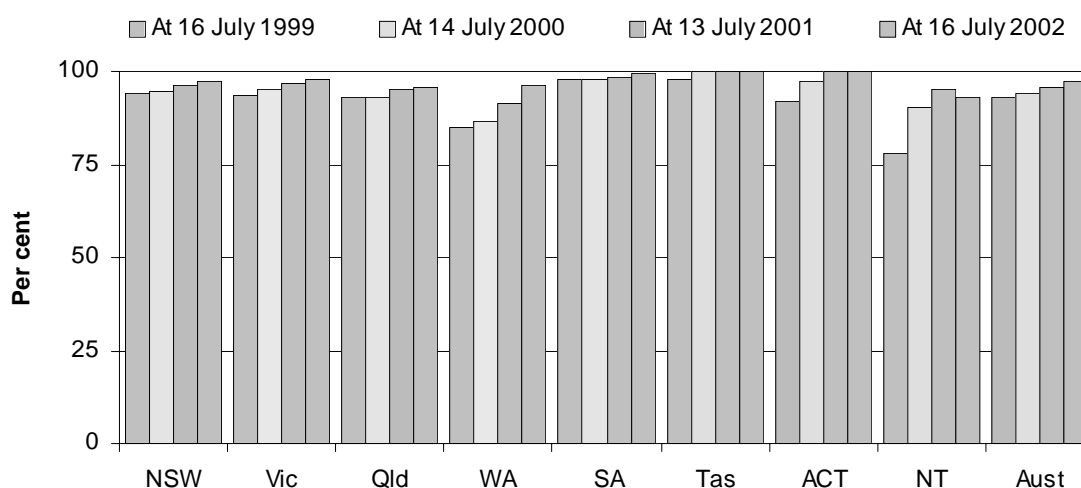


CHILDREN’S SERVICES (CHAPTER 14)

- The focus of this chapter is on government funded and/or provided child care and preschool services.
- Around 850 000 children accessed government funded and/or provided child care services in 2001-02 (575 000 aged 5 years or younger) (p. 14.8). At least 240 000 children attended government funded and/or provided preschool services in the same year (214 000 of these were in the year before commencing full time schooling) (p. 14.10). Some children attended both child care and preschool services.

Selection of results

Accredited centres as a proportion of centres fully assessed under the Quality Improvement and Accreditation System (p. 14.6)



See over for data and footnotes.

- Commonwealth Government recurrent funding per hour of service for centre based long day care services ranged from \$3.44 in Queensland to \$1.47 in the ACT in 2001-02. Commonwealth Government recurrent funding per hour of service for family day care services for the same period ranged from \$4.80 in NT to \$3.70 in the ACT. Commonwealth Government recurrent funding per hour of service for outside school hours care services for the same period ranged from \$3.67 in SA to \$1.66 in the NT (p. 14.29).

Progress since 2002 Report

A full Commonwealth Census of Child Care Services was conducted in May 2002 and this enabled more comprehensive reporting in the 2003 Report.

[MORE]

Progress has been made in reporting data on: a quality indicator — staff qualifications, and an efficiency indicator — State and Territory Government total expenditure. There has also been further refinement to data counting rules and collection processes (which is expected to result in improved comparability of data across jurisdictions).

Data for chart on previous page

Accredited centres as a proportion of centres fully assessed under the Quality Improvement and Accreditation System^{a, b}

	<i>NSW</i>	<i>Vic</i>	<i>Qld</i>	<i>WA</i>	<i>SA</i>	<i>Tas</i>	<i>ACT</i>	<i>NT</i>	<i>Aust</i>
1999	94.2	93.3	93.2	85.1	97.7	98.1	91.9	78.0	93.0
2000	94.6	95.3	93.1	86.7	97.8	100.0	97.3	90.5	94.0
2001	96.3	96.8	94.9	91.2	98.4	100.0	100.0	95.3	95.9
2002	97.6	98.0	95.8	96.3	99.5	100.0	100.0	92.9	97.3

^a Figures may change daily and are updated every six weeks following a National Childcare Accreditation Council meeting. ^b Results for Tasmania, the ACT and the NT may be unduly influenced by the relatively small number of services (57, 81 and 45 respectively, at 16 July 2002) participating in the process.

Source: table 14A.2.

[END]

Background information: Dr Robyn Sheen, Assistant Commissioner 03 9653 2184/0419 637 068

Other information: Ms Clair Angel, Media and Publications 02 6240 3239/0417 665 443

Please do not approach other parties for comment before Thursday, 6 February 2003.

Media copies of this report are available from Clair Angel on 03 9653 2244.

Other requests for this report should be directed to Government Info Shops. The report can also be accessed via the Internet at <http://www.pc.gov.au/> on the morning of release.