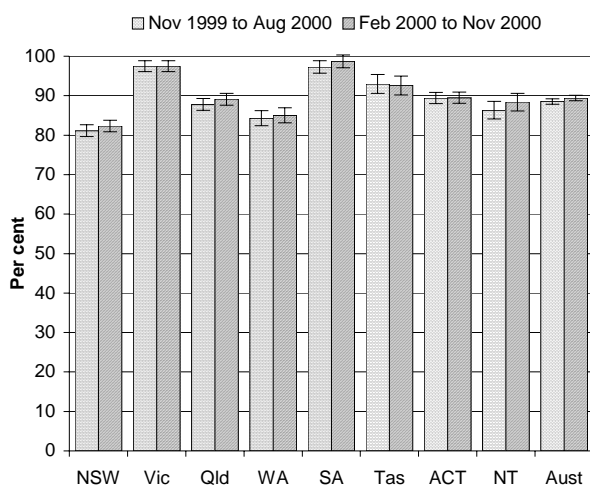


EMERGENCY MANAGEMENT (CHAPTER 11)

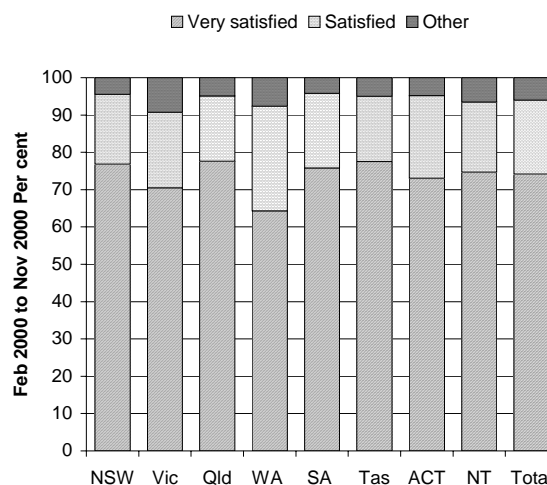
- The focus of reporting on emergency management is on emergency services provided or funded by governments which involve fire and ambulance service providers. There were a total of 347 030 reports to fire authorities in 2000-01 (**table 11A.2**). Approximately \$1.3 billion was spent in 2000-01 on fire services (**p. 576**). Ambulance services attended 2 million incidents nationally in 2000-01 (**p. 581**). Approximately \$885 million was spent on ambulance services (**p. 578**).

Selection of results

Households with at least one fire
safety measure^a (**p. 594**)



Satisfaction with ambulance services,
persons who had used an ambulance service
in the last 12 months^b (**p. 605**)



See over for data and footnotes.

See over for data and footnotes.

- Nationally, 72 per cent (estimated) of households had an operational smoke alarm or smoke detector installed in the February 2000 to November 2000 quarters, remaining relatively constant with 71 per cent in the November 1999 to August 2000 quarters. In the February 2000 to November 2000 quarters, the proportion of households with an operational smoke alarm or smoke detector was highest in Victoria and SA (both 95 per cent) and lowest in the NT (40 per cent) (**p. 596**).

Progress since the 2001 Report

The year saw the quality of data improve through revised definitions in several areas, including staff numbers, caseload, ambulance response times and cardiac arrest survival. Information on the scope of emergency services provided is more comprehensive this year. The Review intends to include the performance of agencies involved in road accident rescues in future years.

Data for charts on previous page

	NSW	Vic	Qld	WA	SA	Tas	ACT	NT	Aust
<i>Estimated households with at least one fire safety measure (per cent)^a</i>									
Nov 1999 to Aug 2000	81.1	97.5	87.8	84.3	97.3	93.0	89.4	86.3	88.5
Feb 2000 to Nov 2000	82.3	97.5	89.1	85.0	98.7	92.6	89.5	88.4	89.4
<i>Ambulance users in the previous 12 months who were satisfied with ambulance services (per cent)^b</i>									
Feb 2000 to Nov 2000									
Very satisfied	76.8	70.5	77.7	64.3	75.9	77.5	73.0	74.7	74.2
Satisfied	18.7	20.2	17.4	28.1	20.0	17.5	22.2	18.7	19.8
Other	4.5	9.2	4.9	7.6	4.2	5.0	4.8	6.5	6.0

^a Confidence intervals have been indicated on the bars in this figure. Small differences in the results should be viewed with care as they may be affected by sample and estimate size (section 11.8). The total number of households with at least one fire safety measure is smaller than the sum of the individual components because a number of households have more than one fire safety measure installed or followed. Only the final quarter are new data because the PSM ceased. Three quarters already reported were repeated with the new data to preserve data integrity. ^b Data are obtained quarterly for persons aged 18 years and over. Small differences in the results should be viewed with care as they may be affected by sample and estimate size (see section 11.8). Only the final quarter is new data because the Population Survey Monitor ceased. Three quarters already reported were repeated with the new data to preserve data integrity. Fire safety measures include smoke alarms/detectors, safety switches/circuit breakers and fire extinguishers.

Sources: ABS (2001b); figure 11.10; table 11A.9. ABS (2001b); figure 11.20; table 11A.21.

[END]

Background information: Dr Robyn Sheen, Assistant Commissioner 03 9653 2184/0419 637 068

Other information: Ms Clair Angel, Media and Publications 02 6240 3239/0417 665 443

Please do not approach other parties for comment before Wednesday 30 January 2002.

Media copies of this report are available from Clair Angel on 03 9653 2244.

Other requests for this report should be directed to Government Info Shops. The report can also be accessed via the Internet at <http://www.pc.gov.au/> on the morning of release.