

SERVICES FOR PEOPLE WITH A DISABILITY (CHAPTER 13)

Reporting on services for people with a disability focuses on the performance of the Australian, State and Territory governments under the five year disability agreement which targets people with a disability who require ongoing or long term episodic support.¹

The number of people aged under 65 years in Australia, with a profound or severe core activity limitation, was estimated as 677 585 in 2003 (table 13A.14).

Total government expenditure under the Commonwealth State/Territory Disability Agreement (CSTDA) was \$3.3 billion in 2003-04, a real increase of 6.0 per cent from 2002-03 (table 13A.38). Of all CSTDA funding in 2003-04, 71.6 per cent came from State and Territory governments and 28.4 per cent came from the Australian Government (table 13A.39).

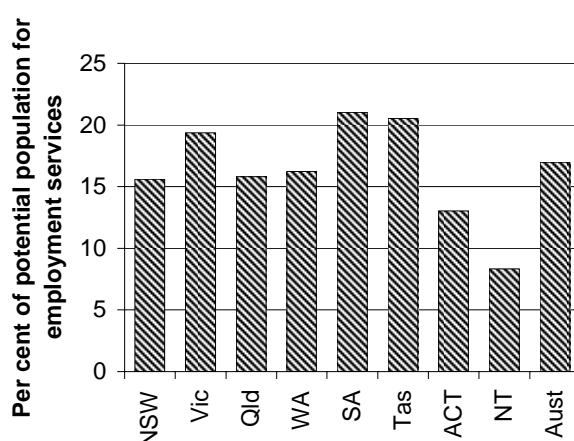
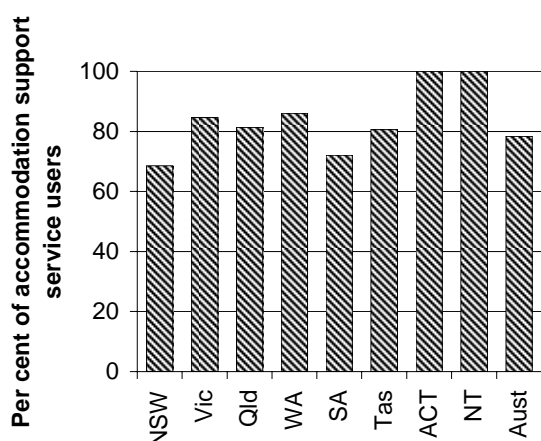
From 1 January 2003 to 30 June 2003, an estimated 148 110 service users received services provided under the CSTDA (table 13A.4).

A redeveloped CSTDA National Minimum Data Set (NMDS) collection was implemented during 2002-03. Data for 2002-03 from the new collection were only available for the period 1 January 2003 to 30 June 2003. The development of the CSTDA NMDS has meant that the volume and complexity of the data are much greater than in previous snapshot day collections. As usual with major changes to data collections, some data quality reductions have resulted in the first collection. These issues limit the potential to generalise from the data.

Selection of results

Users of CSTDA funded community accommodation and care services, as a proportion of all accommodation support service users

Users of CSTDA employment services as a proportion of the total potential population for employment services



See over for data and footnotes.

See over for data and footnotes.

¹ Following negotiations between the Australian, State and Territory governments in 2003, a third five-year disability services agreement — Commonwealth State/Territory Disability Agreement — has been entered into by all jurisdictions for the period 1 July 2002 to 30 June 2007. This agreement forms the basis for the provision and funding of specialist services for people with a disability.

In recent years, State and Territory governments have generally sought to increase the provision of accommodation support services outside institutional settings for people with a disability, aiming to assist people with a disability to live as both valued and participating members of the community. Nationally, 78.4 per cent of accommodation support service users received community accommodation and care services from 1 January 2003 to 30 June 2003. The ACT and the NT had the highest proportion of users of accommodation support services receiving community accommodation and care services (both 100 per cent) and NSW had the lowest (68.5 per cent) (table 13A.10).

Employment services for people with a disability were the main responsibility of the Australian Government under the CSTDA. Nationally, 17.0 per cent of the estimated potential population were using employment services from 1 January 2003 to 30 June 2003. Across jurisdictions, the proportion was highest in SA (21.0 per cent) and lowest in the NT (8.3 per cent) (table 13A.16).

Data for charts on previous page

Users of CSTDA funded community accommodation and care services as a proportion of all users of accommodation support services (per cent)^{a, b, c, d}

	NSW	Vic	Qld	WA	SA	Tas	ACT	NT	Aust
2003	68.5	84.7	81.3	86.0	72.0	80.6	100.0	100.0	78.4

^a Service user data are estimates after a statistical linkage key is used to account for individuals who received services from more than one service type outlet from 1 January 2003 to 30 June 2003. Totals may not be the sum of the components because individuals might have accessed services from more than one State or Territory and/or from both accommodation service types over the six month period. ^b Data for service users of CSTDA funded accommodation support services exclude psychiatric services identified by the jurisdiction. ^c Community accommodation and care services include group homes, attendant care/personal care, in-home accommodation support, alternative family placement and other accommodation support. ^d The service user data used to derive this indicator have quality issues related to the development of the new CSTDA NMDS. These issues include differences in the proportion of service outlets that responded across jurisdictions. This indicator thus needs to be interpreted with care.

Source: AIHW (2004a and 2004b); table 13A.10.

Users of CSTDA employment services as a proportion of the total potential population for employment services (per cent)^{a, b, c}

	NSW	Vic	Qld	WA	SA	Tas	ACT	NT	Aust
2003	15.6	19.4	15.8	16.2	21.0	20.5	13.0	8.3	17.0

^a Data are estimates. Population estimates of 9000 or less have a relative standard error of 25 per cent or more. ^b Service user data are estimates after a statistical linkage key is used to account for individuals who received services from more than one service type outlet from 1 January 2003 to 30 June 2003. Totals might not be the sum of the components because individuals may have accessed services from more than one State or Territory over the six month period. ^c The potential population estimates (national age and sex rates applied to each jurisdiction) for employment services are the number of people aged 15-64 years who have a severe or profound core activity limitation, multiplied by both the Indigenous factor and the labour force participation rate for each jurisdiction.

Source: ABS (2002a, 2002b, 2004b); AIHW (2004a, 2004b); AIHW analysis of the 2003 ABS Survey of Disability, Ageing and Carers data; table 13A.16.

[END]

Background information: Robyn Sheen, Head of Secretariat 03 9653 2184/0419 637 068

Other information: Clair Angel, Media and Publications 02 6240 3239/0417 665 443

Please do not approach other parties for comment before Thursday, 27 January 2005.

Media copies of this report are available from Clair Angel on 03 9653 2244. Other requests for this report should be directed to Pirion/J.S. McMillan (ph: 02 9795 1200 or email custserv@jismcmillan.com.au). The report can also be accessed via the Internet at <http://www.pc.gov.au/gsp> on the morning of release.