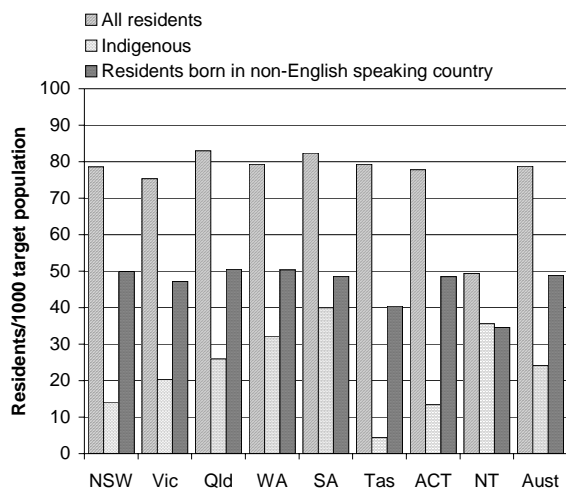


## AGED CARE SERVICES (CHAPTER 12)

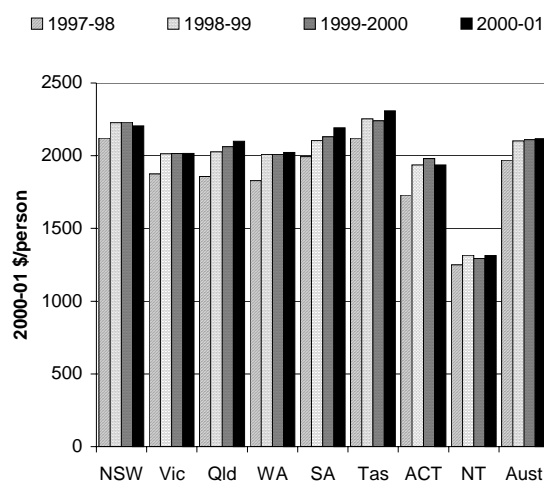
- The focus of this chapter is on government funded residential and community based services for frail older people. The main services are residential services (high care services, low care services and services providing a mixture of high and low care, and residential respite services), community services, respite services and assessment services.
- The Commonwealth Government provided the majority of annual funding for residential aged care services — \$3.7 billion in 2000-01, or approximately 71 per cent of the cost of care. Total national expenditure on Home and Community Care (HACC) and respite services was \$999 million in 2000-01, of which HACC expenditure represented \$932 million. Commonwealth, State and Territory governments jointly fund the HACC program, with the Commonwealth Government contributing approximately 60.8 per cent and State and Territory governments funding the remainder (p. 643).
- Nationally, there were approximately 142 013 places (permanent and respite) in residential care facilities (72 266 in high care services, 34 001 in low care services and 35 746 in services providing a mixture of high and low care) at June 2001 (p. 646). The number of Community Aged Care Packages increased by approximately 31 per cent between 2000 and 2001<sup>1</sup> (p.649).

### Selection of results

Representation of people in residential care, 2001  
(p. 654)



Commonwealth expenditure on residential services  
(p. 666)



See over for data and footnotes.

See over for data and footnotes.

- Commonwealth Government expenditure (including expenditure by the DVA) on residential care services per person aged 70 years and over plus Indigenous people aged 50–69 years varied across jurisdictions in 2000-01, ranging from \$2309 in Tasmania to \$1313 in the NT.

<sup>1</sup> Per person aged 70 years and over.

The data in this year's Report are different from last year's data as a result of the inclusion of Indigenous people aged 50–69 years in the target population (p.666).

- The quality indicator 'Compliance with standards for residential care' is reported for the first time this year. Data on accreditation approvals from the Aged Care Standards and Accreditation Agency shows that the highest proportion of three-year accreditation approvals was in the ACT (100 per cent) (p. 663).
- In NSW, 87.1 per cent of people entered high care residential placements within three months of assessment by an Aged Care Assessment Team, compared with 72.0 per cent in Queensland. The proportion of people entering low care residential care within three months of being assessed ranged from 67.7 per cent in NSW to 44.1 per cent in the ACT (p. 658).
- The number of complaints registered per 1000 residents in 2000–01 ranged from 12.7 in WA to 11.1 in SA (excluding Tasmania, the ACT and the NT which are not directly comparable because the small number of residents in these jurisdictions distorts the number of complaints per 1000 residents) (p. 665).

### Progress since the 2001 Report

Improvements to reporting this year include data for the indicator 'Compliance with service standards for residential care' which is reported for the first time.

Descriptive information on Veterans' Home Care services is also included in the chapter. There are still gaps in reporting of key indicators however.

### Data for charts on previous page

	NSW	Vic	Qld	WA	SA	Tas	ACT	NT	Aust
<i>Residents per 1000 target population 2001</i>									
All residents <sup>a</sup>	78.6	75.3	82.9	79.3	82.4	79.3	77.8	49.4	78.8
Indigenous <sup>b</sup>	14.1	20.3	25.9	32.2	40.0	4.4	13.5	35.6	24.2
Residents born in non-English speaking country <sup>c</sup>	50.0	47.2	50.5	50.4	48.6	40.4	48.5	34.5	48.8
<i>Commonwealth expenditure on residential services, 2001 (\$ per person aged 70 years and over plus Indigenous 50-69 years)<sup>d</sup></i>									
	2206	2016	2100	2023	2193	2309	1937	1313	2118

<sup>a</sup> All residents data are per 1000 people aged 70 years and over plus Indigenous people aged 50–69 years. <sup>b</sup> Indigenous residents per 1000 Indigenous people aged 50 years and over. <sup>c</sup> Residents from non-English speaking countries per 1000 people from non-English speaking countries aged 70 years and over. <sup>d</sup> Includes expenditure on nursing home benefits, hostel subsidies and residential respite. Includes the Department of Veterans' Affairs contribution (\$417 million in 2000-01).

Source: figures 12.8 and 12.3; tables 12A.9, 12A.11, 12A.13 and 12A.44.

[END]

**Background information:** Dr Robyn Sheen, Assistant Commissioner 03 9653 2184/0419 637 068

**Other information:** Ms Clair Angel, Media and Publications 02 6240 3239/0417 665 443

**Please do not approach other parties for comment before Wednesday 30 January 2002.**

Media copies of this report are available from Clair Angel on 03 9653 2244.

Other requests for this report should be directed to Government Info Shops. The report can also be accessed via the Internet at <http://www.pc.gov.au/> on the morning of release.