

Under embargo until 1.00am on Friday, 29 January 2010

For personal use only. Third parties should not be approached until the embargo is lifted.

AGED CARE SERVICES (CHAPTER 13)

- This chapter reports on government funded assessment, residential and community based services for frail older people.
- Total government expenditure reported on aged care services in 2008-09 was \$10.1 billion. This included residential care services (\$6.7 billion) and community care services (\$2.9 billion). Community care services included expenditure of \$1.8 billion on Home and Community Care (HACC) with the Australian Government contributing \$1.1 billion and the states and territories contributing \$698.2 million. Also, The Community Aged Care Program, Extended Aged Care at Home (EACH) and EACH Dementia programs are funded by the Australian Government and had expenditure of \$736.0 million in 2008-09 (pp. 13.14-19).
- There were 175 225 places (excluding flexible care) in residential care facilities (75 145 in high care services, 5 568 in low care services and 94 512 in services with a mixture of high and low care) at June 2009 (p. 13.21). There were 46 709 operational CACP, EACH and EACH Dementia places at 30 June 2009 and 862 488 HACC clients in 2008-09 (p. 13.26).

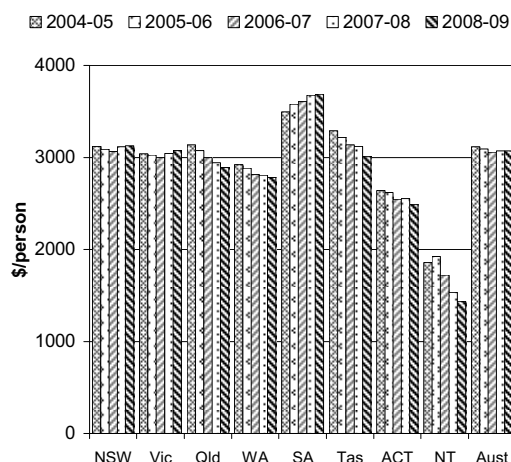
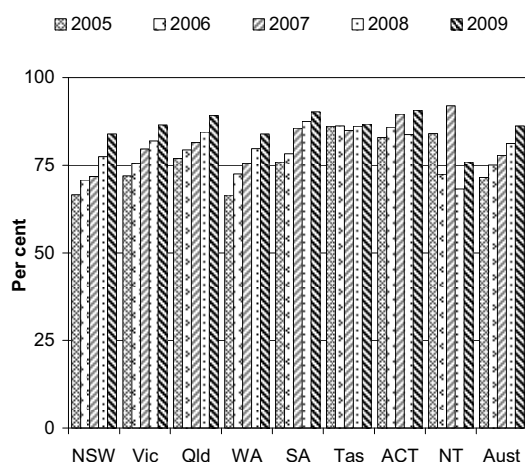
Objectives of aged care services

The aged care system aims to promote the wellbeing and independence of frail older people and their carers through the funding and delivery of care services that are accessible, appropriate to needs, high quality and efficient.

Selection of results

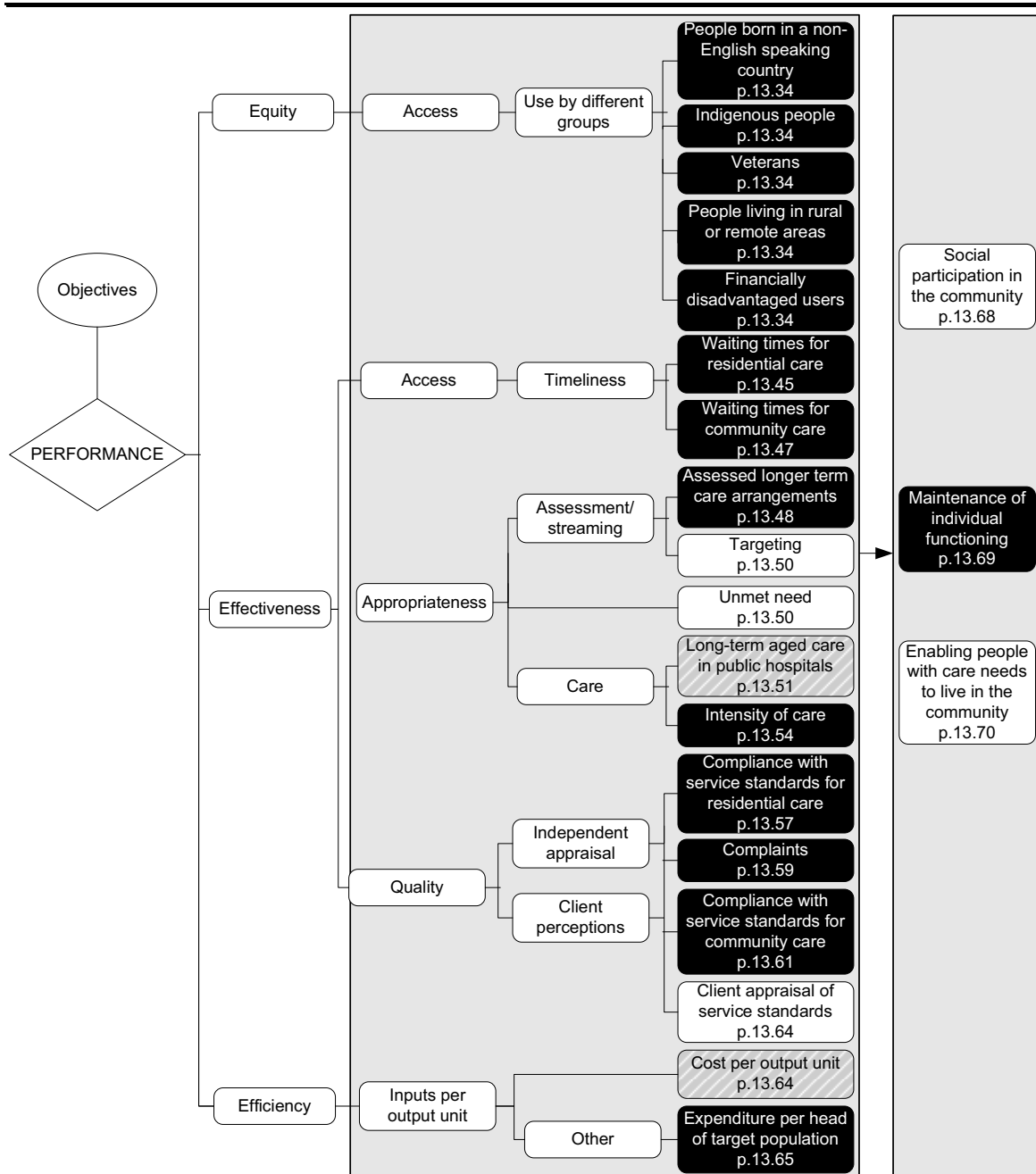
Proportion of residents who changed from low care to high care and remained in the same aged care service, June^a (p. 13.56)

Australian Government (DoHA and DVA) real expenditure on residential services per person aged 70 years or over plus Indigenous people aged 50–69 years (2008-09 dollars)^a (p. 13.66)



^a Data and caveats for these figures are available electronically on the CD-ROM enclosed with the Report and from the website for the Review of Government Service Provision (www.pc.gov.au/gsp/reports/rogs/2010). Data may be subject to revision. The most recent data will be available on the Review website.

Performance indicators for aged care services (figure 13.13, p. 13.33)



Key to indicators

- Text** Data for these indicators comparable, subject to caveats to each chart or table
- Text** Data for these indicators not complete or not directly comparable
- Text** These indicators yet to be developed or data not collected for this Report: chapter contains explanatory text

Developments in reporting since the 2009 Report

A number of additions and improvements have been made to the chapter this year, including:

- inclusion of data for the first time on access to aged care residential services for veterans, within the indicator 'use by different groups'
- inclusion of additional data for the first time for EACH-D services including:
 - aged care recipients per 1000 people aged 70 years or over plus Indigenous people aged 50–69 years as a proportion of all residents, by locality and recipients from a non-English speaking country
 - Indigenous aged care recipients per 1000 Indigenous people aged 50 years or over and as a proportion of all recipients and by locality
 - EACH-D recipients by age-sex specific usage rates per 1000 people by jurisdiction and remoteness
- replacing the measure 'average residents per room' with a more comprehensive measure 'percentage of compliant services' for the indicator 'compliance with service standards for residential care'
- redefining HACC services received per 1000 people to only include people aged 70 years and over plus Indigenous people aged 50 to 69. In previous years, all people in receipt of HACC services regardless of age were reported
- inclusion of an additional attachment table to summarise Government expenditure on aged care services and revisions to supporting attachment tables to report more comprehensive data and to better reflect expenditure categories for assessment and information services, residential care, community care and services delivered in mixed delivery settings.

[END]

Background information: Lawrence McDonald, Head of Secretariat 03 9653 2178/0421 584 905

Other information: Clair Angel, Media and Publications 02 6240 3239/0417 665 443

Please do not approach other parties for comment before Friday 29 January 2010.

Media copies of this report are available from Clair Angel on 02 6240 3239.

Hard copies of this publication are available from Canprint Communications (ph: 1300 889 873 or email sales@infoservices.com.au). The report will be available via the Internet at www.pc.gov.au on the morning of Friday 29 January 2010.

Tables with an 'A' suffix (eg table 13A.5) are in the attachments on the CD-ROM or on the Review website.