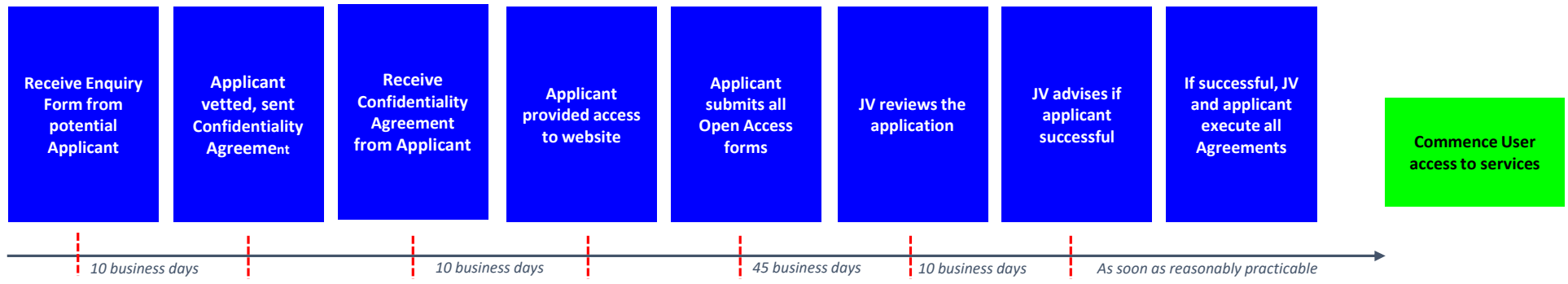


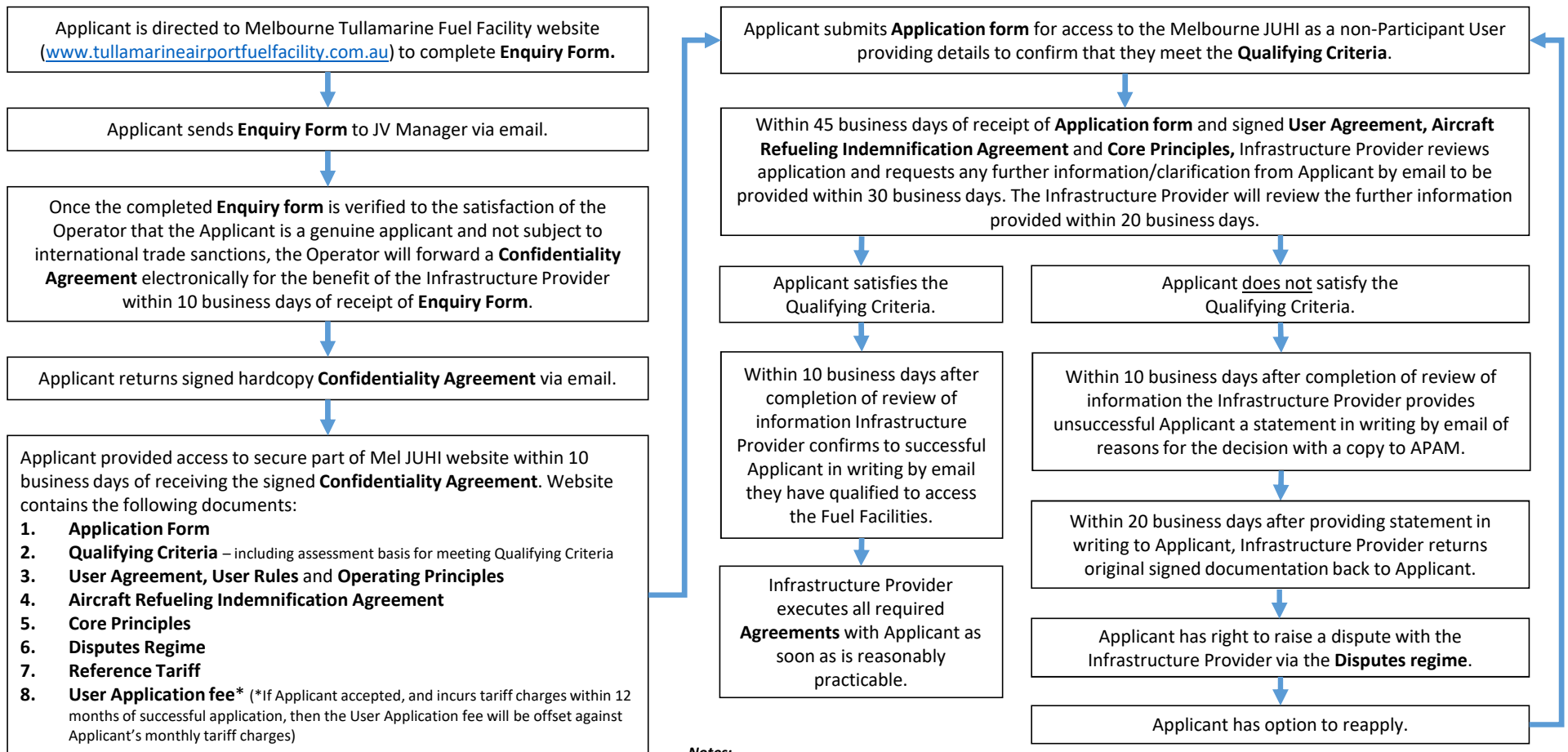
## Application, Assessment & Approval Process for Applicant access to the Melbourne Tullamarine Fuel Facilities

### User Application process at Melbourne JUHI



The next page provides further detail on Application, Assessment and Approval Process

## Application, Assessment & Approval Process for Applicant access to the Melbourne Tullamarine Fuel Facilities



### Notes:

1. Timeframes indicative only.
2. The definitions and rules of interpretation set out in the **User Rules** apply to this document, unless the context requires otherwise.

## **Three steps to becoming a fuel supplier at Melbourne Airport** for Applicants to the Melbourne Tullamarine Fuel Facilities

### Three steps to becoming a fuel supplier at Melbourne Airport

1. Secure arrangements for continuous supply of jet fuel to JUHI
2. **Become a user at Melbourne JUHI ([Enquiry Form](#))**
3. **Secure arrangements for into plane services**