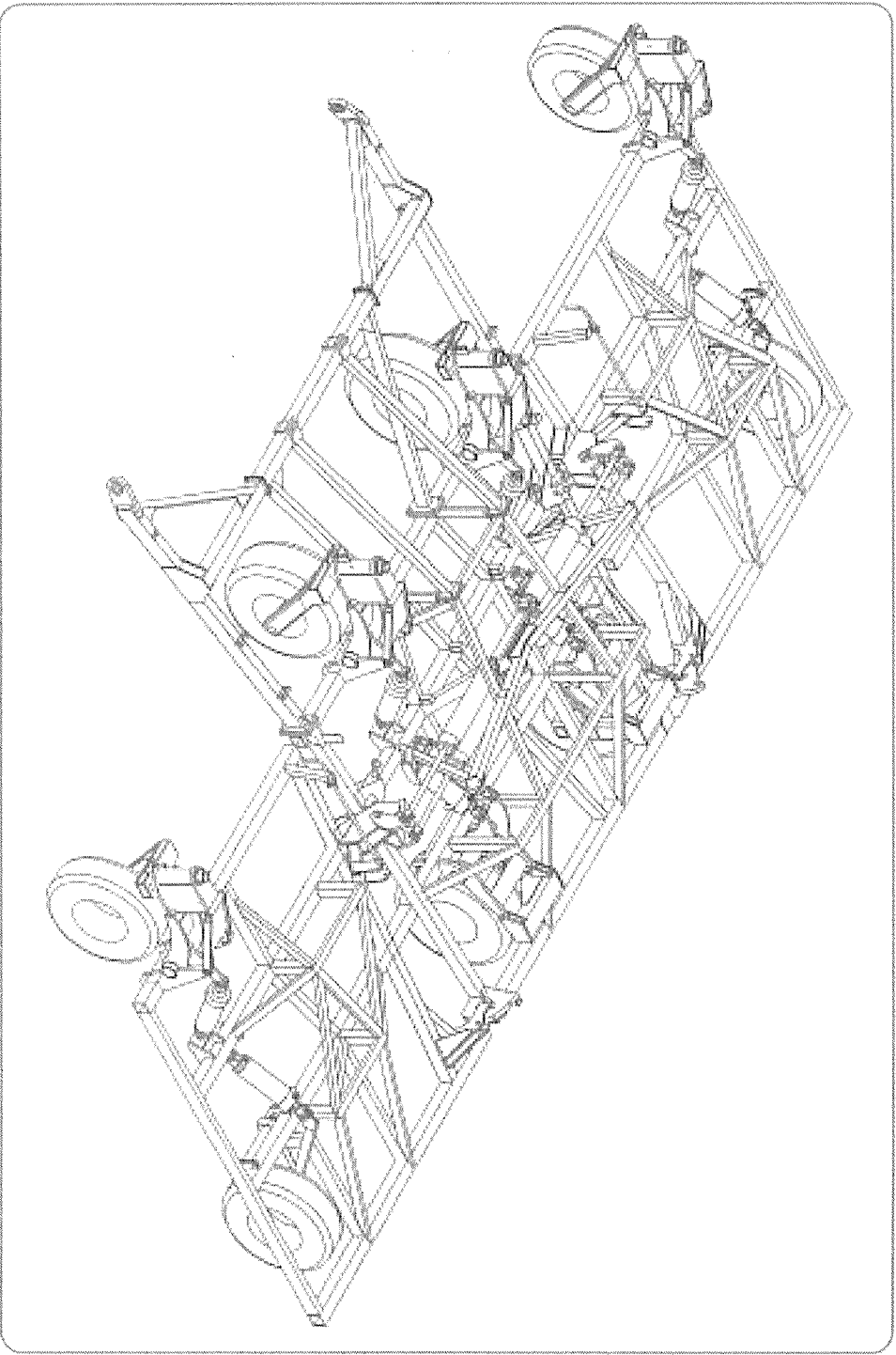


THE T30 SERIES

Ag-BOSS

THE RIGHT TOOL FOR THE JOB

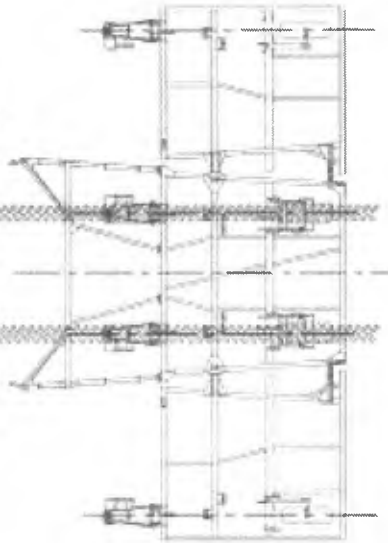


Versatile Scarifier - Direct Drill

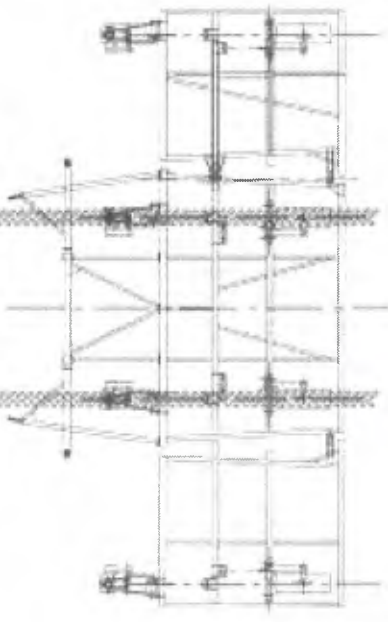
MACHINE SIZES &
SPECIFICATIONS



Nominal Machine Size	Type spacing (mm)	No. of tyres	Sowing width inc. guess row (m)	Tyre size main frame front & rear	Tyre size inner wing	Tyre size outer wing	Transport width (mm) (across wheels)	Transport height (mm)
8 METRE 3 section folding	200	41	8.200	2-9.00x16 @ 2000 c/c	2-9.00x16		5500	3970
	250	33	8.250	2-9.00x16 @ 2000 c/c	2-9.00x16 @ 8000 c/c		5500	3970
	333	24	8.000	2-9.00x16 @ 2000 c/c			5500	3970
9 METRE 3 section folding	200	45	9.000	2-9.00x16			6580	3930
	250	37	9.250	@ 3000 c/c	2-9.00x16		6580	3930
	333	27	9.000	2-9.00x16 @ 3000 c/c	@ 9000 c/c		6580	3930
10 METRE 3 section folding	200	51	10.200	2-12.0x16			6580	4500
	250	41	10.250	@ 3000 c/c	2-9.00x16		6580	4500
	333	31	10.333	2-12.0x16 @ 3000 c/c	@ 10000 c/c		6580	4500
11 METRE 3 section folding	200	55	11.000	2-12.0x16			6580	5000
	250	45	11.250	@ 3000 c/c	2-9.00x16		6580	5000
	333	33	11.000	2-12.0x16 @ 3000 c/c	@ 11000 c/c		6580	5000
12 METRE 3 section folding	200	61	12.200	2-14.5/60x18			6580	5440
	250	49	12.250	@ 3000 c/c	2-9.00x16		6580	5440
	333	36	12.000	2-12.0x16 @ 3000 c/c	@ 12000 c/c		6580	5440
12 METRE 3 section folding	200	61	12.200	2-12.0x16			7580	5000
	250	49	12.250	@ 2000 c/c	2-9.00x16		7580	5000
	333	36	12.000	4-9.00x16 @ 2000 c/c & 4000c/c	@ 12000 c/c		7580	5000
12 METRE 3 section folding	200	61	12.200	2-12.0x16			7580	5000
	250	49	12.250	@ 2000 c/c	2-9.00x16		7580	5000
	333	36	12.000	@ 2000 c/c & 4000c/c	@ 12000 c/c		7580	5000



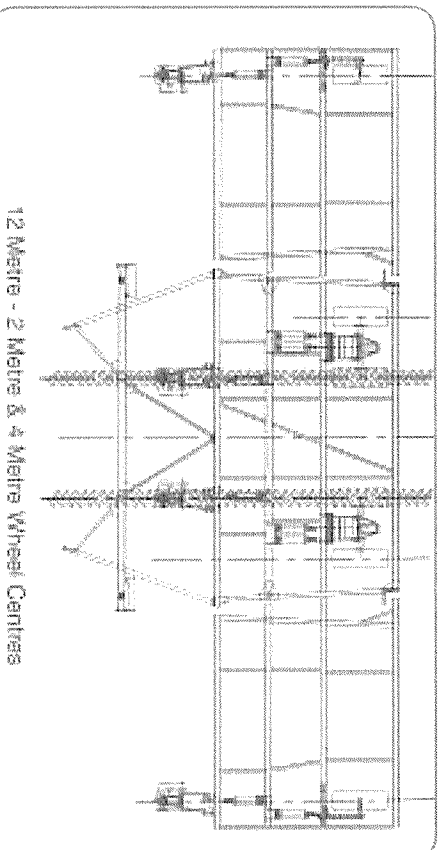
8 Metre - 2 Metre Wheel Centres



9 Metre - 3 Metre Wheel Centres

Nominal Machine Size	Type spacing (mm)	No. of tyres	Sowing width inc. guess row (m)	Tyre size main frame front & rear	Tyre size inner wing	Tyre size outer wing	Transport width (mm) (across wheels)	Transport height
14 METRE 5 section folding	200	71	14.200	2-14.0x18 @ 2000 c/c	2-12.0x16	2-9.00x16	7580	5410
	250	57	14.250	4-12.0x16 @ 2000	@10000 c/c	@14000 c/c	7580	5410
	333	42	14.000	& 4000 c/c			7580	5410
16 METRE 5 section folding	200	81	16.200	2-14.0x18 @ 2000 c/c	2-12.0x16	2-9.00x16	8330	5670
	250	65	16.250	4-12.0x16 @ 2000	@10000 c/c	@16000 c/c	8330	5670
	333	48	16.000	& 4000 c/c			8330	5670
18 METRE 5 section folding	200	91	18.200	2-14.0x18 @ 4000 c/c	2-12.0x16	2-9.00x16	9580	5330
	250	73	18.250	4-12.0x16 @ 4000	@12000 c/c	@18000 c/c	9580	5330
	333	54	18.000	& 6000 c/c			9580	5330
20 METRE 5 section non fold	200	101	20.200	2-12.0x16 @ 4000 c/c	2-12.0x16	2-9.00x16	N/A	N/A
	250	81	20.250	4-12.0x16 @ 4000 c/c	@12000 c/c	@20000 c/c	N/A	N/A
	333	60	20.000	@ 4000 c/c			N/A	N/A
24 METRE 5 section non fold	200	121	24.200	2-12.0x16 @ 4000 c/c	2-12.0x16	2-9.00x16	N/A	N/A
	250	97	24.250	4-12.0x16 @ 4000 c/c	@14000 c/c	@24000 c/c	N/A	N/A
	333	72	24.000	@ 4000 c/c			N/A	N/A
	400	60	24.000				N/A	N/A

Gyral Implements Pty Ltd reserves the right to change any of these specifications without prior notice.



12 Metre - 2 Metre & 4 Metre Wheel Centras

CURVED TYNE

43° curved edge-on 50mm x 20mm factory forged shank with 2 x 7/16" bolt holes @ 1 3/4" to 2 1/4 centres.

	<i>With 300mm Sweep</i>	<i>With Spearpoint</i>
Tyne breakout w/spring	1.3 kN (300 lbf) 1.8 kN (400 lbf)	1.2 kN (270 lbf) 1.6 kN (360 lbf)
Tyne breakout w/hydraulic	1.8 kN (400 lbf)	1.6 kN (360 lbf)
Under frame clearance	675mm	750mm
Jump height	275mm	280mm
Maximum working depth*	125mm	200mm
Transport clearance	310mm	235mm

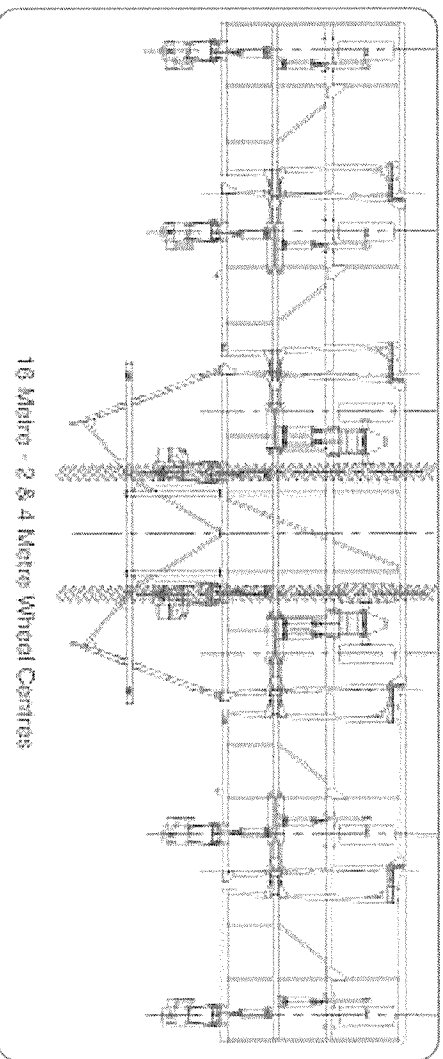
STRAIGHT TYNE

Option 1: 43° edge-on 50mm x 20mm multi-function factory forged adjustable shank with 2 x 7/16" bolt holes @ 1 3/4" to 2 1/4 centres.

Option 2: 43° edge-on 50mm x 20mm direct drill adjustable shank.

Note: Tyne may be adjusted up 85mm and down 15mm

	<i>With 300mm Sweep</i>	<i>With Spearpoint</i>
Tyne breakout w/spring	1.3 kN (300 lbf) 1.8 kN (400 lbf)	1.2 kN (270 lbf) 1.6 kN (360 lbf)
Tyne breakout w/hydraulic	1.8 kN (400 lbf)	1.6 kN (360 lbf)
Under frame clearance	590/690mm	665/765mm
Jump height	250/280mm	255/285mm
Maximum working depth*	140mm	215mm
Transport clearance	295/395mm	220/320mm
Tool Bar	RHS 100mm x 100mm x 6mm	



*Varies under different working conditions.

Gyral Implements Pty Ltd reserves the right to change any of these specifications without prior notice.

Your local Gyral dealer

Gyral

GYRAL IMPLEMENTS PTY LTD ABN: 70 009 682 884

285 McDougal Street (PO Box 6046) Toowoomba Qld 4350

Phone: 07 4634 3388 • Fax: 07 4633 1634

Email: info@gyral.com.au • Website: www.gyral.com.au

- Leading Edge Airseeding Equipment • Primary Tillage Equipment • Secondary Tillage Equipment
- Raised Bed Equipment • Direct Drill/Controlled Traffic Equipment

Double Fold with Standard Centre

Folded Wing Scaribar

Centre Frame
Double Fold with Standard Centre

Narrow Centre	11'10" (3.6m)		
Medium Centre	13'0" (4.0m)	**	*
Standard Centre	17'9" (5.4m)	50' (15.2m)	56' (17.1m)
			61' (18.5m)

NUMBER OF TINES (set on 5 rows)

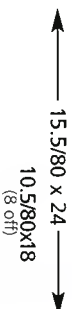
At 7"	(180mm) spacings	85	95	103
At 8 3/4"	(225mm) spacings	69	75	83
At 10 1/2"	(270mm) spacings	57	63	69

FRAME DIMENSIONS

Height (transport)	13'3" (4.0m)	15'7" (4.8m)	16'9" (5.1m)
Width (transport)	23'6" (7.2m)	23'6" (7.2m)	23'6" (7.2m)
Length	27'6"	21'5"	24'8"
A Frame Length	11'6"	11'6"	11'6"
Main Frame Depth	39'0"	32'11"	36'2"
Total Length	(11.9m)	(10.0m)	(11.0m)
WEIGHT (at 7" tine spacing) kg	10,700	12,500	11,500

TYRES

Centre Frame and Wings
Floating Hitch (Front)



KEY MEASUREMENTS

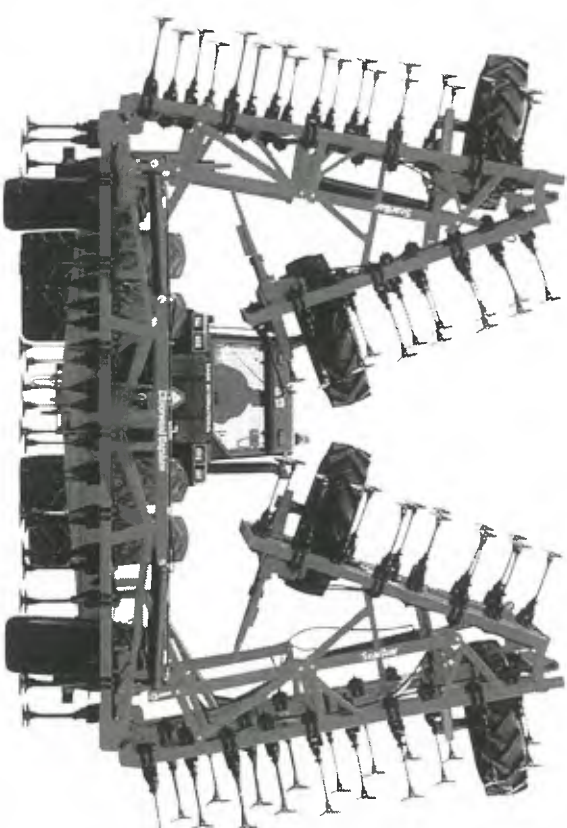
Under Frame Clearance
Under Tine Clearance
Road Transport Clearance
Working Depth

(common to all machines)

28"	(710mm)
23"	(575mm)
11 1/4"	(285mm)
6"	(150mm)

TINE BREAKOUT

Spring Tine – Light Spring	70lb (30kg)	105lb (47kg)	145lb (65kg)
Standard Spring	165lb (74kg)	260lb (116kg)	350lb (157kg)
Dual Spring	235lb (104kg)	365lb (163kg)	485lb (216kg)
Hydraulic Tine	75lb (35kg)		660lb (300kg)



* Floating Hitch option available
** Flotation Hitch model only