A hand holding a black pen is positioned over a document. The document has several red bars on the left side. The text 'Integrated Waste Management The Port Phillip Journey' is overlaid on the right side of the image. The background is a blurred image of a hand holding a pen over a document.

# Integrated Waste Management The Port Phillip Journey

# Pride

- The first and worst of the 7 Deadly Sins

# Pride – SINopsis

- **What it is:**

Pride is excessive belief in one's own abilities, that interferes with the individual's recognition of the grace of God. It has been called the sin from which all others arise. Pride is also known as Vanity.

- **Why you do it:**

Well-meaning elementary school teachers told you to “believe in yourself”.

- **Your punishment in Hell will be:**


You'll be broken on the wheel.

- **Associated symbols & suchlike:**

Pride is linked with the horse and colour violet.

# Integrated Waste Management

\$841,000 or 22% saved

 2005/2006 Council budget and service plan – Urban Services

4. Budget

4.1 Unit budget breakdown

Waste Management	2005/2006 Budget Bid (\$000)	2004/2005 Original Budget (\$000)	Variance (\$000)	2004/2005 forecast (\$000)
Total Income	245.0	120.0	125.0	120.0
• Govt grants	0.0	0.0	0.0	0.0
• Fees and income	0.0	0.0	0.0	0.0
• Other	245.0	120.0	125.0	120.0
Total Expenditure	(3,133.8)	(3,974.9)	841.1	(3,974.9)
• Labour	0.0	0.0	0.0	0.0
• Non-labour	(3,133.8)	(3,974.9)	841.1	(3,974.9)
Net Operating Surplus / (Deficit)	(2,888.8)	(3,854.9)	966.1	(3,854.9)
Capital Expenditure	0.0	0.0	0.0	0.0
Full Time Equivalent (FTE)	0.0	0.0	0.0	0.0

# Metro Savings

If every Council had similar savings it would amount to  
\$25 million.

# Gluttony and Lust

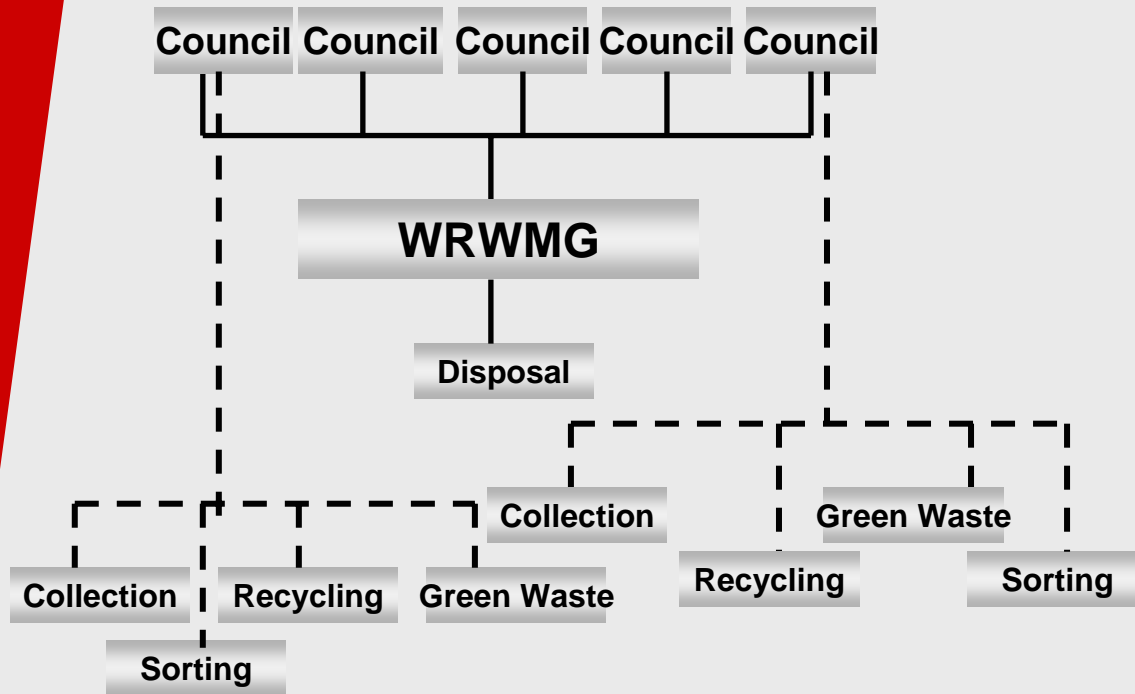
**Gluttony** – the third deadly sin and **Lust** – the fourth deadly sin have nothing whatsoever to do with waste management

# Process Stream



# The Current Scenario

Each Council does its own thing

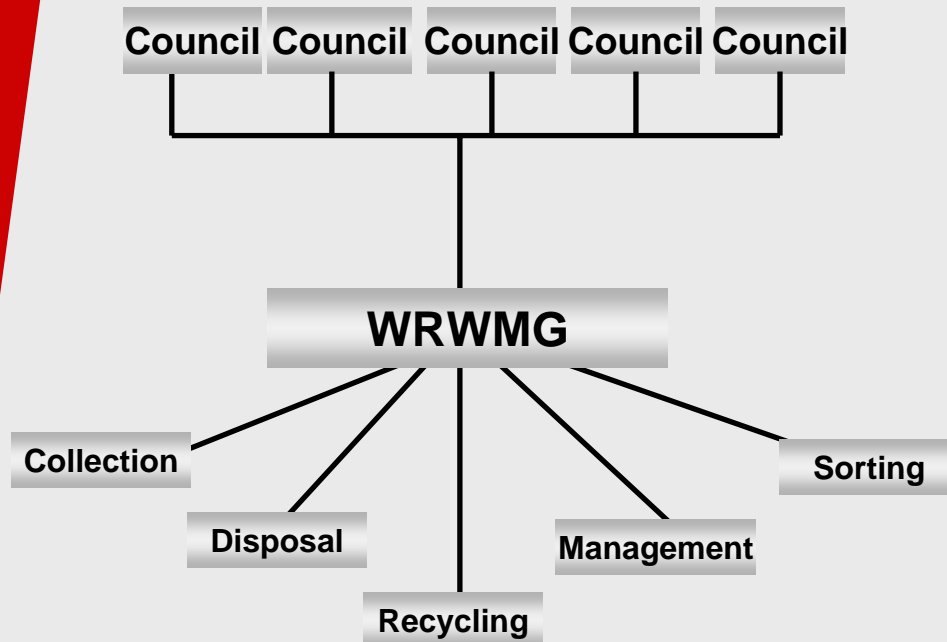


- Multiple contracts;
- Direct responsibility for multiple contract risks;
- Scaled opportunities that reflect Council's size;
- Limiting services that may not be cost warranted under a single Council; and
- Reduced opportunities for lowering waste cost.



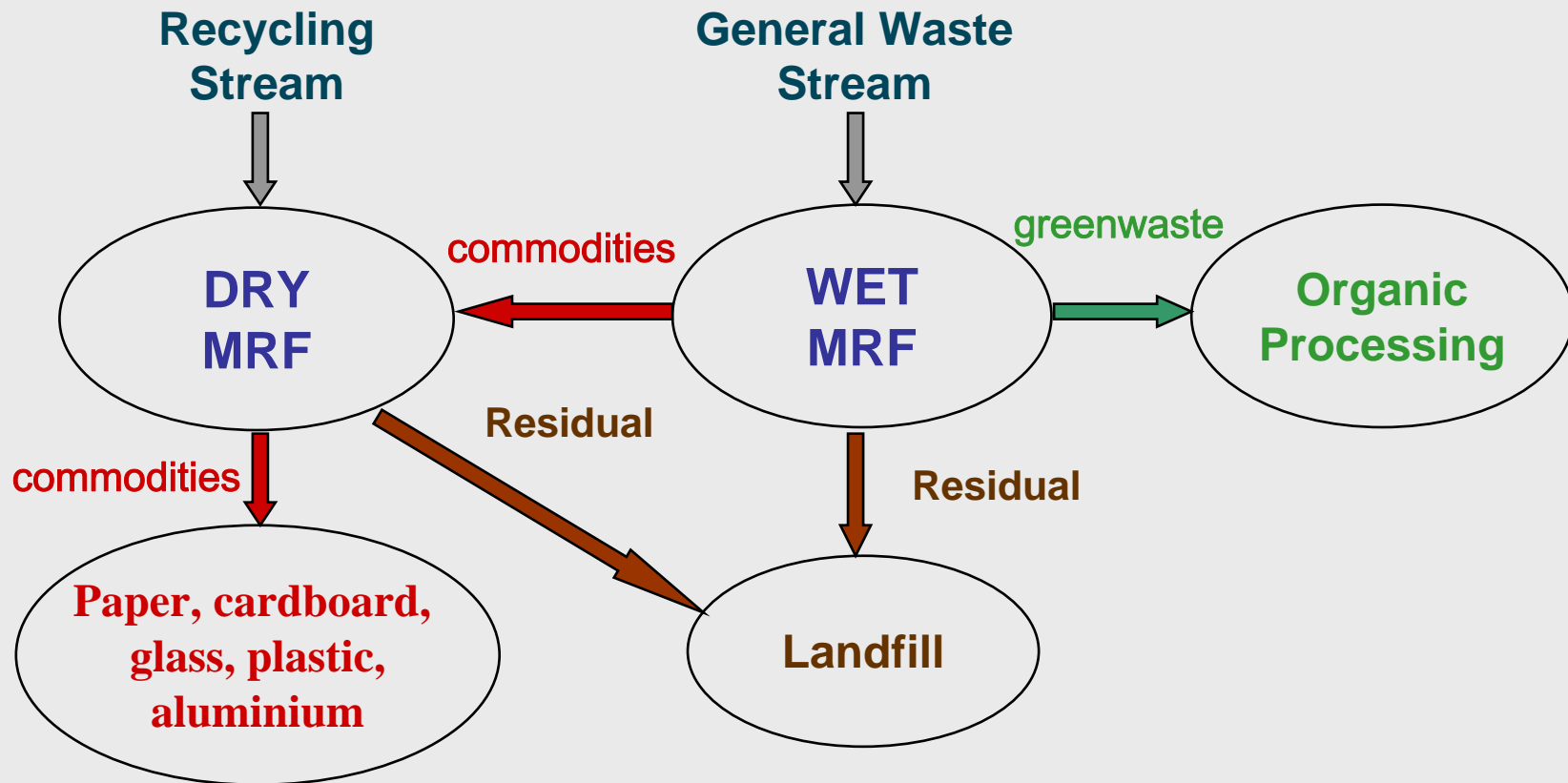
# Integrated Waste Management

A  
Corporate  
Solution



- Reduced waste costs;
- Reduce administration costs;
- One contract;
- Out-sourced risk, improved internal control;
- Easily auditable system; and
- Opportunities for further waste cost reduction.

# Regional Sorting Tender



# How can the system work?

The IWMS process would be rolled out as follows:

- Management of waste contracts centralised under Region;
- Single Call Centre developed;
- As existing contracts draw to an end, regional (or sub-regional) contracts are implemented;
- Regional contracts developed specifically to meet each Council's requirements;
- Risk transferred to the Region; and
- Loop of continued improvement implemented.

# Case Studies

- A major telecommunications company reduced waste costs by 70% over three years
- A supermarket chain recorded a reduction of \$1.5M in annual waste costs after a 18 month period
- A multinational bank has reduce waste costs by 60% in the first year of operations.
- A car manufacturer saved \$1M a year by rationalising the number of waste service providers at one plant.
- A major postage service has saved in the first year of operation 41.7% off its original waste management costs.

# The Final Tally - a mixed bag of lollies

- Collection – 2 out of 9
- Dry MRF – 6 out of 9
- Wet MRF – maybe 8 or 9 out of 9

But opt ins in the future