

Aged care services (Chapter 13)

Under embargo until 1.00am on Thursday, 31 January 2008

For personal use only. Third parties should not be approached until the embargo is lifted.

AGED CARE SERVICES (CHAPTER 13)

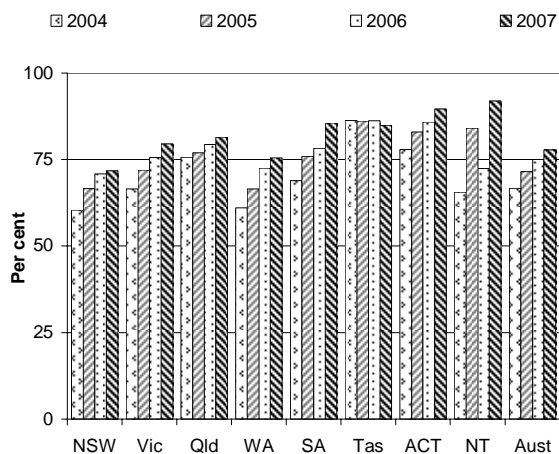
- This chapter reports on government funded residential and community based services for frail older people. The main services are: assessment services; residential services; and community care services.
- Total government expenditure reported on aged care services in 2006-07 was \$8.4 billion. The largest expenditure category was residential care services with \$5.8 billion (69.0 per cent), followed by community care services with \$2.5 billion and assessment services with \$61.5 million. In community care services, the largest expenditure category was Home and Community Care (HACC) services with \$1.5 billion. The Australian Government contributed \$928.4 million to HACC services, with the states and territories contributing \$595.7 million. The Community Aged Care Program (CACP) is funded by the Australian Government, which spent \$404.9 million on the program in 2006-07 (pp. 13.12-17).
- Nationally, there were 167 070 places (excluding flexible care) in residential care facilities (72 647 in high care services, 14 420 in low care services and 80 003 in services providing a mixture of high and low care) at June 2007 (p. 13.19). There were 37 747 operational CACP places at 30 June 2007 and at least 800 505 HACC clients in 2006-07 (p. 13.24).

Objectives of aged care services

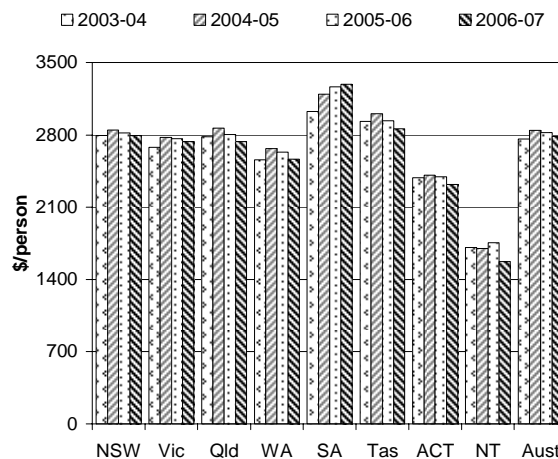
The aged care system aims to promote the wellbeing and independence of frail older people and their carers through the funding and delivery of care services that are accessible, appropriate to needs, high quality and efficient.

Selection of results

Proportion of residents who changed from low care to high care and remained in the same aged care service, June^a (p. 13.49)

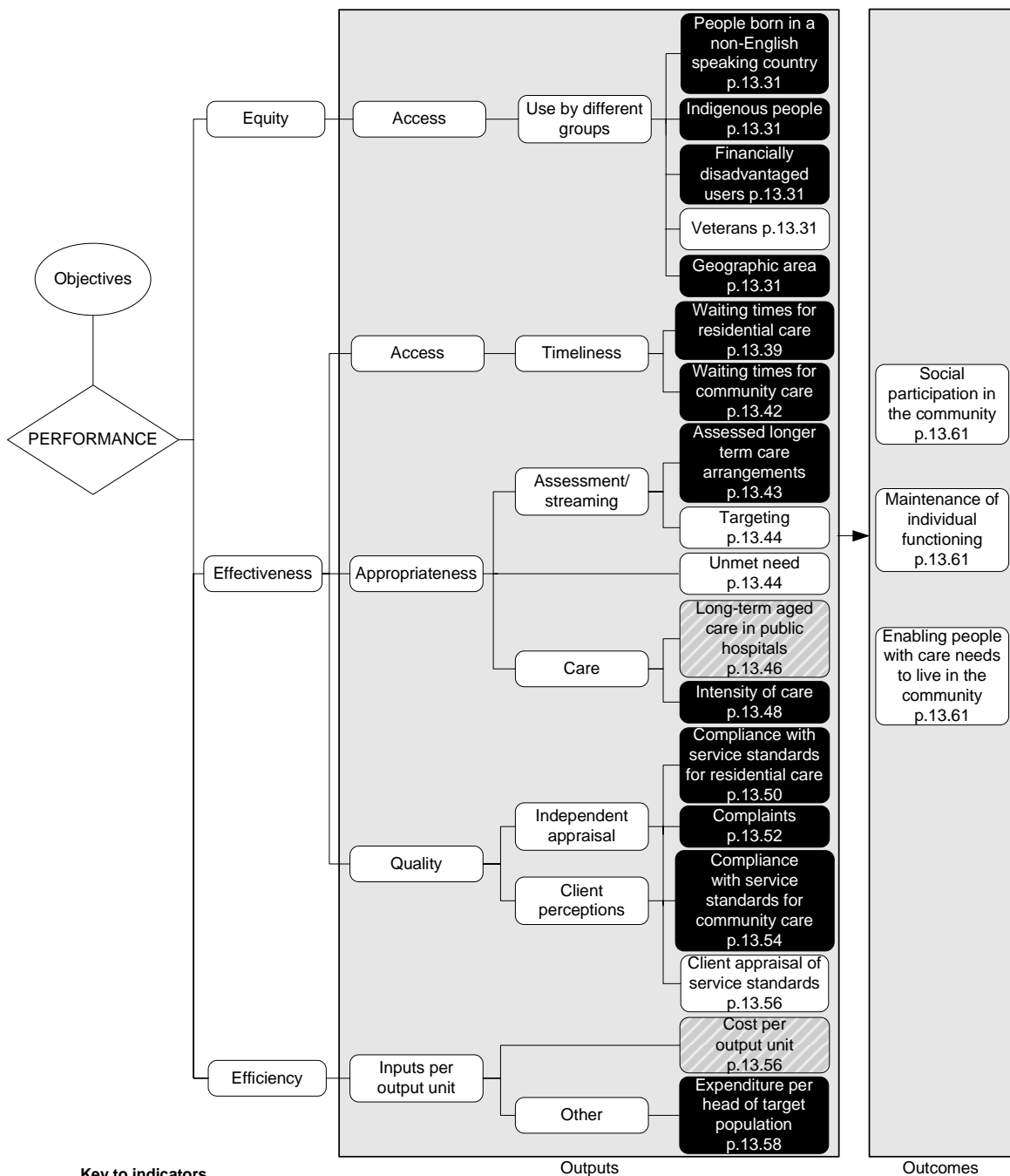


Australian Government (DoHA and DVA) real expenditure on residential services per person aged 70 years or over plus Indigenous people aged 50–69 years (2006-07 dollars)^a (p. 13.59)



^a Data and caveats for these figures are available electronically on the CD-ROM enclosed with the Report and from the website for the Review of Government Service Provision (<http://www.pc.gov.au/gsp/reports/rogs/2008>). Data may be subject to revision. The most recent data will be available on the Review website.

Performance indicators for aged care services (figure 13.12, p. 13.30)



Key to indicators

- Text** Data for these indicators comparable, subject to caveats to each chart or table
- Text** Data for these indicators not complete or not directly comparable
- Text** These indicators yet to be developed or data not collected for this Report: chapter contains explanatory text

Developments in reporting since the 2007 Report

A number of additions and improvements have been made to the chapter this year, including:

- reporting for the first time age specific approval rates for aged care services
- inclusion of two additional categories of experimental expenditure data, for state and territory capital expenditure on residential aged care and additional state and territory expenditure on HACC services
- inclusion for the first time of expenditure data in relation to Multi-Purpose Services, Transition Care Program and Indigenous specific services
- reporting for the first time the indicator 'long term aged care in public hospitals'
- revision and improvement of the indicator 'waiting times for residential care'.

[END]

Background information:	Lawrence McDonald, Head of Secretariat	03 9653 2178/0421 584 905
Other information:	Clair Angel, Media and Publications	02 6240 3239/0417 665 443

Please do not approach other parties for comment before Thursday 31 January 2008.

Media copies of this report are available from Clair Angel on 02 6240 3239.

Hard copies of this publication are available from Pirion/J.S. McMillan (ph: 02 9795 1200 or email custserv@jsmcmillan.com.au). The report will be available via the Internet at <http://www.pc.gov.au/> on the morning of Thursday 31 January 2008.

Tables with an 'A' suffix (eg table 13A.5) are in the attachments on the CD-ROM or on the Review website.