

Under embargo until 1.00am on Thursday, 31 January 2008

For personal use only. Third parties should not be approached until the embargo is lifted.

## SERVICES FOR PEOPLE WITH A DISABILITY (CHAPTER 14)

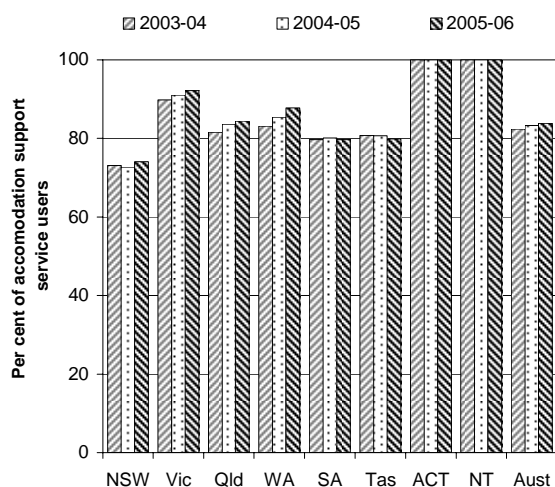
- The focus of this chapter is on Commonwealth State/Territory Disability Agreement (CSTDA) funded services for people with a disability. This Agreement forms the basis for the provision and funding of services for people with a disability, where the person's disability manifests before the age of 65 years and for which they require ongoing or long term episodic support.
- Total government expenditure on CSTDA services was \$4.3 billion in 2006-07, this was a real increase of 6.7 per cent on the expenditure in 2005-06 (\$4.1 billion) (p. 14.9). Of all CSTDA funding in 2006-07, 74.2 per cent came from State and Territory governments and 25.8 per cent came from the Australian Government (p. 14.9).
- The estimated number of people aged under 65 years in Australia with a profound or severe core activity limitation was 706 608 in 2005-06 (table 14A.1). Of these people, 29.1 per cent used a service provided under the CSTDA (p. 14.12).

### Objectives of specialist disability services

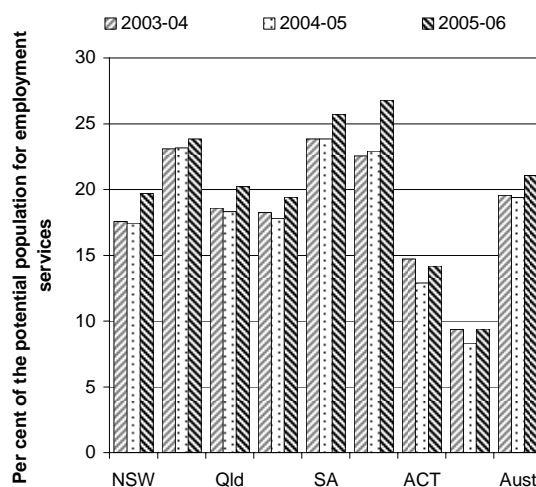
- The major objective of CSTDA funded services for people with a disability is to enhance the quality of life of people with a disability by assisting them to live as valued and participating members of the community.

### Selection of results

Users of community accommodation and care services as a proportion of all accommodation support service users<sup>a</sup>  
(p. 14.36)

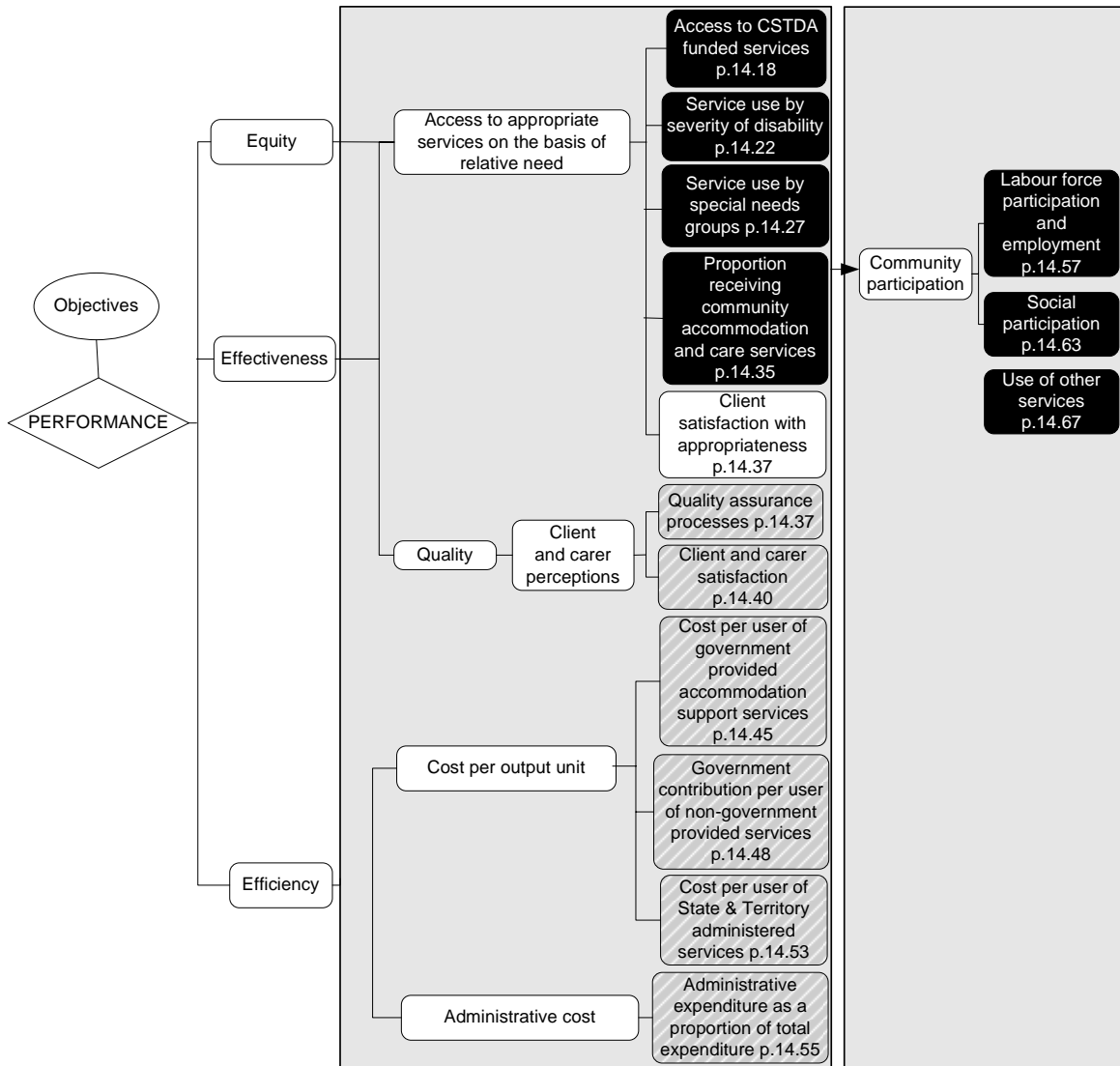


Users of employment services as a proportion of the estimated potential population for employment services<sup>a</sup>  
(p. 14.20)



<sup>a</sup> Data and caveats for these figures are available electronically on the CD-ROM enclosed with the Report and from the website for the Review of Government Service Provision (<http://www.pc.gov.au/gsp/reports/rogs/2008>). Data may be subject to revision. The most recent data will be available on the Review website.

Performance indicators for specialist disability services (figure 14.9, p. 14.16)



Key to indicators

**Text** Data for these indicators comparable, subject to caveats to each chart or table

**Text** Data for these indicators not complete or not directly comparable

**Text** These indicators yet to be developed or data not collected for this Report: chapter contains explanatory text

## Developments in reporting since the 2007 Report

- Inclusion of jurisdictional data on people with a disability aged 0–49 years in residential aged care.
- Inclusion of a new section on informal carers that reports data on the age distribution of carers of CSTDA service users by geographic location, and the impact that the primary caring role has on informal carer's labour force participation.
- Inclusion of data on the proportion of people with a disability who had difficulty accessing government and other services as a result of their disability.

[END]

---

**Background information:** Lawrence McDonald, Head of Secretariat 03 9653 2178/0421 584 905

**Other information:** Clair Angel, Media and Publications 02 6240 3239/0417 665 443

**Please do not approach other parties for comment before Thursday 31 January 2008.**

*Media copies of this report are available from Clair Angel on 02 6240 3239.*

*Hard copies of this publication are available from Pirion/J.S. McMillan (ph: 02 9795 1200 or email [custserv@jismcmillan.com.au](mailto:custserv@jismcmillan.com.au)). The report will be available via the Internet at <http://www.pc.gov.au/> on the morning of Thursday 31 January 2008.*

*Tables with an 'A' suffix (eg table 14A.5) are in the attachments on the CD-ROM or on the Review website.*