

Under embargo until 1.00am on Thursday, 31 January 2008

For personal use only. Third parties should not be approached until the embargo is lifted.

SUPPORTED ACCOMMODATION AND ASSISTANCE SERVICES
(CHAPTER 15)

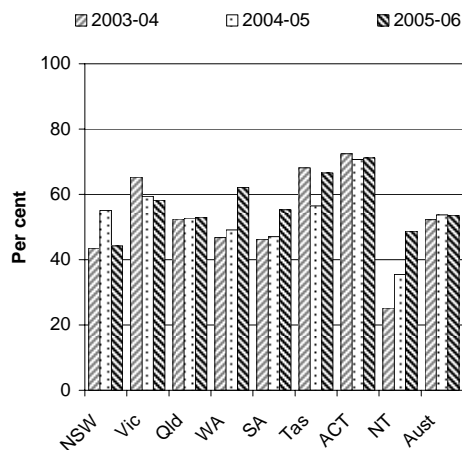
- This chapter reports on the performance of governments in providing child protection, out-of-home care, juvenile justice and supported accommodation and assistance services. This fact sheet focuses on the performance of jurisdictions providing services through the Supported Accommodation and Assistance Program (SAAP).
- Total recurrent funding of SAAP services was approximately \$356.1 million in 2006-07, of which the Australian Government contributed 51.1 per cent and the State and Territory governments contributed 48.9 per cent. An additional \$0.5 million was provided for Australian Government administered national research and evaluation projects (p. 15.56).

Objectives of supported accommodation and assistance services

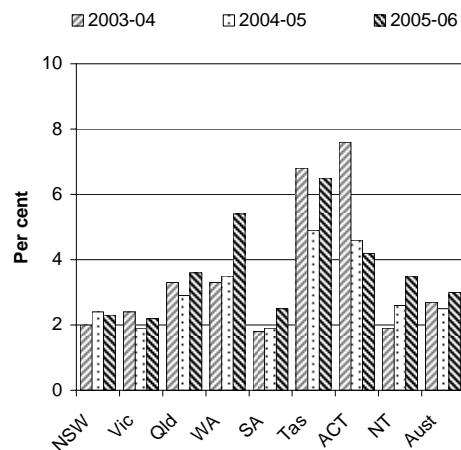
- Supported accommodation and assistance services aim to assist people who are homeless or at imminent risk of becoming homeless as a result of a crisis, including women and children escaping domestic violence.

Selection of results

Turn-away of adults and unaccompanied children as the proportion of people requiring new SAAP accommodation^a
(p. 15.62)

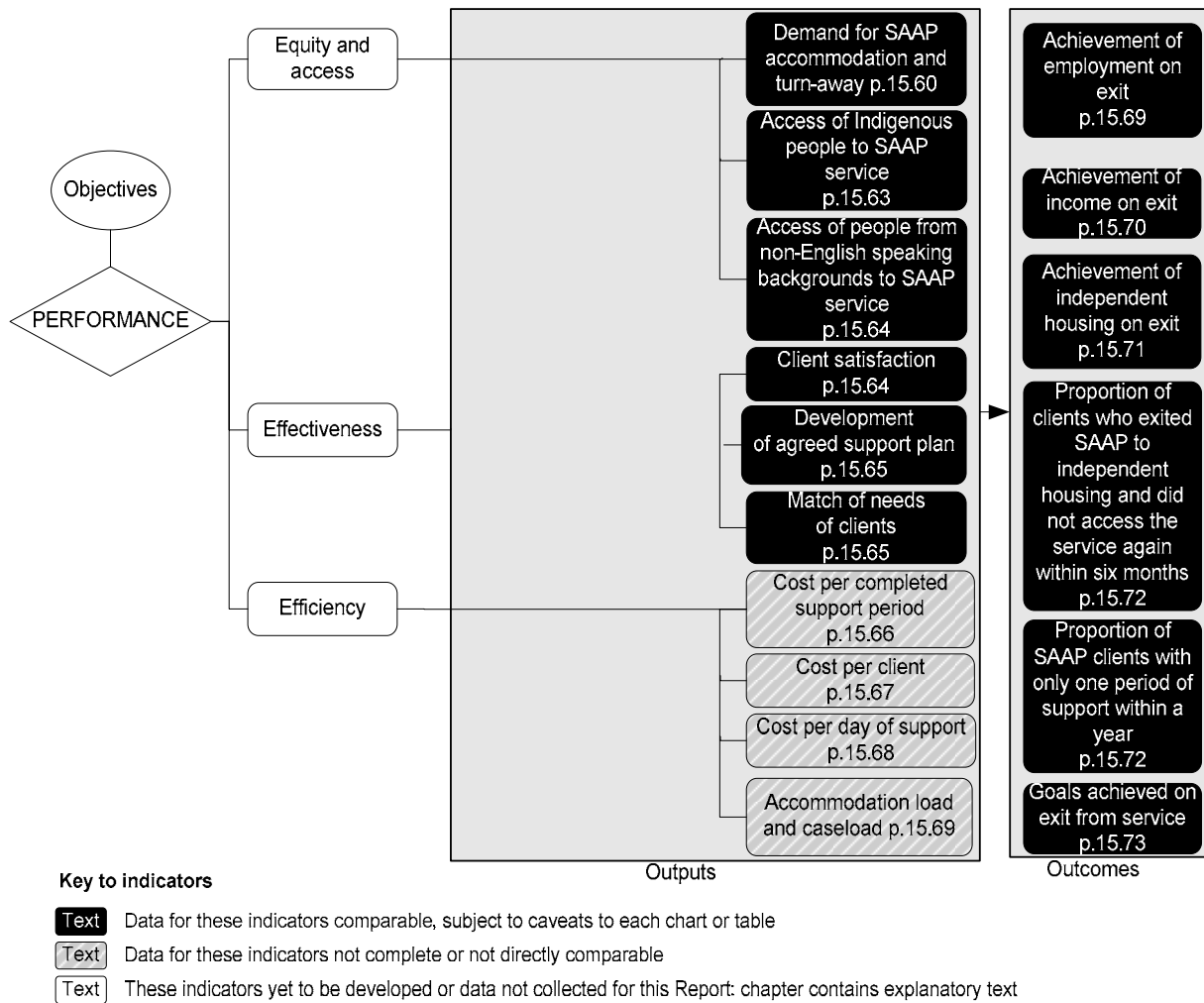


Turn-away of adults and unaccompanied children as the proportion of total demand for SAAP accommodation^a
(p. 15.63)



^a Data and caveats for these figures are available electronically on the CD-ROM enclosed with the Report and from the website for the Review of Government Service Provision (<http://www.pc.gov.au/gsp/reports/rogs/2008>). Data may be subject to revision. The most recent data will be available on the Review website.

Performance indicators for SAAP services (figure 15.17, p. 15.59)



Developments in reporting since the 2007 Report

- There have been no new developments in reporting on SAAP services since the 2007 Report.
- Unfortunately the majority of SAAP data for 2006-07 were not available for the 2008 Report. Financial data for 2006-07 are reported, and the 2005-06 demand for SAAP accommodation and turn-away updates the 2004-05 data provided in the 2007 Report. All other data for 2005-06 have been revised from the preliminary data provided in the 2007 Report.

[END]

Background information: Lawrence McDonald, Head of Secretariat 03 9653 2178/0421 584 905

Other information: Clair Angel, Media and Publications 02 6240 3239/0417 665 443

Please do not approach other parties for comment before Thursday 31 January 2008.

Media copies of this report are available from Clair Angel on 02 6240 3239.

Hard copies of this publication are available from Pirion/J.S. McMillan (ph: 02 9795 1200 or email custserv@jismcmillan.com.au). The report will be available via the Internet at <http://www.pc.gov.au/> on the morning of Thursday 31 January 2008.

Tables with an 'A' suffix (eg table 15A.5) are in the attachments on the CD-ROM or on the Review website.