

Under embargo until 1.00am on Friday, 30 January 2009

For personal use only. Third parties should not be approached until the embargo is lifted.

## SERVICES FOR PEOPLE WITH A DISABILITY (CHAPTER 14)

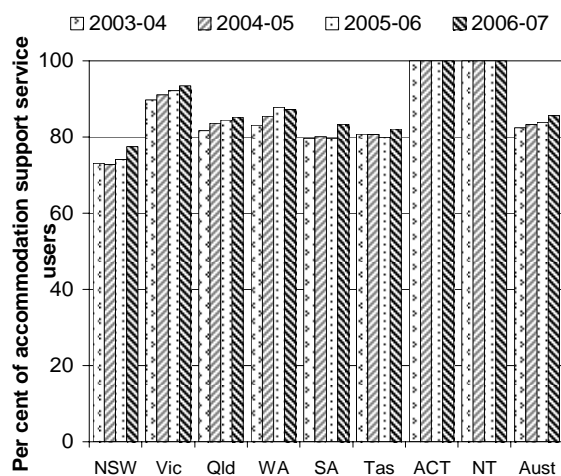
- The focus of this chapter is on Commonwealth State/Territory Disability Agreement (CSTDA) funded services for people with a disability. This Agreement forms the basis for the provision and funding of services for people with a disability, where the person's disability manifests before the age of 65 years and for which they require ongoing or long term episodic support.
- Total government expenditure on CSTDA services was \$4.7 billion in 2007-08, a real increase of 4.3 per cent on the expenditure in 2006-07 (\$4.5 billion) (p. 14.11). Of all CSTDA funding in 2007-08, 72.7 per cent came from State and Territory governments and 27.3 per cent came from the Australian Government (p. 14.11).
- The estimated number of people aged under 65 years in Australia with a profound or severe core activity limitation was 721 716 in 2006-07 (table 14A.3). Of these people, 30.5 per cent used a service provided under the CSTDA (p. 14.13).

### Objectives of specialist disability services

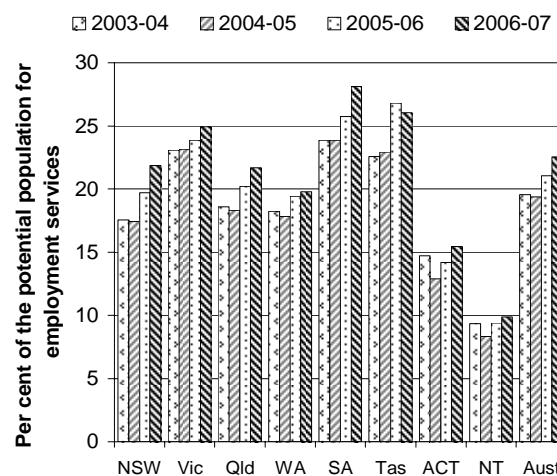
- The major objective of CSTDA funded services for people with a disability is to enhance the quality of life experienced by people with a disability by assisting them to live as valued and participating members of the community.

### Selection of results

Users of community accommodation and care services as a proportion of all accommodation support service users<sup>a</sup>  
(p. 14.49)

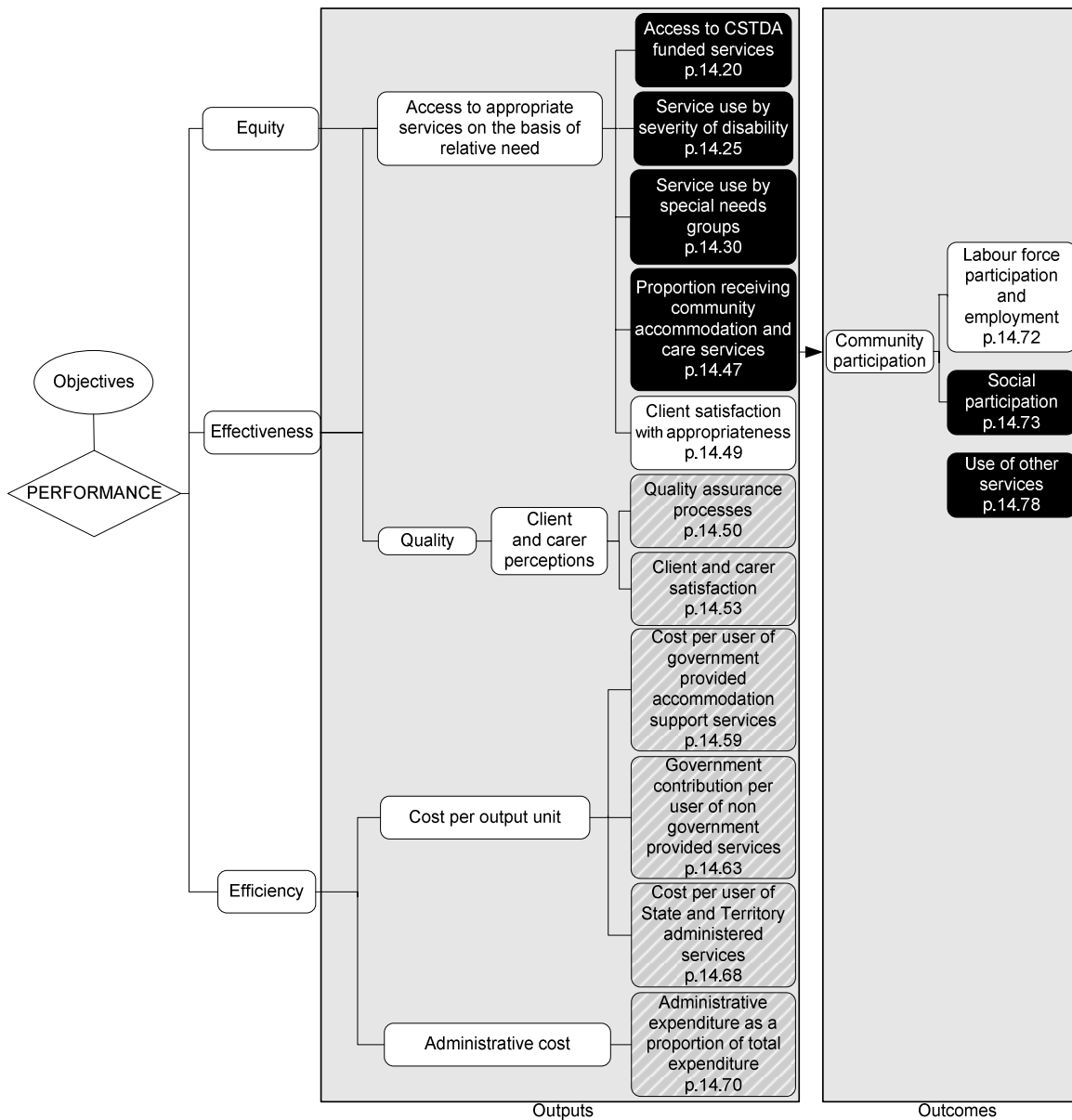


Users of employment services as a proportion of the estimated potential population for employment services<sup>a</sup>  
(p. 14.25)



<sup>a</sup> Data and caveats for these figures are available electronically on the CD-ROM enclosed with the Report and from the website for the Review of Government Service Provision ([www.pc.gov.au/gsp/reports/rogs/2009](http://www.pc.gov.au/gsp/reports/rogs/2009)). Data may be subject to revision. The most recent data will be available on the Review website.

# Performance indicators for specialist disability services (figure 14.9, p. 14.18)



## Key to indicators

- Text** Data for these indicators comparable, subject to caveats to each chart or table
- Text** Data for these indicators not complete or not directly comparable
- Text** These indicators yet to be developed or data not collected for this Report: chapter contains explanatory text

## Developments in reporting since the 2008 Report

- Inclusion of additional measures for the 'Service use by special needs groups' indicator on access to community support, community access and respite services, by country of birth and geographic location.
- Inclusion of experimental estimates for the 'Service use by special needs groups' measures that are derived using 'potential populations' to account for differences in the need for services across the relevant groups.
- Reporting of data on the participation of people with profound and severe core activity limitations in various social/community activities, by their perceived level of difficulty with transport.
- Reporting of data on access to public housing, by 'core activity need for assistance' status.
- Reporting of data on access to health services, by disability status.

[END]

---

**Background information:** Lawrence McDonald, Head of Secretariat 03 9653 2178/0421 584 905

**Other information:** Clair Angel, Media and Publications 02 6240 3239/0417 665 443

**Please do not approach other parties for comment before Friday 30 January 2009.**

*Media copies of this report are available from Clair Angel on 02 6240 3239.*

*Hard copies of this publication are available from McMillanprint (ph: 02 9795 1200 or email [custserv@mcmillanprint.com.au](mailto:custserv@mcmillanprint.com.au)). The report will be available via the Internet at [www.pc.gov.au](http://www.pc.gov.au) on the morning of Friday 30 January 2009.*

*Tables with an 'A' suffix (eg table 14A.5) are in the attachments on the CD-ROM or on the Review website.*