
Errata — Report on Government Services 2010

The following amendment was made to the 2010 Report since it was released in January 2010.

Chapter and attachment 8 — Corrective services

Data provided for ACT expenditure have been revised. Total overall recurrent expenditure was underestimated by \$8 million across both prisons and community corrections. The associated line items were adjusted accordingly: net operating expenditure and capital costs for prisons increased; prison transport and escort services decreased; community corrections net operating expenditure increased; community corrections capital costs decreased. The revisions affect the following:

- chapter text on page 8.4 relating to the national ‘net operating expenditure on corrective services including depreciation’ — reflects the increase in expenditure for the ACT
- chapter text and figure 8.1 on page 8.4 relating to ‘Real net operating expenditure on prisons and community corrections plus depreciation, per head of population per year (2008-09 dollars)’ — reflects the increase in expenditure of \$23 per head of the population per year for the ACT for 2008-09 and the associated Australian figure
- chapter text on page 8.23 and associated figure 8.11 on page 8.24 ‘Total cost per prisoner per day, 2008-09’ — reflects the increase in expenditure for the ACT of \$110 per prisoner per day and the associated Australian figure
- figure 8.12 on page 8.24 relating to ‘Real net operating expenditure per prisoner per day (2008-09 dollars)’ — reflects the increase in expenditure for the ACT of \$110 per prisoner per day and the associated Australian figure for 2008-09
- figure 8.13 on page 8.25 relating to ‘Real net operating expenditure per offender per day (2008-09 dollars)’ — reflects the increase in expenditure for the ACT of \$1 per offender per day and the associated Australian figure for 2008-09
- attachment table 8A.6 ‘Total recurrent expenditure on prisons and community corrections, 2008-09’ — reflects the revised expenditure items for the ACT of and the associated Australian figures

-
- attachment table 8A.7 ‘Net recurrent expenditure, per prisoner and offender, 2008-09’ — reflects the revised expenditure items for the ACT and the associated Australian figures
 - attachment table 8A.8 ‘Real net operating expenditure on prisons 2008-09 \$’000)’ — reflects the increase in expenditure for the ACT of \$7 473 000 and the associated Australian figure
 - attachment table 8A.9 ‘Real net operating expenditure, per prisoner per day (2008-09 dollars)’ — reflects the increase in expenditure for the ACT of \$110 per prisoner per day and the associated Australian figure
 - attachment table 8A.10 ‘Real net operating expenditure on community corrections (2008-09 \$’000)’ — reflects the increase in expenditure for the ACT of \$573 and the associated Australian figure for 2008-09
 - attachment table 8A.11 ‘Real net operating expenditure, per offender per day (2008-09 dollars)’ — reflects the increase in expenditure for the ACT of \$1 per offender per day and the associated Australian figure for 2008-09
 - attachment table 8A.12 ‘Real net operating expenditure on prisons and community corrections plus depreciation (2008-09 \$’000)’ — reflects the increase in expenditure for the ACT of \$8046 and the associated Australian figure for 2008-09
 - attachment table 8A.13 ‘Real net operating expenditure on prisons and community corrections plus depreciation, per head of population per year (2008-09 dollars)’ — reflects the increase in expenditure for the ACT of \$23 per head of population per year and the associated Australian figure for 2008-09
 - attachment table 8A.63 ‘Descriptors, prisons’— reflects the revised expenditure items for the ACT for 2008-09
 - attachment table 8A.67 ‘Efficiency, prison and periodic detention’— reflects the revised expenditure items for the ACT for 2008-09
 - attachment table 8A.68 ‘Descriptors, community corrections’— reflects the revised expenditure items for the ACT for 2008-09
 - attachment table 8A.70 ‘Efficiency, community corrections’— reflects the revised expenditure items for the ACT for 2008-09.

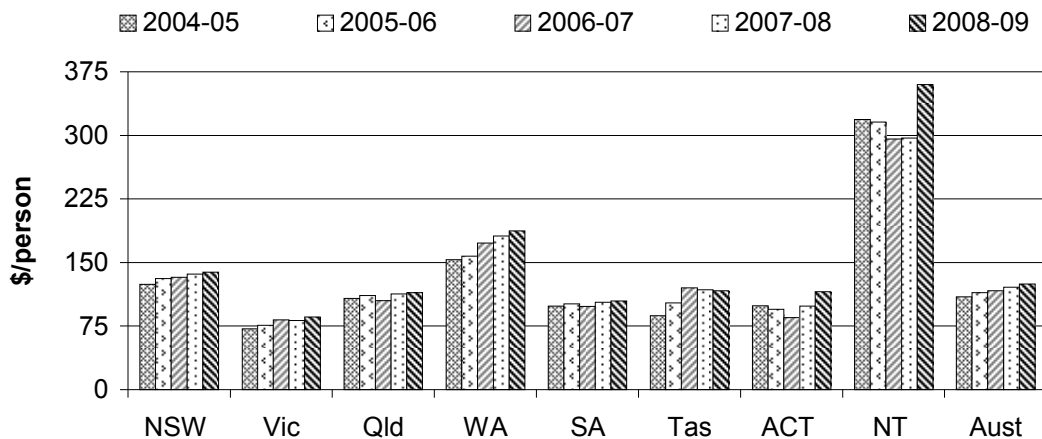
The revised chapter text, figures and attachment tables are reproduced below.

Revised text and figure on page 8.4

As described in the Justice preface, recurrent expenditure relates to annual service costs and excludes payroll tax. For consistency with Justice preface reporting, the annual expenditure on corrective services presented in figure 8.1 combines prisons and community corrections net operating expenditure plus depreciation, but excludes transport/escort services, payroll tax, and capital costs of debt servicing fees and user cost of capital. Net operating expenditure on corrective services including depreciation was \$2.7 billion in 2008-09 — an increase of 5.3 per cent over the previous year (table 8A.12).

National expenditure per person in the population, based on net operating expenditure on prisons and community corrections plus depreciation, increased in real terms over the last five years, from \$110 in 2004-05 to \$125 in 2008-09 (figure 8.1).

Figure 8.1 Real net operating expenditure on prisons and community corrections plus depreciation, per head of population per year (2008-09 dollars)^{a, b, c}



^a Includes operating expenditure on prisons and community corrections (net of operating revenues) and depreciation; excludes payroll tax, transport/escort services costs where reported separately from prison expenditure, debt servicing fees, and user cost of capital. ^b Per person cost is calculated using total population (all ages). ^c Real expenditure based on the ABS gross domestic product price deflator (2008-09 = 100) (table AA.26).

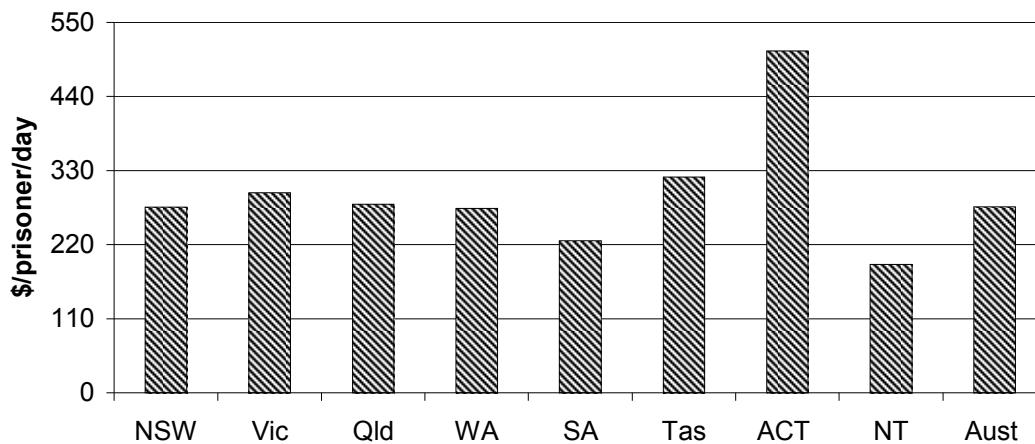
Source: State and Territory governments (unpublished); table 8A.13; table AA.2.

Revised text and figure on page 8.23

Nationally in 2008-09, the total cost per prisoner per day, comprising net operating expenditure, depreciation, debt servicing fees and user cost of capital, was \$276 (figure 8.11).

Revised figures on pages 8.24 – 8.25

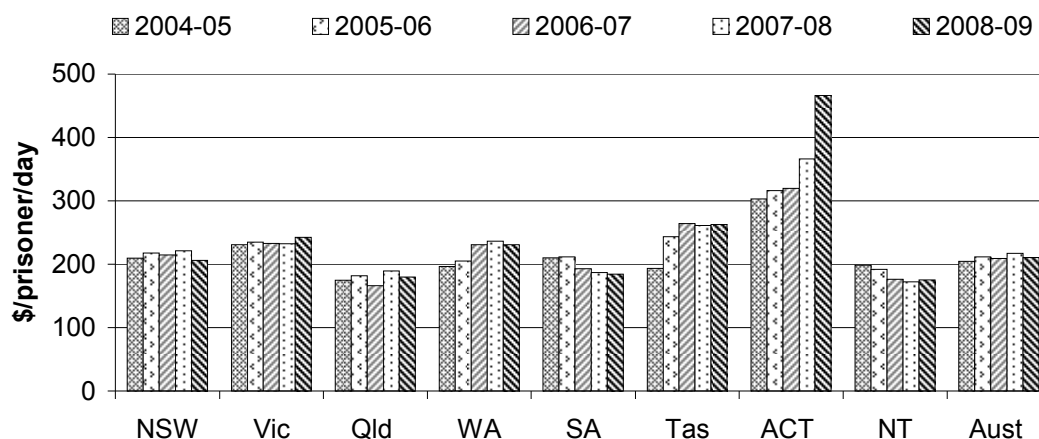
Figure 8.11 Total cost per prisoner per day, 2008-09^a



^a Total cost per prisoner per day is the combined operating expenditure and capital costs per prisoner per day, net of operating revenues and excluding payroll tax. Capital costs include the user cost of capital (including land), depreciation and debt servicing fees where applicable. Total cost excludes expenditure on transport and escort services where these are reported separately by jurisdictions.

Source: State and Territory governments (unpublished); table 8A.7.

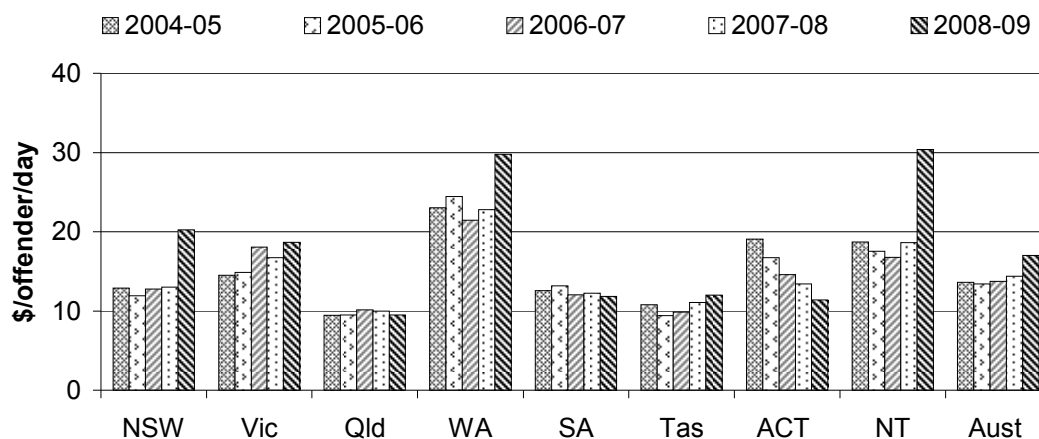
Figure 8.12 Real net operating expenditure per prisoner per day (2008-09 dollars)^{a, b}



^a Based on operating expenditure on prisons, net of operating revenues, and excluding payroll tax, capital costs, and transport and escort services expenditure where this is reported separately by jurisdictions. ^b Real expenditure based on the ABS gross domestic product price deflator (2008-09 = 100) (table AA.26).

Source: State and Territory governments (unpublished); table 8A.9.

Figure 8.13 Real net operating expenditure per offender per day (2008-09 dollars)^{a, b}



^a Based on operating expenditure on community corrections, net of operating revenues, and excluding payroll tax and capital costs. ^b Real expenditure based on the ABS gross domestic product price deflator (2008-09 = 100) (table AA.26).

Source: State and Territory governments (unpublished); table 8A.11.

Table 8A.6

Table 8A.6

Total recurrent expenditure on prisons and community corrections, 2008-09

	<i>Units</i>	<i>NSW</i>	<i>Vic</i>	<i>Qld</i>	<i>WA</i>	<i>SA</i>	<i>Tas</i>	<i>ACT</i>	<i>NT (a)</i>	<i>Aust (b)</i>
Prisons										
Net operating expenditure (c)										
Open plus periodic detention	\$'000	258 196	34 449	44 809	71 450	13 351	4 225	9 784	na	436 265
Secure	\$'000	515 236	346 581	324 475	266 943	116 925	45 806	21 932	na	1 637 898
All prisons	\$'000	773 432	381 031	369 284	338 393	130 276	50 031	31 717	65 991	2 140 154
Capital costs, all prisons (d)	\$'000	262 591	85 807	206 835	62 937	29 358	11 064	2 819	5 670	667 081
Total net operating expenditure and capital costs (b)	\$'000	1 036 023	466 838	576 119	401 330	159 634	61 095	34 536	71 661	2 807 235
Transport and escort services (c)	\$'000	47 202	9 115	8 379	1 720	2 327	na	2 384	na	71 127
Payroll tax										
Open plus periodic detention	\$'000	9 824	868	861	..	408	148	..	na	12 109
Secure	\$'000	18 956	6 740	6 777	..	3 897	1 464	..	na	37 834
All prisons	\$'000	28 780	7 608	7 638	..	4 305	1 612	..	2 104	52 047
Community corrections										
Net operating expenditure (d)	\$'000	133 921	55 203	50 255	61 187	29 380	5 159	6 672	12 046	353 823
Capital costs (e), (f)	\$'000	13 926	1 140	2 470	2 090	1 584	–	36	153	21 399
Total net operating expenditure and capital costs (b)	\$'000	147 847	56 342	52 725	63 277	30 964	5 159	6 708	12 199	375 222
Payroll tax	\$'000	5 593	1 602	1 663	..	1 047	234	..	372	10 511

(a) NT is unable to disaggregate costs into open and secure custody because each prison operates as a combined entity for financial management purposes.

(b) Totals may not equate precisely to the aggregate of figures from other cells due to rounding of decimal places.

(c) Tasmania and the NT are unable to disaggregate prisoner transport costs from other prison operating costs. ACT is able to disaggregate the cost of transporting prisoners within ACT but the transport costs for ACT prisoners held in NSW prisons are included under ACT's overall operating costs. NSW, Vic, QLD, WA, and SA are able to fully disaggregate or reliably estimate their total prisoner transport costs.

(d) Net operating expenditure excludes payroll tax and is net of operating revenues from ordinary activities.

(e) Capital costs comprise user cost of capital, depreciation expense, and debt service fees where applicable.

(f) Tasmania does not own any community corrections assets over \$5000 in value.

Table 8A.6

Table 8A.6

Total recurrent expenditure on prisons and community corrections, 2008-09

	<i>Units</i>	<i>NSW</i>	<i>Vic</i>	<i>Qld</i>	<i>WA</i>	<i>SA</i>	<i>Tas</i>	<i>ACT</i>	<i>NT (a)</i>	<i>Aust (b)</i>
--	--------------	------------	------------	------------	-----------	-----------	------------	------------	---------------	-----------------

na Not available. .. Not applicable. – Nil or rounded to zero.

Source: State and Territory governments (unpublished).

Table 8A.7

Table 8A.7

Net recurrent expenditure, per prisoner and offender, 2008-09

	<i>Units</i>	<i>NSW</i>	<i>Vic</i>	<i>Qld</i>	<i>WA</i>	<i>SA</i>	<i>Tas</i>	<i>ACT</i>	<i>NT (a)</i>	<i>Aust</i>
Prisons										
Net operating expenditure per prisoner (b)										
Open plus periodic detention	\$/day	187.14	212.13	208.87	171.79	170.01	208.42	368.82	na	191.01
Secure	\$/day	216.85	246.18	176.20	254.36	186.12	268.97	528.82	na	218.12
All prisons	\$/day	205.94	242.65	179.61	230.92	184.33	262.53	466.40	175.41	210.45
Capital costs per prisoner										
User cost of capital (c)	\$/day	53.67	15.90	63.09	34.20	29.32	41.17	15.79	10.64	43.27
Land	\$/day	2.83	2.72	3.76	2.33	6.00	2.53	10.12	0.60	3.12
Other assets	\$/day	50.84	13.18	59.33	31.87	23.31	38.64	5.67	10.05	40.15
Debt servicing fees (d)	\$/day	..	23.70	3.66
Depreciation	\$/day	16.25	15.05	37.51	8.74	12.22	16.89	25.67	4.43	18.67
Total capital cost (e)	\$/day	69.92	54.65	100.60	42.95	41.54	58.06	41.46	15.07	65.60
Total net operating expenditure and capital costs per prisoner per day (e)	\$/day	275.86	297.30	280.21	273.87	225.87	320.59	507.86	190.48	276.05
Community corrections										
Net operating expenditure per offender (b)	\$/day	20.23	18.65	9.51	29.78	11.84	12.00	11.41	30.40	17.00
Capital costs per offender	\$/day	2.10	0.39	0.47	1.02	0.64	–	0.06	0.39	1.03
Total net operating expenditure and capital costs per offender per day (e)	\$/day	22.33	19.04	9.98	30.80	12.48	12.00	11.48	30.78	18.03

(a) NT is unable to disaggregate costs into open and secure custody because each prison operates as a combined entity for financial management purposes.

(b) Net operating expenditure excludes payroll tax and is net of operating revenues from ordinary activities.

(c) Calculated as 8 per cent of the value of government owned assets.

(d) Debt servicing fees are accommodation services fees paid to privately owned prisons, equivalent to the user cost of capital for government owned facilities. This item is only applicable to Victoria.

(e) Totals may not equate precisely to the aggregate of figures from other cells due to rounding of decimal places.

na Not available. .. Not applicable. – Nil or rounded to zero.

Source: State and Territory governments (unpublished).

Table 8A.8

Table 8A.8 **Real net operating expenditure on prisons (2008-09 \$'000) (a), (b)**

	<i>Units</i>	<i>NSW</i>	<i>Vic</i>	<i>Qld</i>	<i>WA</i>	<i>SA</i>	<i>Tas</i>	<i>ACT</i>	<i>NT</i>	<i>Aust (c)</i>
2004-05	\$'000	700 934	303 496	339 803	242 183	115 766	36 755	23 616	55 863	1 818 415
2005-06	\$'000	742 164	312 828	361 692	256 863	119 757	44 750	24 004	55 444	1 917 503
2006-07	\$'000	758 853	344 180	342 379	305 652	118 757	51 564	21 737	53 716	1 996 838
2007-08	\$'000	794 752	354 694	379 794	328 081	126 459	51 392	26 239	54 960	2 116 371
2008-09	\$'000	773 432	381 031	369 284	338 393	130 276	50 031	31 717	65 991	2 140 154

(a) Real net operating expenditure excludes payroll tax and is net of operating revenues from ordinary activities.

(b) Data for previous years have been adjusted by the gross domestic product deflator.

(c) Totals may not equate precisely to the aggregate of figures from other cells due to rounding of decimal places.

Source: State and Territory governments (unpublished).

Table 8A.9 Real net operating expenditure, per prisoner per day (2008-09 dollars) (a), (b), (c)

	NSW	Vic	Qld	WA	SA	Tas	ACT	NT	Aust
2004-05	209.69	231.06	174.58	196.66	209.90	193.24	303.19	198.71	204.49
2005-06	217.78	234.81	181.72	204.84	211.81	243.24	316.39	191.91	211.80
2006-07	214.65	233.02	165.94	231.04	192.85	264.13	319.90	176.34	209.23
2007-08	221.09	232.51	189.37	236.23	186.64	260.99	366.17	172.02	217.19
2008-09	205.94	242.65	179.61	230.92	184.33	262.53	466.40	175.41	210.45

(a) Calculated from net operating expenditure, which excludes payroll tax and is net of operating revenues from ordinary activities.

(b) Data for previous years have been adjusted by the gross domestic product deflator.

(c) ACT figures include all ACT prisoners whether in the ACT or NSW prisons. NSW figures include ACT prisoners held in NSW prisons. Australian figures are calculated so that ACT prisoners held in NSW prisons are not double counted.

Source : State and Territory governments (unpublished).

Table 8A.10

Table 8A.10 **Real net operating expenditure on community corrections (2008-09 \$'000) (a), (b)**

	<i>Units</i>	<i>NSW</i>	<i>Vic</i>	<i>Qld</i>	<i>WA</i>	<i>SA</i>	<i>Tas</i>	<i>ACT</i>	<i>NT</i>	<i>Aust (c)</i>
2004-05	\$'000	83 226	43 540	39 951	46 236	28 529	4 047	8 606	7 355	261 489
2005-06	\$'000	78 459	43 415	41 752	49 296	29 971	3 853	7 203	7 204	261 155
2006-07	\$'000	83 837	48 170	45 340	41 090	27 673	4 287	6 512	7 251	264 160
2007-08	\$'000	85 605	48 315	49 811	44 973	28 655	4 540	6 896	7 840	276 634
2008-09	\$'000	133 921	55 203	50 255	61 187	29 380	5 159	6 672	12 046	353 823

(a) Real net operating expenditure excludes payroll tax and is net of operating revenues from ordinary activities.

(b) Data for previous years have been adjusted by the gross domestic product deflator.

(c) Totals may not equate precisely to the aggregate of figures from other cells due to rounding of decimal places.

Source: State and Territory governments (unpublished).

Table 8A.11

**Table 8A.11 Real net operating expenditure, per offender per day (2008-09 dollars)
(a), (b)**

	NSW	Vic	Qld	WA	SA	Tas	ACT	NT	Aust
2004-05	12.89	14.51	9.47	23.02	12.55	10.80	19.07	18.70	13.63
2005-06	11.90	14.86	9.51	24.44	13.19	9.41	16.72	17.53	13.43
2006-07	12.77	18.06	10.13	21.46	12.04	9.84	14.57	16.78	13.73
2007-08	13.03	16.73	9.98	22.78	12.25	11.08	13.42	18.63	14.38
2008-09	20.23	18.65	9.51	29.78	11.84	12.00	11.41	30.40	17.00

(a) Calculated from net operating expenditure, which excludes payroll tax and is net of operating revenues from ordinary activities.

(b) Data for previous years have been adjusted by the gross domestic product deflator.

Source : State and Territory governments (unpublished).

Table 8A.12

Table 8A.12 **Real net operating expenditure on prisons and community corrections plus depreciation (2008-09 \$'000) (a)**

	<i>Units</i>	<i>NSW</i>	<i>Vic</i>	<i>Qld</i>	<i>WA</i>	<i>SA</i>	<i>Tas</i>	<i>ACT</i>	<i>NT</i>	<i>Aust (b)</i>
2004-05	\$'000	835 708	359 720	423 996	306 505	152 157	42 250	32 521	64 982	2 217 839
2005-06	\$'000	889 541	385 488	448 786	321 016	157 909	50 017	31 474	65 769	2 350 001
2006-07	\$'000	908 553	425 992	433 509	359 743	154 772	59 105	28 581	62 889	2 433 144
2007-08	\$'000	945 217	427 684	477 896	386 568	164 252	58 363	33 641	64 602	2 558 224
2008-09	\$'000	975 238	460 843	498 285	413 215	168 749	58 408	40 155	79 793	2 694 686

(a) This table provides source data for corrective services figures reported in Tables in the Justice preface. For consistency with data provided by other justice agencies, expenditure in Table 8A.12 therefore includes depreciation, which is treated as a capital cost in other Tables of the Corrective services chapter. Figures refer to net operating expenditure (which excludes payroll tax and is net of operating revenues from ordinary activities) for prisons and community corrections combined plus depreciation, but exclude the two other capital cost items (user cost of capital and debt servicing fees). These figures also exclude transport and escort service costs where they are reported separately by jurisdictions.

(b) Totals may not equate precisely to the aggregate of figures from other cells due to rounding of decimal places.

Source: State and Territory governments (unpublished).

Table 8A.13

Table 8A.13 Real net operating expenditure on prisons and community corrections plus depreciation, per head of population per year (2008-09 dollars) (a), (b)

	NSW	Vic	Qld	WA	SA	Tas	ACT	NT	Aust
2004-05	124.20	71.74	107.45	153.35	98.45	87.18	99.10	318.88	109.51
2005-06	131.08	75.80	110.98	157.57	101.26	102.39	94.69	315.58	114.39
2006-07	132.54	82.47	104.91	172.87	98.22	120.21	84.95	295.88	116.69
2007-08	136.45	81.52	113.02	181.42	103.18	117.72	98.71	296.94	120.78
2008-09	138.50	85.90	114.56	187.48	104.68	116.75	115.44	359.94	124.50

(a) Calculated from net real operating expenditure plus depreciation figures reported in Table 8A.12 and the total resident population (all ages) reported in Table AA.2.

(b) Data for previous years have been adjusted by the gross domestic product deflator.

Source : State and Territory governments (unpublished); Table AA.2

Table 8A.63

Australian Capital Territory

Table 8A.63 Descriptors, prisons

	2004-05	2005-06	2006-07	2007-08	2008-09
Average daily prison population (a)					
Total — all prisons	185	191	170	180	171
Male, Indigenous, open prison	6	3	9	6	5
Male, non-Indigenous, open prison	60	38	63	59	47
Male, unknown, open prison	21	41	—	—	—
Female, Indigenous, open prison	—	—	0.3	0.4	1
Female, non-Indigenous, open prison	4	2	4	6	5
Female, unknown, open prison	2	5	0.2	—	—
Male, Indigenous, secure prison	8	11	11	12	17
Male, non-Indigenous, secure prison	77	69	77	88	87
Male, unknown, secure prison	5	17	—	—	—
Female, Indigenous, secure prison	0.1	1	0.4	2	2
Female, non-Indigenous, secure prison	3	3	6	6	6
Female, unknown, secure prison	—	0.3	—	—	—
Total - male/female					
Male prisoners, all prisons	176	179	159	165	157
Female prisoners, all prisons	8	11	10	15	14
Total — Indigenous/non-Indigenous					
Indigenous prisoners, all prisons	13	15	21	21	25
Non-Indigenous prisoners, all prisons	143	112	149	160	146
Unknown, all prisons	28	64	0.2	—	—
Total — open/secure					
Open prisoners	92	90	76	72	57
Secure prisoners	93	101	94	108	114
Privately operated prisons					
Indigenous prisoners
Non-Indigenous prisoners
Unknown
Total prisoners in privately operated prisons					
Crude imprisonment rate (b)
Prisoners/100 000					
Male prisoners/100 000	73.5	74.6	65.4	68.3	63.4
Female prisoners/100 000	143.6	143.2	124.9	127.5	117.9
Indigenous prisoners/100 000	6.4	8.6	7.9	11.0	10.5
Non-Indigenous prisoners/100 000	577.8	607.8	830.7	803.8	961.2
Number of facilities (c)					
Government operated prisons	2	2	2	2	1
Privately operated prisons	—	—	—	—	—
Government operated community custodial facilities	—	—	—	—	—

Table 8A.63

Australian Capital Territory

Table 8A.63 Descriptors, prisons

	2004-05	2005-06	2006-07	2007-08	2008-09
Privately operated community custodial facilities
24-hour court cell centres	-	-	-	-	-
Total facilities (excluding detention centres)	2	2	2	2	1
Prison design capacity (d)					
Open prisons	35
Secure prisons	118
Total — all prisons	99	99	99	99	153
Recurrent expenditure (2008-09 \$'000) (e)					
Operating expenditure, all prisons	23 616	24 004	21 737	26 239	31 717
Operating revenues, all prisons	-	-	-	-	-
Net operating expenditure					
Open plus periodic detention	8 642	8 471	7 398	7 889	9 784
Secure	14 975	15 533	14 338	18 350	21 932
All prisons	23 616	24 004	21 737	26 239	31 717
Net operating expenditure plus depreciation	23 895	24 255	22 038	26 666	33 462
Capital costs					
All prisons	1 449	1 370	1 528	1 541	2 819
Total net operating expenditure and capital costs	25 065	25 374	23 264	27 780	34 536
Transport and escort services	1 791	1 676	1 839	1 781	2 384
Payroll tax					
Open plus periodic detention
Secure
All prisons

(a) Figures on unknown Indigenous status in 2004-05 relate to data collated from January to end of June 2005 only.

(b) Rates are calculated per 100 000 of the relevant adult population, that is, per 100 000 of total, male, female, Indigenous, and Non-Indigenous adults respectively. Table 8A.4 footnotes provide additional information on the basis for the rate calculation and qualifiers on interpretation. Historical rates in this table may differ from those in previous Reports, as historical population data have been revised using Final Rebased Estimated Resident Population (ERP) data following the 2006 Census of Population and Housing (for 31 December 2002 to 2006). Similarly, new ABS Indigenous population estimates and projections have been used.

(c) Excludes periodic detention centres — see Table 8A.65.

(d) Figures for 2008-09 are an average of design capacity calculated across the reporting period that takes into account a three-month period during which the Alexander Maconochie Centre was operating, and therefore design capacity for only that facility applies, and a nine-month period where ACT prisoners were held in ACT remand facilities or NSW prisons and therefore only ACT remand centre capacity applies.

(e) Data for previous years have been adjusted by the gross domestic product deflator.
.. Not applicable. — Nil or rounded to zero.

Table 8A.63

**Australian Capital Territory
Table 8A.63 Descriptors, prisons**

	2004-05	2005-06	2006-07	2007-08	2008-09
Source :	ABS (unpublished) <i>Australian Demographic Statistics</i> , Cat. no. 3101.0; ABS (unpublished) <i>Experimental Estimates and Projections, Indigenous Australians</i> (series B), Cat. no. 3238.0; ACT Government (unpublished).				

Table 8A.67

Australian Capital Territory

Table 8A.67 Efficiency, prison and periodic detention

	2004-05	2005-06	2006-07	2007-08	2008-09
Net operating expenditure per prisoner per day (2008-09 \$) (a)					
Open plus periodic detention prisoners	196.50	216.35	219.50	245.09	368.82
Secure prisoners	441.56	423.08	418.74	464.91	528.82
Total — all prisoners	303.19	316.39	319.90	366.17	466.40
Capital costs per prisoner per day (2008-09 \$) (a), (b)					
User cost of capital	15.03	14.75	18.05	15.54	15.79
Land	0.62	0.61	0.65	10.09	10.12
Other assets	14.41	14.14	17.40	5.46	5.67
Debt servicing fees
Depreciation	3.57	3.30	4.44	5.96	25.67
Total capital — all prisoners	18.60	18.05	22.48	21.50	41.46
Total net operating expenditure and capital costs per prisoner per day (2008-09 \$) (a)	321.79	334.45	342.38	387.67	507.86
Prison utilisation rates (per cent) (c)					
Open	55.4
Secure	82.9
Total	69.2	67.9	65.1	83.3	76.7
Periodic detention utilisation rate (per cent)	90.5	103.0	122.5	133.7	77.1

(a) Data for previous years have been adjusted by the gross domestic product deflator.

(b) ACT capital costs do not reflect the capital cost component of ACT prisoners held in NSW prisons, which are subsumed under contracted management fees and reported in operating expenditure figures. The ACT prison's land is included in 2007-08, but not the building, as the prison was not commissioned until 2008-09.

(c) Prior to 2008-09, utilisation rates related to prisoners held in the two ACT remand centres and the open and secure custody breakdown was not applicable.
.. Not applicable.

Source: ACT Government (unpublished).

Table 8A.68

Australian Capital Territory

Table 8A.68 Descriptors, community corrections

	2004-05	2005-06	2006-07	2007-08	2008-09
Average number of offenders					
on restricted movement orders (a)					
Male, Indigenous	1	–
Male, non-Indigenous	5	1
Male, unknown	–	–
Female, Indigenous	1	–
Female, non-Indigenous	–	0.3
Female, unknown	–	–
Gender not recorded	–	–
Total persons	6	1
on reparation orders					
Male, Indigenous	6	4	4	4	12
Male, non-Indigenous	80	51	72	99	125
Male, unknown	4	8	4	7	6
Female, Indigenous	1	0.1	1	1	2
Female, non-Indigenous	11	16	19	20	29
Female, unknown	1	2	2	3	3
Gender not recorded	–	–	–	–	–
Total persons	103	81	102	134	176
on supervision orders					
Male, Indigenous	73	74	81	97	121
Male, non-Indigenous	794	700	823	905	1 019
Male, unknown	91	159	66	84	59
Female, Indigenous	22	18	13	21	36
Female, non-Indigenous	134	119	129	149	177
Female, unknown	18	30	10	17	12
Gender not recorded	–	–	–	–	–
Total persons	1 132	1 099	1 121	1 273	1 424
Average daily distinct persons serving orders (b)					
Male, Indigenous	79	78	85	101	134
Male, non-Indigenous	874	750	895	1 004	1 143
Male, unknown	95	167	70	91	65
Female, Indigenous	23	18	14	22	38
Female, non-Indigenous	146	134	149	169	206
Female, unknown	19	32	11	21	15
Total persons, Indigenous	103	96	99	123	172
Total persons, non-Indigenous	1 020	885	1 043	1 173	1 349
Total persons, unknown	114	200	81	111	80
Total males	1 048	996	1 049	1 196	1 342
Total females	187	184	174	212	259

Table 8A.68

Australian Capital Territory

Table 8A.68 Descriptors, community corrections

	2004-05	2005-06	2006-07	2007-08	2008-09
Total gender not recorded	-	-	-	-	-
Total persons	1 236	1 180	1 223	1 407	1 601
Crude community corrections rates (c)					
Offenders/100 000	492.1	461.5	470.6	533.4	593.4
Male offenders/100 000	853.3	794.7	821.7	922.2	1 010.0
Female offenders/100 000	146.1	141.2	131.5	157.7	189.2
Indigenous offenders/100 000	4 429.6	3 974.7	4 002.8	4 814.0	6 504.4
Non-Indigenous offenders/100 000	409.8	349.3	405.2	449.0	505.1
Work hours ordered/100 000	12 297	11 769	12 583	19 637	22 862
Work hours performed/100 000	6 371	6 514	7 328	9 649	11 917
Recurrent expenditure (2008-09 \$'000) (d)					
Operating expenditure	8 606	7 203	6 512	6 896	6 672
Operating revenues	-	-	-	-	-
Net operating expenditure	8 606	7 203	6 512	6 896	6 672
Net operating expenditure plus depreciation	8 626	7 219	6 542	6 975	6 693
Capital costs	36	30	30	111	36
Total net operating expenditure and capital costs	8 642	7 233	6 542	7 006	6 708
Payroll tax

(a) Home Detention was removed as a sentencing option from ACT legislation as of 30 June 2005 with the program continuing to operate up to 23 September 2005 when all outstanding orders had been completed. Data for 2005-06 is averaged over the 85 days of operation, not the entire financial year.

(b) Total persons may not equal the sum of persons per order type because an offender may be serving more than one type of order.

(c) Rates are calculated per 100 000 of the relevant adult population, that is, per 100 000 of total, male, female, Indigenous, and Non-Indigenous adults respectively. Table 8A.4 footnotes provide additional information on the basis for the rate calculation and qualifiers on interpretation. Historical rates in this table may differ from those in previous Reports, as historical population data have been revised using Final Rebased Estimated Resident Population (ERP) data following the 2006 Census of Population and Housing (for 31 December 2002 to 2006). Similarly, new ABS Indigenous population estimates and projections have been used.

(d) Data for previous years have been adjusted by the gross domestic product deflator.

.. Not applicable. – Nil or rounded to zero.

Source: ABS (unpublished) *Australian Demographic Statistics*, Cat. no. 3101.0; ABS (unpublished) *Experimental Estimates and Projections, Indigenous Australians* (series B), Cat. no. 3238.0; ACT Government (unpublished).

Table 8A.70

Australian Capital Territory
Table 8A.70 Efficiency, community corrections

	2004-05	2005-06	2006-07	2007-08	2008-09
Net operating expenditure per offender per day (2008-09 \$) (a)	19.07	16.72	14.57	13.42	11.41
Capital costs per offender per day (2008-09 \$) (a)	0.08	0.07	0.07	0.22	0.06
Total net operating expenditure and capital costs per offender per day (2008-09 \$) (a)	19.15	16.79	14.64	13.63	11.48
Offender to staff ratios					
Offender-to-operational staff	24.8	23.9	26.6	29.0	44.5
Offender-to-other staff	63.1	78.4	86.0	104.5	57.2
Offender-to-all staff	17.8	18.3	20.3	22.7	25.0

(a) Data for previous years have been adjusted by the gross domestic product deflator.

Source: ACT Government (unpublished).