

Under embargo until 1.00am on Friday, 28 January 2011

For personal use only. Third parties should not be approached until the embargo is lifted.

BREAST CANCER DETECTION AND MANAGEMENT (CHAPTER 12)

- The focus of this chapter is on the performance of governments in managing two key health issues: breast cancer and mental health. This factsheet focuses on the performance of governments in detecting and managing breast cancer.
- Governments spent around \$175 million on breast cancer screening in 2008-09 (table 12A.6). Over 886 000 women aged 40 years or over were screened by BreastScreen Australia in 2009, compared with around 827 500 in 2005 (p. 12.12).

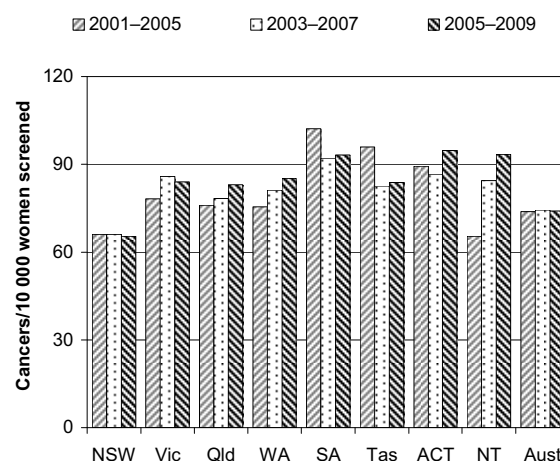
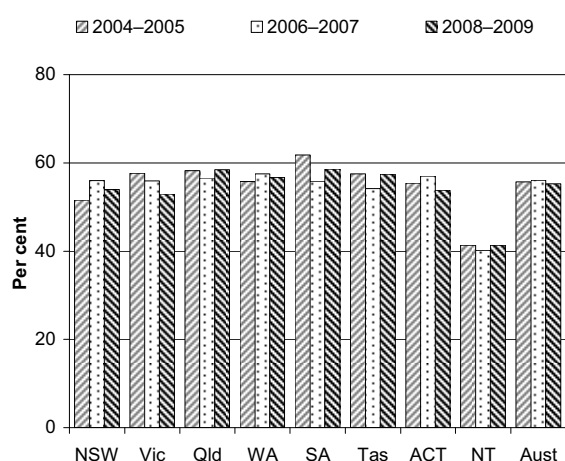
Objectives of breast cancer detection and management

- The objectives of breast cancer detection and management are to reduce morbidity and mortality attributable to breast cancer, and to improve the quality and duration of life of women with breast cancer in a manner that is equitable and efficient.

Selection of results

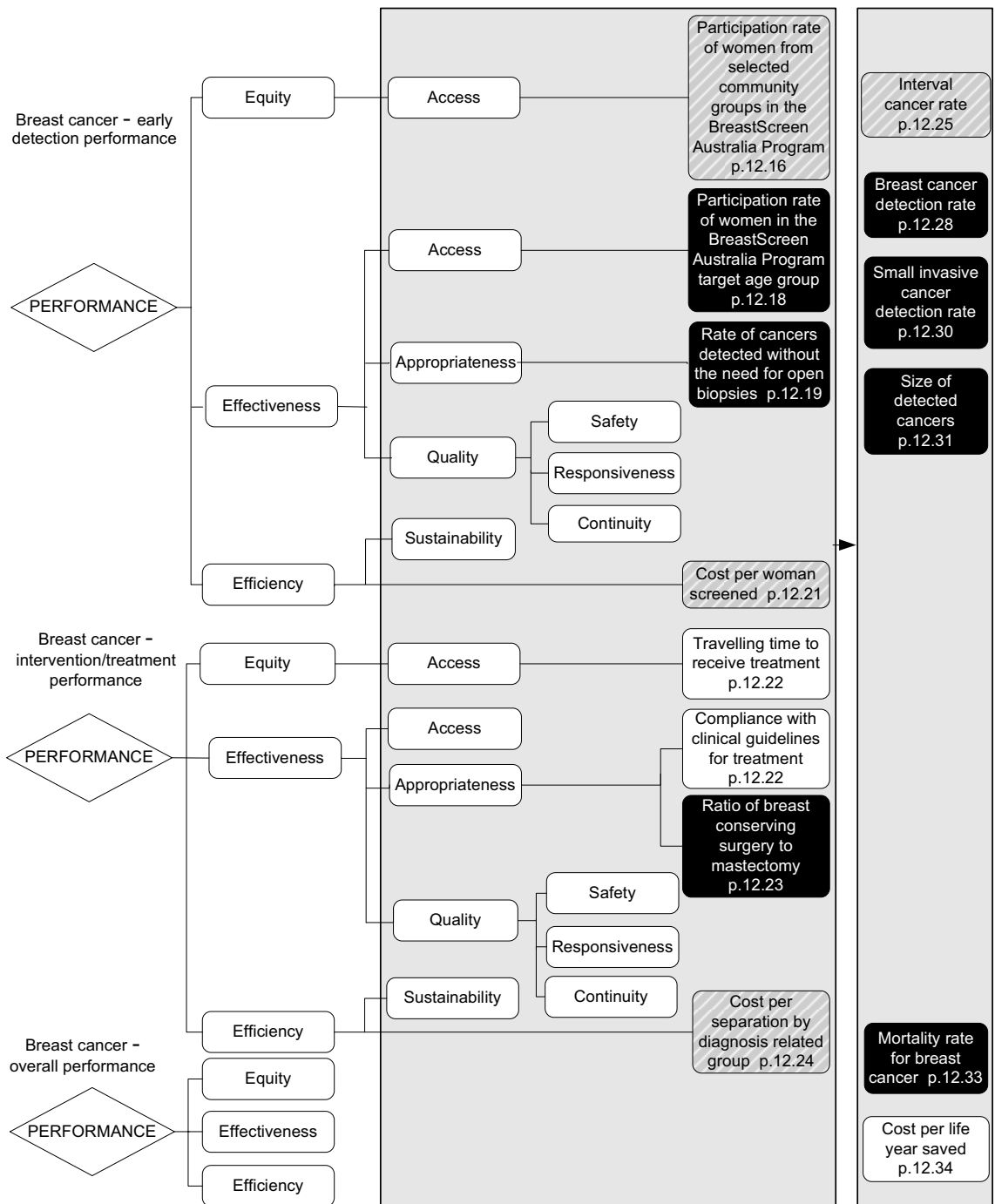
Age standardised participation rates of women aged 50–69 years in BreastScreen Australia screening programs (24 month period) (p. 12.18)^a

Annual average age standardised breast cancer detection rate for women aged 50–69 years, invasive cancers, first screening round (p. 12.28)^a



^a Data and caveats for these figures are available electronically from the website for the Review of Government Service Provision (www.pc.gov.au/gsp/reports/rogs/2011). Data may be subject to revision. The most recent data will be available on the Review website.

Performance indicators for breast cancer detection and management (figure 12.7, p. 12.15)



Key to indicators

- Text** Data for these indicators comparable, subject to caveats to each chart or table
- Text** Data for these indicators not complete or not directly comparable
- Text** These indicators yet to be developed or data not collected for this Report: chapter contains explanatory text

Developments in reporting since the 2010 Report

- reporting updated data by remoteness for the equity — access indicator ‘Participation rate of women from selected community groups in the BreastScreen Australia Program’ — previously, the most recent data reported by remoteness were for the 24 month period 2005 and 2006
- inclusion of some ‘data quality information’ (DQI) documentation.

[END]

Background information:	Lawrence McDonald, Head of Secretariat	03 9653 2178/0421 584 905
Other information:	Clair Angel, Media and Publications	02 6240 3239/0417 665 443

Please do not approach other parties for comment before Friday 28 January 2011.

Media copies of this report are available from Clair Angel on 02 6240 3239.

Hard copies of this publication are available from Canprint Communications (ph: 1300 889 873 or email sales@infoservices.com.au). The report will be available via the Internet at www.pc.gov.au on the morning of Friday 28 January 2011.

Tables with an ‘A’ suffix (eg table 12A.5) are in the attachments on the Review website.