
6 Police services

This chapter reports on the performance of police services. These services comprise the operations of the police agencies of each State and Territory government. The national policing function of the Australian Federal Police (AFP) and other national non-police law enforcement bodies (such as the Australian Crime Commission) are not included in the report.

Performance is reported against four activity areas (community safety, crime, road safety and judicial services). The main efficiency indicator, expenditure on police services per person, combines all the activity areas.

It should be noted that the use of the term ‘offender’ in this chapter refers to a person who is alleged to have committed an offence and is not the same as the definition used in chapter 8 (‘Corrective services’), where the term ‘offender’ refers to a person who has been convicted of an offence and is subject to a correctional sentence.

Police services are the principal means through which State and Territory governments pursue the achievement of a safe and secure environment for the community, through the investigation of criminal offences, response to life threatening situations, the provision of services to the judicial process and the provision of road safety and traffic management. They also respond to more general needs in the community — for example, assisting emergency services, mediating family and neighbourhood disputes, delivering messages regarding death or serious illness, and advising on general policing and crime issues. Additionally, police are involved in various activities which aim to improve public safety and prevent crime.

Indigenous data in the police services chapter

The police services chapter in the *Report on Government Services 2009* (2009 Report) contains the following data items on Indigenous people:

- police service expenditure, Indigenous staff and asset descriptors
- proportion of police staff from Indigenous backgrounds relative to the proportion of the general population who are from Indigenous backgrounds, 2007-08
- deaths in police custody and custody-related operations, 2003–2007.

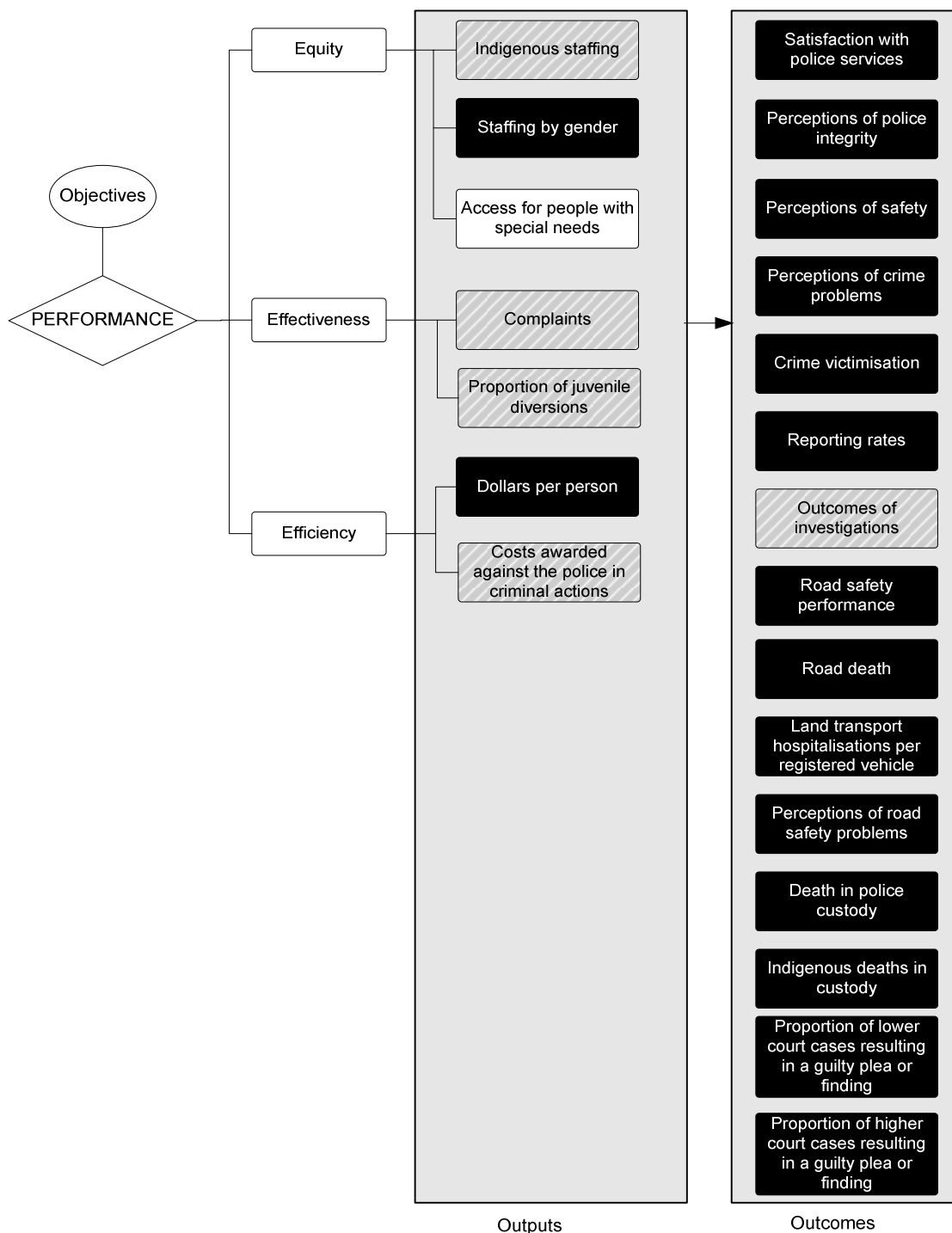
Attachment tables

Attachment tables for data within the police services chapter of this compendium are contained in attachment 6A of the compendium. These tables are identified in references throughout this chapter by an 'A' suffix (for example, table 6A.3 is table 3 in the police services attachment). As the data are directly sourced from the 2009 Report, the compendium also notes where the original table, figure or text in the 2009 Report can be found. For example, where the compendium refers to '2009 Report, p. 6.15' this is page 15 of chapter 6 of the 2009 Report, and '2009 Report, table 6A.2' is attachment table 2 of attachment 6 of the 2009 Report.

Framework of performance indicators

Data for Indigenous people are reported for a subset of the performance indicators for police services in the 2009 Report. It is important to interpret these data in the context of the broader performance indicator framework outlined in figure 6.1. The performance indicator framework shows which data are comparable in the 2009 Report. For data that are not considered directly comparable, the text includes relevant caveats and supporting commentary.

Figure 6.1 General performance framework for the police services sector



Key to indicators

- Text** Data for these indicators comparable, subject to caveats to each chart or table
- Text** Data for these indicators not complete or not directly comparable
- Text** These indicators yet to be developed or data not collected for this Report: chapter contains explanatory text

Source: 2009 Report, figure 6.4, p. 6.8.

Indigenous staffing

This section focuses on the performance of mainstream police services in relation to Indigenous Australians. ‘Indigenous staffing’ is an indicator of governments’ objective to provide police services in an equitable manner. Indigenous people may feel more comfortable in ‘accessing’ police services when they are able to deal with Indigenous police staff (box 6.1).

Box 6.1 Indigenous staffing

‘Indigenous staffing’ is defined as the proportion of police staff from Indigenous backgrounds compared to the proportion of the general population aged 20–64 years who are from Indigenous backgrounds. These data are used because a significantly larger proportion of the Indigenous population falls within the younger non-working age groupings compared with the non-Indigenous population. Readily available ABS population projections of people aged 20–64 years at 30 June 2006 provide a proxy for the estimated working population.

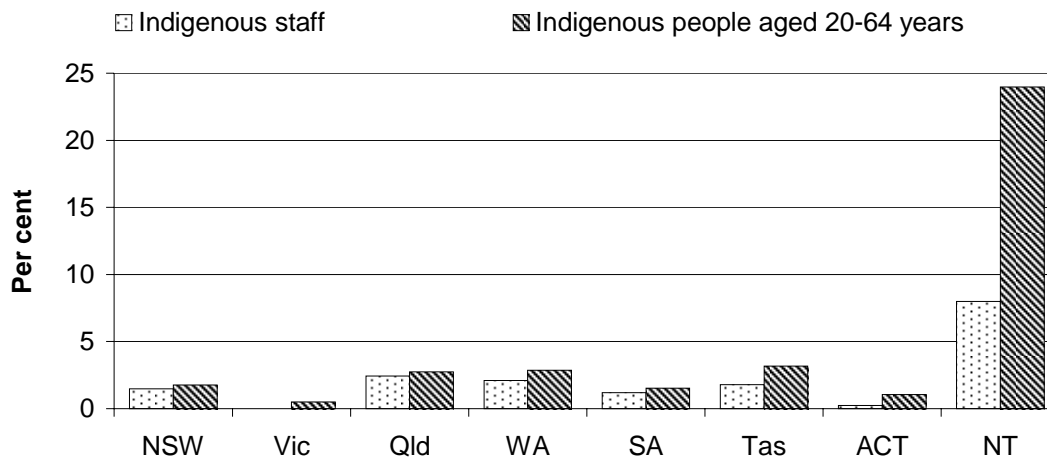
A proportion of police staff from Indigenous backgrounds closer to the proportion of the general population aged 20–64 years who are from Indigenous backgrounds represents a more equitable outcome.

The process of identifying Indigenous staff members generally relies on self-identification as being Aboriginal and/or Torres Strait Islander. Where Indigenous people are asked to identify themselves, the accuracy of the data will partly depend on how they perceive the advantages (or disadvantages) of identification and whether these perceptions change over time. In addition, many factors will influence the willingness of Indigenous people to access police services, including familiarity with procedures for dealing with police and confidence in the effectiveness of police services.

Data reported for this indicator are not complete and not directly comparable.

The proportion of Indigenous police staff in 2007-08 was similar to the representation of Indigenous people in the population aged 20–64 years for most jurisdictions (figure 6.2).

Figure 6.2 Proportion of Indigenous staff in 2007-08 and Indigenous population aged 20–64 years^{a, b, c}



^a Indigenous staff numbers relate to those staff who self-identify as being of Aboriginal and/or Torres Strait Islander descent. Indigenous staff are reported as the sum of both the operational and non-operational categories. ^b Information on Indigenous status is collected only at the time of recruitment. ^c Indigenous and non-Indigenous staff data were unable to be separated in Victoria.

Source: ABS (2004) *Indigenous population projections aged 20–64 years* Cat. no. 3238.0 (Low Series); State and Territory governments (unpublished); table 6A.9; 2009 Report, figure 6.6, p. 6.13.

Deaths in police custody and custody-related operations

‘Deaths in custody and custody-related operations’, and ‘Indigenous deaths in custody and custody-related operations’ are indicators of governments’ objective to provide safe custody for alleged offenders, and ensure fair and equitable treatment for both victims and alleged offenders (box 6.2).

Box 6.2 Deaths in custody and custody-related operations, and Indigenous deaths in custody and custody related operations

‘Deaths in police custody and custody-related operations’ and ‘Indigenous deaths in custody and custody-related operations’ are defined as the number of non-Indigenous and Indigenous deaths in police custody and custody-related operations.

A lower number of deaths in custody and custody-related operations is a better outcome.

Data reported for these indicators are comparable.

Nationally, there were 30 deaths in police custody and custody-related operations in 2007 (up from 22 in 2006). This total comprised 26 non-Indigenous deaths and 4 Indigenous deaths (table 6.1).

Table 6.1 Deaths in police custody and custody-related operations^{a, b}

	<i>NSW</i>	<i>Vic</i>	<i>Qld</i>	<i>WA</i>	<i>SA</i>	<i>Tas</i>	<i>ACT</i>	<i>NT</i>	<i>Aust</i>
Non-Indigenous deaths									
2003	11	4	7	3	2	–	1	–	28
2004	9	4	5	2	2	–	1	–	23
2005	3	5	6	–	1	–	–	–	15
2006	8	3	1	2	1	–	1	–	16
2007	5	7	3	4	4	–	–	2	26
Indigenous deaths									
2003	1	–	2	4	–	–	–	1	8
2004	2	1	2	1	1	–	–	1	8
2005	1	–	1	6	–	–	–	–	8
2006	–	1	1	2	1	–	–	1	6
2007	–	–	2	–	2	–	–	–	4
Total Indigenous deaths 2003–07^c	4	2	8	13	4	–	–	3	34
Total deaths									
2003	12	4	9	7	2	–	1	1	36
2004	11	5	7	3	3	–	1	1	31
2005	4	5	7	6	1	–	–	–	23
2006	8	4	2	4	2	–	1	1	22
2007	5	7	5	4	6	–	–	2	30
Total 2003–07	40	25	30	24	14	–	3	5	142

^a Deaths in police custody include: deaths in institutional settings (for example, police stations/lockups and police vehicles, or during transfer to or from such an institution, or in hospitals following transfer from an institution); and other deaths in police operations where officers were in close contact with the deceased (for example, most raids and shootings by police). Deaths in custody-related operations cover situations where officers did not have such close contact with the person as to be able to significantly influence or control the person's behaviour (for example, most sieges and most cases where officers were attempting to detain a person, such as pursuits). ^b The AIC Deaths in police custody and custody-related operations for 2006-07 are preliminary (unpublished) and final data in other publications might differ. ^c In 2006, two deaths occurred in NSW for which Indigenous status has not been determined. – Nil or rounded to zero.

Source: AIC (various years, unpublished), *Deaths in Custody*, Australia; table 6A.10; 2009 Report, figure 6.4, p. 6.61.

Attachment tables

Attachment tables for data within this chapter are contained in the attachment to the compendium. These tables are identified in references throughout this chapter by an 'A' suffix (for example, table 6A.3 is table 3 in the police attachment). The tables included in the attachment are listed below.

Table 6A.1	Police service expenditure, staff and asset descriptors, NSW
Table 6A.2	Police service expenditure, staff and asset descriptors, Victoria
Table 6A.3	Police service expenditure, staff and asset descriptors, Queensland
Table 6A.4	Police service expenditure, staff and asset descriptors, WA
Table 6A.5	Police service expenditure, staff and asset descriptors, SA
Table 6A.6	Police service expenditure, staff and asset descriptors, Tasmania
Table 6A.7	Police service expenditure, staff and asset descriptors, ACT
Table 6A.8	Police service expenditure, staff and asset descriptors, NT
Table 6A.9	Indigenous, sworn and unsworn police staff
Table 6A.10	Number of deaths in police custody and custody-related operations, 2003 to 2007

6A Police services — attachment

Definitions for the indicators and descriptors in this attachment are in section 6.11 of the chapter in the *Report on Government Services 2009* (2009 Report). Data in this Report are examined by the Police Services Working Group, but have not been formally audited by the Secretariat. A peer review process is also undertaken by the Police Practitioners' Group in the development of the data definitions. Unsourced information was obtained from the Australian, State and Territory governments.

This file is available in Adobe PDF format on the Review web page (www.pc.gov.au/gsp). Users without Internet access can contact the Secretariat to obtain these tables (see details on the inside front cover of the Report).

Attachment contents

Table 6A.1	Police service expenditure, staff and asset descriptors, NSW
Table 6A.2	Police service expenditure, staff and asset descriptors, Victoria
Table 6A.3	Police service expenditure, staff and asset descriptors, Queensland
Table 6A.4	Police service expenditure, staff and asset descriptors, WA
Table 6A.5	Police service expenditure, staff and asset descriptors, SA
Table 6A.6	Police service expenditure, staff and asset descriptors, Tasmania
Table 6A.7	Police service expenditure, staff and asset descriptors, ACT
Table 6A.8	Police service expenditure, staff and asset descriptors, NT
Table 6A.9	Indigenous, sworn and unsworn police staff
Table 6A.10	Number of deaths in police custody and custody-related operations, 2003 to 2007

Table 6A.1

Table 6A.1 **Police service expenditure, staff and asset descriptors, NSW**

	<i>Unit</i>	<i>2003-04</i>	<i>2004-05</i>	<i>2005-06</i>	<i>2006-07</i>	<i>2007-08</i>
Expenditure						
Recurrent expenditure (a)						
Salaries and payments in the nature of salaries						
Salaries and related payments	\$m	1 237.5	1 285.6	1 368.8	1 494.0	1 616.0
Superannuation	\$m	120.2	128.4	153.7	164.2	194.6
Payroll tax	\$m	79.5	81.0	85.7	90.1	99.9
Total salaries and payments	\$m	1 437.2	1 494.9	1 608.2	1 748.4	1 910.5
Other recurrent expenditure	\$m	378.4	369.8	397.9	435.6	432.7
Depreciation	\$m	69.7	76.2	86.3	98.9	105.1
Total recurrent expenditure	\$m	1 885.3	1 940.9	2 092.4	2 282.9	2 448.3
Net recurrent expenditure						
Revenue from own sources (ROS)	\$m	40.0	36.6	46.6	84.8	118.8
Total recurrent expenditure less ROS and payroll tax	\$m	1 765.8	1 823.3	1 960.2	2 108.0	2 229.6
Capital expenditure						
User cost of capital (b)	\$m	67.7	72.4	77.3	81.3	85.9
Capital expenditure	\$m	77.4	109.3	110.8	137.2	142.2
Expenditure aggregates						
Total cash expenditure (c)	\$m	1 893.0	1 974.0	2 116.9	2 321.2	2 485.4
Total accrual costs (d)	\$m	1 953.0	2 013.3	2 169.8	2 364.1	2 534.1
Staffing costs						
Average police staff costs	\$	78 539	84 241	91 487	94 418	105 575
Average non-police staff costs	\$	66 063	67 717	68 439	75 577	85 417
Staff by Indigenous and operational status (e)						
Operational FTE staff						
Sworn	FTE	14 141	13 796	14 011	14 691	14 560
Civilian	FTE	1 512	1 477	1 253	1 247	1 617
Other	FTE	–	119	125	124	140
Operational FTE staff	FTE	15 653	15 392	15 389	16 062	16 316
Non-operational FTE staff						
Sworn	FTE	868	847	623	642	460
Civilian	FTE	2 400	2 229	2 531	2 580	2 017
Other	FTE	–	35	27	27	29
Non-operational FTE staff	FTE	3 268	3 111	3 181	3 249	2 506
Total staff	FTE	18 921	18 503	18 570	19 311	18 822
Indigenous FTE staff						
Operational	FTE	191	222	246	270	219
Non-operational	FTE	na	na	na	na	61
Indigenous FTE staff	FTE	191	222	246	270	280

Table 6A.1

Table 6A.1 Police service expenditure, staff and asset descriptors, NSW

	<i>Unit</i>	<i>2003-04</i>	<i>2004-05</i>	<i>2005-06</i>	<i>2006-07</i>	<i>2007-08</i>
Assets by value						
Land	\$'000	266 924	270 636	292 328	363 824	358 536
Buildings and fittings	\$'000	409 225	439 204	478 733	513 345	553 628
Other	\$'000	437 038	465 771	488 092	502 327	519 508
Total value of assets	\$'000	1 113 187	1 175 611	1 259 153	1 379 496	1 431 672

- (a) Salaries and payments in the nature of salaries include long service leave, workers' compensation insurance and fringe benefits tax.
- (b) User cost of capital on value of assets (excluding land).
- (c) Comprises salaries and payments in the nature of salary, other recurrent expenditure, and capital expenditure.
- (d) Comprises salaries and payments in the nature of salary, other recurrent expenditure, depreciation, and the user cost of capital.
- (e) Headcounts at 30 June for all years except 2007-08 (which are FTE as at 30 June). Indigenous staff for all years cannot be split between operational and non-operational, numbers listed as 'Operational Indigenous FTE staff' are in fact total Indigenous staff numbers.

na Not available. – Nil or rounded to zero.

Source: NSW Government (unpublished); 2009 Report, table 6A.1.

Table 6A.2

Table 6A.2 **Police service expenditure, staff and asset descriptors, Victoria**

	<i>Unit</i>	<i>2003-04</i>	<i>2004-05</i>	<i>2005-06</i>	<i>2006-07</i>	<i>2007-08</i>
Expenditure						
Recurrent expenditure						
Salaries and payments in the nature of salaries						
Salaries and related payments	\$m	794.2	867.7	906.4	931.3	981.4
Superannuation	\$m	86.9	94.5	101.0	114.3	116.1
Payroll tax	\$m	43.6	46.7	49.7	50.7	53.0
Total salaries and payments	\$m	924.8	1 008.9	1 057.1	1 096.3	1 150.5
Other recurrent expenditure	\$m	305.7	296.2	376.5	403.5	414.2
Depreciation	\$m	21.1	27.8	35.5	44.1	54.6
Total recurrent expenditure	\$m	1 251.6	1 332.9	1 469.1	1 543.9	1 619.2
Net recurrent expenditure						
Revenue from own sources (ROS)	\$m	11.1	10.5	34.3	17.4	15.8
Total recurrent expenditure less ROS and payroll tax	\$m	1 196.8	1 275.6	1 385.2	1 475.8	1 550.4
Capital expenditure						
User cost of capital (a)	\$m	32.9	33.2	45.2	53.6	50.5
Capital expenditure	\$m	69.5	61.0	119.3	101.3	62.6
Expenditure aggregates						
Total cash expenditure (b)	\$m	1 300.0	1 366.1	1 552.9	1 601.1	1 627.2
Total accrual costs (c)	\$m	1 284.5	1 366.1	1 514.3	1 597.5	1 669.7
Staffing costs						
Average police staff costs	\$	78 965	84 779	86 190	87 008	90 234
Average non-police staff costs	\$	45 237	47 624	48 270	51 931	57 052
Staff by Indigenous and operational status (d)						
Operational FTE staff						
Sworn	FTE	9 981	10 097	10 420	10 657	10 554
Civilian	FTE	247	296	330	323	354
Other	FTE	145	146	145	146	144
Operational FTE staff	FTE	10 373	10 539	10 895	11 126	11 052
Non-operational FTE staff						
Sworn	FTE	319	349	342	336	467
Civilian	FTE	1 912	1 936	1 962	2 015	2 079
Other	FTE	160	211	246	209	157
Non-operational FTE staff	FTE	2 391	2 496	2 550	2 560	2 703
Total staff	FTE	12 764	13 035	13 445	13 686	13 755
Indigenous FTE staff						
Operational	FTE	9	na	na	na	na
Non-operational	FTE	na	na	na	na	na
Indigenous FTE staff	FTE	na	na	na	na	na

Table 6A.2

Table 6A.2 Police service expenditure, staff and asset descriptors, Victoria

	<i>Unit</i>	<i>2003-04</i>	<i>2004-05</i>	<i>2005-06</i>	<i>2006-07</i>	<i>2007-08</i>
Assets by value						
Land	\$'000	175 694	179 810	177 671	219 770	227 912
Buildings and fittings	\$'000	340 622	322 275	444 069	541 576	522 449
Other	\$'000	70 658	93 327	121 129	128 556	108 883
Total value of assets	\$'000	586 974	595 412	742 869	889 902	859 244

- (a) User cost of capital on value of assets (excluding land).
- (b) Comprises salaries and payments in the nature of salary, other recurrent expenditure, and capital expenditure.
- (c) Comprises salaries and payments in the nature of salary, other recurrent expenditure, depreciation, and the user cost of capital.
- (d) Decrease in operational, and increase in non-operational, sworn staff is due to re-categorisation of training positions from operational to non-operational.

na Not available.

Source: Victorian Government (unpublished); 2009 Report, table 6A.2.

Table 6A.3

Table 6A.3 Police service expenditure, staff and asset descriptors, Queensland

	<i>Unit</i>	<i>2003-04</i>	<i>2004-05</i>	<i>2005-06</i>	<i>2006-07</i>	<i>2007-08</i>
Expenditure						
Recurrent expenditure						
Salaries and payments in the nature of salaries						
Salaries and related payments	\$m	664.7	711.9	776.6	838.9	917.9
Superannuation	\$m	87.5	94.2	102.4	109.7	119.9
Payroll tax	\$m	34.8	37.6	40.7	44.2	48.3
Total salaries and payments	\$m	787.0	843.8	919.8	992.7	1 086.0
Other recurrent expenditure	\$m	183.9	164.4	222.6	231.9	267.6
Depreciation (a)	\$m	38.9	45.1	41.6	54.9	62.6
Total recurrent expenditure	\$m	1 009.8	1 053.3	1 183.9	1 279.6	1 416.2
Net recurrent expenditure						
Revenue from own sources (ROS)	\$m	29.3	37.5	50.9	55.9	67.6
Total recurrent expenditure less ROS and payroll tax	\$m	945.7	978.2	1 092.3	1 179.5	1 300.3
Capital expenditure						
User cost of capital (b)	\$m	56.5	67.0	72.4	83.0	89.5
Capital expenditure	\$m	88.0	110.8	106.9	104.6	163.4
Expenditure aggregates						
Total cash expenditure (c)	\$m	1 059.0	1 118.9	1 249.2	1 329.3	1 517.0
Total accrual costs (d)	\$m	1 066.3	1 120.3	1 256.4	1 362.5	1 505.7
Staffing costs						
Average police staff costs	\$	75 564	79 285	83 544	86 038	90 481
Average non-police staff costs	\$	45 246	46 731	49 542	53 308	53 878
Staff by Indigenous and operational status						
Operational FTE staff						
Sworn (e)	FTE	7 701	7 967	8 206	8 467	9 129
Civilian	FTE	1 291	1 295	1 408	1 480	1 548
Other (f)	FTE	143	148	153	296	459
Operational FTE staff (e)	FTE	9 135	9 410	9 767	10 243	11 136
Non-operational FTE staff						
Sworn (e)	FTE	795	798	821	853	566
Civilian	FTE	1 486	1 443	1 452	1 376	1 368
Other (f)	FTE	285	299	330	428	500
Non-operational FTE staff	FTE	2 566	2 540	2 603	2 657	2 434
Total staff	FTE	11 701	11 950	12 370	12 900	13 570
Indigenous FTE staff						
Operational	FTE	na	na	na	286	310
Non-operational	FTE	na	na	na	19	20
Indigenous FTE staff (g)	FTE	na	na	na	305	330

Table 6A.3

Table 6A.3 **Police service expenditure, staff and asset descriptors, Queensland**

	<i>Unit</i>	<i>2003-04</i>	<i>2004-05</i>	<i>2005-06</i>	<i>2006-07</i>	<i>2007-08</i>
Assets by value						
Land	\$'000	160 575	229 196	274 214	416 561	500 749
Buildings and fittings	\$'000	557 026	664 477	788 025	917 442	897 933
Other	\$'000	149 215	173 499	117 246	119 658	220 486
Total value of assets	\$'000	866 816	1 067 172	1 179 485	1 453 661	1 619 168

- (a) Depreciation is calculated on a straight-line basis so as to write off net cost or revalued amount of each depreciable asset, less its estimated residual value, progressively over its estimated useful life.
- (b) User cost of capital is calculated at an opportunity cost of 8 per cent per annum on total value of asset holdings (excluding land).
- (c) Comprises salaries and payments in the nature of salary, other recurrent expenditure, and capital expenditure.
- (d) Comprises salaries and payments in the nature of salary, other recurrent expenditure, depreciation, and the user cost of capital.
- (e) The Queensland Police's definitions of operational and non-operational status for sworn members vary slightly from the national data dictionary.
- (f) Operational other includes police liaison officers, assistant watchhouse officers, and Aboriginal and Torres Strait Islander police. Non-operational other includes police recruits and Aboriginal and Torres Strait Islander trainees.
- (g) Indigenous staff numbers relate to those staff who self identify as being of Aboriginal or Torres Strait Islander descent. Queensland Police Service was unable to validate Indigenous staff by operational status prior to 2006-07.

na Not available.

Source: Queensland Government (unpublished); 2009 Report, table 6A.3.

Table 6A.4

Table 6A.4 **Police service expenditure, staff and asset descriptors, WA**

	<i>Unit</i>	<i>2003-04</i>	<i>2004-05</i>	<i>2005-06</i>	<i>2006-07</i>	<i>2007-08</i>
Expenditure						
Recurrent expenditure						
Salaries and payments in the nature of salaries						
Salaries and related payments	\$m	396.8	428.0	457.5	491.1	558.0
Superannuation	\$m	36.1	45.0	44.4	47.7	53.2
Payroll tax (a)	\$m	22.5	24.4	25.7	27.6	31.2
Total salaries and payments	\$m	455.4	497.4	527.6	566.4	642.3
Other recurrent expenditure (b)	\$m	144.5	162.6	170.4	197.4	181.1
Depreciation (c)	\$m	16.8	17.0	20.3	28.1	37.8
Total recurrent expenditure	\$m	616.7	676.9	718.3	791.9	861.2
Net recurrent expenditure						
Revenue from own sources (ROS)	\$m	19.2	19.4	18.9	24.1	25.1
Total recurrent expenditure less ROS and payroll tax	\$m	575.0	633.2	673.8	740.2	804.9
Capital expenditure						
User cost of capital (d)	\$m	23.5	27.0	31.2	37.0	41.8
Capital expenditure	\$m	57.3	43.4	82.9	80.0	65.0
Expenditure aggregates						
Total cash expenditure (e)	\$m	657.2	703.4	780.9	843.8	888.4
Total accrual costs (f)	\$m	640.2	703.9	749.5	828.9	903.0
Staffing costs						
Average police staff costs	\$	80 462	86 480	89 766	94 024	99 659
Average non-police staff costs	\$	56 483	58 105	58 735	61 742	64 857
Staff by Indigenous and operational status						
Operational FTE staff						
Sworn	FTE	4 449	4 507	4 555	4 597	4 813
Civilian	FTE	664	692	726	761	866
Other	FTE	123	128	113	76	31
Operational FTE staff	FTE	5 236	5 327	5 394	5 434	5 710
Non-operational FTE staff						
Sworn	FTE	378	383	424	474	569
Civilian	FTE	376	436	503	580	704
Other	FTE	23	26	32	35	33
Non-operational FTE staff	FTE	777	845	959	1 089	1 306
Total staff	FTE	6 013	6 172	6 353	6 523	7 016
Indigenous FTE staff						
Operational	FTE	158	170	169	152	141
Non-operational	FTE	17	20	14	14	7
Indigenous FTE staff (g)	FTE	175	190	183	166	148

Table 6A.4

Table 6A.4 Police service expenditure, staff and asset descriptors, WA

	<i>Unit</i>	<i>2003-04</i>	<i>2004-05</i>	<i>2005-06</i>	<i>2006-07</i>	<i>2007-08</i>
Assets by value						
Land	\$'000	91 777	100 633	97 235	130 803	169 936
Buildings and fittings	\$'000	200 868	215 112	233 685	288 689	340 759
Other (h)	\$'000	93 128	122 361	156 116	173 268	181 612
Total value of assets	\$'000	385 773	438 106	487 036	592 760	692 307

- (a) WA does not pay payroll tax, however the 'notional' payroll tax rate for WA has been estimated based on 5.5 per cent of payroll costs.
- (b) Includes training costs (previously reported under salaries).
- (c) Depreciation based on the straight-line method of calculation. Data for 2007-08 include \$3.1 million in impairment expense.
- (d) User cost of capital on value of assets (excluding land).
- (e) Comprises salaries and payments in the nature of salary, other recurrent expenditure, and capital expenditure.
- (f) Comprises salaries and payments in the nature of salary, other recurrent expenditure, depreciation, and the user cost of capital.
- (g) Employees Indigenous status is provided on a voluntary basis.

Source: WA Government (unpublished); 2009 Report, table 6A.4.

Table 6A.5

Table 6A.5 **Police service expenditure, staff and asset descriptors, SA**

	<i>Unit</i>	<i>2003-04</i>	<i>2004-05</i>	<i>2005-06</i>	<i>2006-07</i>	<i>2007-08</i>
Expenditure						
Recurrent expenditure						
Salaries and payments in the nature of salaries						
Salaries and related payments (a)	\$m	281.4	325.9	342.0	361.2	400.7
Superannuation	\$m	34.4	40.2	47.8	48.1	51.3
Payroll tax	\$m	17.0	18.8	20.3	21.0	22.1
Total salaries and payments	\$m	332.8	384.9	410.2	430.3	474.1
Other recurrent expenditure (b)	\$m	86.3	86.2	95.4	101.2	106.7
Depreciation (c)	\$m	9.4	9.7	12.2	12.4	15.0
Total recurrent expenditure	\$m	428.5	480.8	517.7	543.9	595.8
Net recurrent expenditure						
Revenue from own sources (ROS) (d)	\$m	59.4	63.9	60.1	56.7	57.0
Total recurrent expenditure less ROS and payroll tax	\$m	352.0	398.1	437.3	466.2	516.7
Capital expenditure						
User cost of capital (e)	\$m	12.1	11.0	10.8	11.1	13.9
Capital expenditure (f)	\$m	9.7	11.5	9.0	15.5	13.7
Expenditure aggregates						
Total cash expenditure (g)	\$m	428.8	482.6	514.6	547.0	594.4
Total accrual costs	\$m	440.6	491.8	528.5	555.0	609.6
Staffing costs (h)						
Average police staff costs	\$	77 220	88 610	88 869	92 649	100 564
Average non-police staff costs	\$	46 838	45 346	51 121	53 433	49 412
Staff by Indigenous and operational status						
Operational FTE staff						
Sworn	FTE	3 641	3 725	3 862	3 842	3 986
Civilian	FTE	647	665	720	730	748
Other	FTE	30	26	30	28	27
Operational FTE staff	FTE	4 318	4 416	4 612	4 600	4 761
Non-operational FTE staff						
Sworn	FTE	69	76	113	127	130
Civilian	FTE	225	228	280	260	282
Other	FTE	86	141	83	153	160
Non-operational FTE staff	FTE	380	445	476	540	572
Total staff	FTE	4 698	4 861	5 088	5 140	5 333
Indigenous FTE staff						
Operational	FTE	57	55	59	59	58
Non-operational	FTE	6	2	–	3	5
Indigenous FTE staff	FTE	63	57	59	62	63

Table 6A.5

Table 6A.5 Police service expenditure, staff and asset descriptors, SA

	<i>Unit</i>	<i>2003-04</i>	<i>2004-05</i>	<i>2005-06</i>	<i>2006-07</i>	<i>2007-08</i>
Assets by value						
Land (i)	\$'000	23 002	36 705	33 260	33 574	54 334
Buildings and fittings (i)	\$'000	130 274	103 299	98 990	100 149	139 237
Other (j)	\$'000	20 820	34 228	35 564	38 633	34 046
Total value of assets	\$'000	174 096	174 232	167 814	172 356	227 617

- (a) The salary increase mainly reflects the Enterprise Bargaining Agreement, and higher employee benefits.
- (b) The increase in 2006-07 mainly reflects a \$2.4m increase due to the first full year impact of the Public Private Partnership agreement, and an increase in Computing expenses of \$3.8m from the previous year.
- (c) Depreciation based on the straight-line method of calculation.
- (d) Revenue from own sources for 2003-04 includes \$11.5 million Commonwealth revenue being reimbursement of the compensation and administrative expenses attributable to the South Australian handgun buyback program, which operated between 1 October 2003 and 31 March 2004, and \$14.9 million increase in funding from the Community Road Safety Fund. In 2004-05, the decrease in revenue mainly reflects one-off cost recovery from the Commonwealth (\$1.425 million) and contributed assets (Audio Management System - \$6.061million and Microsoft Core Licences - \$1.015 million). This is partly offset by increased interest revenue (\$0.694 million), grants and cost recoveries. The decrease in 2006-07 is mainly due to a change in policy (DTF no longer pay interest on balances held in Agencies bank accounts). In 2005-06, the interest received was \$3.4m.
- (e) User cost of capital on value of assets (excluding land).
- (f) For 2003-04, increased capital expenditure mainly reflects higher expenditure on major projects including \$1.5 million on Mobile Data Terminals, Counter Terrorism \$1.0 million, Police Call Centre \$0.3 million and Road Safety Project \$1.0 million.
- (g) Comprises salaries and payments in the nature of salary, other recurrent expenditure, and capital expenditure. The net cash flows used in investing activities for 2006-07 is mainly associated with the purchase of an aircraft and the Golden Grove and Aldinga police stations.
- (h) Comprises salaries and payments in the nature of salary, other recurrent expenditure, depreciation, and the user cost of capital.
- (i) Land revalued in 2005 resulting in a \$14.1million increment. For 2005-06, the decrease mainly reflects the transfer of land and buildings as part of the Public Private Partnership (PPP) transaction that occurred in 2004-05. Five police stations were built as part of this transaction. The transfer has been reflected in the 2005-06 financial statements as a prior adjustment to 2004-05. A revaluation of land, buildings and improvements was conducted during 2007-08.
- (j) The increase in 2006-07 is mainly associated with the purchase of the aircraft and donated assets (speed detection cameras).

Source: SA Government (unpublished); 2009 Report, table 6A.5.

Table 6A.6

Table 6A.6 **Police service expenditure, staff and asset descriptors, Tasmania**

	<i>Unit</i>	<i>2003-04</i>	<i>2004-05</i>	<i>2005-06</i>	<i>2006-07</i>	<i>2007-08</i>
Expenditure						
Recurrent expenditure						
Salaries and payments in the nature of salaries						
Salaries and related payments	\$m	80.2	89.3	99.8	107.6	114.2
Superannuation	\$m	8.9	9.0	10.5	11.6	12.3
Payroll tax	\$m	4.9	6.3	6.5	7.2	7.4
Total salaries and payments	\$m	93.9	104.6	116.8	126.4	133.9
Other recurrent expenditure	\$m	32.8	31.9	31.1	33.5	39.0
Depreciation	\$m	1.4	2.3	2.6	2.6	4.3
Total recurrent expenditure	\$m	128.1	138.8	150.5	162.5	177.2
Net recurrent expenditure						
Revenue from own sources (ROS)	\$m	8.7	8.4	9.0	9.1	19.3
Total recurrent expenditure less ROS and payroll tax	\$m	114.5	124.0	134.9	146.3	150.5
Capital expenditure						
User cost of capital (a)	\$m	6.0	6.7	6.7	9.9	10.1
Capital expenditure	\$m	3.0	1.0	2.5	1.1	1.0
Expenditure aggregates						
Total cash expenditure (b)	\$m	129.7	137.5	150.4	161.0	173.8
Total accrual costs (c)	\$m	134.1	145.4	157.1	172.4	187.2
Staffing costs						
Average police staff costs	\$	66 439	73 369	77 536	85 469	91 531
Average non-police staff costs	\$	53 992	57 843	66 441	60 969	59 644
Staff by Indigenous and operational status						
Operational FTE staff (d)						
Sworn	FTE	1 001	1 008	1 052	1 134	1 135
Civilian	FTE	216	218	221	241	240
Other	FTE	–	na	–	na	–
Operational FTE staff	FTE	1 217	1 226	1 273	1 375	1 375
Non-operational FTE staff						
Sworn	FTE	116	126	132	48	46
Civilian	FTE	149	152	155	141	146
Other	FTE	–	–	–	34	46
Non-operational FTE staff	FTE	265	278	287	223	238
Total staff	FTE	1 482	1 504	1 560	1 598	1 613
Indigenous FTE staff						
Operational	FTE	20	22	24	27	27
Non-operational	FTE	2	2	3	1	2
Indigenous FTE staff	FTE	22	24	27	28	29

Table 6A.6 **Police service expenditure, staff and asset descriptors, Tasmania**

	<i>Unit</i>	<i>2003-04</i>	<i>2004-05</i>	<i>2005-06</i>	<i>2006-07</i>	<i>2007-08</i>
Assets by value						
Land	\$'000	13 819	13 837	13 948	26 668	26 992
Buildings and fittings	\$'000	69 686	77 750	77 566	108 891	109 185
Other	\$'000	5 173	5 471	5 559	15 317	16 485
Total value of assets	\$'000	88 678	97 058	97 073	150 876	152 662

- (a) User cost of capital on value of assets (excluding land). Capital expenditure includes only capital appropriations.
- (b) Comprises salaries and payments in the nature of salary, other recurrent expenditure, and capital expenditure.
- (c) Comprises salaries and payments in the nature of salary, other recurrent expenditure, depreciation, and the user cost of capital.
- (d) The large increase in police numbers in 2006-07 is mainly due to two extra recruit (trainee) courses funded by the Government of Tasmania (in addition to the normal two courses) graduating during reporting period.

na Not available. – Nil or rounded to zero.

Source: Tasmanian Government (unpublished); 2009 Report, table 6A.6.

Table 6A.7

Table 6A.7 **Police service expenditure, staff and asset descriptors, ACT**

	<i>Unit</i>	<i>2003-04</i>	<i>2004-05</i>	<i>2005-06</i>	<i>2006-07</i>	<i>2007-08</i>
Expenditure						
Recurrent expenditure						
Salaries and payments in the nature of salaries						
Salaries and related payments	\$m	56.0	60.8	62.9	68.8	79.2
Superannuation	\$m	7.7	8.4	9.7	9.0	9.9
Payroll tax (a)	\$m	–	–	–	–	–
Total salaries and payments	\$m	63.7	69.3	72.6	77.8	89.0
Other recurrent expenditure	\$m	21.3	21.0	22.0	23.4	26.7
Depreciation	\$m	2.7	2.3	2.3	2.4	2.4
Total recurrent expenditure	\$m	87.7	92.6	96.9	103.6	118.1
Net recurrent expenditure						
Revenue from own sources (ROS)	\$m	0.4	0.5	0.3	0.5	1.4
Total recurrent expenditure less ROS and payroll tax (b)	\$m	87.3	92.1	96.6	103.1	116.7
Capital expenditure						
User cost of capital (c)	\$m	2.7	2.9	3.0	3.1	3.5
Capital expenditure	\$m	1.4	6.4	5.6	1.8	2.0
Expenditure aggregates						
Total cash expenditure (d)	\$m	86.4	96.7	100.2	103.0	117.6
Total accrual costs (e)	\$m	90.4	95.6	99.9	106.7	121.7
Staffing costs						
Average police staff costs	\$	78 680	86 434	89 192	93 261	101 108
Average non-police staff costs	\$	78 785	86 189	88 728	93 922	100 373
Staff by Indigenous and operational status						
Operational FTE staff						
Sworn	FTE	607	596	605	619	652
Civilian	FTE	122	110	93	92	98
Other	FTE	–	–	–	–	–
Operational FTE staff	FTE	729	706	698	711	750
Non-operational FTE staff						
Sworn	FTE	11	10	15	21	26
Civilian	FTE	69	86	102	101	106
Other	FTE	–	–	–	–	–
Non-operational FTE staff	FTE	80	96	117	122	132
Total staff	FTE	809	802	815	833	882
Indigenous FTE staff						
Operational	FTE	10	9	8	4	1
Non-operational	FTE	–	2	3	2	1
Indigenous FTE staff	FTE	10	11	11	6	2

Table 6A.7

Table 6A.7 Police service expenditure, staff and asset descriptors, ACT

	<i>Unit</i>	<i>2003-04</i>	<i>2004-05</i>	<i>2005-06</i>	<i>2006-07</i>	<i>2007-08</i>
Assets by value						
Land	\$'000	6 630	8 539	7 889	7 751	25 850
Buildings and fittings	\$'000	33 097	35 814	36 613	36 908	40 857
Other	\$'000	1 001	856	1 096	2 407	3 396
Total value of assets	\$'000	40 728	45 209	45 598	47 066	70 103

- (a) The Australian Federal Police (AFP) is exempt from paying payroll tax.
- (b) The ACT does not pay payroll tax, however a 'notional' payroll tax rate for the ACT has been estimated.
- (c) User cost of capital on value of assets (excluding land).
- (d) Comprises salaries and payments in the nature of salary, other recurrent expenditure, and capital expenditure.
- (e) Comprises salaries and payments in the nature of salary, other recurrent expenditure, depreciation, and the user cost of capital.
- Nil or rounded to zero.

Source: ACT Government (unpublished); 2009 Report, table 6A.7.

Table 6A.8

Table 6A.8 **Police service expenditure, staff and asset descriptors, NT**

	<i>Unit</i>	<i>2003-04</i>	<i>2004-05</i>	<i>2005-06</i>	<i>2006-07</i>	<i>2007-08 (a)</i>
Expenditure (b)						
Recurrent expenditure						
Salaries and payments in the nature of salaries						
Salaries and related payments	\$m	90.2	102.4	115.1	123.3	136.3
Superannuation (c)	\$m	9.7	10.7	11.8	12.6	13.3
Payroll tax	\$m	5.7	6.2	7.2	7.6	8.4
Total salaries and payments	\$m	105.6	119.4	134.1	143.5	157.9
Other recurrent expenditure	\$m	36.2	33.5	34.6	37.4	46.6
Depreciation (d)	\$m	4.6	5.8	5.9	6.4	7.0
Total recurrent expenditure	\$m	146.4	158.7	174.6	187.2	211.6
Net recurrent expenditure						
Revenue from own sources (ROS)	\$m	16.5	17.4	16.0	18.7	27.0
Total recurrent expenditure less ROS and payroll tax	\$m	124.2	135.1	151.4	160.9	176.2
Capital expenditure						
User cost of capital	\$m	8.2	8.8	8.3	8.6	9.1
Capital expenditure (e)	\$m	16.3	14.6	9.9	12.7	18.9
Expenditure aggregates						
Total cash expenditure (f)	\$m	158.1	167.5	178.6	193.6	223.4
Total accrual costs	\$m	154.6	167.5	182.9	195.8	220.7
Staffing costs						
Average police staff costs	\$	109 371	114 099	134 095	141 242	146 943
Average non-police staff costs	\$	33 328	35 000	32 356	34 584	39 614
Staff by Indigenous and operational status (g)						
Operational FTE staff						
Sworn	FTE	809	756	833	856	904
Civilian	FTE	141	51	144	161	209
Other (h)	FTE	175	169	194	203	216
Operational FTE staff	FTE	1 125	976	1 171	1 220	1 329
Non-operational FTE staff						
Sworn	FTE	37	160	44	38	27
Civilian	FTE	77	183	91	77	50
Other (h)	FTE	–	21	80	56	58
Non-operational FTE staff	FTE	114	364	215	171	135
Total staff	FTE	1 239	1 340	1 386	1 391	1 464
Indigenous FTE staff						
Operational	FTE	57	66	71	84	115
Non-operational	FTE	7	10	10	12	2
Indigenous FTE staff	FTE	64	76	81	96	117

Table 6A.8

Table 6A.8 Police service expenditure, staff and asset descriptors, NT

	<i>Unit</i>	<i>2003-04</i>	<i>2004-05</i>	<i>2005-06</i>	<i>2006-07</i>	<i>2007-08 (a)</i>
Assets by value						
Land	\$'000	5 506	5 503	6 192	6 202	6 202
Buildings and fittings	\$'000	80 322	82 466	79 968	79 605	83 075
Other	\$'000	21 728	27 314	24 377	28 043	30 947
Total value of assets	\$'000	107 556	115 283	110 537	113 850	120 224

- (a) The NT Police are part of a tri-service agency incorporating the NT Fire and Rescue Service and the NT Emergency Service. Where possible, all expenditure directly relating to the non-police arms of the department has been excluded.
- (b) Based on actuarial advice on the cost of the schemes, not actuals.
- (c) Depreciation is calculated using a straight-line method.
- (d) 2004-05 and 2005-06 figures have been revised since the 2007 Report to exclude non capitalised repairs and maintenance expenditure, which is captured in recurrent expenditure.
- (e) Comprises salaries and payments in the nature of salary, other recurrent expenditure, and capital expenditure.
- (f) Comprises salaries and payments in the nature of salary, other recurrent expenditure, depreciation, and the user cost of capital.
- (g) Prior to 2006-07 constable recruits were counted as sworn. From 2006-07 constable recruits are counted as other staff. Staff data for 2007-08 have been calculated on a headcount basis not FTE. Staff data for earlier years are FTE.
- (h) Includes police auxiliaries and Aboriginal community police officers.
– Nil or rounded to zero.

Source: NT Government (unpublished); 2009 Report, table 6A.8.

Table 6A.9

Table 6A.9 **Indigenous, sworn and unsworn police staff (a)**

		<i>Unit NSW (b)</i>	<i>Vic</i>	<i>Qld (b)</i>	<i>WA</i>	<i>SA</i>	<i>Tas</i>	<i>ACT</i>	<i>NT</i>
Indigenous staff as proportion of total staff (c)									
2003-04	%	1.0	0.1	na	2.9	1.3	1.5	1.2	5.2
2004-05	%	1.2	na	na	3.1	1.2	1.6	1.4	5.7
2005-06	%	1.3	na	na	2.9	1.2	1.7	1.3	5.8
2006-07	%	1.4	na	2.4	2.5	1.2	1.8	0.7	6.9
2007-08	%	1.5	na	2.4	2.1	1.2	1.8	0.2	8.0
Representation of Indigenous people among all people aged 20–64 (30 June 2007)									
Indigenous people	no.	72 769	16 211	69 555	37 047	14 568	9 184	2 288	32 719
All people	000	4 148.2	3 167.9	2 532.5	1 289.6	949.6	289.8	218.7	136.5
Proportion Indigenous	%	1.8	0.5	2.7	2.9	1.5	3.2	1.0	24.0

(a) Indigenous staff numbers relate to those staff who self-identify as being of Aboriginal or Torres Strait Islander descent.

(b) In NSW, Indigenous staff for all years cannot be split between operational and non-operational, numbers listed as 'Operational Indigenous FTE staff' are in fact total Indigenous staff numbers. Queensland Police Service was unable to validate Indigenous staff by operational status prior to 2006-07.

(c) Indigenous staff are reported as the sum of both the operational and non-operational categories.

na Not available.

Source: State and Territory governments (unpublished); ABS *Experimental Estimates and Projections, Indigenous Australians* (low series), Cat. no. 3238.0; ABS *Australian Demographic Statistics*, Cat. no. 3101.0 (unpublished); 2009 Report, table 6A.19.

Table 6A.10

Table 6A.10 **Number of deaths in police custody and custody-related operations, 2003 to 2007 (a), (b)**

Year	NSW	Vic	Qld	WA	SA	Tas	ACT	NT	Aust
Non-Indigenous deaths in police custody and custody-related operations									
2003	11	4	7	3	2	–	1	–	28
2004	9	4	5	2	2	–	1	–	23
2005	3	5	6	–	1	–	–	–	15
2006	8	3	1	2	1	–	1	–	16
2007	5	7	3	4	4	–	–	2	26
Indigenous deaths in police custody and custody-related operations									
2003	1	–	2	4	–	–	–	1	8
2004	2	1	2	1	1	–	–	1	8
2005	1	–	1	6	–	–	–	–	8
2006	–	1	1	2	1	–	–	1	6
2007	–	–	2	–	2	–	–	–	4
Total deaths in police custody and custody-related operations									
2003	12	4	9	7	2	–	1	1	36
2004	11	5	7	3	3	–	1	1	31
2005	4	5	7	6	1	–	–	–	23
2006	8	4	2	4	2	–	1	1	22
2007	5	7	5	4	6	–	–	2	30
Total number of deaths 2003 to 2007									
Non-Indigenous	36	23	22	11	10	–	3	2	108
Indigenous	4	2	8	13	4	–	–	3	34
All people	40	25	30	24	14	–	3	5	142

(a) Deaths in police custody include deaths in institutional settings (for example, police stations/lockups and police vehicles) or during transfer to or from such an institution; or deaths in hospitals following transfer from an institution; and other deaths in police operations where officers are in close contact with the deceased (for example, most raids and shootings by police). Deaths in custody-related operations include situations where officers did not have such close contact with the person as to be able to significantly influence or control the person's behaviour (for example, most sieges and most cases where officers were attempting to detain a person, such as pursuits).

(b) The AIC deaths in police custody and custody-related operations for 2007 are preliminary (unpublished) and final data in other publications might differ.

– Nil or rounded to zero.

Source: ABS (2008), Australian Demographic Statistics, December Quarter 2007, Cat. no. 3101.0; ABS (unpublished), derived from Australian Demographic Statistics, December Quarter 2007, Cat. no. 3101.0; ABS (2004), *Experimental Estimates and Projections, Aboriginal and Torres Strait Islanders*, Cat. no. 3238.0; Australian Institute of Criminology (various years), *Australian Deaths in Custody and Custody-related Police Operations*, AIC, Canberra; Australian Institute of Criminology (unpublished); 2009 Report, table 6A.43.