
A Statistical appendix

This appendix contains contextual information to assist the interpretation of the performance indicators presented in the Report. It also contains a discussion of the statistical concept of age standardisation and its application to Indigenous and all people's use of aged care services.

Most of the service areas covered by the *Report on Government Services 2009* (2009 Report) use population data from tables AA.1 and AA.2 (in the 2009 Report) for descriptive information (such as expenditure per person in the population) or performance indicators (such as participation rates for vocational education and training [VET]).

Indigenous data in the statistical appendix

The statistical appendix in the 2009 Report contains the following data items on Indigenous people:

- persons by country of birth, August 2006 ('000)
- population profile, 30 June 2006
- proportion with weekly income of \$249 or less, August 2006
- proportion who had completed year 12 or equivalent, August 2006
- proportion who had attended higher education, August 2006
- crude and age standardised imprisonment rates, 2007-08
- deaths, main causes and standardised mortality ratios, 2001–2005.

Attachment tables

Attachment tables for data within the statistical appendix of this compendium are contained in attachment A of the compendium. These tables are identified in references throughout this chapter by an 'AA' suffix (for example, table AA.3 is table 3 in the statistical appendix attachment). As the data are directly sourced from the 2009 Report, the compendium also notes where the original table, figure or text in the 2009 Report can be found. For example, where the compendium refers to '2009 Report, p. A.15' this is page 15 of the statistical appendix of the 2009 Report,

and '2009 Report, table AA.2' is attachment table 2 of the statistical appendix attachment of the 2009 Report.

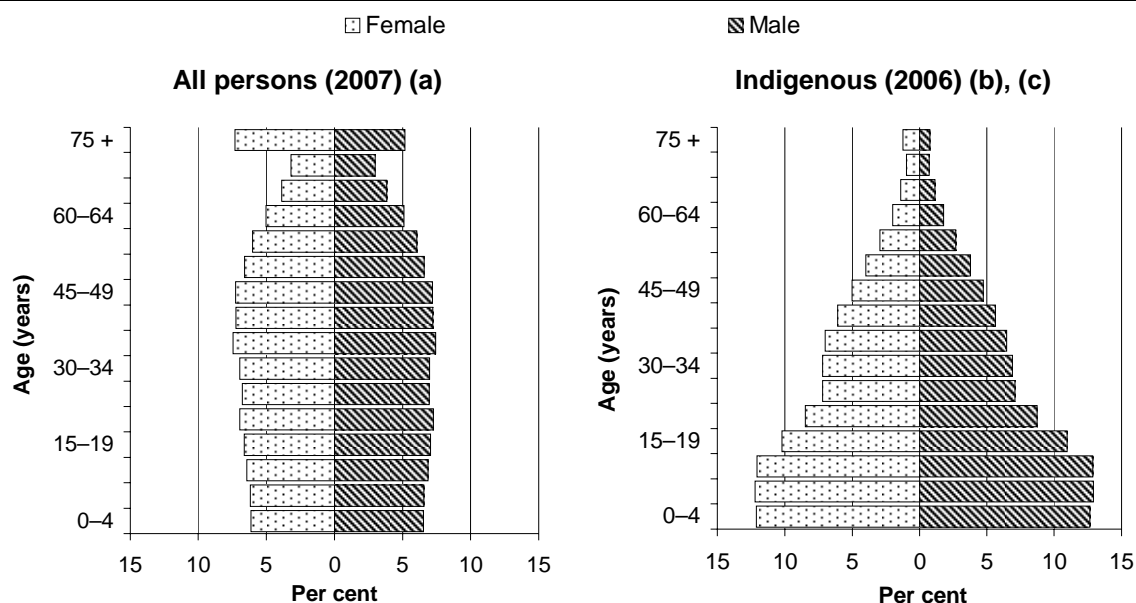
Population

More than three quarters of Australia's 21.0 million people lived in the eastern mainland states as at 30 June 2007, with NSW, Victoria and Queensland accounting for 32.8 per cent, 24.8 per cent and 19.9 per cent, respectively, of the nation's population. Western Australia and SA accounted for a further 10.0 per cent and 7.5 per cent, respectively, of the population, while Tasmania, the ACT and the NT accounted for the remaining 2.3 per cent, 1.6 per cent and 1.0 per cent, respectively (2009 Report, table AA.1).

As in most other developed economies, greater life expectancy and declining fertility have contributed to an 'ageing' of Australia's population. However, the age distribution of Indigenous Australians is markedly different (figure A.1). At 30 June 2007, 9.3 per cent of Australia's population was aged 70 years or over, in contrast to 1.8 per cent of Australia's Indigenous population, as at 30 June 2006 (tables AA.3 and 2009 Report, tables AA.1). Across jurisdictions, the proportion of all people aged 70 years or over ranged from 11.1 per cent in SA to 2.7 per cent in the NT (2009 Report, tables AA.1).

Half of the population at June 2007 was female (50.3 per cent). This distribution was similar across all jurisdictions except the NT, which had a lower representation of women in its population (48.1 per cent) (2009 Report, table AA.1). The proportion of women in the population varies noticeably by age. Nationally, approximately 56.5 per cent of people aged 70 or over were female, compared with 48.7 per cent of people aged 14 years or younger (2009 Report, table AA.1).

Figure A.1 Population distribution, Australia, by age and sex, 30 June



a Totals may not add as a result of rounding. **b** Includes other territories. **c** Experimental estimates at 30 June 2006 are preliminary rebased estimates and are based on the 2006 Census of Population and Housing.

Source: ABS (2008), Population by Age and Sex, Australian States and Territories, June 2002-2007, Cat. no. 3201.0; ABS (2007), Australian Demographic Statistics, March Quarter 2007, Cat. no. 3101.0; table AA3 and 2009 Report, table AA.1; 2009 Report, figure A.1, p. A.3.

Population, by ethnicity and proficiency in English

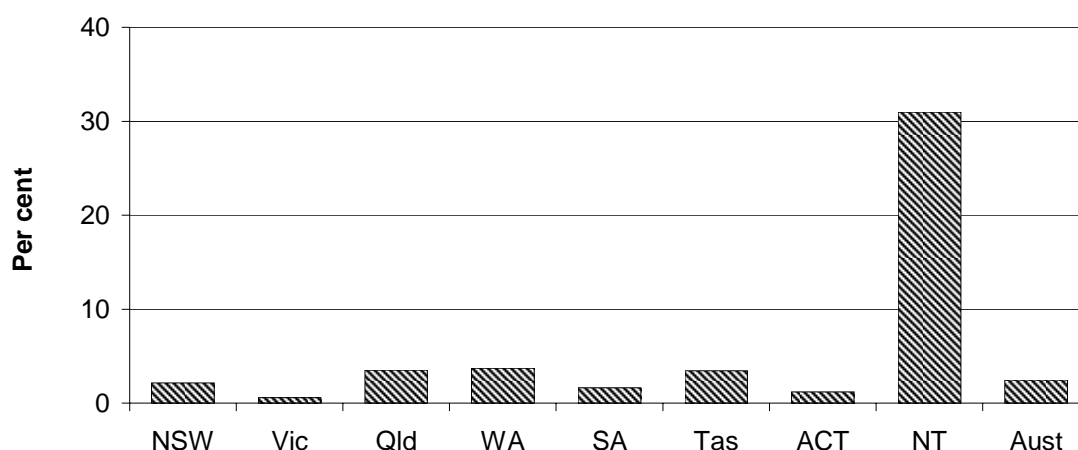
The most and least common languages other than English spoken in people's homes varied across jurisdictions in August 2006. The most extreme variation was in the NT, where 15.1 per cent of people spoke an Australian Indigenous language (65.3 per cent of the total persons in the NT who spoke a language other than English in their homes) (table AA.2).

Indigenous population profile

There were an estimated 517 174 Indigenous people (259 693 female and 257 481 male) in Australia at 30 June 2006, accounting for approximately 2.5 per cent of the total population (table AA.3 and 2009 Report, table AA.2). The proportion of people who were Indigenous was significantly higher in the NT (31.0 per cent) than in any other jurisdiction. Across the other jurisdictions, the proportion ranged from 3.7 per cent in WA to 0.6 per cent in Victoria (figure A.2). Nationally, the Indigenous population is projected to grow to 528 645 people in 2009 (table AA.4).

The majority of Indigenous people (81.8 per cent) at August 2006 spoke only English at home, while a further 9.0 per cent spoke an Indigenous language and English very well or well. However, 2.2 per cent spoke English not well or not at all (up to 12.2 per cent in the NT). Nationally, 5.2 per cent of Indigenous people did not state their language proficiency (table AA.5).

Figure A.2 **Indigenous people as a proportion of the population, 30 June^a,
b, c**



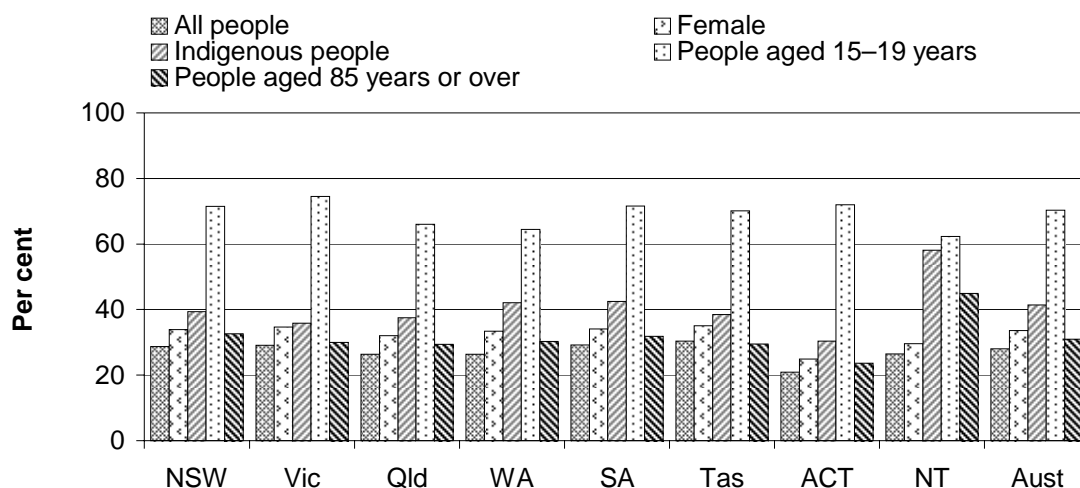
a 'Australia' includes other territories. **b** Experimental estimates of the Australian Indigenous population at 30 June 2006 are preliminary rebased estimates and are based on the *2006 Census of Population and Housing*. **c** The estimated resident population at 30 June 2007 is preliminary.

Source: ABS (2008), *Australian Demographic Statistics, December Quarter 2007*, Cat. no. 3101.0; ABS (2007), *Australian Demographic Statistics, March Quarter 2007*, Cat. no. 3101.0; table AA.3 and 2009 Report, table AA.2; 2009 Report, figure A.5, p. A.7.

Income

Nationally, 28.0 per cent of people aged 15 years or over in August 2006 had a relatively low weekly individual income of \$249 or less (2009 Report, table AA.16). The proportion was considerably higher for younger people (70.3 per cent for people aged 15–19 years), Indigenous people (41.4 per cent), females (33.5 per cent) but similar for older people (30.9 per cent for people aged 85 years or over) (figure A.3).

Figure A.3 **Weekly individual income of \$249 or less, by sex, Indigenous status and age, August 2006^a**



^a 'Australia' includes other territories.

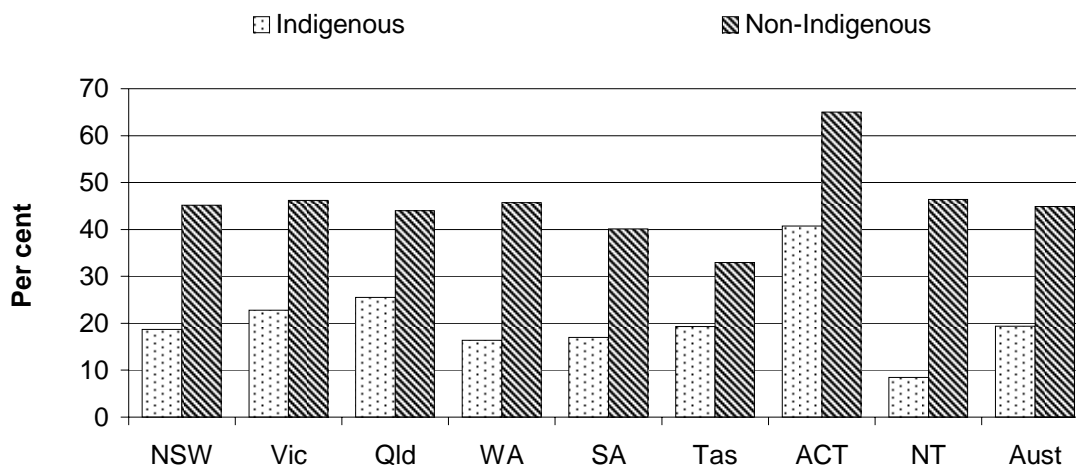
Source: ABS (2007), 2006 Census of Population and Housing, Cat. no. 2068.0; ABS (unpublished), derived from 2006 Census of Population and Housing; table AA.7 and 2009 Report, tables AA.16 and AA.18; 2009 Report, figure A.8, p. A.10.

Educational attainment

Employment outcomes and income are closely linked to the education and skill levels of individuals. At August 2006, 42.2 per cent of people aged 15 years and over (approximately 6.7 million people) had completed year 12 or equivalent. A further 22.9 per cent (3.6 million people) had a highest level of schooling of year 10 or equivalent. Across jurisdictions, the proportion of people aged 15 years and over who had year 12 or equivalent schooling ranged from 62.1 per cent in the ACT to 31.3 per cent in Tasmania (2009 Report, figure A.10).

At August 2006, a much higher proportion of non-Indigenous people (44.9 per cent) aged 15 years or over had completed year 12 or equivalent as their highest year of school (this is the highest level of primary or secondary school a person has completed) than Indigenous people (19.4 per cent). Across jurisdictions, the proportion of Indigenous people aged 15 years or over who had completed year 12 or equivalent schooling ranged from 40.7 per cent in the ACT to 8.5 per cent in the NT. The proportion of non-Indigenous people who had completed year 12 or equivalent schooling was highest in the ACT (65.0 per cent) and lowest in Tasmania (33.0 per cent) (figure A.4).

Figure A.4 People aged 15 years or over who had completed year 12 or equivalent as highest year of school, by Indigenous status, August 2006^a

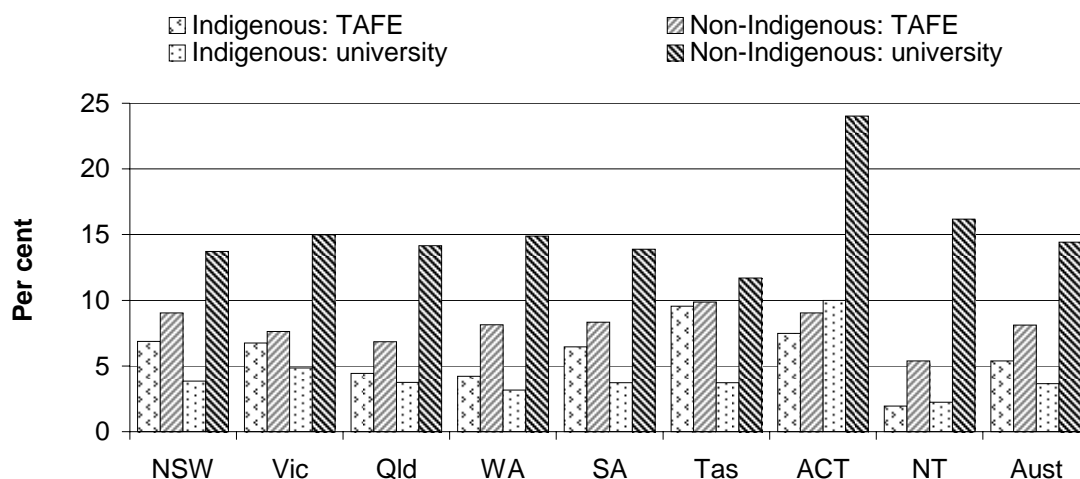


^a 'Australia' includes other territories.

Source: ABS (2007), derived from 2006 Census of Population and Housing, Cat. no. 2068.0; table AA.8; 2009 Report, figure A.11, p. A.13.

In August 2006, the proportion of the Indigenous tertiary students who were attending TAFE was highest in Tasmania (9.5 per cent) and lowest in the NT (2.0 per cent). At August 2006, the proportion of non-Indigenous students (14.4 per cent) attending university was considerably higher than the proportion of Indigenous students (3.7 per cent). Across jurisdictions, the proportion of non-Indigenous students attending university ranged from 24.0 per cent in the ACT to 11.7 per cent in Tasmania. For Indigenous students the proportion ranged from 10.0 per cent in the ACT to 2.2 per cent in the NT (figure A.5).

Figure A.5 **Proportion of students attending tertiary education institutions, by Indigenous status, August 2006^{a, b, c}**



^a 'Australia' includes other territories. ^b Includes 'technical and further educational institution (including TAFE colleges)'. ^c Totals may not add as a result of rounding.

Source: ABS (2007), *2006 Census of Population and Housing*, Cat. no. 2068.0; table AA.9; 2009 Report, figure A.13, p. A.14.

Statistical concepts used in the Report — age standardisation of data

Rationale for age standardisation of data

The age profile of Australians varies across jurisdictions, periods of time, geographic areas and/or population sub-groups (for example, between Indigenous and non-Indigenous populations). Variations in age profiles are important because they can affect the likelihood of using a particular service (such as a public hospital) or particular 'events' occurring (such as death, incidence of disease or incarceration). Using 'crude' (or unadjusted) rates across populations with different age profiles can lead to drawing erroneous conclusions about variables that are correlated with age. Age standardisation adjusts for the effect of variations in age profiles when comparing service usage, or rates, of particular events across different populations.

Calculating age standardised rates

Age standardisation adjusts each of the comparison/study populations (for example, Indigenous or non-Indigenous) against a standard population (box A.1). The standard population generally used is the final 30 June estimated Australian resident

total population for the most recent year ending in ‘1’ (for example, 1991 and 2001) (AIHW 2008). The result is a standardised estimate for each of the comparison/study populations.

The Review generally reports age-standardised rates that have been calculated using either one of two methods, as appropriate. The direct method is generally used for comparisons between study groups. The indirect method is recommended when the age-specific rates for the population being studied are not known (or are unreliable), but the total number of events is known (AIHW 2008).

- The *direct method* has three steps:

Step 1: Calculate the age-specific rate for each age group for the study/comparison group.

Step 2: Calculate the expected number of ‘events’ in each age group by multiplying the age-specific rates by the corresponding standard population.

Step 3: Sum the expected number of cases in each age group and divide by the total of the standard population (box A.1, equation A.1).

- The *indirect method* has four steps:

Step 1: Calculate the age-specific rates for each age group in the standard population.

Step 2: Apply the age-specific rates resulting from step 1 to the number in each age group of the study population and sum to derive the total ‘expected’ number of cases for the study population.

Step 3: Divide the observed number of events in the study population by the ‘expected’ number of cases for the study population derived in step 2.

Step 4: Multiply the result of step 3 by the crude rate in the standard population (box A.1, equation A.2.)

Box A.1 Technical concepts and formulas — direct and indirect age standardisation

The formula for deriving the age standardised rate using the direct method is:

$$SR = \frac{\sum(r_i P_i)}{\sum P_i} \quad (\text{equation A.1})$$

The formula for deriving the age standardised rate using the indirect method is:

$$SR = \frac{C}{\sum(R_i p_i)} \times R \quad (\text{equation A.2})$$

The formula for deriving the age standardised ratio using the indirect method is:

$$SR_a = \frac{C}{\sum(R_i p_i)} \quad (\text{equation A.3})$$

Where:

SR is the age-standardised rate for the population being studied

SR_a is the standardised ratio for the population being studied

r_i is the age-group specific rate for age group i in the population being studied

P_i is the population of age group i in the standard population

C is the observed number of events in the population being studied

$\sum(R_i p_i)$ is the expected number of events in the population being studied

R_i is the age-group specific rate for age group i in the standard population

p_i is the population for age group i in the population being studied

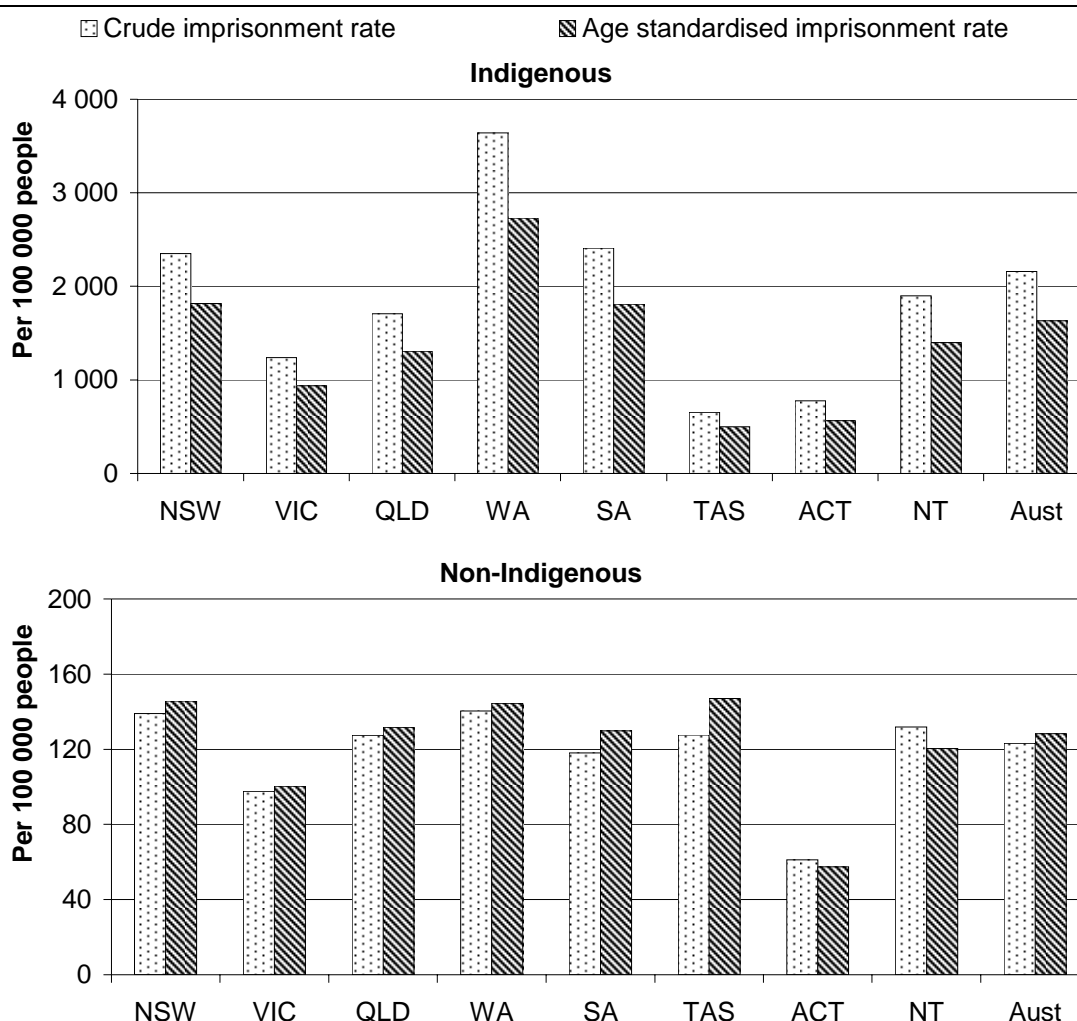
R is the crude rate in the standard population.

Source: AIHW (2008).

Tables AA.12 and AA.13 in the attachment contain examples of the application of direct and indirect age standardisation, respectively. Standardised rates are generally multiplied by 1000 or 100 000 to avoid small decimal fractions. They are then reported as age standardised rates per 1000 or 100 000 population (AIHW 2008).

Figure A.6 compares crude imprisonment rates and imprisonment rates standardised against the age profile of the total Australian prisoner population for Indigenous and non-Indigenous people.

Figure A.6 **Indigenous and non-Indigenous crude and age standardised imprisonment rates, 2007-08^{a, b}**



^a For detailed notes relating to these figures, please see table 8A.3. ^b Rates are based on the indirect standardisation method, applying age-group imprisonment rates derived from Prison Census data.

Source: ABS (unpublished), derived from Australian Demographic Statistics, December Quarter 2007, Cat. no. 3101.0; ABS (unpublished), derived from Experimental Projections Aboriginal and Torres Strait Islander Population, Cat. no. 3231.0; ABS (unpublished), derived from Prisoners in Australia, Cat. no. 4517.0; State and Territory governments (unpublished); table 8A.3; table AA.13; 2009 Report, figure A.17, p. A.29.

Calculating age standardised ratios

A variation of the *indirect method* is used to calculate age standardised ratios (box A.1). These ratios express the overall experience of a study population in terms of a standard population, where the standard population is the population to which the study population is being compared.

Application of age standardised ratios

Standardised Mortality Ratios (SMRs) have been used to compare death rates between the Indigenous and non-Indigenous populations (table A.1). The SMR is the ratio between the observed number of deaths in the Indigenous population and the expected number of deaths that would have occurred if the Indigenous population experienced the same age-specific death rates as the non-Indigenous population. If the SMR is greater than 1.0, there were more deaths than expected; if the ratio is less than 1.0, there were fewer deaths than expected (ABS and AIHW 2008).

Table A.1 Indigenous deaths, main causes and standardised mortality ratios, 2001–2005^{a, b}

	Male			Female		
	Observed	Expected	SMR	Observed	Expected	SMR
Diseases of the circulatory system	1 150	360	3.2	856	320	2.7
External causes	851	292	2.9	369	105	3.5
Neoplasms	592	406	1.5	547	351	1.6
Endocrine, nutritional and metabolic diseases	315	42	7.5	367	36	10.1
Diabetes	281	26	10.8	319	22	14.5
Diseases of the respiratory system	378	88	4.3	281	77	3.6
Diseases of the digestive system	251	43	5.8	182	36	5.1
Symptoms, signs and abnormal clinical and laboratory findings, not elsewhere classified	169	28	6.0	85	19	4.6
Certain conditions originating in the perinatal period	126	44	2.9	82	36	2.3
Diseases of the genitourinary system	79	16	4.8	119	20	6.0
Diseases of the nervous system	122	42	2.9	69	44	1.6
Certain infectious and parasitic diseases	102	20	5.1	72	14	5.0
Mental and behavioural disorders	101	17	5.8	72	23	3.1
All causes	4329	1438	3.0	3215	1123	2.9

SMR = Standardised Mortality Ratio. ^a Data for Qld, WA, SA and NT combined. Deaths are based on year of registration of death. Disease groupings are based on ICD-10 chapter. ^b Standardised mortality ratio is the observed Indigenous deaths divided by expected Indigenous deaths, based on the age, sex and cause-specific rates for non-Indigenous persons.

Source: ABS and AIHW (2008), *Health and Welfare of Australia's Aboriginal and Torres Strait Islander Peoples*, Cat. no. 4704.0, Canberra; 2009 Report, table A.3, p. A.31.

Attachment tables

Attachment tables for data within this chapter are contained in the attachment to the compendium. These tables are identified in references throughout this chapter by an 'AA' suffix (for example, table AA.3 is table 3 in the statistic appendix attachment). The tables included in the attachment are listed below.

Population

- Table AA.1** Persons by country of birth, August 2006 ('000)
- Table AA.2** Persons by language spoken at home, August 2006 ('000)
- Table AA.3** Experimental estimated resident Australian Indigenous population, 30 June 2006
- Table AA.4** Experimental projection of the Indigenous population, 2000 to 2009 (number)
- Table AA.5** Language spoken at home by Indigenous people and proficiency in spoken English, by sex, August 2006 (number)

Family and household

- Table AA.6** Families and persons in families in occupied private dwellings by Indigenous status and family/household composition, August 2006

Income, education and employment

- Table AA.7** Persons aged 15 years and over by weekly individual income and Indigenous status, August 2006
- Table AA.8** People aged 15 years or over, by highest year of school completed and Indigenous status, August 2006 ('000)
- Table AA.9** Type of educational institution attending by Indigenous status, August 2006 ('000)

General economic indicators

- Table AA.10** Gross State Product, 2002-03 to 2006-07, (2006-07 dollars)
- Table AA.11** Gross Domestic Product price deflator (index)

Statistical concepts

- Table AA.12** Age standardisation of data using the direct method
- Table AA.13** Age standardisation of data using the indirect method

References

ABS and AIHW 2008, *Health and Welfare of Australia's Aboriginal and Torres Strait Islander Peoples*, Cat. no. 4704.0, Canberra.

AIHW 2008, Age-standardised rate, METeOR, <http://meteor.aihw.gov.au/content/index.phtml/itemId/327276>, accessed 10 September 2008.

AA Statistical appendix

Attachment contents

Population

- Table AA.1** Persons by country of birth, August 2006 ('000)
- Table AA.2** Persons by language spoken at home, August 2006 ('000)
- Table AA.3** Experimental estimated resident Australian Indigenous population, 30 June 2006
- Table AA.4** Experimental projection of the Indigenous population, 2000 to 2009 (number)
- Table AA.5** Language spoken at home by Indigenous people and proficiency in spoken English, by sex, August 2006 (number)

Family and household

- Table AA.6** Families and persons in families in occupied private dwellings by Indigenous status and family/household composition, August 2006

Income, education and employment

- Table AA.7** Persons aged 15 years and over by weekly individual income and Indigenous status, August 2006
- Table AA.8** People aged 15 years or over, by highest year of school completed and Indigenous status, August 2006 ('000)
- Table AA.9** Type of educational institution attending by Indigenous status, August 2006 ('000)

General economic indicators

- Table AA.10** Gross State Product, 2002-03 to 2006-07, (2006-07 dollars)
- Table AA.11** Gross Domestic Product price deflator (index)

Statistical concepts

- Table AA.12** Age standardisation of data using the direct method
- Table AA.13** Age standardisation of data using the indirect method

Population

Table AA.1

Table AA.1 Persons by country of birth, August 2006 ('000)

	NSW	Vic	Qld	WA	SA	Tas	ACT	NT	Aust (a)
Born in Australia									
Indigenous									
Aboriginal	124.4	25.6	94.6	53.9	22.9	14.3	3.5	50.8	390.2
Torres Strait Islander	4.0	1.8	17.5	1.0	0.9	1.2	0.2	0.6	27.1
Both Aboriginal and Torres Strait Islander	2.8	0.8	10.1	1.0	0.4	0.6	0.1	1.3	17.1
Total	131.2	28.1	122.3	55.8	24.3	16.1	3.7	52.7	434.4
Non-Indigenous	4 328.9	3 360.1	2 777.5	1 207.2	1 081.9	374.4	230.6	94.0	13 456.0
Not stated	61.1	46.3	35.5	16.2	13.9	6.2	2.1	1.5	182.6
Total born in Australia	4 521.2	3 434.5	2 935.3	1 279.2	1 120.1	396.7	236.5	148.2	14 072.9
Born overseas									
Other main English speaking countries									
Canada	10.2	6.2	7.4	4.1	1.9	0.6	0.9	0.3	31.6
Ireland	17.3	11.5	7.7	9.0	3.2	0.6	0.7	0.3	50.3
New Zealand	106.6	64.0	148.8	47.3	11.4	4.2	3.9	3.3	389.5
South Africa	32.9	19.3	22.7	22.0	4.5	1.1	1.1	0.5	104.1
United Kingdom (b)	265.9	204.8	193.1	208.4	121.0	22.6	16.1	6.2	1 038.2
United States of America	21.8	13.3	12.2	6.7	3.4	1.2	2.0	1.1	61.7
Total Other main English speaking countries	454.6	319.2	391.8	297.6	145.4	30.2	24.7	11.6	1 675.3
Other countries									
China (excludes SARs and Taiwan Province) (c)	114.0	56.6	15.1	8.0	8.1	1.0	3.5	0.3	206.6
Croatia	18.5	18.2	3.9	5.2	3.5	0.3	1.5	–	51.0
Egypt	17.2	11.6	1.8	1.5	1.0	0.1	0.2	0.1	33.5
Fiji	28.6	7.9	8.9	0.7	0.9	0.3	0.7	0.2	48.1
Former Yugoslav Republic of Macedonia (FYROM)	17.7	18.3	0.9	3.0	0.4	–	0.4	–	40.7
France	7.0	4.4	3.9	1.9	1.1	0.2	0.4	0.2	19.2
Germany	31.1	28.1	20.1	9.9	12.0	2.1	2.4	0.9	106.5
Greece	35.1	54.3	4.1	3.0	10.8	0.6	1.2	0.9	110.0

Table AA.1

Table AA.1 Persons by country of birth, August 2006 ('000)

	NSW	Vic	Qld	WA	SA	Tas	ACT	NT	Aust (a)
Hong Kong (SAR of China) (c)	38.3	17.4	7.8	4.1	2.4	0.3	1.2	0.2	71.8
India	57.2	52.9	11.0	15.2	6.8	0.8	2.7	0.6	147.1
Indonesia	21.9	12.6	5.3	7.9	1.5	0.2	0.8	0.8	51.0
Italy	55.2	82.9	14.0	20.9	22.5	1.0	2.2	0.4	199.1
Korea, Republic of (South)	33.2	6.3	7.6	2.2	2.0	0.4	0.9	0.1	52.8
Lebanon	55.8	14.9	1.3	0.9	1.5	0.1	0.4	–	74.9
Macau (SAR of China) (c)	1.1	0.6	0.2	0.1	–	–	–	–	2.0
Malaysia	23.4	30.5	9.6	19.7	5.3	1.0	1.8	0.6	92.3
Malta	17.0	20.8	2.8	1.0	1.6	0.1	0.3	0.1	43.7
Netherlands	18.8	22.8	15.3	10.1	7.8	2.4	1.2	0.5	78.9
Philippines	57.7	27.3	18.7	6.8	5.4	1.0	1.7	1.9	120.5
Poland	15.2	18.1	5.1	5.7	6.2	0.7	1.1	0.1	52.3
Singapore	9.7	10.5	4.9	11.8	1.8	0.3	0.7	0.3	40.0
Sri Lanka	19.1	31.5	4.8	3.3	1.5	0.2	1.6	0.3	62.3
Turkey	12.5	15.3	1.1	0.8	0.6	–	0.2	–	30.5
Viet Nam	63.8	58.9	13.1	10.5	10.5	0.1	2.4	0.6	159.9
Montenegro	0.2	0.4	0.1	0.1	–	–	–	–	0.8
Serbia (d)	6.1	6.7	1.4	1.2	1.4	0.1	0.5	–	17.3
South Eastern Europe, nfd (e)	11.8	11.2	3.9	2.9	2.7	0.2	0.5	0.1	33.4
Other Overseas (f)	314.1	213.1	120.9	75.8	42.8	6.7	15.2	5.9	794.4
Total other countries	1 101.1	854.0	307.5	234.1	162.2	20.2	45.7	14.8	2 740.5
Total Born Overseas	1 555.8	1 173.2	699.4	531.7	307.7	50.5	70.4	26.5	4 415.8
Australian External Territories (g)	0.1	–	0.1	–	–	–	–	–	0.2
Not stated	472.2	324.7	269.8	148.1	86.6	29.3	17.2	18.2	1 366.3
Total	6 549.2	4 932.4	3 904.5	1 959.1	1 514.3	476.5	324.0	192.9	19 855.3

(a) Includes other territories.

(b) Comprises 'United Kingdom, nfd', 'Channel Islands', 'England', 'Isle of Man', 'Northern Ireland', 'Scotland' and 'Wales'.

Table AA.1

Table AA.1 Persons by country of birth, August 2006 ('000)

	NSW	Vic	Qld	WA	SA	Tas	ACT	NT	Aust (a)
--	-----	-----	-----	----	----	-----	-----	----	----------

(c) Special Administrative Regions (SARs) comprise 'Hong Kong (SAR of China)' and 'Macau (SAR of China)'.
 (d) There is an issue regarding Serbian Census data which relates to changes in the official country name and regional alliances. This affects 2006 Census data and has clouded a meaningful picture of the Serbian country of birth data (see ABS, *Census Dictionary*, 2006, Cat. no. 2901.0 [Reissue]).
 (e) Includes persons who stated their birthplace as Yugoslavia.
 (f) Includes countries not identified individually, 'Inadequately described', 'At sea' and 'Not elsewhere classified'.
 (g) Includes Australia (includes External Territories) nfd, Australian External Territories, nec & Norfolk Island.
 – Nil or rounded to zero. **nfd** Not further defined. **nec** Not elsewhere classified.
 Source: ABS (unpublished), derived from 2006 *Census of Population and Housing*; 2009 Report, table AA.4.

Table AA.2

Table AA.2 Persons by language spoken at home, August 2006 ('000) (a)

	NSW	Vic	Q/d	WA	SA	Tas	ACT	NT	Aust (b)
Speaks English only	4 846.7	3 668.3	3 371.7	1 603.0	1 262.8	438.2	262.5	127.3	15 581.3
Speaks other language									
Arabic	165.0	55.9	7.3	7.7	5.4	0.7	1.4	0.3	243.7
Indigenous languages	1.9	1.1	12.0	8.0	3.2	0.1	0.1	29.2	55.7
Chinese languages (c)	243.6	144.8	46.6	35.7	18.4	2.1	6.9	2.0	500.5
Croatian	23.6	23.0	4.4	6.1	3.8	0.3	2.5	-	63.6
Dutch	8.7	9.6	7.7	5.3	3.1	1.0	0.6	0.2	36.2
Filipino (excludes Tagalog) (d)	18.3	10.7	5.0	2.0	1.7	0.2	0.5	0.7	39.1
French	15.2	11.9	7.5	5.0	1.8	0.5	1.0	0.3	43.2
German	22.1	19.6	14.7	7.2	8.0	1.6	1.8	0.7	75.6
Greek	86.2	117.9	11.0	5.0	25.9	1.2	2.6	2.5	252.2
Hindi	38.1	18.2	8.0	1.9	1.9	0.3	1.4	0.2	70.0
Hungarian	7.5	7.9	2.9	1.1	1.6	0.1	0.4	0.1	21.6
Indonesian	19.1	10.4	3.2	6.6	1.1	0.1	0.7	0.8	42.0
Iranic languages (e)	20.3	11.5	3.0	4.5	3.7	0.2	0.7	-	43.8
Italian	87.3	133.3	22.0	32.9	35.8	1.4	3.4	0.7	316.9
Japanese	12.5	6.5	10.2	3.4	1.4	0.3	0.6	0.2	35.1
Khmer	8.8	10.0	1.5	1.0	3.2	-	0.2	0.1	24.7
Korean	36.7	6.0	7.4	1.9	1.5	0.3	0.8	0.1	54.6
Macedonian	28.9	30.8	1.1	5.7	0.7	-	0.6	-	67.8
Maltese	14.3	19.0	1.5	0.4	1.0	-	0.1	-	36.5
Polish	15.5	17.8	5.0	6.1	6.9	0.8	1.2	0.1	53.4
Portuguese	13.5	4.2	2.7	3.7	0.7	0.1	0.4	0.5	25.8
Russian	14.1	14.3	3.3	1.3	2.7	0.2	0.5	-	36.5
Samoan	12.9	5.6	9.4	0.2	0.1	-	0.3	-	28.5
Serbian	21.6	16.9	4.0	4.4	4.3	0.1	1.1	-	52.5
Sinhalese	6.7	16.9	2.2	1.5	0.7	0.1	0.8	0.1	29.1

Table AA.2

Table AA.2 Persons by language spoken at home, August 2006 ('000) (a)

	NSW	Vic	Q/d	WA	SA	Tas	ACT	NT	Aust (b)
Spanish	49.6	24.5	11.3	5.7	3.4	0.7	2.5	0.3	98.0
Tagalog (excludes Filipino) (d)	29.2	11.3	6.8	2.3	2.0	0.3	0.7	0.7	53.3
Tamil	15.7	11.1	1.7	1.9	1.1	0.1	0.9	0.2	32.7
Turkish	20.6	29.7	1.6	1.0	0.6	0.1	0.2	–	53.9
Vietnamese	74.6	72.2	17.1	13.2	13.8	0.1	3.1	0.8	194.9
Other (f)	182.4	134.9	61.0	44.1	25.0	3.6	9.2	4.0	464.9
Total	1 314.6	1 007.4	303.1	226.8	184.5	16.7	47.2	44.7	3 146.2
Not stated	388.0	256.7	229.8	129.2	67.0	21.6	14.4	20.9	1 127.8
Total	6 549.2	4 932.4	3 904.5	1 959.1	1 514.3	476.5	324.0	192.9	19 855.3

(a) This list of languages consists of the most common Language Spoken at Home responses reported in the 2001 Census.

(b) Includes other territories.

(c) Chinese languages comprises of 'Cantonese', 'Mandarin', 'Chinese, nfd', 'Hakka', 'Hokkien', 'Teochew', 'Wu' and 'Chinese, nec'.

(d) In 2006 'Tagalog' and 'Filipino' have been identified individually, in 2001 they were classed as one language.

(e) Iranian languages comprises of 'Persian (excluding Dari)', 'Dari', 'Iranic, nfd', 'Kurdish', 'Pashto', 'Balochi' and 'Iranic, nec'.

(f) Comprises languages not identified individually, 'Inadequately described' and 'Non-verbal, so described'.

nfd Not further defined. **nec** Not elsewhere classified.

Source: ABS (2007), *2006 Census of Population and Housing*, Cat. no. 2068.0; 2009 Report, table AA.5.

Table AA.3

Table AA.3	Experimental		estimated		resident		Australian		Indigenous	
	population, 30 June 2006 (a)									
	<i>NSW</i>	<i>Vic</i>	<i>Qld</i>	<i>WA</i>	<i>SA</i>	<i>Tas (b)</i>	<i>ACT (c)</i>	<i>NT</i>	<i>Aust (d)</i>	
Females										
0–4 years	8 938	1 828	9 506	4 600	1 488	940	251	3 869	31 430	
5–9 years	9 116	1 948	9 372	4 701	1 569	955	242	3 770	31 686	
10–14 years	9 407	1 824	9 092	4 505	1 577	1 082	213	3 586	31 293	
15–19 years	7 552	1 621	7 439	3 982	1 427	936	212	3 315	26 494	
20–24 years	5 891	1 278	6 182	3 362	1 152	760	191	3 209	22 035	
25–29 years	4 843	1 083	5 286	2 926	961	545	159	2 903	18 716	
30–34 years	5 093	1 084	5 321	2 766	943	540	151	2 758	18 665	
35–39 years	5 098	1 070	5 090	2 783	922	594	170	2 489	18 224	
40–44 years	4 667	938	4 358	2 333	830	546	129	2 004	15 808	
45–49 years	3 860	767	3 472	1 957	680	489	109	1 698	13 041	
50–54 years	3 028	616	2 802	1 575	515	324	79	1 371	10 315	
55–59 years	2 331	498	2 071	1 085	370	271	44	906	7 585	
60–64 years	1 539	335	1 368	737	279	157	28	698	5 147	
65–69 years	1 114	251	949	500	197	129	15	449	3 605	
70–74 years	771	153	597	355	143	75	9	362	2 466	
75–79 years	501	140	384	216	103	np	np	176	1 581	
80–84 years	229	83	229	136	48	np	np	110	877	
85 years and over	204	69	183	120	47	np	np	83	725	
Total	74 182	15 586	73 701	38 639	13 251	8 453	2 013	33 756	259 693	
Males										
0–4 years	9 567	1 816	9 675	4 665	1 559	1 006	210	4 081	32 592	
5–9 years	9 658	1 899	9 644	5 122	1 634	1 054	247	3 992	33 261	
10–14 years	9 857	1 963	9 718	4 854	1 582	1 096	284	3 792	33 156	
15–19 years	8 310	1 609	7 871	4 194	1 446	1 078	228	3 486	28 233	
20–24 years	6 261	1 356	6 255	3 454	1 157	718	211	3 107	22 525	
25–29 years	4 730	1 046	5 239	3 065	868	524	149	2 681	18 315	
30–34 years	4 680	999	5 088	2 935	904	464	158	2 587	17 822	
35–39 years	4 545	1 001	4 717	2 613	828	518	139	2 353	16 721	
40–44 years	4 071	890	4 048	2 289	759	453	122	1 941	14 578	
45–49 years	3 542	738	3 230	1 948	615	429	84	1 578	12 175	
50–54 years	2 894	638	2 540	1 488	517	364	93	1 185	9 726	
55–59 years	2 167	473	1 860	1 011	331	288	51	770	6 956	
60–64 years	1 513	302	1 162	653	226	198	28	538	4 626	
65–69 years	982	224	690	432	151	104	15	333	2 936	
70–74 years	652	121	483	260	90	83	6	183	1 879	
75–79 years	328	90	275	156	67	np	np	110	1 070	
80–84 years	149	40	140	79	30	np	np	62	519	
85 years and over	90	48	93	71	29	np	np	47	391	
Total	73 996	15 253	72 728	39 289	12 793	8 447	2 030	32 826	257 481	

Table AA.3

Table AA.3	Experimental		estimated		resident		Australian		Indigenous	
	population, 30 June 2006 (a)									
	NSW	Vic	Qld	WA	SA	Tas (b)	ACT (c)	NT	Aust (d)	
Persons										
0–4 years	18 505	3 644	19 181	9 265	3 047	1 946	461	7 950	64 022	
5–9 years	18 774	3 847	19 016	9 823	3 203	2 009	489	7 762	64 947	
10–14 years	19 264	3 787	18 810	9 359	3 159	2 178	497	7 378	64 449	
15–19 years	15 862	3 230	15 310	8 176	2 873	2 014	440	6 801	54 727	
20–24 years	12 152	2 634	12 437	6 816	2 309	1 478	402	6 316	44 560	
25–29 years	9 573	2 129	10 525	5 991	1 829	1 069	308	5 584	37 031	
30–34 years	9 773	2 083	10 409	5 701	1 847	1 004	309	5 345	36 487	
35–39 years	9 643	2 071	9 807	5 396	1 750	1 112	309	4 842	34 945	
40–44 years	8 738	1 828	8 406	4 622	1 589	999	251	3 945	30 386	
45–49 years	7 402	1 505	6 702	3 905	1 295	918	193	3 276	25 216	
50–54 years	5 922	1 254	5 342	3 063	1 032	688	172	2 556	20 041	
55–59 years	4 498	971	3 931	2 096	701	559	95	1 676	14 541	
60–64 years	3 052	637	2 530	1 390	505	355	56	1 236	9 773	
65–69 years	2 096	475	1 639	932	348	233	30	782	6 541	
70–74 years	1 423	274	1 080	615	233	158	15	545	4 345	
75–79 years	829	230	659	372	170	96	8	286	2 651	
80–84 years	378	123	369	215	78	56	5	172	1 396	
85 years and over	294	117	276	191	76	28	3	130	1 116	
Total	148 178	30 839	146 429	77 928	26 044	16 900	4 043	66 582	517 174	

(a) Experimental estimates at 30 June 2006 are preliminary rebased estimates and are based on the 2006 Census of Population and Housing.

(b) For Tasmania in the age group 75 and over, the number of males is 70 and the number of females is 110.

(c) For the Australian Capital Territory in the age group 75 and over, the number of males is 5 and the number of females is 11.

(d) Includes other territories.

np Not published but included in totals.

Source: ABS (2007), *Australian Demographic Statistics, March Quarter 2007*, Cat. no. 3101.0; 2009 Report, table AA.7.

Table AA.4

Table AA.4 Experimental projection of the Indigenous population, 2000 to 2009 (number) (a), (b), (c)

	NSW	Vic	Qld	WA	SA	Tas	ACT	NT	Aust (d)
Female									
2000	66 199	13 798	63 175	32 396	12 688	8 520	1 887	27 825	226 608
2001	67 456	14 047	65 384	33 050	12 940	8 666	1 946	28 383	230 994
2002	68 548	14 337	65 683	33 702	13 203	8 779	2 000	28 839	235 214
2003	69 664	14 643	66 985	34 365	13 468	8 892	2 052	29 287	239 480
2004	70 800	14 950	68 296	35 041	13 731	9 006	2 101	29 746	243 796
2005	71 957	15 267	69 629	35 728	14 004	9 128	2 143	30 187	248 169
2006	73 141	15 590	70 976	36 421	14 280	9 252	2 188	30 630	252 605
2007	74 350	15 923	72 342	37 120	14 562	9 383	2 229	31 069	257 106
2008	75 586	16 261	73 724	37 834	14 846	9 518	2 272	31 503	261 673
2009	76 848	16 604	75 135	38 559	15 129	9 656	2 315	31 932	266 308
Male									
2000	66 105	13 582	60 318	32 308	12 417	8 543	1 920	27 959	223 260
2001	67 432	13 799	61 526	32 881	12 604	8 718	1 963	28 492	227 526
2002	68 513	14 098	62 923	33 460	12 843	8 835	2 008	28 919	231 711
2003	69 616	14 407	64 317	34 038	13 083	8 956	2 055	29 347	235 932
2004	70 733	14 733	65 717	34 624	13 329	9 081	2 103	29 762	240 196
2005	71 867	15 062	67 125	35 217	13 574	9 205	2 157	30 186	244 508
2006	73 018	15 398	68 551	35 822	13 825	9 334	2 208	30 602	248 874
2007	74 192	15 737	69 991	36 443	14 079	9 463	2 261	31 016	253 299
2008	75 385	16 084	71 450	37 069	14 339	9 597	2 314	31 429	257 786
2009	76 606	16 441	72 920	37 705	14 607	9 731	2 365	31 843	262 337
Persons									
2000	132 304	27 380	123 493	64 704	25 105	17 063	3 807	55 784	449 868
2001	134 888	27 846	125 910	65 931	25 544	17 384	3 909	56 875	458 520
2002	137 061	28 435	128 606	67 162	26 046	17 614	4 008	57 758	466 925
2003	139 280	29 050	131 302	68 403	26 551	17 848	4 107	58 634	475 412
2004	141 533	29 683	134 013	69 665	27 060	18 087	4 204	59 508	483 992
2005	143 824	30 329	136 754	70 945	27 578	18 333	4 300	60 373	492 677
2006	146 159	30 988	139 527	72 243	28 105	18 586	4 396	61 232	501 479
2007	148 542	31 660	142 333	73 563	28 641	18 846	4 490	62 085	510 405
2008	150 971	32 345	145 174	74 903	29 185	19 115	4 586	62 932	519 459
2009	153 454	33 045	148 055	76 264	29 736	19 387	4 680	63 775	528 645

(a) At 30 June.

(b) Total persons may not add as a result of rounding.

(c) Based on low series figures.

(d) Includes other territories.

Source: ABS (2004), *Experimental Estimates and Projections, Aboriginal and Torres Strait Islanders*, Cat. no. 3238.0; 2009 Report, table AA.8.

Table AA.5

Table AA.5 Language spoken at home by Indigenous people and proficiency in spoken English, by sex, August 2006

	NSW	Vic	Q/d	WA	SA	Tas	ACT	NT	Aust (a)
Females									
Speaks English only	66 734	14 225	55 560	24 041	10 900	8 217	1 826	9 917	191 520
Speaks an Indigenous language and speaks English									
Very well or well	397	139	4 749	3 362	1 241	22	48	11 230	21 188
Not well	13	10	658	430	238	-	-	2 547	3 896
Not at all	-	3	193	81	46	-	-	744	1 067
Not stated (b)	18	3	120	52	35	-	3	422	653
Total	428	155	5 720	3 925	1 560	22	51	14 943	26 804
Speaks other language (c)	668	418	1 366	294	128	62	27	467	3 437
Not stated (d)	2 200	599	2 246	1 460	521	160	39	1 967	9 195
Total	70 030	15 397	64 892	29 720	13 109	8 461	1 943	27 294	230 956
Males									
Speaks English only	63 403	13 296	52 180	22 429	10 097	8 012	1 799	9 171	180 486
Speaks an Indigenous language and speaks English									
Very well or well	347	116	4 543	3 139	1 118	11	29	10 357	19 660
Not well	19	8	683	417	214	-	3	2 523	3 867
Not at all	-	3	200	89	26	-	-	753	1 071
Not stated (b)	12	3	100	46	36	-	-	397	594
Total	378	130	5 526	3 691	1 394	11	32	14 030	25 192
Speaks other language (c)	820	511	1 392	327	168	59	43	496	3 828
Not stated (d)	3 877	807	3 590	2 544	789	223	57	2 672	14 566
Total	68 478	14 744	62 688	28 991	12 448	8 305	1 931	26 369	224 072
Persons									
Speaks English only	130 137	27 521	107 740	46 470	20 997	16 229	3 625	19 088	372 006
Speaks an Indigenous language and speaks English									
Very well or well	744	255	9 292	6 501	2 359	33	77	21 587	40 848
Not well	32	18	1 341	847	452	-	3	5 070	7 763

Table AA.5

Table AA.5 Language spoken at home by Indigenous people and proficiency in spoken English, by sex, August 2006

	NSW	Vic	Q/d	WA	SA	Tas	ACT	NT	Aust (a)
Not at all	–	6	393	170	72	–	–	1 497	2 138
Not stated (b)	30	6	220	98	71	–	3	819	1 247
Total	806	285	11 246	7 616	2 954	33	83	28 973	51 996
Speaks other language (c)	1 488	929	2 758	621	296	121	70	963	7 265
Not stated (d)	6 077	1 406	5 836	4 004	1 310	383	96	4 639	23 761
Total	138 508	30 141	127 580	58 711	25 557	16 766	3 874	53 663	455 028

(a) Includes other territories.

(b) Language (Census code = LANP) stated, proficiency in spoken English (Census code = ENGP) not stated.

(c) Includes inadequately described and non-verbal so described.

(d) Not stated — both language spoken at home (Census code = LANP) and proficiency in spoken English (Census code = ENGP) or just language spoken at home not stated.

Source: ABS (unpublished), derived from 2006 Census of Population and Housing; 2009 Report, table AA.9.

Family and household

Table AA.6

Table AA.6 Families and persons in families in occupied private dwellings by Indigenous status and family/household composition, August 2006 (a), (b), (c)

	Unit	NSW	Vic	Qld	WA	SA	Tas	ACT	NT	Aust
Indigenous										
Family										
	%	42.4	41.6	45.9	44.1	40.9	49.4	47.6	48.0	44.4
	%	22.4	26.9	21.8	18.4	21.0	28.5	25.8	17.0	21.8
	%	32.9	29.5	29.8	34.0	35.2	20.7	25.4	31.7	31.3
	%	2.2	2.1	2.5	3.3	3.0	1.4	1.7	3.2	2.5
	'000	38.0	8.4	32.8	13.8	6.4	5.5	1.1	11.1	117.1
Person (d)										
	%	53.9	53.4	57.6	55.1	51.7	62.8	59.4	59.1	56.0
	%	13.8	17.1	12.8	10.7	12.8	18.0	15.9	9.3	13.0
	%	30.9	28.0	27.9	32.0	33.4	18.2	23.7	29.4	29.3
	%	1.5	1.4	1.7	2.2	2.1	0.9	1.1	2.2	1.7
	'000	125.1	26.6	114.5	49.6	21.5	17.2	3.6	45.3	403.6
Non-Indigenous										
Family										
	%	46.4	47.1	43.3	45.3	42.5	41.3	47.1	46.0	45.4
	%	36.3	35.9	39.6	38.8	40.1	40.9	36.3	37.9	37.5
	%	15.6	15.2	15.4	14.3	15.8	16.5	15.0	14.7	15.4
	%	1.7	1.8	1.6	1.7	1.6	1.3	1.6	1.4	1.7
	'000	1 662.6	1 272.7	991.0	493.5	397.2	121.9	82.9	32.1	5 054.1
Person (d)										
	%	60.9	61.5	57.9	59.9	57.0	55.7	61.6	60.6	60.0
	%	24.2	23.9	27.1	26.3	27.8	28.5	24.5	25.4	25.3
	%	13.7	13.3	13.9	12.6	14.0	14.8	12.8	13.0	13.6

Table AA.6

Table AA.6 Families and persons in families in occupied private dwellings by Indigenous status and family/household composition, August 2006 (a), (b), (c)

	Unit	NSW	Vic	Qld	WA	SA	Tas	ACT	NT	Aust
Other family	%	1.2	1.3	1.2	1.2	1.1	1.0	1.1	1.0	1.2
Total	'000	4 938.5	3 790.3	2 866.5	1 429.5	1 131.4	345.1	242.1	92.4	14 837.4
Total (includes Indigenous status not stated)										
Family										
Couple family with children	%	46.2	46.9	43.3	45.1	42.3	41.4	47.0	46.5	45.3
Couple family without children	%	36.0	35.9	39.1	38.3	40.0	40.5	36.2	32.6	37.2
One parent family	%	16.1	15.4	15.9	14.8	16.1	16.7	15.1	19.1	15.8
Other family	%	1.7	1.9	1.7	1.7	1.6	1.4	1.6	1.9	1.7
Total	'000	1 716.2	1 294.4	1 032.0	511.9	407.5	128.7	84.5	43.4	5 219.2
Person										
Couple family with children	%	60.5	61.3	57.7	59.6	56.7	55.8	61.4	60.0	59.7
Couple family without children	%	24.1	24.0	26.6	25.8	27.7	28.2	24.4	20.1	25.0
One parent family	%	14.2	13.4	14.5	13.3	14.4	15.0	13.0	18.5	14.0
Other family	%	1.2	1.3	1.2	1.3	1.2	1.0	1.1	1.4	1.2
Total	'000	5 105.8	3 852.3	3 002.7	1 490.9	1 162.4	365.7	247.1	138.4	15 367.0

(a) An Indigenous family is a family where either the reference person and/or spouse/partner is of Aboriginal and/or Torres Strait Islander origin.

(b) Excludes family members who were temporarily absent on Census Night.

(c) Cells in this table have been randomly adjusted to avoid the release of confidential data.

(d) Includes members of an 'Indigenous' and 'Other' family who are of Indigenous, non-Indigenous or not stated status.

Source: ABS (unpublished), derived from 2006 Census of Population and Housing; 2009 Report, table AA.13.

Income, education and employment

Table AA.7

Table AA.7 **Persons aged 15 years and over by weekly individual income and Indigenous status, August 2006**

	<i>Unit</i>	<i>NSW</i>	<i>Vic</i>	<i>Qld</i>	<i>WA</i>	<i>SA</i>	<i>Tas</i>	<i>ACT</i>	<i>NT</i>	<i>Aust (a)</i>
Indigenous										
Nil income	%	8.1	8.9	8.4	7.9	7.5	7.4	7.9	8.2	8.2
\$1-\$149	%	9.0	9.0	7.6	7.5	9.4	9.3	8.5	8.6	8.4
\$150-\$249	%	22.2	17.9	21.5	26.7	25.6	21.7	14.0	41.2	24.8
\$250-\$399	%	15.6	15.3	15.6	14.0	15.7	17.2	11.7	13.8	15.2
\$400-\$599	%	13.7	14.5	15.4	11.0	12.1	16.3	9.7	6.4	12.9
\$600-\$799	%	7.8	9.1	8.8	6.4	7.1	9.2	9.0	3.7	7.5
\$800-\$999	%	4.6	5.6	5.0	3.9	4.3	5.8	11.2	2.5	4.5
\$1000-\$1299	%	3.8	4.2	3.8	3.4	3.3	4.1	10.6	2.0	3.6
\$1300-\$1599	%	1.8	1.7	1.6	1.8	1.4	1.5	6.1	0.8	1.6
\$1600-\$1999	%	0.9	0.9	0.9	1.2	0.5	0.6	4.1	0.4	0.8
\$2000 or more	%	0.9	1.4	0.8	1.1	0.8	0.6	2.0	0.3	0.9
Not stated	%	11.6	11.5	10.7	15.2	12.3	6.3	5.2	12.0	11.6
Total	'000	85.3	19.0	78.0	37.0	16.3	10.7	2.5	35.0	283.9
Non-Indigenous										
Nil income	%	8.2	7.9	6.6	7.3	6.4	5.8	6.1	5.8	7.5
\$1-\$149	%	7.0	7.8	7.0	7.3	7.3	7.2	6.7	4.9	7.2
\$150-\$249	%	14.6	14.5	13.8	12.8	16.3	18.1	8.7	7.4	14.3
\$250-\$399	%	13.4	13.2	13.9	13.0	15.1	16.6	9.3	8.3	13.5
\$400-\$599	%	13.7	14.2	15.7	13.7	15.2	15.8	11.3	13.3	14.3
\$600-\$799	%	10.7	11.2	12.1	11.2	11.9	11.5	10.4	14.7	11.3
\$800-\$999	%	8.0	8.5	8.6	8.7	8.4	7.6	10.7	12.5	8.4
\$1000-\$1299	%	7.9	8.0	8.4	9.1	7.7	7.2	13.3	13.6	8.2
\$1300-\$1599	%	4.9	4.1	4.2	5.1	3.7	3.2	8.9	7.9	4.5
\$1600-\$1999	%	2.9	2.4	2.4	3.3	1.8	1.4	5.9	3.9	2.7
\$2000 or more	%	4.3	3.5	3.1	4.5	2.3	1.7	6.2	4.1	3.7
Not stated	%	4.4	4.7	4.4	4.2	4.0	4.0	2.4	3.6	4.4
Total	'000	4 850.4	3 747.9	2 841.1	1 425.0	1 160.9	353.6	247.3	97.6	14 725.2
Total (including Indigenous status not stated)										
Nil income	%	7.8	7.6	6.4	6.9	6.2	5.7	5.9	6.0	7.2
\$1-\$149	%	6.7	7.5	6.6	6.9	7.0	7.0	6.5	5.4	6.9
\$150-\$249	%	14.1	14.0	13.4	12.5	16.0	17.7	8.5	15.0	13.9
\$250-\$399	%	12.8	12.7	13.3	12.3	14.7	16.1	9.0	9.0	13.0
\$400-\$599	%	13.0	13.6	14.9	12.9	14.7	15.3	10.9	10.6	13.6
\$600-\$799	%	10.1	10.6	11.4	10.5	11.3	11.0	10.0	10.9	10.6
\$800-\$999	%	7.5	8.1	8.0	8.1	8.0	7.2	10.3	9.1	7.9
\$1000-\$1299	%	7.4	7.6	7.8	8.4	7.3	6.8	12.7	9.7	7.7
\$1300-\$1599	%	4.6	3.9	3.9	4.7	3.5	3.0	8.5	5.5	4.2
\$1600-\$1999	%	2.7	2.3	2.2	3.0	1.8	1.3	5.6	2.7	2.5
\$2000 or more	%	4.1	3.3	2.9	4.1	2.2	1.6	5.9	2.9	3.5
Not stated	%	9.1	8.8	9.1	9.6	7.4	7.3	6.2	13.2	8.9
Total	'000	5 250.3	3 982.0	3 098.0	1 562.7	1 233.5	382.5	262.1	145.3	15 918.1

Table AA.7 Persons aged 15 years and over by weekly individual income and Indigenous status, August 2006

<i>Unit</i>	<i>NSW</i>	<i>Vic</i>	<i>Qld</i>	<i>WA</i>	<i>SA</i>	<i>Tas</i>	<i>ACT</i>	<i>NT</i>	<i>Aust (a)</i>
-------------	------------	------------	------------	-----------	-----------	------------	------------	-----------	-----------------

(a) Includes other territories.

Source: ABS (unpublished), derived from *2006 Census of Population and Housing*; 2009 Report, table AA.17.

Table AA.8

Table AA.8 People aged 15 years or over, by highest year of school completed and Indigenous status, August 2006 ('000)

	<i>NSW</i>	<i>Vic</i>	<i>Qld</i>	<i>WA</i>	<i>SA</i>	<i>Tas</i>	<i>ACT</i>	<i>NT</i>	<i>Aust (a)</i>
Indigenous									
Year 8 or below	10.4	2.2	9.3	4.2	2.2	0.9	0.2	10.8	40.1
Year 9 or equivalent	14.6	2.6	8.3	3.8	1.8	1.5	0.2	4.3	37.2
Year 10 or equivalent	26.6	4.5	22.3	11.4	3.9	4.3	0.7	5.7	79.5
Year 11 or equivalent	6.8	2.7	8.7	4.7	3.1	1.1	0.2	3.2	30.5
Year 12 or equivalent	16.0	4.3	19.9	6.1	2.8	2.1	1.0	3.0	55.1
Did not go to school	0.8	0.3	1.0	1.1	0.3	0.1	–	2.5	6.1
Not stated	10.1	2.3	8.5	5.8	2.2	0.8	0.1	5.6	35.3
Total	85.3	19.0	78.0	37.0	16.3	10.7	2.5	35.0	283.9
Non-Indigenous									
Year 8 or below	333.5	325.0	216.3	71.1	96.5	26.1	9.0	4.3	1 082.0
Year 9 or equivalent	394.4	281.4	170.7	80.3	77.7	36.9	11.4	5.6	1 058.4
Year 10 or equivalent	1 314.7	619.0	803.5	374.5	221.4	121.2	43.4	22.7	3 520.5
Year 11 or equivalent	301.8	540.7	243.3	165.5	231.9	30.6	14.6	15.0	1 543.6
Year 12 or equivalent	2 189.4	1 732.1	1 250.4	651.8	465.3	116.6	160.8	45.3	6 612.3
Did not go to school	52.9	42.2	12.8	8.7	8.9	1.2	1.0	0.6	128.6
Not stated	263.7	207.5	143.9	73.2	59.2	21.0	7.2	4.1	779.8
Total	4 850.4	3 747.9	2 841.1	1 425.0	1 160.9	353.6	247.3	97.6	14 725.2
All persons (b)									
Year 8 or below	350.5	334.1	230.0	77.0	101.0	27.6	9.3	15.3	1 145.0
Year 9 or equivalent	414.4	288.1	181.1	85.5	80.7	39.1	11.8	10.0	1 110.9
Year 10 or equivalent	1 355.6	631.0	833.5	389.9	227.9	126.8	44.4	28.7	3 638.0
Year 11 or equivalent	312.2	548.8	254.3	171.7	237.0	32.0	15.0	18.4	1 589.6
Year 12 or equivalent	2 224.5	1 752.3	1 279.7	663.3	471.9	119.7	162.7	48.6	6 723.2
Did not go to school	55.0	43.6	14.2	10.0	9.4	1.3	1.1	3.2	138.0
Not stated	538.0	384.1	305.2	165.3	105.5	35.8	17.8	21.2	1 573.3
Total	5 250.3	3 982.0	3 098.0	1 562.7	1 233.5	382.5	262.1	145.3	15 918.1

(a) Includes other territories.

(b) Includes Indigenous status not stated.

– Nil or rounded to zero.

Source: ABS (2007), *2006 Census of Population and Housing*, Cat. no. 2068.0; 2009 Report, table AA.20.

Table AA.9

Table AA.9 **Type of educational institution attending by Indigenous status, August 2006 ('000) (a)**

	<i>NSW</i>	<i>Vic</i>	<i>Qld</i>	<i>WA</i>	<i>SA</i>	<i>Tas</i>	<i>ACT</i>	<i>NT</i>	<i>Aust (b)</i>
Indigenous									
Pre-school	4.0	0.8	3.3	1.4	0.6	0.2	0.1	0.9	11.4
Infants/primary	22.3	4.6	20.7	9.0	4.3	2.8	0.6	7.4	71.7
Secondary	13.6	2.9	11.6	4.6	2.1	1.7	0.4	2.9	39.7
TAFE (c)	4.2	0.9	2.3	1.0	0.7	0.7	0.1	0.4	10.4
University	2.3	0.6	2.0	0.8	0.4	0.3	0.2	0.5	7.1
Other	0.7	0.3	0.8	0.3	0.2	0.1	–	0.3	2.5
Not stated	13.8	3.2	12.2	7.5	2.8	1.2	0.2	8.7	49.7
Total	60.9	13.3	52.9	24.5	11.1	7.0	1.7	21.0	192.4
Non-Indigenous									
Pre-school	108.0	76.0	54.5	25.3	17.6	3.7	4.1	1.8	291.1
Infants/primary	514.2	388.9	322.0	158.2	133.1	40.2	25.9	12.1	1 594.8
Secondary	417.6	325.3	222.0	110.2	84.1	27.8	22.3	7.0	1 216.3
TAFE (c)	154.7	100.1	65.2	39.3	31.7	11.7	8.4	1.8	412.9
University	234.9	196.8	135.0	71.8	53.0	13.8	22.4	5.3	733.0
Other	41.2	36.6	21.6	9.6	9.5	2.2	2.6	0.9	124.0
Not stated	241.2	188.5	132.7	68.2	52.2	18.7	7.5	4.0	713.3
Total	1 711.7	1 312.2	952.9	482.6	381.2	118.0	93.4	32.9	5 085.4
All persons (d)									
Pre-school	114.0	78.1	58.7	27.2	18.6	4.0	4.3	2.8	307.8
Infants/primary	547.1	401.1	348.5	169.9	139.5	43.8	26.9	19.7	1 696.8
Secondary	438.2	333.6	236.7	116.4	87.3	29.9	23.0	10.0	1 275.1
TAFE (c)	160.8	102.3	68.1	40.8	32.7	12.4	8.6	2.2	428.0
University	239.0	199.0	137.8	73.1	53.7	14.2	22.7	5.8	745.5
Other	42.4	37.3	22.5	9.9	9.7	2.3	2.6	1.2	128.0
Not stated	558.3	391.6	323.5	178.2	105.8	36.0	19.7	27.0	1 640.3
Total	2 099.9	1 543.0	1 196.0	615.4	447.4	142.6	107.9	68.6	6 221.5

(a) Totals may not add as a result of rounding.

(b) Includes other territories.

(c) Includes 'Technical and Further Educational Institution (including TAFE colleges)'.
– Nil or rounded to zero.

(d) Includes Indigenous status not stated.

– Nil or rounded to zero.

Source: ABS (2007), *2006 Census of Population and Housing*, Cat. no. 2068.0; 2009 Report, table AA.21.

General economic indicators

Table AA.10

Table AA.10 Gross State Product, 2002-03 to 2006-07, (2006-07 dollars) (a)

	<i>Unit</i>	<i>NSW</i>	<i>Vic</i>	<i>Qld</i>	<i>WA</i>	<i>SA</i>	<i>Tas</i>	<i>ACT</i>	<i>NT</i>	<i>Aust</i>
Gross state product										
2002-03	\$m	313 257	235 249	154 076	102 630	65 264	17 421	19 341	11 298	918 537
2003-04	\$m	323 415	244 472	164 950	105 359	67 383	18 732	20 192	11 578	956 081
2004-05	\$m	329 284	246 582	175 003	112 427	67 478	19 318	20 622	12 464	983 179
2005-06	\$m	330 240	247 074	186 800	125 790	68 177	19 709	20 914	13 277	1 011 981
2006-07	\$m	335 144	247 440	195 704	141 368	69 540	21 088	21 586	14 494	1 046 365
Proportion of national gross domestic product										
2002-03	%	34.1	25.6	16.8	11.2	7.1	1.9	2.1	1.2	100.0
2003-04	%	33.8	25.6	17.3	11.0	7.0	2.0	2.1	1.2	100.0
2004-05	%	33.5	25.1	17.8	11.4	6.9	2.0	2.1	1.3	100.0
2005-06	%	32.6	24.4	18.5	12.4	6.7	1.9	2.1	1.3	100.0
2006-07	%	32.0	23.6	18.7	13.5	6.6	2.0	2.1	1.4	100.0
Growth on previous year										
2002-03	%	-0.3	5.0	2.5	5.8	5.9	14.2	7.7	7.9	3.1
2003-04	%	3.2	3.9	7.1	2.7	3.2	7.5	4.4	2.5	4.1
2004-05	%	1.8	0.9	6.1	6.7	0.1	3.1	2.1	7.7	2.8
2005-06	%	0.3	0.2	6.7	11.9	1.0	2.0	1.4	6.5	2.9
2006-07	%	1.5	0.1	4.8	12.4	2.0	7.0	3.2	9.2	3.4
Gross state product per person										
2002-03	\$	47 054	48 172	40 992	53 032	42 874	36 705	59 993	57 020	46 503
2003-04	\$	48 280	49 485	42 844	53 620	44 003	38 991	62 389	58 144	47 832
2004-05	\$	48 871	49 289	44 399	56 326	43 801	39 888	63 268	61 579	48 596
2005-06	\$	48 568	48 691	46 288	61 806	43 860	40 371	63 316	64 087	49 305
2006-07	\$	48 829	48 037	47 527	68 032	44 281	42 924	64 591	68 711	50 264

(a) The ABS introduced GSP (P) estimates in 2006-07 which resulted in alternative measures of GSP. The data reported are GSP (A) estimates and are measured as the average of the GSP Production (P) and GSP Income/Expenditure (I/E) volume estimates.

Source: ABS (various years), *Australian National Accounts, State Accounts*, Cat. no. 5220.0; Review calculations based on ABS (2008), *Australian National Accounts: National Income, Expenditure and Product, June Quarter 2008*, Cat. no. 5206.0; table AA.11; 2009 Report, table AA.25.

Table AA.11 Gross Domestic Product price deflator (index) (a)

	<i>GDP price deflator</i>				
	<i>2003-04=100</i>	<i>2004-05=100</i>	<i>2005-06=100</i>	<i>2006-07=100</i>	<i>2007-08=100</i>
1998-99	85.2	82.2	78.5	75.0	72.0
1999-2000	87.0	83.9	80.1	76.6	73.5
2000-01	91.2	88.0	84.0	80.3	77.1
2001-02	93.8	90.5	86.4	82.6	79.3
2002-03	96.6	93.2	89.0	85.1	81.7
2003-04	100.0	96.4	92.1	88.0	84.5
2004-05	103.7	100.0	95.5	91.3	87.6
2005-06	108.6	104.7	100.0	95.6	91.7
2006-07	113.6	109.5	104.6	100.0	96.0
2007-08	118.3	114.1	109.0	104.2	100.0

(a) Data are sourced from 2009 Report, table 32, Expenditure on Gross Domestic Product, Chain volume measures and current prices, Annual (Series ID A2304682C) in ABS 2008. See the 'Statistical concepts used in the Report' section of the Statistical appendix for information on how these gross domestic product deflators were calculated using data from that source.

Source: Review calculations based on ABS (2008), *Australian National Accounts: National Income, Expenditure and Product, June Quarter 2008*, Cat. no. 5206.0; 2009 Report, table AA.26.

Statistical concepts

Table AA.12

Table AA.12 Age standardisation of data using the direct method

Age groups	Non-Indigenous			Indigenous		
	Population	People with severe/profound limitations	Age-specific severe/profound limitations	Population	People with severe/profound limitations	Age-specific severe/profound limitations
	C1	C2	C3 = C2/C1*100	C4	C5	C6 = C5/C4*100
18 to 24	1 869 200	34 200	1.8	54 400	2 800	5.1
25 to 29	1 389 700	24 700	1.8	36 300	1 600	4.4
30 to 34	1 458 500	37 100	2.5	34 800	2 800	8.0
35 to 39	1 432 000	43 900	3.1	31 200	1 600	5.1
40 to 44	1 475 000	70 200	4.8	26 600	2 800	10.5
45 to 49	1 366 300	43 800	3.2	20 600	2 000	9.7
50 to 54	1 263 900	47 900	3.8	17 700	3 000	16.9
55 to 59	1 060 700	63 500	6.0	12 400	1 400	11.3
60 to 64	816 400	49 700	6.1	7 000	1 100	15.7
65 or over	2 222 200	283 400	12.8	12 900	3 200	24.8
Total	14 353 900	698 400	4.9	253 900	22 300	8.8

Table AA.12

Table AA.12 Age standardisation of data using the direct method

Age groups	Step 2			Step 3		
	Standard population	Non-Indigenous expected number of 'events'	Indigenous expected number of 'events'	Non-Indigenous age standardised rate	Indigenous age standardised rate	Rate ratio Indigenous/non-Indigenous
	C7	$C8 = C7 * C3 / 100$	$C9 = C7 * C6 / 100$	$C10 = \sum C8 / \sum C7 * 100$	$C11 = \sum C9 / \sum C7 * 100$	$C12 = C11 / C10$
18 to 24	1 844 162	33 742	94 920			
25 to 29	1 407 081	25 009	62 020			
30 to 34	1 466 615	37 306	118 004			
35 to 39	1 492 204	45 746	76 523			
40 to 44	1 479 257	70 403	155 711			
45 to 49	1 358 594	43 553	131 902			
50 to 54	1 300 777	49 298	220 471			
55 to 59	1 008 799	60 393	113 897			
60 to 64	822 024	50 042	129 175			
65 or over	2 435 534	310 607	604 163			
Total	14 615 047	726 098	1 706 787	5.0	11.7	2.4

Source: AIHW (2006), 'Potential Population' — Updating the Indigenous Factor in Disability Services Performance Indicator Denominators, Welfare Working Paper Series Number 50, Cat. no. DIS 45, Canberra; ABS 2008, Population by Age and Sex, Australian States and Territories, June 2007, Cat. no. 3201.0; 2009 Report, table AA.27.

Table AA.13

Table AA.13 Age standardisation of data using the indirect method (a), (b)

Variable	NSW (c)	Vic	Qld	WA	SA	Tas	ACT (c)	NT	Aust
C — Observed number of imprisonments									
Indigenous	2 008	236	1 451	1 588	412	70	21	720	6 505
Non-Indigenous	7 267	3 930	4 040	2 215	1 443	469	160	155	19 679
R — Standard population imprisonment rate (per 100 000)	153.2	153.2	150.7	153.2	153.2	153.2	153.2	153.2	153.2
pi — Study populations									
Indigenous									
17/18–20 years	6 541	1 460	9 773	3 246	1 241	914	196	2 581	25 952
20–24 years	14 176	3 183	13 521	7 446	2 941	1 931	452	6 193	49 843
25–29 years	10 653	2 519	10 840	5 956	2 252	1 407	358	5 525	39 510
30–34 years	9 371	2 191	10 036	5 050	2 066	1 065	350	4 948	35 077
35–39 years	10 188	2 335	10 074	5 172	2 005	1 145	340	4 771	36 030
40–44 years	8 599	1 955	8 189	4 373	1 709	1 055	293	3 750	29 923
45–54 years	13 724	2 914	12 196	6 665	2 634	1 852	404	5 366	45 755
55+ years	12 187	2 536	10 343	5 733	2 255	1 480	251	4 765	39 550
Total	85 439	19 093	84 972	43 641	17 103	10 849	2 644	37 899	301 640
Non-Indigenous									
17/18–20 years	180 194	143 317	166 645	57 300	41 754	12 395	10 539	3 843	615 987
20–24 years	463 309	374 430	287 625	146 914	107 652	29 445	29 191	11 655	1 450 221
25–29 years	472 093	368 995	280 354	141 421	98 380	26 809	28 387	13 087	1 429 526
30–34 years	476 046	367 820	280 322	141 251	97 734	27 610	25 614	13 245	1 429 642
35–39 years	499 251	397 916	305 448	156 460	110 513	32 650	26 098	13 360	1 541 696
40–44 years	480 492	376 440	294 009	153 356	111 738	32 838	24 159	12 563	1 485 595
45–54 years	941 244	715 564	568 926	295 145	223 777	70 680	46 916	24 254	2 886 506
55+ years	1 713 479	1 284 272	985 918	485 295	431 531	134 947	70 226	25 677	5 131 345
Total	5 226 108	4 028 754	3 169 247	1 577 142	1 223 079	367 374	261 130	117 684	15 970 518

Table AA.13

Table AA.13 Age standardisation of data using the indirect method (a), (b)

Variable	NSW (c)	Vic	Qld	WA	SA	Tas	ACT (c)	NT	Aust
Step 1: Calculate Ri									
Ri — Standard population age-specific imprisonment rates (30 June 2001)									
17–20 years									124.6
18–20 years									179.4
20–24 years									359.4
25–29 years									345.2
30–34 years									271.8
35–39 years									193.6
40–44 years									131.6
45–54 years									77.3
55+ years									23.5

Step 2: p i * Ri

Indigenous										
17/18–20 years	11.7	2.6	12.2	5.8	2.2	1.6	0.4	4.6	46.6	
20–24 years	51.0	11.4	48.6	26.8	10.6	6.9	1.6	22.3	179.2	
25–29 years	36.8	8.7	37.4	20.6	7.8	4.9	1.2	19.1	136.4	
30–34 years	25.5	6.0	27.3	13.7	5.6	2.9	1.0	13.4	95.3	
35–39 years	19.7	4.5	19.5	10.0	3.9	2.2	0.7	9.2	69.8	
40–44 years	11.3	2.6	10.8	5.8	2.2	1.4	0.4	4.9	39.4	
45–54 years	10.6	2.3	9.4	5.2	2.0	1.4	0.3	4.1	35.4	
55+ years	2.9	0.6	2.4	1.3	0.5	0.3	0.1	1.1	9.3	
Total	169	39	168	89	35	22	6	79	611	

Table AA.13

Table AA.13 Age standardisation of data using the indirect method (a), (b)

Variable	NSW (c)	Vic	Qld	WA	SA	Tas	ACT (c)	NT	Aust
Non-Indigenous									
17/18–20 years	323.3	257.1	207.7	102.8	74.9	22.2	18.9	6.9	1 105.1
20–24 years	1 665.3	1 345.9	1 033.9	528.1	387.0	105.8	104.9	41.9	5 212.8
25–29 years	1 629.4	1 273.6	967.6	488.1	339.6	92.5	98.0	45.2	4 934.0
30–34 years	1 294.0	999.8	762.0	383.9	265.7	75.0	69.6	36.0	3 886.0
35–39 years	966.7	770.5	591.5	303.0	214.0	63.2	50.5	25.9	2 985.3
40–44 years	632.5	495.5	387.0	201.9	147.1	43.2	31.8	16.5	1 955.6
45–54 years	727.8	553.3	439.9	228.2	173.0	54.7	36.3	18.8	2 232.0
55+ years	402.5	301.6	231.6	114.0	101.4	31.7	16.5	6.0	1 205.2
Total	7 642	5 997	4 621	2 350	1 703	488	427	197	23 516
Step 3: $C/\sum pi*ri$									
Indigenous	11.9	6.1	8.7	17.8	11.8	3.2	3.7	9.1	10.6
Non-Indigenous	1.0	0.7	0.9	0.9	0.8	1.0	0.4	0.8	0.8
Step 4: Result step 3*R									
Age standardised rate									
Indigenous	1 815.6	935.8	1 304.2	2 728.4	1 809.3	496.8	563.2	1 398.1	1 630.4
Non-Indigenous	145.7	100.4	131.8	144.4	129.8	147.0	57.3	120.5	128.2
Rate ratio (d)	12.5	9.3	9.9	18.9	13.9	3.4	9.8	11.6	12.7

(a) Rates are based on the indirect standardisation method, applying age-group imprisonment rates derived from Prison Census data.

(b) Rates are based on the daily average prisoner, periodic detainee or offender populations supplied by states and territories, calculated against adult population figures at December 2007 for people aged 17 years or over for Queensland and for people aged 18 or over in all other jurisdictions, reflecting the age at which people are remanded or sentenced to adult custody. (Source: ABS National Centre for Crime and Justice Statistics).

(c) NSW figures exclude ACT prisoners held in NSW prisons. ACT data are presented as total prisoners.

(d) The rate ratio is calculated by dividing the Indigenous age standardised rate by the non-Indigenous age standardised rate.

Source: ABS (unpublished), derived from *Australian Demographic Statistics, December Quarter 2007*, Cat. no. 3101.0; ABS (unpublished) derived from *Experimental Projections Aboriginal and Torres Strait Islander Population*, Cat. no. 3231.0; ABS (unpublished), derived from *Prisoners in Australia*, Cat. no. 4517.0; State and Territory governments (unpublished); table 8A.1; 2009 Report, table AA.28.