
6 Police services

CONTENTS

Indigenous data in the Police services chapter	154
Framework of performance indicators	154
Indigenous staffing	155
Deaths in police custody and Indigenous deaths in custody	157
Definitions of key terms and indicators	159
List of attachment tables	159

Attachment tables

Attachment tables are identified in references throughout this Indigenous Compendium by an 'A' prefix (for example, in this chapter, table 6A.1). As the data are directly sourced from the 2012 Report, the Compendium also notes where the original table, figure or text in the 2012 Report can be found. For example, where the Compendium refers to '2012 Report, p. 6.1', this is page 1 of chapter 6 of the 2012 Report, and '2012 Report, table 6A.1' is table 1 of attachment 6A of the 2012 Report. A full list of attachment tables referred to in the Compendium is provided at the end of this chapter, and the attachment tables are available from the Review website at www.pc.gov.au/gsp.

The Police services chapter (chapter 6) in the *Report on Government Services 2012* (2012 Report) reports on the performance of police services in Australia. Data are reported for Indigenous people for a subset of the performance indicators reported in that chapter — those data are compiled and presented here.

Police services are the principal means through which State and Territory governments pursue the achievement of a safe and secure environment for the community. This is through the investigation of criminal offences, response to life threatening situations, provision of services to the judicial process and provision of road safety and traffic management. Police services also respond to more general needs in the community — for example, working with emergency management organisations and a wide range of government services and community groups, and

advising on general policing and crime issues. Additionally, police are involved in various activities which aim to improve public safety and prevent crime.

Indigenous data in the Police services chapter

The Police services chapter in the 2012 Report contains the following data for Indigenous people:

- Indigenous staffing
- proportion of police staff from Indigenous backgrounds relative to the proportion of the general population who are from Indigenous backgrounds, 2010-11
- deaths in police custody and Indigenous deaths in custody 2006-07 to 2010-11.

Framework of performance indicators

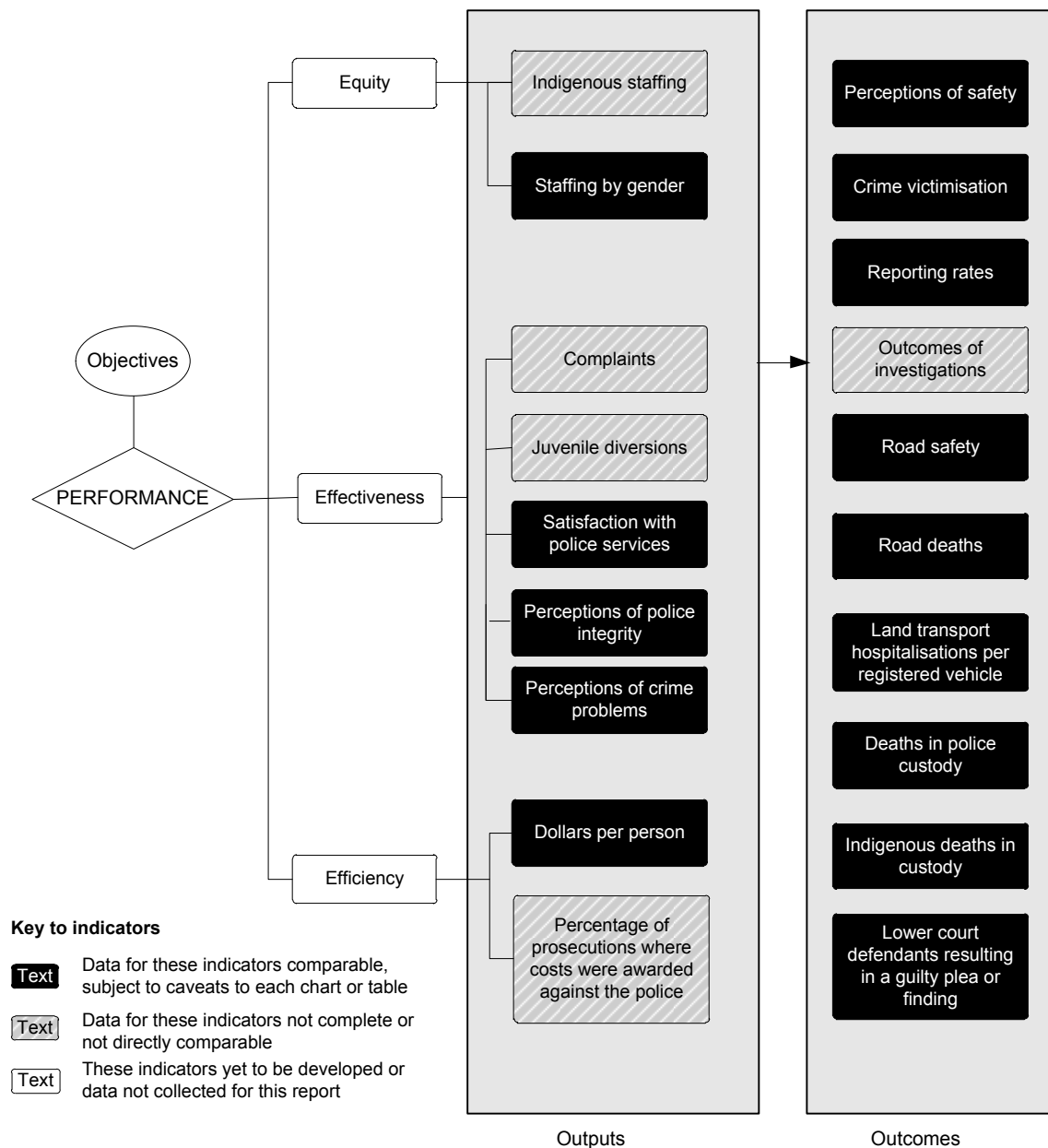
The Police services performance indicator framework outlined in figure 6.1 identifies the principal police activity areas considered in the 2012 Report. Data for Indigenous people are reported for a subset of the performance indicators and are presented here. It is important to interpret these data in the context of the broader performance indicator framework. The framework shows which data are comparable. For data that are not considered directly comparable, the text includes relevant caveats and supporting commentary.

Indicator boxes presented throughout the chapter provide information about the reported indicators. As these are sourced directly from the 2012 Report, they might include references to data not reported for Indigenous people and therefore not included in this Compendium.

The Report's statistical appendix contains data that may assist in interpreting the performance indicators presented in this chapter. These data cover a range of demographic and geographic characteristics, including age profile, geographic distribution of the population, income levels, education levels, tenure of dwellings and cultural heritage (including Indigenous and ethnic status) (appendix A).

Indicators relevant to all police services are discussed in 2012 Report, section 6.3. These include two 'equity' output indicators 'Indigenous staffing' and 'police staff by gender'.

Figure 6.1 Police services performance indicator framework



Source: 2012 Report, figure 6.3, p. 6.7.

Indigenous staffing

‘Indigenous staffing’ is an indicator of governments’ objective that provision of services occurs in an equitable manner (box 6.1). Indigenous people might feel more comfortable in ‘accessing’ police services when they are able to deal with Indigenous police staff.

Box 6.1 Indigenous staffing

'Indigenous staffing' is defined as the proportion of police staff (operational plus non-operational) from Indigenous backgrounds compared to the proportion of people aged 20–64 years who are from Indigenous backgrounds. These data are used because a significantly larger proportion of the Indigenous population falls within the younger non-working age groupings compared with the non-Indigenous population. Readily available ABS population projections of people aged 20–64 years provide a proxy for the estimated working population.

A proportion of police staff from Indigenous backgrounds closer to the proportion of people aged 20–64 years who are from Indigenous backgrounds represents a more equitable outcome.

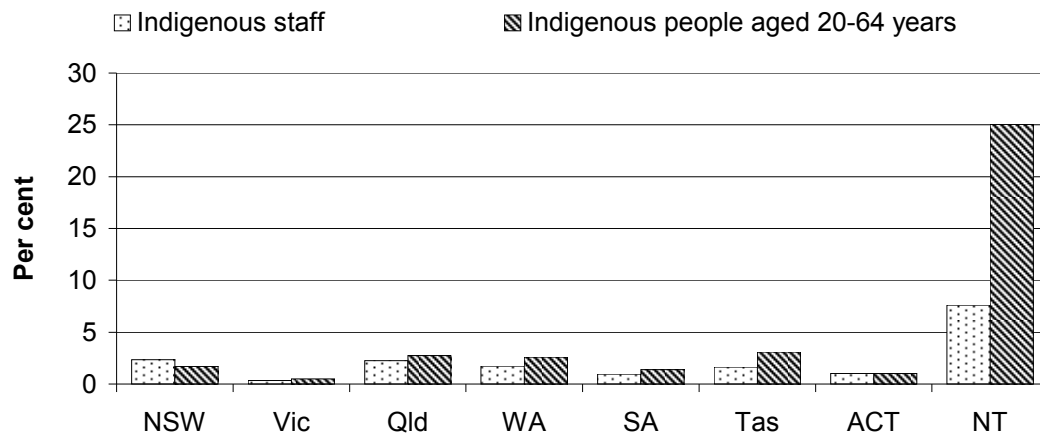
The process of identifying Indigenous staff members generally relies on self-identification as being Aboriginal and/or Torres Strait Islander. Where Indigenous people are asked to identify themselves, the accuracy of the data will partly depend on how they perceive the advantages (or disadvantages) of identification and whether these perceptions change over time. Many factors will influence the willingness of Indigenous people to access police services, including familiarity with procedures for dealing with police and confidence in the effectiveness of police services.

Data reported for this indicator are not directly comparable.

Data quality information for this indicator is under development.

The proportion of Indigenous police staff in 2010-11 was similar to the representation of Indigenous people in the population aged 20–64 years for most jurisdictions except the NT (figure 6.2).

Figure 6.2 **Proportions of Indigenous staff in 2010-11 and Indigenous population aged 20–64 years^{a, b, c}**



^a Indigenous staff numbers relate to those staff who self-identify as being of Aboriginal and/or Torres Strait Islander descent. ^b Information on Indigenous status is collected only at the time of recruitment. ^c Data comprise all FTE staff except in the NT, where data are based on a headcount at 30 June.

Source: ABS (2009) *Experimental Estimates and Projections, Indigenous population aged 20–64 years* Cat. no. 3238.0 (Series B); State and Territory governments (unpublished); table 6A.17; 2012 Report, figure 6.5, p. 6.11.

Time series data for police Indigenous staffing are reported in tables 6A.1–6A.8 and 6A.17.

Deaths in police custody and Indigenous deaths in custody

‘Deaths in police custody’, and ‘Indigenous deaths in police custody’ are indicators of governments’ objective to provide safe custody for alleged offenders, and ensure fair and equitable treatment for both victims and alleged offenders (box 6.2).

Box 6.2 Deaths in police custody, and Indigenous deaths in police custody

‘Deaths in police custody’ and ‘Indigenous deaths in police custody’ are defined as the number of non-Indigenous and Indigenous deaths in police custody and custody-related operations.

A low or decreasing number of deaths in custody and custody-related operations is desirable.

Data reported for these indicators are comparable.

Data quality information for this indicator is under development.

Nationally, there were 17 deaths in police custody and custody-related operations in 2010-11. Of these 17 deaths, 7 were Indigenous (table 6.1).

Table 6.1 Deaths in police custody and custody-related operations^{a, b}

	<i>NSW^c</i>	<i>Vic^d</i>	<i>Qld</i>	<i>WA</i>	<i>SA</i>	<i>Tas</i>	<i>ACT</i>	<i>NT</i>	<i>Aust</i>
Non-Indigenous deaths									
2006-07	12	6	3	4	4	–	1	–	30
2007-08	8	8	4	4	2	–	–	3	30
2008-09	8	3	3	7	4	–	–	1	26
2009-10	5	3	2	2	1	–	1	–	15
2010-11	6	–	–	1	2	1	–	–	10
Indigenous deaths									
2006-07	–	1	1	–	–	–	–	1	3
2007-08	–	–	1	–	2	–	–	2	5
2008-09	–	–	1	1	2	–	–	4	8
2009-10	–	–	–	2	–	–	–	1	3
2010-11	1	–	1	4	–	–	–	1	7
Total Indigenous deaths 2006–07 to 2010-11^c	1	1	4	7	4	–	–	9	26
Total deaths									
2006-07	12	7	4	4	4	–	1	1	33
2007-08	8	8	5	4	4	–	–	5	35
2008-09	8	3	4	8	6	–	–	5	34
2009-10	5	3	2	4	1	–	1	2	18
2010-11	7	–	1	5	2	1	–	1	17
Total deaths 2006–07 to 2010-11	40	21	16	25	17	1	2	14	137

^a Deaths in police custody include: deaths in institutional settings (for example, police stations/lockups and police vehicles, or during transfer to or from such an institution, or in hospitals following transfer from an institution); and other deaths in police operations where officers were in close contact with the deceased (for example, most raids and shootings by police). Deaths in custody-related operations cover situations where officers did not have such close contact with the person as to be able to significantly influence or control the person's behaviour (for example, most sieges and most cases where officers were attempting to detain a person, such as pursuits). ^b These AIC data for 2010-11 are preliminary (unpublished) and final data in other publications might differ. Data for historic years were revised during 2010 and are now presented on a financial year basis so they differ from those in earlier reports. ^c In 2006, two deaths occurred in NSW for which Indigenous status has not been determined. ^d Data for Victoria Police is provisional and unconfirmed.

– Nil or rounded to zero.

Source: AIC (various years, unpublished) *Deaths in Custody*, Australia; table 6A.38; 2012 Report, table 6.3, p. 6.50.

Definitions of key terms and indicators

Full time equivalent (FTE)	The equivalent number of full time staff required to provide the same hours of work as performed by staff actually employed. A full time staff member is equivalent to a full time equivalent of one, while a part time staff member is greater than zero but less than one.
Indigenous staff	Number of staff who are identified as being of Aboriginal or Torres Strait Islander descent.
Offender	In the Police Services chapter, the term 'offender' refers to a person who is alleged to have committed an offence. This definition is not the same as the definition used in chapter 8 (Corrective services).

List of attachment tables

Attachment tables for data within this chapter are contained in the attachment to the Compendium. These tables are identified in references throughout this chapter by a '6A' prefix (for example, table 6A.1 is table 1 in the School education attachment). Attachment tables are on the Review website (www.pc.gov.au/gsp).

Table 6A.1	Police service expenditure, staff and asset descriptors, NSW
Table 6A.2	Police service expenditure, staff and asset descriptors, Victoria
Table 6A.3	Police service expenditure, staff and asset descriptors, Queensland
Table 6A.4	Police service expenditure, staff and asset descriptors, WA
Table 6A.5	Police service expenditure, staff and asset descriptors, SA
Table 6A.6	Police service expenditure, staff and asset descriptors, Tasmania
Table 6A.7	Police service expenditure, staff and asset descriptors, ACT
Table 6A.8	Police service expenditure, staff and asset descriptors, NT
Table 6A.17	Indigenous, sworn and unsworn police staff
Table 6A.38	Number of deaths in police custody and custody-related operations

6A Police services — attachment

Tables in this attachment are sourced from the Police services attachment of the 2012 Report. Table numbers refer to the 2012 Report, for example, a reference to ‘2012 Report, table 6A.15’ refers to attachment table 15 of attachment 6A of the 2012 Report.

Definitions for indicators and descriptors in this attachment are in the Police services chapter of the Compendium.

Data in this Compendium are examined by the Police Services Working Group, but have not been formally audited by the Secretariat. Unsourced information was obtained from the Australian, State and Territory governments.

This file is available in Adobe PDF format on the Review web page (www.pc.gov.au/gsp).

Attachment contents

Table 6A.1	Police service expenditure, staff and asset descriptors, NSW
Table 6A.2	Police service expenditure, staff and asset descriptors, Victoria
Table 6A.3	Police service expenditure, staff and asset descriptors, Queensland
Table 6A.4	Police service expenditure, staff and asset descriptors, WA
Table 6A.5	Police service expenditure, staff and asset descriptors, SA
Table 6A.6	Police service expenditure, staff and asset descriptors, Tasmania
Table 6A.7	Police service expenditure, staff and asset descriptors, ACT
Table 6A.8	Police service expenditure, staff and asset descriptors, NT
Table 6A.17	Indigenous, sworn and unsworn police staff
Table 6A.38	Number of deaths in police custody and custody-related operations

Table 6A.1

Table 6A.1 Police service expenditure, staff and asset descriptors, NSW

	Unit	2005-06	2006-07	2007-08	2008-09	2009-10	2010-11
Civilian	FTE	1 253	1 247	1 617	1 927	1 731	1 685
Other	FTE	125	124	140	163	154	169
Operational FTE staff	FTE	15 389	16 062	16 317	16 677	16 802	17 033
Non-operational FTE staff							
Sworn	FTE	623	642	460	807	370	418
Civilian	FTE	2 531	2 580	2 017	1 639	1 751	1 787
Other	FTE	27	27	29	30	32	28
Non-operational FTE staff	FTE	3 181	3 249	2 506	2 476	2 153	2 233
Total staff	FTE	18 570	19 311	18 823	19 153	18 955	19 266
Indigenous FTE staff							
Operational	FTE	246	270	219	230	271	328
Non-operational	FTE	na	na	61	78	50	125
Indigenous FTE staff	FTE	246	270	280	308	321	453
Assets by value							
Land	\$'000	292 328	363 824	358 536	403 692	442 873	440 886
Buildings and fittings	\$'000	478 733	513 345	553 628	601 279	627 697	629 166
Other	\$'000	488 092	502 327	519 508	529 511	534 112	528 949
Total value of assets	\$'000	1 259 153	1 379 496	1 431 672	1 534 482	1 604 682	1 599 001

(a) Salaries and payments in the nature of salaries in include long service leave, workers' compensation insurance and fringe benefits tax.

(b) User cost of capital is calculated at an opportunity cost of 8 per cent per annum on total value of assets (excluding land).

(c) Comprises salaries and payments in the nature of salary, other recurrent expenditure, and capital expenditure.

(d) Comprises salaries and payments in the nature of salary, other recurrent expenditure, depreciation, and the user cost of capital.

(e) Data are based on headcount prior to 2007-08 and thereafter FTE as at 30 June. Indigenous staff prior to 2007-08 cannot be split between operational and non-operational. 'Operational staff' includes non-operational Indigenous staff prior to 2007-08.

na Not available. – Nil or rounded to zero.

Source: NSW Government (unpublished).

Table 6A.2

Table 6A.2 Police service expenditure, staff and asset descriptors, Victoria

Expenditure	Unit	2005-06	2006-07	2007-08	2008-09	2009-10	2010-11
Recurrent expenditure							
Salaries and payments in the nature of salaries	\$m						
Salaries and related payments	\$m	906.4	931.3	981.4	1 040.7	1 117.1	1 150.2
Superannuation	\$m	101.0	114.3	116.1	120.2	122.3	138.1
Payroll tax	\$m	49.7	50.7	53.0	52.9	57.2	63.9
Total salaries and payments	\$m	1 057.1	1 096.3	1 150.5	1 213.7	1 296.6	1 352.1
Other recurrent expenditure	\$m	376.5	403.5	414.2	442.5	489.0	529.1
Depreciation	\$m	35.5	44.1	54.6	52.9	56.8	62.1
Total recurrent expenditure	\$m	1 469.1	1 543.9	1 619.2	1 709.1	1 842.5	1 943.4
Net recurrent expenditure							
Revenue from own sources (ROS)	\$m	34.3	17.4	15.8	11.4	13.8	13.9
Total recurrent expenditure less ROS and payroll tax	\$m	1 385.2	1 475.8	1 550.4	1 644.9	1 771.4	1 865.6
Capital expenditure							
User cost of capital (a)	\$m	45.2	53.6	50.5	53.1	58.0	74.0
Capital expenditure	\$m	119.3	101.3	62.6	86.7	120.8	98.6
Expenditure aggregates							
Total cash expenditure (b)	\$m	1 552.9	1 601.1	1 627.2	1 742.9	1 906.5	1 979.8
Total accrual costs (c)	\$m	1 514.3	1 597.5	1 669.7	1 762.2	1 900.4	2 017.4
Staffing costs							
Average police staff costs	\$	86 190	87 008	90 234	94 309	98 260	97 103
Average non-police staff costs	\$	48 270	51 931	57 052	60 454	60 568	62 196

Table 6A.2

Table 6A.2 Police service expenditure, staff and asset descriptors, Victoria

	Unit	2005-06	2006-07	2007-08	2008-09	2009-10	2010-11
Staff by Indigenous and operational status							
Operational FTE staff							
Sworn	FTE	10 420	10 657	10 554	10 547	10 968	11 752
Civilian (d)	FTE	330	323	354	386	1 825	2 139
Other	FTE	145	146	144	141	152	153
Operational FTE staff	FTE	10 895	11 126	11 052	11 074	12 945	14 044
Non-operational FTE staff							
Sworn	FTE	342	336	467	481	325	145
Civilian	FTE	1 962	2 015	2 079	2 175	857	602
Other	FTE	246	209	157	171	253	272
Non-operational FTE staff	FTE	2 550	2 560	2 703	2 827	1 435	1 019
Total staff	FTE	13 445	13 686	13 755	13 901	14 380	15 063
Indigenous FTE staff (e)							
Operational	FTE	na	na	na	na	34	50
Non-operational	FTE	na	na	na	na	1	1
Indigenous FTE staff	FTE	na	na	na	na	35	51
Assets by value (f)							
Land	\$'000	177 671	219 770	227 912	225 476	225 823	373 338
Buildings and fittings	\$'000	444 069	541 576	522 449	551 617	602 997	802 766
Other	\$'000	121 129	128 556	108 883	112 268	121 651	122 143
Total value of assets	\$'000	742 869	889 902	859 244	889 361	950 471	1 298 247

(a) User cost of capital is calculated at an opportunity cost of 8 per cent per annum on total value of assets (excluding land).

Table 6A.2

Table 6A.2 Police service expenditure, staff and asset descriptors, Victoria

	Unit	2005-06	2006-07	2007-08	2008-09	2009-10	2010-11
(b)	Comprises salaries and payments in the nature of salary, other recurrent expenditure, and capital expenditure.						
(c)	Comprises salaries and payments in the nature of salary, other recurrent expenditure, depreciation, and the user cost of capital.						
(d)	A comprehensive review of civilian position descriptions, relative to the definition of operational staff contained in the Police Services Working Group Data Manual, has led to the reclassification of a significant number of those positions as operational as distinct from non-operational in 2009-10 data. Data for previous years have not been revised. Organisational restructures have resulted in civilian support duties being more closely aligned with sworn operational areas and an increase in the relative number of operational civilians.						
(e)	The introduction of a new human resources system has supported initial capture of data relating to Indigenous status. In this first year of reporting, the data are indicative only. Indigenous and non-Indigenous staff were unable to be separated in Victoria prior to 2009-10. In 2010-11 data for indigenous staff probably not reliable (provided on a voluntary basis).						
(f)	Land and buildings revalued in 2010-11.						
	na Not available.						

Source: Victorian Government (unpublished).

Table 6A.3

Table 6A.3 Police service expenditure, staff and asset descriptors, Queensland

Expenditure	Unit	2005-06	2006-07	2007-08	2008-09 (a)	2009-10	2010-11
Recurrent expenditure							
Salaries and payments in the nature of salaries							
Salaries and related payments	\$m	776.6	838.9	917.9	1 003.5	1 094.2	1 179.0
Superannuation	\$m	102.4	109.7	119.9	127.6	141.2	149.6
Payroll tax	\$m	40.7	44.2	48.3	53.0	56.9	61.3
Total salaries and payments	\$m	919.8	992.7	1 086.0	1 184.1	1 292.3	1 389.9
Other recurrent expenditure	\$m	222.6	231.9	267.6	274.5	312.0	309.0
Depreciation (b)	\$m	41.6	54.9	62.6	68.3	67.8	86.3
Total recurrent expenditure	\$m	1 183.9	1 279.6	1 416.2	1 526.9	1 672.1	1 785.1
Net recurrent expenditure							
Revenue from own sources (ROS)	\$m	50.9	55.9	67.6	72.5	73.3	79.0
Total recurrent expenditure less ROS and payroll tax	\$m	1 092.3	1 179.5	1 300.3	1 401.3	1 541.9	1 644.9
Capital expenditure							
User cost of capital (c)	\$m	72.4	86.6	93.3	104.3	104.9	108.0
Capital expenditure	\$m	106.9	120.3	171.6	224.9	149.8	149.6
Expenditure aggregates							
Total cash expenditure (d)	\$m	1 249.2	1 345.0	1 525.2	1 683.5	1 754.1	1 848.4
Total accrual costs (e)	\$m	1 256.4	1 366.1	1 509.5	1 631.2	1 777.0	1 893.1
Staffing costs							
Average police staff costs	\$	83 544	86 038	90 481	93 948	100 570	106 787
Average non-police staff costs	\$	49 542	53 308	53 878	56 849	62 527	64 522

Table 6A.3

Table 6A.3 Police service expenditure, staff and asset descriptors, Queensland

	Unit	2005-06	2006-07	2007-08	2008-09 (a)	2009-10	2010-11
Staff by Indigenous and operational status							
Operational FTE staff							
Sworn	FTE	8 206	8 467	9 129	9 450	9 808	9 899
Civilian (f)	FTE	1 408	1 480	1 548	1 592	2 954	2 995
Other	FTE	153	296	459	501	325	326
Operational FTE staff	FTE	9 767	10 243	11 136	11 543	13 087	13 220
Non-operational FTE staff							
Sworn	FTE	821	853	566	674	485	486
Civilian	FTE	1 452	1 376	1 368	1 427	466	555
Other	FTE	330	428	500	578	368	478
Non-operational FTE staff	FTE	2 603	2 657	2 434	2 679	1 319	1 519
Total staff	FTE	12 370	12 900	13 570	14 222	14 406	14 739
Indigenous FTE staff							
Operational	FTE	na	286	310	301	316	311
Non-operational	FTE	na	19	20	20	22	21
Indigenous FTE staff (g)	FTE	na	305	330	321	338	332
Assets by value							
Land	\$'000	274 214	416 561	500 749	532 321	508 884	471 643
Buildings and fittings	\$'000	788 025	917 442	897 933	952 335	981 641	978 477
Other	\$'000	117 246	164 618	267 971	351 094	329 268	371 039
Total value of assets	\$'000	1 179 485	1 498 621	1 666 653	1 835 750	1 819 793	1 821 159

(a) Salaries, payroll tax, other recurrent expenditure, revenue from own sources, capital expenditure, value of land and other assets, and depreciation for 2008-09 have been adjusted and will therefore differ from those published in the 2010 RoGS. Data revision was required mainly due to audit requirements and updated major project expenses, changed treatment of non reciprocal grants and prepayment of government appropriations, and changes in salary recoveries.

Table 6A.3

Table 6A.3 Police service expenditure, staff and asset descriptors, Queensland

	Unit	2005-06	2006-07	2007-08	2008-09 (a)	2009-10	2010-11
(b)	Depreciation is calculated on a straight-line basis so as to write off net cost or revalued amount of each depreciable asset, less its estimated residual value, progressively over its estimated useful life.						
(c)	User cost of capital is calculated at an opportunity cost of 8 per cent per annum on total value of assets (excluding land).						
(d)	Comprises salaries and payments in the nature of salary, other recurrent expenditure, and capital expenditure.						
(e)	Comprises salaries and payments in the nature of salary, other recurrent expenditure, depreciation, and the user cost of capital.						
(f)	A comprehensive review of civilian position descriptions, relative to the definition of operational staff contained in the Police Services Working Group Data Manual, has led to the reclassification of a significant number of those positions as operational as distinct from non-operational in 2009-10 data. Data for previous years have not been revised.						
(g)	Indigenous staff numbers relate to those staff who self identify as being of Aboriginal or Torres Strait Islander descent. The Queensland Police Service was unable to validate Indigenous staff by operational status prior to 2006-07.						
	na Not available.						

Source: Queensland Government (unpublished).

Table 6A.4

Table 6A.4 Police service expenditure, staff and asset descriptors, WA

Expenditure	Unit	2005-06	2006-07	2007-08	2008-09	2009-10	2010-11
Recurrent expenditure							
Salaries and payments in the nature of salaries							
Salaries and related payments	\$m	457.5	491.1	558.0	626.5	661.9	721.2
Superannuation	\$m	44.4	47.7	53.2	54.3	60.8	60.7
Payroll tax (a)	\$m	25.7	27.6	31.2	34.6	40.1	43.2
Total salaries and payments	\$m	527.6	566.4	642.3	715.4	762.8	825.1
Other recurrent expenditure (b)	\$m	170.4	197.4	181.1	201.9	216.3	256.8
Depreciation (c)	\$m	20.3	28.1	37.8	40.9	40.0	40.4
Total recurrent expenditure	\$m	718.3	791.9	861.2	958.2	1 019.0	1 122.3
Net recurrent expenditure							
Revenue from own sources (ROS)	\$m	18.9	24.1	25.1	25.7	30.9	37.3
Total recurrent expenditure less ROS and payroll tax	\$m	673.8	740.2	804.9	898.0	948.1	1 041.8
Capital expenditure							
User cost of capital (d)	\$m	31.2	37.0	41.8	45.6	46.2	50.7
Capital expenditure	\$m	82.9	80.0	65.0	66.9	76.8	67.2
Expenditure aggregates							
Total cash expenditure (e)	\$m	780.9	843.8	888.4	984.2	1 055.9	1 149.1
Total accrual costs (f)	\$m	749.5	828.9	903.0	1 003.8	1 065.2	1 173.0
Staffing costs							
Average police staff costs (h)	\$	89 766	94 024	99 659	105 901	113 558	119 389
Average non-police staff costs (i)	\$	58 735	61 742	64 857	66 908	74 154	75 102

POLICE SERVICES

Table 6A.4

Table 6A.4 Police service expenditure, staff and asset descriptors, WA

	Unit	2005-06	2006-07	2007-08	2008-09	2009-10	2010-11
Staff by Indigenous and operational status							
Operational FTE staff							
Sworn	FTE	4 555	4 597	4 813	5 176	5 118	5 157
Civilian	FTE	726	761	866	1 034	1 097	1 131
Other	FTE	113	76	31	114	167	206
Operational FTE staff	FTE	5 394	5 434	5 710	6 324	6 382	6 494
Non-operational FTE staff							
Sworn	FTE	424	474	569	346	353	505
Civilian	FTE	503	580	704	767	608	594
Other	FTE	32	35	33	37	36	55
Non-operational FTE staff	FTE	959	1 089	1 306	1 150	997	1 154
Total staff	FTE	6 353	6 523	7 016	7 474	7 379	7 648
Indigenous FTE staff							
Operational	FTE	169	152	141	124	136	125
Non-operational	FTE	14	14	7	12	13	8
Indigenous FTE staff (g)	FTE	183	166	148	136	149	133
Assets by value							
Land	\$'000	97 235	130 803	169 936	174 418	151 831	179 627
Buildings and fittings	\$'000	233 685	288 689	340 759	404 272	405 922	452 627
Other	\$'000	156 116	173 268	181 612	165 267	171 305	181 312
Total value of assets	\$'000	487 036	592 760	692 307	743 957	729 058	813 566

(a) WA does not pay payroll tax, however the 'notional' payroll tax rate for WA has been estimated based on 5.5 per cent of payroll costs.

(b) Includes training costs (previously reported under salaries).

(c) Depreciation based on the straight-line method of calculation. Data for 2007-08 include \$3.1 million in impairment expense.

Table 6A.4

Table 6A.4 Police service expenditure, staff and asset descriptors, WA

	Unit	2005-06	2006-07	2007-08	2008-09	2009-10	2010-11
--	------	---------	---------	---------	---------	---------	---------

- (d) User cost of capital is calculated at an opportunity cost of 8 per cent per annum on total value of assets (excluding land).
- (e) Comprises salaries and payments in the nature of salary, other recurrent expenditure, and capital expenditure.
- (f) Comprises salaries and payments in the nature of salary, other recurrent expenditure, depreciation, and the user cost of capital.
- (g) Employees Indigenous status is provided on a voluntary basis.
- (h) Calculated by dividing sworn police staff expenditure by sworn police numbers.
- (i) Calculated by dividing non-police staff expenditure by non-police staff numbers.

Source: WA Government (unpublished).

Table 6A.5

Table 6A.5 Police service expenditure, staff and asset descriptors, SA

	Unit	2005-06	2006-07	2007-08	2008-09	2009-10	2010-11
Expenditure							
Recurrent expenditure							
Salaries and payments in the nature of salaries							
Salaries and related payments (a)	\$m	342.0	361.2	400.7	436.7	444.4	475.4
Superannuation (a)	\$m	47.8	48.1	51.3	55.6	54.4	58.0
Payroll tax (a)	\$m	20.3	21.0	22.1	23.2	24.0	25.8
Total salaries and payments	\$m	410.2	430.3	474.1	515.5	522.9	559.2
Other recurrent expenditure	\$m	95.4	101.2	106.7	110.3	119.7	124.4
Depreciation (b)	\$m	12.2	12.4	15.0	17.2	17.3	15.6
Total recurrent expenditure (c)	\$m	517.7	543.9	595.8	643.0	659.8	699.2
Net recurrent expenditure							
Revenue from own sources (ROS) (d)	\$m	60.1	56.7	57.0	61.6	70.5	62.3
Total recurrent expenditure less ROS and payroll tax	\$m	437.3	466.2	516.7	558.1	565.3	611.1
Capital expenditure							
User cost of capital (e)	\$m	10.8	11.1	13.9	13.3	12.7	15.6
Capital expenditure (f)	\$m	9.0	15.5	13.7	17.3	36.7	60.0
Expenditure aggregates							
Total cash expenditure	\$m	514.6	547.0	594.4	643.2	679.3	743.6
Total accrual costs	\$m	528.5	555.0	609.6	656.3	672.5	714.7
Staffing costs							
Average police staff costs	\$	88 869	92 649	100 564	107 338	103 277	111 787
Average non-police staff costs	\$	51 121	53 433	49 412	52 160	59 549	59 747

Table 6A.5

Table 6A.5 Police service expenditure, staff and asset descriptors, SA

	Unit	2005-06	2006-07	2007-08	2008-09	2009-10	2010-11
Staff by Indigenous and operational status							
Operational FTE staff							
Sworn	FTE	3 862	3 842	3 986	4 083	4 265	4 313
Civilian	FTE	720	730	748	774	813	805
Other	FTE	30	28	27	28	27	25
Operational FTE staff	FTE	4 612	4 600	4 761	4 885	5 105	5 143
Non-operational FTE staff							
Sworn	FTE	113	127	130	126	114	76
Civilian	FTE	280	260	282	272	233	222
Other	FTE	83	153	160	148	113	95
Non-operational FTE staff	FTE	476	540	572	546	460	393
Total staff	FTE	5 088	5 140	5 333	5 431	5 565	5 536
Indigenous FTE staff							
Operational	FTE	59	59	58	56	53	52
Non-operational	FTE	-	3	5	2	1	1
Indigenous FTE staff	FTE	59	62	63	58	54	53
Assets by value (g)							
Land	\$'000	33 260	33 574	54 334	55 143	55 700	66 367
Buildings and fittings	\$'000	98 990	100 149	139 237	133 304	127 260	157 834
Other	\$'000	35 564	38 633	34 046	32 849	30 896	36 609
Total value of assets	\$'000	167 814	172 356	227 617	221 296	213 856	260 810

(a) The salaries, superannuation and payroll tax increase in 2010-11 mainly reflects the impact of a new Police Enterprise Bargaining Agreement.

(b) All assets are depreciated using the straight-line method.

Table 6A.5 Police service expenditure, staff and asset descriptors, SA

	<i>Unit</i>	2005-06	2006-07	2007-08	2008-09	2009-10	2010-11
(c)	The total recurrent expenditure increase in 2010-11 mainly reflects the impact of a new Police Enterprise Bargaining Agreement and increases to employee benefits provisions (annual and long service leave and workers compensation).						
(d)	The increase relates mainly to funding associated with police facilities in the APY Lands.						
(e)	User cost of capital is calculated at an opportunity cost of 8 per cent per annum on total value of assets (excluding land).						
(f)	The increase in 2010-11 mainly reflects an increase in expenditure on the Police Academy Redevelopment.						
(g)	The increase in 2010-11 mainly reflects a revaluation of land, buildings, leasehold improvements and aircraft and assets capitalised for the first time from Works in Progress.						

Source: SA Government (unpublished).

Table 6A.6

Table 6A.6 Police service expenditure, staff and asset descriptors, Tasmania

	Unit	2005-06	2006-07	2007-08	2008-09	2009-10	2010-11
Expenditure							
Recurrent expenditure							
Salaries and payments in the nature of salaries							
Salaries and related payments	\$m	99.8	107.6	114.2	122.5	128.1	138.5
Superannuation	\$m	10.5	11.6	12.3	12.9	13.6	16.1
Payroll tax	\$m	6.5	7.2	7.4	8.1	8.5	9.1
Total salaries and payments	\$m	116.8	126.4	133.9	143.5	150.2	163.7
Other recurrent expenditure	\$m	31.1	33.5	39.0	38.5	46.6	48.4
Depreciation	\$m	2.6	2.6	4.3	4.5	5.2	6.6
Total recurrent expenditure	\$m	150.5	162.5	177.2	186.6	202.1	218.8
Net recurrent expenditure							
Revenue from own sources (ROS)	\$m	9.0	9.1	19.3	8.4	14.0	20.2
Total recurrent expenditure less ROS and payroll tax	\$m	134.9	146.3	150.5	170.0	179.6	189.5
Capital expenditure							
User cost of capital (a)	\$m	6.7	9.9	10.1	13.0	13.5	13.9
Capital expenditure	\$m	2.5	1.1	1.0	10.1	6.0	8.3
Expenditure aggregates							
Total cash expenditure (b)	\$m	150.4	161.0	173.8	192.1	202.8	220.4
Total accrual costs (c)	\$m	157.1	172.4	187.2	199.5	215.6	232.7
Staffing costs							
Average police staff costs	\$	77 536	85 469	91 531	95 916	101 724	108 612
Average non-police staff costs	\$	66 441	60 969	59 644	69 859	75 825	86 386

Table 6A.6

Table 6A.6 Police service expenditure, staff and asset descriptors, Tasmania

	Unit	2005-06	2006-07	2007-08	2008-09	2009-10	2010-11
Staff by Indigenous and operational status							
0 Operational FTE staff (d)							
Sworn	FTE	1 052	1 134	1 135	1 169	1 145	1 193
Civilian	FTE	221	241	240	230	227	222
Other	FTE	–	–	–	–	–	–
Operational FTE staff	FTE	1 273	1 375	1 375	1 399	1 372	1 415
Non-operational FTE staff							
Sworn	FTE	132	48	46	43	50	40
Civilian	FTE	155	141	146	137	126	123
Other	FTE	–	34	46	23	25	–
Non-operational FTE staff	FTE	287	223	238	203	201	163
Total staff	FTE	1 560	1 598	1 613	1 602	1 573	1 578
Indigenous FTE staff							
Operational	FTE	24	27	27	27	27	25
Non-operational	FTE	3	1	2	2	1	1
Indigenous FTE staff	FTE	27	28	29	29	28	26
Assets by value							
Land	\$'000	13 948	26 668	26 992	34 504	36 231	35 164
Buildings and fittings	\$'000	77 566	108 891	109 185	139 752	144 825	147 841
Other	\$'000	5 559	15 317	16 485	22 651	24 531	26 114
Total value of assets	\$'000	97 073	150 876	152 662	196 907	205 587	209 119

(a) User cost of capital is calculated at an opportunity cost of 8 per cent per annum on total value of assets (excluding land). Capital expenditure includes only capital appropriations.

Table 6A.6

Table 6A.6 Police service expenditure, staff and asset descriptors, Tasmania

<i>Unit</i>	2005-06	2006-07	2007-08	2008-09	2009-10	2010-11
-------------	---------	---------	---------	---------	---------	---------

- (b) Comprises salaries and payments in the nature of salary, other recurrent expenditure and capital expenditure.
 - (c) Comprises salaries and payments in the nature of salary, other recurrent expenditure, depreciation and the user cost of capital.
 - (d) The large increase in police numbers in 2006-07 is mainly due to two extra recruit (trainee) courses funded by the Government of Tasmania (in addition to the normal two courses) graduating during reporting period.
- Nil or rounded to zero. **na** Not available.

Source: Tasmanian Government (unpublished).

Table 6A.7

Table 6A.7 Police service expenditure, staff and asset descriptors, ACT

	Unit	2005-06	2006-07	2007-08	2008-09	2009-10	2010-11
Expenditure							
Recurrent expenditure							
Salaries and payments in the nature of salaries							
Salaries and related payments	\$m	62.9	68.8	79.2	85.4	88.4	91.4
Superannuation	\$m	9.7	9.0	9.9	12.0	13.7	16.6
Payroll tax (a)	\$m	—	—	—	—	—	—
Total salaries and payments	\$m	72.6	77.8	89.0	97.4	102.1	108.0
Other recurrent expenditure	\$m	22.0	23.4	26.7	28.2	34.7	36.0
Depreciation	\$m	2.3	2.4	2.4	3.5	3.4	4.5
Total recurrent expenditure	\$m	96.9	103.6	118.1	129.1	140.1	148.5
Net recurrent expenditure							
Revenue from own sources (ROS)	\$m	0.3	0.5	1.4	0.6	0.3	0.8
Total recurrent expenditure less ROS and payroll tax (b)	\$m	96.6	103.1	116.7	128.5	139.8	147.7
Capital expenditure							
User cost of capital (c)	\$m	3.0	3.1	3.5	3.3	3.4	3.6
Capital expenditure	\$m	5.6	1.8	2.0	4.3	8.9	15.6
Expenditure aggregates							
Total cash expenditure (d)	\$m	100.2	103.0	117.6	129.9	145.6	159.6
Total accrual costs (e)	\$m	99.9	106.7	121.7	132.4	143.5	152.1
Staffing costs							
Average police staff costs	\$	89 192	93 261	101 108	103 151	109 240	109 987
Average non-police staff costs	\$	88 728	93 922	100 373	102 787	108 974	105 475

Table 6A.7

Table 6A.7 Police service expenditure, staff and asset descriptors, ACT

	Unit	2005-06	2006-07	2007-08	2008-09	2009-10	2010-11
Staff by Indigenous and operational status							
Operational FTE staff							
Sworn	FTE	605	619	652	707	678	746
Civilian	FTE	93	92	98	112	120	112
Other	FTE	–	–	–	–	–	–
Operational FTE staff	FTE	698	711	750	819	798	858
Non-operational FTE staff							
Sworn	FTE	15	21	26	22	29	22
Civilian	FTE	102	101	106	104	108	111
Other	FTE	–	–	–	–	–	–
Non-operational FTE staff	FTE	117	122	132	126	137	133
Total staff	FTE	815	833	882	945	935	991
Indigenous FTE staff							
Operational	FTE	8	4	1	1	8	7
Non-operational	FTE	3	2	1	na	2	3
Indigenous FTE staff (f)	FTE	11	6	2	1	10	10
Assets by value							
Land	\$'000	7 889	7 751	25 850	27 681	27 681	27 685
Buildings and fittings	\$'000	36 613	36 908	40 857	36 368	38 233	38 115
Other	\$'000	1 096	2 407	3 396	5 360	4 720	6 935
Total value of assets	\$'000	45 598	47 066	70 103	69 409	70 634	72 735

(a) The Australian Federal Police (AFP) is exempt from paying payroll tax.

Table 6A.7 Police service expenditure, staff and asset descriptors, ACT

<i>Unit</i>	2005-06	2006-07	2007-08	2008-09	2009-10	2010-11
-------------	---------	---------	---------	---------	---------	---------

- (b) The ACT does not pay payroll tax, however a 'notional' payroll tax rate for the ACT has been estimated.
- (c) User cost of capital is calculated at an opportunity cost of 8 per cent per annum on total value of assets (excluding land).
- (d) Comprises salaries and payments in the nature of salary, other recurrent expenditure, and capital expenditure.
- (e) Comprises salaries and payments in the nature of salary, other recurrent expenditure, depreciation, and the user cost of capital.
- (f) During 2009-10, the AFP (incorporating ACT Policing) improved Indigenous status recording. Data now capture all Indigenous members and account for the FTE increase in 2009-10 from previous years.

na Not available. – Nil or rounded to zero.

Source: ACT Government (unpublished).

Table 6A.8

Table 6A.8 Police service expenditure, staff and asset descriptors, NT (a)

	Unit	2005-06	2006-07	2007-08	2008-09	2009-10	2010-11
Expenditure (b)							
Recurrent expenditure							
Salaries and payments in the nature of salaries							
Salaries and related payments	\$m	115.1	123.3	135.9	152.8	169.1	182.3
Superannuation	\$m	11.8	12.6	13.2	15.3	16.3	17.4
Payroll tax	\$m	7.2	7.6	8.3	8.9	9.8	10.2
Total salaries and payments	\$m	134.1	143.5	157.4	177.0	195.2	209.9
Other recurrent expenditure	\$m	34.6	37.4	46.6	55.5	55.5	55.6
Depreciation (c), (d)	\$m	5.9	6.4	7.0	8.1	9.2	12.3
Total recurrent expenditure (d)	\$m	174.6	187.2	211.1	240.6	259.9	277.8
Net recurrent expenditure							
Revenue from own sources (ROS)	\$m	16.0	18.7	27.0	26.8	35.4	41.6
Total recurrent expenditure less ROS and payroll tax	\$m	151.4	160.9	175.7	204.9	214.6	226.0
Capital expenditure							
User cost of capital (e)	\$m	8.3	8.6	9.1	9.3	12.4	18.8
Capital expenditure (f)	\$m	9.9	12.7	18.9	14.0	121.9	277.1
Expenditure aggregates							
Total cash expenditure (g)	\$m	178.6	193.6	222.9	246.5	372.6	542.6
Total accrual costs (h)	\$m	182.9	195.8	220.2	249.9	272.2	296.6
Staffing costs							
Average police staff costs	\$	134 095	141 242	146 943	152 367	162 904	167 189
Average non-police staff costs	\$	32 356	34 584	38 674	37 284	37 330	40 762
Staff by Indigenous and operational status (i)							
Operational FTE staff							
Sworn	FTE	833	856	904	995	1 045	1 107
Civilian	FTE	144	161	209	254	248	284
							POLICE SERVICES

Table 6A.8

Table 6A.8 Police service expenditure, staff and asset descriptors, NT (a)

	Unit	2005-06	2006-07	2007-08	2008-09	2009-10	2010-11
Other (j)	FTE	194	203	216	223	235	223
Operational FTE staff	FTE	1 171	1 220	1 329	1 472	1 528	1 614
Non-operational FTE staff	FTE	44	38	27	29	23	7
Sworn	FTE	91	77	50	38	55	48
Civilian	FTE	80	56	58	48	31	24
Other (j)	FTE	215	171	135	115	109	79
Non-operational FTE staff	FTE	1 386	1 391	1 464	1 587	1 637	1 693
Total staff	FTE						
Indigenous FTE staff	FTE	71	84	115	120	132	129
Operational	FTE	10	12	2	11	5	-
Non-operational	FTE	81	96	117	131	137	129
Indigenous FTE staff	FTE						
Assets by value (f)							
Land	\$'000	6 192	6 202	6 202	6 202	9 253	10 118
Buildings and fittings	\$'000	79 968	79 605	83 075	85 965	121 295	192 152
Other	\$'000	24 377	28 043	30 947	30 338	33 191	42 832
Total value of assets	\$'000	110 537	113 850	120 224	122 505	163 739	245 102

(a) The NT Police are part of a tri-service agency incorporating the NT Fire and Rescue Service and the NT Emergency Service. Where possible, all expenditure directly relating to the non-police arms of the department has been excluded.

(b) Based on actuarial advice on the cost of the schemes, not actuals.

(c) Depreciation is calculated using a straight-line method.

(d) Data for 2004-05 and 2005-06 have been revised since the 2007 Report to exclude non capitalised repairs and maintenance expenditure, which is captured in recurrent expenditure.

(e) User cost of capital is calculated at an opportunity cost of 8 per cent per annum on total value of assets (excluding land).

(f) Capital expenditure and assets data for 2009-10 include a total of \$102 million in asset revaluations across the land, and buildings and fittings, categories. In 2010-11, land and buildings were revalued.

(g) Comprises salaries and payments in the nature of salary, other recurrent expenditure, and capital expenditure.

Table 6A.8

Table 6A.8 Police service expenditure, staff and asset descriptors, NT (a)

<i>Unit</i>	2005-06	2006-07	2007-08	2008-09	2009-10	2010-11
-------------	---------	---------	---------	---------	---------	---------

(h) Comprises salaries and payments in the nature of salary, other recurrent expenditure, depreciation, and the user cost of capital.

(i) Structure changes have impacted this data. Some non operational units have been moved to operational units.

(j) Includes police auxiliaries and Aboriginal community police officers.

– Nil or rounded to zero. **na** Not available.

Source: NT Government (unpublished).

Table 6A.17

Table 6A.17 **Indigenous, sworn and unsworn police staff (a), (b)**

	<i>Unit</i>	<i>NSW</i>	<i>Vic (c)</i>	<i>Qld</i>	<i>WA</i>	<i>SA</i>	<i>Tas</i>	<i>ACT</i>	<i>NT</i>
Indigenous staff as proportion of total staff (d)									
2005-06	%	1.3	na	na	2.8	1.2	1.7	1.3	5.7
2006-07	%	1.4	na	2.4	2.5	1.2	1.8	0.7	6.9
2007-08	%	1.5	na	2.4	2.1	1.2	1.8	0.2	8.0
2008-09	%	1.6	na	2.3	1.8	1.1	1.8	0.1	8.3
2009-10	%	1.7	0.2	2.3	2.0	1.0	1.8	1.1	8.4
2010-11	%	2.4	0.3	2.3	1.7	1.0	1.6	1.0	7.6
Representation of Indigenous people among all people aged 20–64 years (31 Dec 2010)									
Indigenous people (e)	no.	96 082	21 955	96 011	45 855	18 074	12 022	2 831	41 880
All people	000	5 633.1	4 349.3	3 518.2	1 775.0	1 293.7	390.7	281.7	167.3
Indigenous % of all	%	1.7	0.5	2.7	2.6	1.4	3.1	1.0	25.0

- (a) Indigenous staff numbers relate to those staff who self-identify as being of Aboriginal and/or Torres Strait Islander descent. Information on Indigenous status is collected only at the time of recruitment.
- (b) Data comprise all FTE staff except in NSW prior to 2007-08, and the NT from 2007-08, where data are based on a headcount at 30 June.
- (c) Data should be regarded as indicative only. Indigenous staff unable to be separated prior to 2009-10.
- (d) Data should be regarded as indicative only. Indigenous staff unable to be separated prior to 2009-10.
- (e) Indigenous population estimate at 31 Dec 2010 derived as the average of the 30 June 2010 and 30 June 2011 estimates.

na Not available.

Source: State and Territory governments (unpublished); ABS *Experimental Estimates and Projections, Indigenous Australians* (Series B), Cat. no. 3238.0; ABS *Australian Demographic Statistics*, Cat. no. 3101.0 (unpublished).

Table 6A.38

Table 6A.38 **Number of deaths in police custody and custody-related operations, 2005-06 to 2010-11 (a), (b)**

Year	NSW	Vic (c)	Qld	WA	SA	Tas	ACT	NT	Aust
Non-Indigenous deaths in police custody and custody-related operations									
2005-06	7	1	3	2	3	–	1	–	17
2006-07	12	6	3	4	4	–	1	–	30
2007-08	8	8	4	4	2	–	–	3	30
2008-09	8	3	3	7	4	–	–	1	26
2009-10	5	3	2	2	1	–	1	1	15
2010-11	6	–	–	1	2	1	–	–	10
Indigenous deaths in police custody and custody-related operations									
2005-06	–	1	2	3	1	–	–	1	8
2006-07	–	1	1	–	–	–	–	1	3
2007-08	–	–	1	–	2	–	–	2	5
2008-09	–	–	1	1	2	–	–	4	8
2009-10	–	–	–	2	–	–	–	1	3
2010-11	1	–	1	4	–	–	–	1	7
Total deaths in police custody and custody-related operations									
2005-06	7	2	5	5	4	–	1	1	25
2006-07	12	7	4	4	4	–	1	1	33
2007-08	8	8	5	4	4	–	–	5	35
2008-09	8	3	4	8	6	–	–	5	34
2009-10	5	3	2	4	1	–	1	2	18
2010-11	7	–	1	5	2	1	–	1	17
Total number of deaths 2005-06 to 2010-11									
Non-Indigenous	46	21	15	20	16	1	3	5	128
Indigenous	1	2	6	10	5	–	–	10	34
All people	47	23	21	30	21	1	3	15	162

(a) Deaths in police custody include deaths in institutional settings (for example, police stations/lockups and police vehicles) or during transfer to or from such an institution; or deaths in hospitals following transfer from an institution; and other deaths in police operations where officers are in close contact with the deceased (for example, most raids and shootings by police). Deaths in custody-related operations include situations where officers did not have such close contact with the person as to be able to significantly influence or control the person's behaviour (for example, most sieges and most cases where officers were attempting to detain a person, such as pursuits).

(b) The AIC deaths in police custody and custody-related operations data for 2009 are preliminary (unpublished) and final data in other publications might differ. Data for historic years were revised during 2010 by the AIC and might differ from those in earlier reports.

(c) Data for Victoria Police is provisional and unconfirmed.

– Nil or rounded to zero.

na In this context, 'na' means no cases have been reported to the NDICP.

Source: Australian Institute of Criminology (various years), *Australian Deaths in Custody and Custody-related Police Operations*, AIC, Canberra; Australian Institute of Criminology (unpublished).