

---

# 14 Services for people with disability

## CONTENTS

|   |            |
|---|------------|
| <b>Indigenous data in the Services for people with disability chapter</b> | <b>308</b> |
| <b>Framework of performance indicators</b>                                | <b>309</b> |
| <b>Service use by special needs groups — Indigenous people</b>            | <b>312</b> |
| <b>Service user data quality and other issues</b>                         | <b>318</b> |
| <b>Data quality</b>   | <b>318</b> |
| <b>Other issues</b>   | <b>318</b> |
| <b>Deriving potential populations for Indigenous people</b>               | <b>318</b> |
| <b>Definitions of key terms and indicators</b>                            | <b>321</b> |
| <b>List of attachment tables</b>  | <b>325</b> |
| <b>References</b>   | <b>325</b> |

### **Attachment tables**

Attachment tables are identified in references throughout this Indigenous Compendium by an 'A' prefix (for example, in this chapter, table 14A.1). As the data are directly sourced from the 2012 Report, the Compendium also notes where the original table, figure or text in the 2012 Report can be found. For example, where the Compendium refers to '2012 Report, p. 14.1' this is page 1 of chapter 14 of the 2012 Report, and '2012 Report, table 14A.1' is attachment table 1 of attachment 14A of the 2012 Report. A full list of attachment tables is provided at the end of this chapter, and the attachment tables are available from the Review website at [www.pc.gov.au/gsp](http://www.pc.gov.au/gsp).

The Services for people with disability chapter (chapter 14) in the *Report on Government Services 2012* (2012 Report) reports on the performance of Disability services in each Australian State and Territory. Data are reported for Indigenous people for a subset of the performance indicators reported in that chapter — those data are compiled and presented here.

The NDA defines the roles and responsibilities of the Australian, State and Territory governments in the provision of services and supports to people with disability and their carers.

---

Australian, State and Territory governments are jointly responsible for developing and implementing reforms to improve outcomes for Indigenous people with disability.

### **Indigenous data in the Services for people with disability chapter**

The Services for people with disability chapter in the 2012 Report contains the following data items on Indigenous people:

- users per 1000 people/potential population in 2009-10 of the following services:
  - accommodation support services
  - community support services
  - community access services
  - respite services
  - employment services
- labour force participation and employment of people with a profound or severe core activity limitation, 2009.

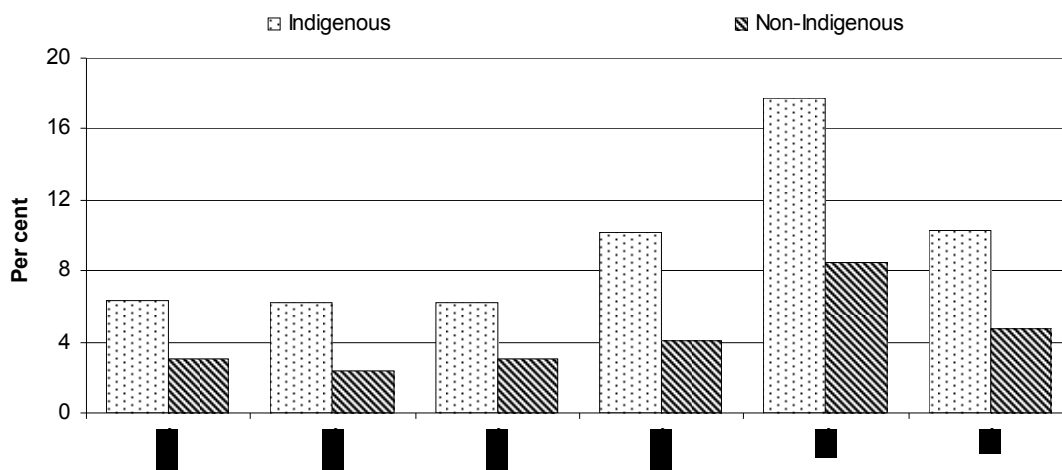
Indigenous people have significantly higher rates of profound or severe core activity limitation than non-Indigenous people. Disability data on ‘core activity need for assistance’ are available from the ABS 2008 National Aboriginal and Torres Strait Islander Social Survey (NATSISS). The concept of ‘core activity need for assistance’ (ASSNP<sup>1</sup>) is similar to the concept of profound or severe core activity limitations, but the relevant data are not suitable for direct comparison due to differences in the questions asked and the methods of data collection.

Nationally, 10.3 per cent of Indigenous people aged 18 years and over reported a profound or severe core activity restriction in 2008, around twice the rate for non-Indigenous people (4.7 per cent) (ABS 2009). The disparity between Indigenous and non-Indigenous people is consistent across ages or age groups (as applicable) (figure 14.1).

---

<sup>1</sup> The acronym ASSNP is the variable name used by the ABS to define ‘core activity need for assistance’. It appears to incorporate a shortened version of ‘assistance need’ and the letter ‘P’ indicates that the classification describes a characteristic of a person. This acronym is used throughout the chapter to denote ‘core activity need for assistance’.

**Figure 14.1 People with profound or severe core activity restrictions by age group and Indigenous status, non-remote areas of Australia, 2008**



Source: SCRGSP (2011) *Overcoming Indigenous Disadvantage: Key Indicators 2011*, Productivity Commission; 2012 Report, figure 14.2, p. 14.12.

## Framework of performance indicators

The Services for people with disability performance indicator framework outlined in figure 14.2 identifies the principal disability services activity areas considered in the 2012 Report. Data for Indigenous people are reported for a subset of the performance indicators and are presented here. It is important to interpret these data in the context of the broader performance indicator framework. The framework shows which data are comparable. For data that are not considered directly comparable, the text includes relevant caveats and supporting commentary.

Indicator boxes presented throughout the chapter provide information about the reported indicators. As these are sourced directly from the 2012 Report, they may include references to data not reported for Indigenous people and therefore not included in this Compendium.

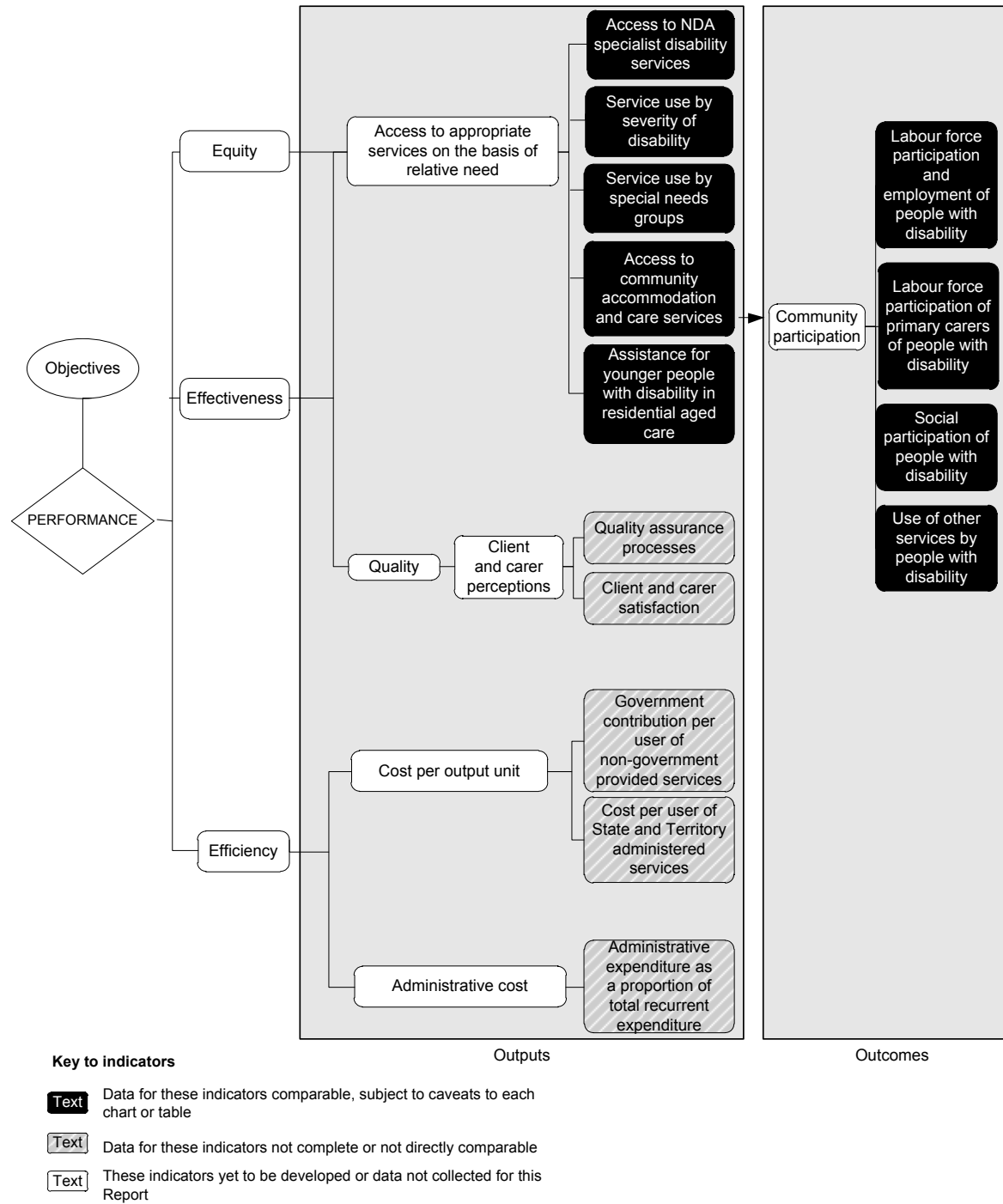
The Report's statistical appendix contains data that may assist in interpreting the performance indicators presented in this chapter. These data cover a range of demographic and geographic characteristics, including age profile, geographic distribution of the population, income levels, education levels, tenure of dwellings and cultural heritage (including Indigenous and ethnic status) (appendix A).

COAG has agreed six National Agreements to enhance accountability to the public for the outcomes achieved or outputs delivered by a range of government services

---

(see 2012 Report, chapter 1 for more detail on reforms to federal financial relations). The NDA covers the area of disability services. The agreement includes sets of performance indicators, for which the Steering Committee collates performance information for analysis by the COAG Reform Council (CRC). Performance indicators reported in this chapter are aligned with performance indicators in the NDA.

Figure 14.2 Services for people with disability performance indicator framework



Source: 2012 Report, figure 14.8, p. 14.19.

---

## Service use by special needs groups — Indigenous people

‘Service use by special needs groups’ is an indicator of governments’ objective that access to services should be equitable for all members of the community and provided on the basis of relative need (box 14.1). The Report compares access for people from special needs groups with access for people from outside the special needs group of the total population and the potential population. The potential population is an estimate, derived using a range of data sources, of the number of people with the potential to require disability support services, including individuals who meet the service eligibility criteria but who do not demand the services. Results are reported on the basis of the potential population to account for differences in the prevalence of disability between people in the special needs group and people outside the special needs group. For information on how the potential populations for the special needs groups were derived see 2012 Report, section 14.6.

### Box 14.1 Service use by special needs groups

‘Service use by special needs groups’ is defined by two measures:

- the proportion of service users per 1000 total population in a particular special needs group, compared to the proportion of service users per 1000 total population outside the special needs group
- the proportion of service users per 1000 potential population in a particular special needs group, compared to the proportion of service users per 1000 potential population outside the special needs group.

Both measures are reported for accommodation support, community support, community access and employment services. For respite services, data are reported per 1000 total population only due to data limitations.

Data are reported for three special needs groups:

- people from outer regional and remote/very remote locations
- people identified as Indigenous Australians
- people who were born in a non-English speaking country (that is, not born in Australia, New Zealand, Canada, the United Kingdom, South Africa, Ireland, the United States or Zimbabwe).

Holding other factors constant, the proportion of service users per 1000 people (or per 1000 potential population in a special needs group) should not differ significantly from the proportion of service users per 1000 people (or per 1000 potential population outside the special needs group).

(Continued on next page)

---

**Box 14.1 (Continued)**

For both measures, while a lower proportion can indicate reduced access for a special needs group, it can also represent strong alternative informal support networks (and a consequent lower level of otherwise unmet need), or a lower tendency of people with disability in a special needs group to choose to access NDA specialist disability services. Similarly, a higher proportion can suggest poor service targeting, the lack of alternative informal support networks or a greater tendency of people with disability in a special needs group to choose to access NDA specialist disability services. For the measure that compares access per 1000 population, significant differences in access can also reflect the special needs group having a higher/lower prevalence of disability.

This indicator does not provide information on whether the services are appropriate for the needs of the people receiving them, or correctly targeted on the basis of relative need. The indicator does not take into account differences in the level of informal assistance that is available for people in special needs groups and outside the special needs groups. Results for outer regional and remote/very remote users of accommodation support services, for example, need to be considered with care because alternatives to government funded accommodation support services are likely to be more readily available in these areas. Specifically, accommodation support services in outer regional and remote/very remote areas are largely provided informally, making use of local area coordinators and local community resources.

Data reported for this indicator are comparable.

Data quality information for this indicator is at [www.pc.gov.au/gsp/reports/rogs/2012](http://www.pc.gov.au/gsp/reports/rogs/2012).

Data for access per 1000 potential population need to be interpreted with care due to a number of factors affecting data quality. Potential sources of error include:

- that there are service users for whom ‘special needs group’ status (for example, Indigenous status) is not stated or not collected — poor and/or inconsistent levels of Indigenous identification between states and territories would affect comparisons
- the assumptions underlying the method used to derive the potential populations
- for the Indigenous estimates, differential Census undercount between states and territories might also introduce bias in the results that could affect the comparability of estimates across jurisdictions.

Section 14.6 contains more detailed information on these quality issues.

Nationally, in 2009-10, the proportion of the Indigenous population who used NDA accommodation support services was 2.8 service users per 1000 population, higher than the proportion of the non-Indigenous population who used these services (1.6 service users per 1000 population) (figure 14.3a). The proportion of the

---

Indigenous potential population who used NDA accommodation support services (45.1 service users per 1000 potential population) was lower than the non-Indigenous potential population who used these services (46.3 service users per 1000 potential population) (figure 14.3a).

Nationally, in 2009-10, the proportion of the Indigenous population who used NDA community support services was 14.4 service users per 1000 population, higher than the proportion of the non-Indigenous population who used these services (6.1 service users per 1000 population) (figure 14.3b). The proportion of the Indigenous potential population who used NDA community support services (228.9 service users per 1000 potential population) was higher than the proportion of the non-indigenous potential population who used these services (171.6 service users per 1000 potential population) (figure 14.3b).

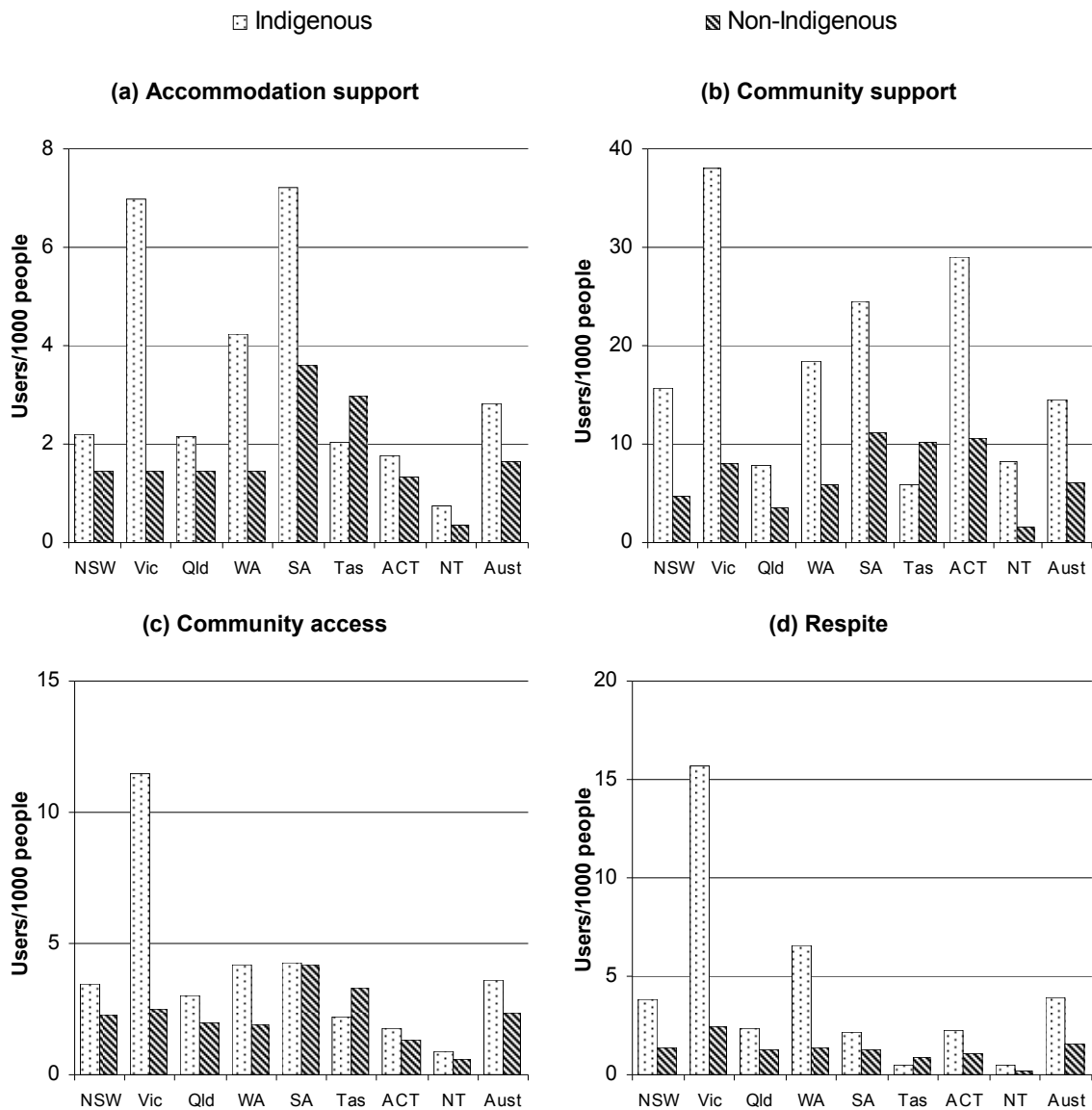
Nationally, in 2009-10, the proportion of the Indigenous population who used NDA community access services was 3.6 service users per 1000 population, higher than the proportion of the non-Indigenous population who used these services (2.4 service users per 1000 population) (figure 14.3c). The proportion of the Indigenous potential population who used NDA community access services (57.4 service users per 1000 potential population) was lower than the proportion of the non-Indigenous potential population who used these services (66.6 service users per 1000 potential population) (figure 14.5c).

Nationally, in 2009-10, the proportion of the Indigenous population who used NDA respite service was 3.9 users per 1000 population, higher than the proportion of the non-Indigenous population who used these services (1.6 service users per 1000 population) (figure 14.3d). Access to respite as a proportion of the potential population is not reported. To derive an estimate of the respite potential populations across the relevant groups, data on people with a ASSNP who had a primary carer are needed. Potential population data for respite services is not calculated at these levels because of conceptual, definitional and quality issues with carer data from the 2006 Census for the special needs groups.

Data on users of NDA disability support services as a proportion of the Indigenous estimated potential population (revised method) are also available disaggregated by age (table 14A.45).



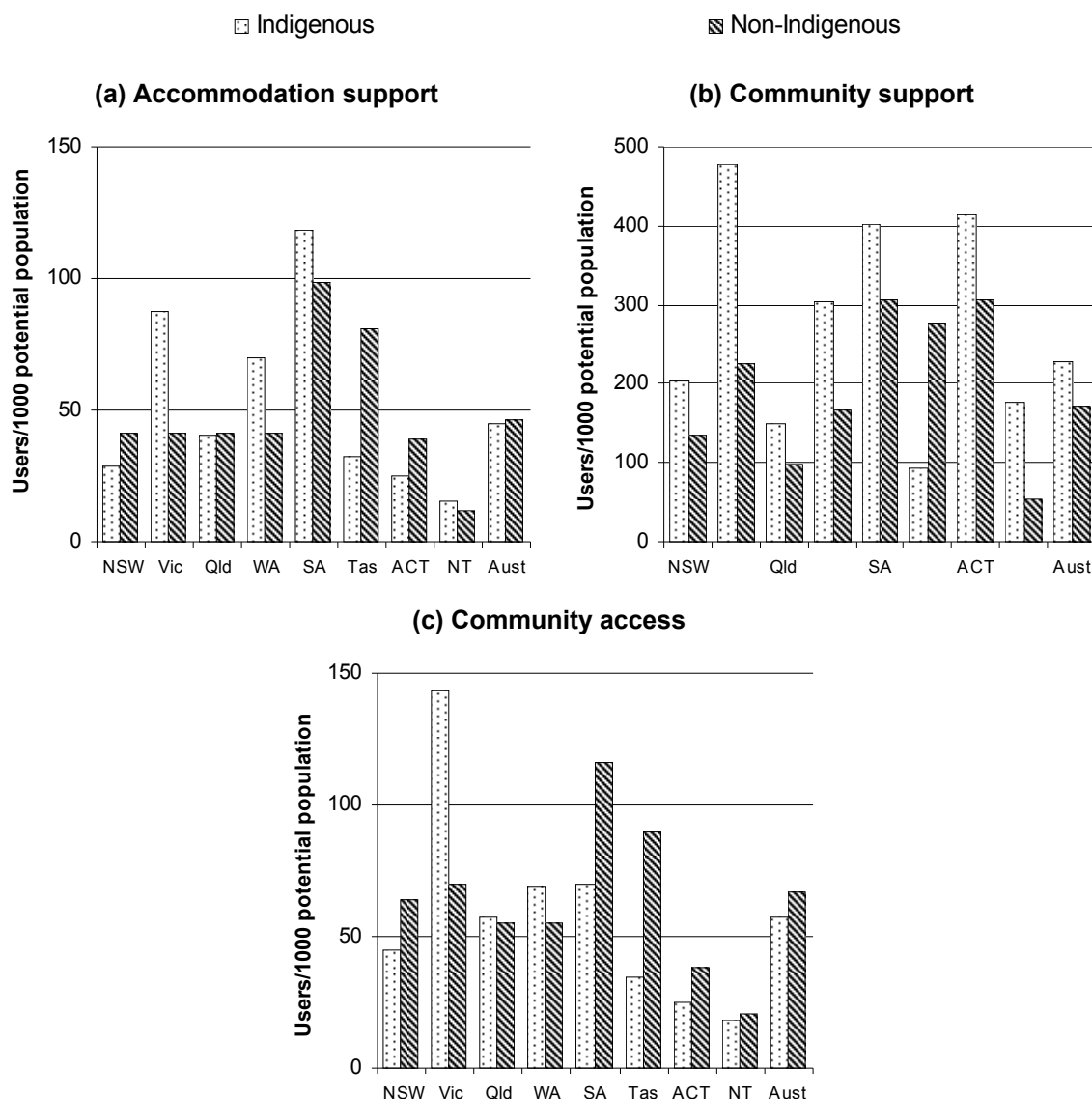
**Figure 14.3 Users of State and Territory administered NDA specialist disability services per 1000 people, by Indigenous status, 2009-10<sup>a, b</sup>**



<sup>a</sup> See tables 14A.46, 14A.47, 14A.48 and 14A.49 for detailed notes relating to these data. <sup>b</sup> Data need to be interpreted with care due to a number of factors affecting data quality. Section 14.6 (2012 Report) contains further information on these quality issues.

Source: AIHW (unpublished) *DS NMDS*; AIHW (2011) *Disability Support Services 2009-10: Report on services provided under the National Disability Agreement. Disability series*. Cat. no. DIS 59. Canberra; AIHW; AIHW (unpublished), derived from ABS 2011, 2009 Survey of Disability, Ageing and Carers, Cat. no. 4430.0; tables 14A.46, 14A.47, 14A.48 and 14A.49; 2012 Report, figure 14.18, p. 14.38.

**Figure 14.4 Users of State and Territory administered NDA specialist disability services per 1000 potential population, by Indigenous status, 2009-10<sup>a, b, c, d</sup>**



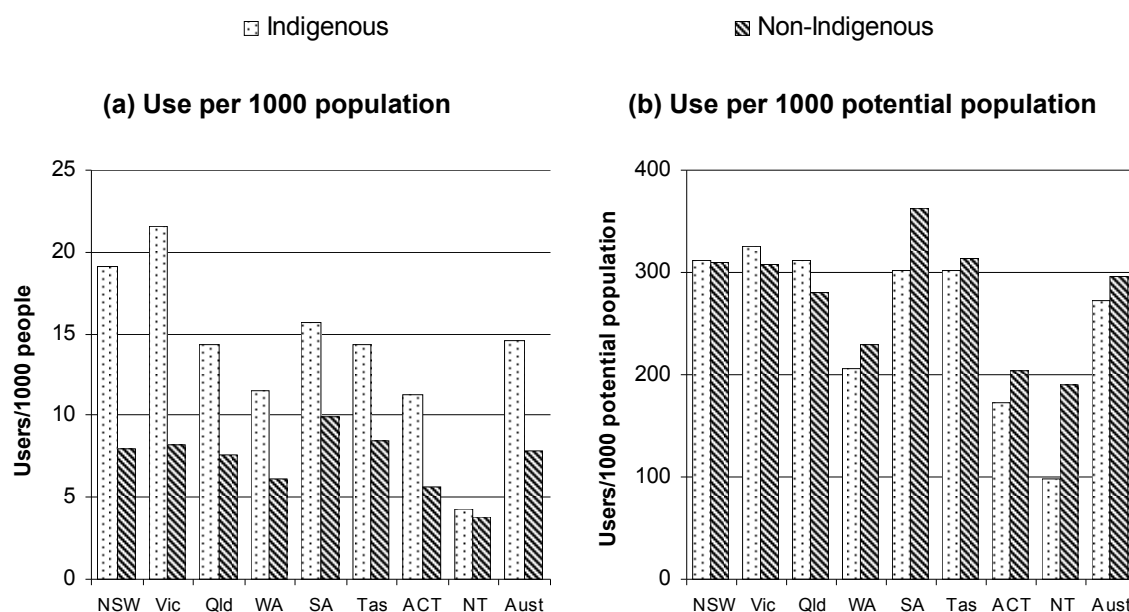
<sup>a</sup> See tables 14A.46, 14A.47 and 14A.48 for detailed notes relating to these data. <sup>b</sup> Potential population is calculated using the unrevised method. See 2012 Report, section 14.7 for information on how the potential population is defined. <sup>c</sup> Data need to be interpreted with care due to a number of factors affecting data quality. Section 14.6 (2012 Report) contains further information on these quality issues. <sup>d</sup> ACT data for service users per 1000 Indigenous potential population are not published for accommodation support and community access as they are based on a small number of service users.

Source: AIHW (unpublished) *DS NMDS*; AIHW (2011) *Disability Support Services 2009-10: Report on services provided under the National Disability Agreement. Disability series*. Cat. no. DIS 59. Canberra; AIHW; AIHW (unpublished), derived from ABS 2011, 2009 Survey of Disability, Ageing and Carers, Cat. no. 4430.0; tables 14A.46, 14A.47, 14A.48; 2012 Report, figure 14.19, p. 14.39.

Nationally, in 2009-10, the proportion of the Indigenous population who used NDA employment services (14.5 service users per 1000 population) was higher than that of the non-Indigenous population (7.8 service users per 1000 population) (figure 14.5a). The proportion of the Indigenous potential population who used NDA employment services (272.1 service users per 1000 potential population) was lower than that of the non-Indigenous potential population (295.7 service users per 1000 potential population) (figure 14.5b).

Data on users of NDA open employment services as a proportion of the Indigenous estimated potential population (revised method) are also available disaggregated by age (table 14A.51). Data on users of NDA supported employment services as a proportion of the Indigenous estimated potential population (revised method) are also available disaggregated by age (table 14A.52).

**Figure 14.20 Users of NDA employment services, by Indigenous status, 2009-10<sup>a, b, c</sup>**



<sup>a</sup> See table 14A.50 for detailed notes relating to these data. <sup>b</sup> Potential population is calculated using the unrevised method. See 2012 Report, section 14.7 for information on how the potential population is defined. <sup>c</sup> Data need to be interpreted with care due to a number of factors affecting data quality. Section 14.6 (2012 Report) contains further information on these quality issues.

Source: AIHW (unpublished) *DS NMDS*; AIHW (2011) *Disability Support Services 2009-10: Report on services provided under the National Disability Agreement. Disability series*. Cat. no. DIS 59. Canberra; AIHW (unpublished) derived from ABS (2011) *2009 SDAC*, Cat. no. 4430.0, ABS *2006 Census of Population and Housing (CDATA Online)*, ABS (2007) *Labour Force Australia, Detailed Electronic Delivery, June 2008*, Cat. no. 6291.0.55.001, ABS (2009) *Experimental Estimates and Projections, Aboriginal and Torres Strait Islander Australians, 1991 to 2021*, Cat. no. 3238.0, *Australian Demographic Statistics, 2008*, Cat. no. 3101.0 and ABS (2007) *Population by Age and Sex, Australian States and Territories, Jun 2007*, Cat. no. 3201.0; table 14A.50; 2012 Report, figure 14.20, p. 14.40.

---

## Service user data quality and other issues

### *Data quality*

Data quality considerations should be taken into account when interpreting the DS NMDS service user data used in this chapter. In particular, data quality should be considered when making comparisons across jurisdictions and across years.

There are three aspects of quality that affect the accuracy and reliability of the data reported in this chapter:

- service type outlet response rates
- service user response rates
- ‘not stated’ rates for individual data items.

The first two of these affect the service user counts — nationally, by jurisdiction and service type — and all three affect the accuracy of analyses of individual data items (AIHW 2011).

‘Not stated’ rates for individual data items vary between jurisdictions (AIHW 2011). One reason for the higher level of ‘not stated’ responses to some data items may be the increased efforts to improve the coverage and completeness of the DS NMDS collection overall. For example, therapy services (a community support service) in the ACT participated for the first time in the 2004-05 collection. In an effort to include all users of these services, provisional data collection processes were used that meant minimal data were provided for each user (AIHW 2011).

### **Other issues**

#### *Deriving potential populations for Indigenous people*

Potential populations have been estimated for each of the special needs groups (outer regional and remote/very remote areas, Indigenous and people born in a non-English speaking country) and for those outside of the special needs groups (major cities and inner regional areas, non-Indigenous and people born in an English speaking country). These potential populations are estimates of the number of people with the potential to require disability support services in the relevant group, including individuals who meet the service eligibility criteria but who do not demand the services.

---

The approach used to derive the potential populations by Indigenous status involved the following steps:

- Deriving current State/Territory based 10-year age and sex specific rate ratios of people with ASSNP by Indigenous status using the 2006 Census
- Multiplying the current State/Territory Indigenous and non-Indigenous 10-year age and sex population estimates by national 10-year age and sex specific rates of severe/profound core activity limitation from the 2009 SDAC. Then multiplying the Indigenous and non-Indigenous counts for each 10-year age and sex group by the 10-year age and sex specific rate ratios of people with ASSNP to obtain an Indigenous/non-Indigenous potential population within each age and sex group
- Summing the 10-year age and sex group counts to derive a total Indigenous and non-Indigenous potential population for each State/Territory
- For employment, repeating the above steps, but restricting the calculations to those people aged 15–64 years, then multiplying each State/Territory total by State/Territory specific labour force participation rates for people aged 15–64 years.

### *Data quality issues*

Data measuring the potential populations of the special needs groups are not explicitly available for the required time periods and have been estimated using several different data sources (as noted above), under several key assumptions. Some issues with this approach are outlined below:

- The method used to estimate the potential populations assumes:
  - that disability rates vary only by age and sex, and there is no effect of remoteness, disadvantage, or any other variable — this is likely to affect the reliability of comparisons across states and territories, however, it is currently not possible to detect the size or direction of any potential bias
  - that age- and sex- specific disability rates do not change significantly over time.
- The rate ratio/proportion adjustments (that is, multiplication) assumes consistency between the rate ratio/proportion as calculated from the 2006 Census and the corresponding information if it were collected from the 2009 SDAC. Two particular points to note with this assumption are that:
  - information about people with ASSNP is based on the self-enumeration (interview in Indigenous communities) of four questions under the 2006 Census, whereas in SDAC 2009 people are defined as having a

---

severe/profound core activity limitation on the basis of a comprehensive interviewer administered module of questions — the two populations are different, but are conceptually related

- the special needs groups identification may not be the same between the 2006 Census and the 2009 SDAC (ABS research indicates, for example, that the Indigenous identification rate differs across the Census and interviewer administered surveys)
- It is not known if the data collection instruments are culturally appropriate for all special needs groups; nor is it known how this, combined with different data collection methods, impacts on the accuracy of the estimated potential population
- There are a number of potential sources of error related to the Census that stem from failure to return a Census form or failure to answer every applicable question. Information calculated from 2006 Census data exclude people for whom data item information is not available. As with any collection, should the characteristics of interest (for example, ASSNP and/or special needs group status) of the people excluded differ from those people included, a potential for bias is introduced. In particular, for Indigenous estimates, differential undercount of Indigenous Australians across states and territories may introduce bias into the results that would affect the comparability of estimates across jurisdictions, if those missed by the Census had a different rate of disability status to those included.

---

## Definitions of key terms and indicators

### Disability

The United Nation's *Convention on the Rights of Persons with Disabilities*, ratified by Australia on 17 July 2008, defines 'persons with disabilities' as those who have long-term physical, mental, intellectual or sensory impairments which in interaction with various barriers may hinder their full and effective participation in society on an equal basis with others.

The WHO defines 'disabilities' as impairments, activity limitations, and participation restrictions: an impairment is a problem in body function or structure; an activity limitation is a difficulty encountered by an individual in executing a task or action; and a participation restriction is a problem experienced by an individual in involvement in life situations. Disability is a complex phenomenon, reflecting an interaction between features of a person's body and features of the society in which he or she lives (WHO 2009).

The ABS SDAC 2009 defined 'disability' as the presence of at least one of 17 limitations, restrictions or impairments, which have lasted or are likely to last for a period of 6 months or more: loss of sight (not corrected by glasses or contact lenses); loss of hearing where communication is restricted; or an aid to assist with, or substitute for, hearing is used; speech difficulties; shortness of breath or breathing difficulties causing restriction; chronic or recurrent pain or discomfort causing restriction; blackouts, fits or loss of consciousness; difficulty learning or understanding; incomplete use of arms or fingers; difficulty gripping or holding things; incomplete use of feet or legs; nervous or emotional condition causing restriction; restriction in physical activities or in doing physical work; disfigurement or deformity; mental illness or condition requiring help or supervision; long-term effects of head injury; stroke or other brain damage causing restriction; receiving treatment or medication for any other long-term conditions or ailments and still restricted; any other long-term conditions resulting in a restriction.

The third CSTDA (2003, p. 9) defined 'people with disabilities' as those whose disability manifests itself before the age of 65 years and for which they require significant ongoing and/or long-term episodic support. For these people, the disability will be attributable to an intellectual, psychiatric, sensory, physical or neurological impairment or acquired brain injury (or some combination of these) which is likely to be permanent and results in substantially reduced capacity in at least one of the following: self care/management, mobility and communication.

---

**Potential population (unrevised method)**

Potential population estimates are used as the denominators for the performance measures reported under the indicator 'access to NDA specialist disability services'.

The 'potential population' is the number of people with the potential to require disability support services, including individuals who meet the service eligibility criteria but who do not demand the services. In practice, the number of people with profound or severe core activity limitation is used as the basis to measure the potential population (see definition of core activities above).

The potential population for NDA accommodation support, community access and community support services is measured by the number of people aged under 65 years who have a profound or severe core activity limitation, adjusted for the Indigenous factor. The potential population for NDA employment services is measured by the number of people aged 15–64 years with a profound or severe core activity limitation, adjusted for the Indigenous factor and the labour force participation rate.

The ABS concept of a 'profound or severe' core activity limitation that relates to the need for assistance with everyday activities of self care, mobility and communication currently underpins the measurement of the population in need of specialist disability services. The relatively high standard errors in the prevalence rates for smaller jurisdictions, as well as the need to adjust for the Indigenous population necessitated the preparation of special estimates of the 'potential population' for specialist disability services.

Briefly, the potential population was estimated by applying the 2009 national age- and sex- specific rates of profound or severe core activity limitation to the age and sex structure of each jurisdiction in the current year, to give an 'expected current estimate' of people with a profound or severe core activity limitation in that jurisdiction. These estimates were adjusted by the Indigenous factor to account for differences in the proportion of jurisdictions' populations who are Indigenous. Indigenous people have been given a weighting of 2.4 in these estimates, in recognition of their greater prevalence rates of disability and their relatively greater representation in NDA specialist disability services (AIHW 2006).

The potential populations for 2004-05 to 2008-09 were calculated using national age- and sex-specific rates of severe or profound core activity limitation from the ABS Survey of Disability, Ageing and Carers (SDAC) conducted in 2003. In 2011, the 2009 SDAC was released, resulting in a break in series between the 2003 and 2009 surveys. For comparison purposes, the potential population for 2008-09 has also been recalculated using 2009 SDAC.



---

**Potential Population  
(revised method)**

Potential population estimates are used as the denominators for the performance measures reported to COAG under the NDA.

The 'potential population' is the number of people aged under 65 with the potential to require disability support services, including individuals who meet the service eligibility criteria but who do not demand the services. In practice, the number of people with profound or severe core activity limitation is used as the basis to measure the potential population (see definition of core activities above).

The potential population for State/Territory delivered disability support services is measured by the number of people aged under 65 years who have a profound or severe core activity limitation. Briefly, the 2009 national age- and sex- specific rates of profound or severe core activity limitation are applied to the age and sex structure of each jurisdiction in the current year, to give an 'expected current estimate' of people with a profound or severe core activity limitation in that jurisdiction. No Indigenous weight or scaling factor is used. The potential population for NDA employment services is measured by the number of people aged 15-64 years with a profound or severe core activity limitation, and is calculated using the same method. No Indigenous weight or scaling factor is used. There is no adjustment for labour force participation.

The method used to calculate the Indigenous potential population is to apply adjusted national age- and sex- specific rates of profound or severe core activity limitation to the age and sex structure of the Indigenous population of each jurisdiction in the current year. The national age- and sex- specific rates of profound or severe core activity limitation are adjusted by the rate ratio of the Indigenous rate need for assistance to the all persons rate of need for assistance with core activities, as calculated from the Census. Estimates of potential population by country of birth and Remoteness Area are calculated by applying Census distributions of country of birth and Remoteness Area for people who need assistance with core activities to the age and sex structure of the jurisdictional potential population.

The potential populations for 2004-05 to 2008-09 were calculated using national age- and sex-specific rates of severe or profound core activity limitation from the ABS Survey of Disability, Ageing and Carers (SDAC) conducted in 2003. In 2011, the 2009 SDAC was released, resulting in a break in series between the 2003 and 2009 surveys. For comparison purposes, the potential population for 2008-09 has also been recalculated using 2009 SDAC.

**Primary carer**

*ABS SDAC primary carer:* A primary carer is a person who provides the most informal assistance, in terms of help or supervision, to a person with one or more disabilities. The assistance has to be ongoing, or likely to be ongoing, for at least 6 months and be provided for one or more of the core activities (communication, mobility and self care). In the SDAC, primary carers only include persons aged 15 years and over for whom a personal interview was conducted. Persons aged 15 to 17 years were only interviewed personally if parental permission was granted (ABS 2011).

*DS NMDS primary carer:* an informal carer who assists the person requiring support, in one or more of the following ADL: self care, mobility or communication.

See also informal carer.

---

|  |  |
|--|--|
| <b>Profound core activity limitation</b>           | Unable to, or always needing assistance to, perform a core activity task (as per the 2009 SDAC).   |
| <b>Service</b>                                     | A service is a support activity provided to a service user, in accord with the NDA. Services within the scope of the collection are those for which funding has been provided during the specified period by a government organisation operating under the NDA.  |
| <b>Service type</b>                                | The support activity that the service type outlet has been funded to provide under the NDA. The DS NMDS classifies services according to 'service type'. The service type classification groups services into seven categories: accommodation support; community support; community access; respite; employment; advocacy, information and print disability; and other support services. Each of these categories has subcategories.   |
| <b>Service type outlet</b>                         | A service type outlet is the unit of the funded agency that delivers a particular NDA service type at or from a discrete location. If a funded agency provides, for example, both accommodation support and respite services, it is counted as two service type outlets. Similarly, if an agency is funded to provide more than one accommodation support service type (for example, group homes and attendant care), then it is providing (and is usually separately funded for) two different service types — that is, there are two service type outlets for the funded agency. |
| <b>Service user</b>                                | A service user is a person with disability who receives a NDA specialist disability service. A service user may receive more than one service over a period of time or on a single day.  |
| <b>Severe core activity limitation</b>             | Sometimes needing assistance to perform a core activity task (as per the SDAC 2009).   |
| <b>Users of NDA accommodation support services</b> | People using one or more accommodation support services that correspond to the following DS NMDS service types: 1.01 large residential/institutions (more than 20 places); 1.02 small residential/institutions (7–20 places); 1.03 hostels; 1.04 group homes (less than seven places); 1.05 attendant care/personal care; 1.06 in-home accommodation support; 1.07 alternative family placement; and 1.08 other accommodation support.   |
| <b>Users of NDA community access services</b>      | People using one or more services that correspond to the following DS NMDS service types: 3.01 learning and life skills development; 3.02 recreation/holiday programs; and 3.03 other community access. See AIHW (2011) for more information on service types 3.01–3.03.   |
| <b>Users of NDA community support services</b>     | People using one or more services that correspond to the following DS NMDS service types: 2.01 therapy support for individuals; 2.02 early childhood intervention; 2.03 behaviour/specialist intervention; 2.04 counselling; 2.05 regional resource and support teams; 2.06 case management, local coordination and development; and 2.07 other community support. See AIHW (2011) for more information on service types 2.01–2.07.  |
| <b>Users of NDA employment services</b>            | People using one or more services that correspond to the following DS NMDS service types: 5.01 open employment and 5.02 supported employment. (For data prior to 2005-06, people using service type 5.03 [combined open and supported] are also included.)   |

---

**Users of NDA respite services**

People using one or more services that correspond to the following DS NMDS service types: 4.01 own home respite; 4.02 centre-based respite/respite homes; 4.03 host family respite/peer support respite; 4.04 flexible/combo respite; and 4.05 other respite. See AIHW (2011) for more information on service types 4.01–4.05.

**List of attachment tables**

Attachment tables for data within this chapter are contained in the attachment to the Compendium. These tables are identified in references throughout this chapter by a '14A' prefix (for example, table 14A.1 is table 1 in the Services for people with disability attachment). Attachment tables are on the Review website ([www.pc.gov.au/gsp](http://www.pc.gov.au/gsp)).

- Table 14A.45** Users of total NDA State/Territory delivered disability support services (aged 0-64 years) as a proportion of the indigenous estimated potential population, by age group
- Table 14A.46** Users of NDA accommodation support services, by Indigenous status
- Table 14A.47** Users of NDA community support services, by Indigenous status
- Table 14A.48** Users of NDA community access services, by Indigenous status
- Table 14A.49** Users of NDA respite services, by Indigenous status
- Table 14A.50** Users of NDA employment services (aged 15-64 years), by Indigenous status
- Table 14A.51** Users of NDA open employment services (aged 15-64 years), by Indigenous status
- Table 14A.52** Users of NDA supported employment services (aged 15-64 years), by Indigenous status
- Table 14A.94** Labour force participation and employment of all people with disability, by special needs groups, 2009 (per cent)
- Table 14A.95** Labour force participation and employment of people with a profound or severe core activity limitation, by special needs groups, 2009 (per cent)
- Table 14A.96** Labour force participation and employment of people with a profound or severe core activity limitation, by special needs groups, 2006 (per cent)

**References**

- ABS (Australian Bureau of Statistics) 2009, *National Aboriginal and Torres Strait Islander Social Survey 2008: Explanatory Notes*, Cat. No. 4714.0, Canberra.
- 2011, *Disability, Ageing and Carers Australia: Summary of Findings 2009*, Cat. no. 4430.0, Canberra.

---

AIHW (Australian Institute of Health and Welfare) 2006, *'Potential Population' — Updating the Indigenous Factor in Disability Services Performance Indicator Denominators*, Welfare Working Paper Series Number 50, Cat. no. DIS 45, Canberra.

— 2011, *Disability Support Services 2009-10: Report on services provided under the Commonwealth State/Territory Disability Agreement and the National Disability Agreement*. Disability series. Cat.no.DIS 59. Canberra.

CSTDA (Commonwealth State/Territory Disability Agreement) 2003, *Agreement between the Commonwealth of Australia and the States and Territories of Australia in Relation to Disability Services*, Australian Government Department of Family and Community Services, Canberra.

COAG (Council of Australian Governments) 2009, *National Disability Agreement*, Council of Australian Governments, [www.coag.gov.au/intergov\\_agreements/federal\\_financial\\_relations/index.cfm](http://www.coag.gov.au/intergov_agreements/federal_financial_relations/index.cfm) (accessed 14 October 2009).

WHO (World Health Organisation) 2009, *Disabilities*, Health topics, Geneva, [www.who.int/topics/disabilities/en/](http://www.who.int/topics/disabilities/en/) (accessed 13 October 2009).

# 14A Services for people with disability — attachment

Tables in this attachment are sourced from the Services for people with disability attachment of the 2012 Report. Table numbers refer to the 2012 Report, for example, a reference to ‘2012 Report, table 14A.15’ refers to attachment table 15 of attachment 14A of the 2012 Report.

Definitions for indicators and descriptors in this attachment are in the Services for people with disability chapter of the Compendium.

Data in this Compendium are examined by the Services for people with disability Working Group, but have not been formally audited by the Secretariat.

Data reported in the attachment tables are the most accurate available at the time of data collection. Historical data may have been updated since the last edition of RoGS.

## Attachment contents

---

|                     |   |
|---------------------|---|
| <b>Table 14A.45</b> | Users of total NDA State/Territory delivered disability support services (aged 0-64 years) as a proportion of the indigenous estimated potential population, by age group |
| <b>Table 14A.46</b> | Users of NDA accommodation support services, by Indigenous status   |
| <b>Table 14A.47</b> | Users of NDA community support services, by Indigenous status   |
| <b>Table 14A.48</b> | Users of NDA community access services, by Indigenous status  |
| <b>Table 14A.49</b> | Users of NDA respite services, by Indigenous status   |
| <b>Table 14A.50</b> | Users of NDA employment services (aged 15-64 years), by Indigenous status   |
| <b>Table 14A.51</b> | Users of NDA open employment services (aged 15-64 years), by Indigenous status  |
| <b>Table 14A.52</b> | Users of NDA supported employment services (aged 15-64 years), by Indigenous status   |
| <b>Table 14A.94</b> | Labour force participation and employment of all people with disability, by special needs groups, 2009 (per cent)   |
| <b>Table 14A.95</b> | Labour force participation and employment of people with a profound or severe core activity limitation, by special needs groups, 2009 (per cent)                          |
| <b>Table 14A.96</b> | Labour force participation and employment of people with a profound or severe core activity limitation, by special needs groups, 2006 (per cent)                          |

Table 14A.45

**Table 14A.45 Users of total NDA State/Territory delivered disability support services (aged 0-64 years) as a proportion of the indigenous estimated potential population, by age group (a), (b), (c), (d), (e)**

|   | <i>Unit</i> | <i>NSW</i>    | <i>Vic</i>   | <i>Qld</i>   | <i>WA</i>    | <i>SA</i>    | <i>Tas</i>   | <i>ACT</i>  | <i>NT</i>    | <i>Aust</i>   |
|---|-------------|---------------|--------------|--------------|--------------|--------------|--------------|-------------|--------------|---------------|
| 2007-08   |             |               |              |              |              |              |              |             |              |               |
| Number of Indigenous users of State/Territory delivered disability support services                               |             |               |              |              |              |              |              |             |              |               |
| 0-4 years   | no.         | np            | np           | np           | np           | np           | np           | np          | np           | 803           |
| 5-14 years  | no.         | np            | np           | np           | np           | np           | np           | np          | np           | 1 836         |
| 15-24 years   | no.         | np            | np           | np           | np           | np           | np           | np          | np           | 1 672         |
| 25-34 years   | no.         | np            | np           | np           | np           | np           | np           | np          | np           | 886           |
| 35-44 years   | no.         | np            | np           | np           | np           | np           | np           | np          | np           | 962           |
| 45-54 years   | no.         | np            | np           | np           | np           | np           | np           | np          | np           | 686           |
| 55-64 years   | no.         | np            | np           | np           | np           | np           | np           | np          | np           | 380           |
| 0-49 years  | no.         | np            | np           | np           | np           | np           | np           | np          | np           | 6 553         |
| <b>Total (f)</b>  | <b>no.</b>  | <b>1 767</b>  | <b>1 418</b> | <b>1 289</b> | <b>1 230</b> | <b>802</b>   | <b>94</b>    | <b>61</b>   | <b>756</b>   | <b>7 243</b>  |
| Estimated Indigenous potential population State/Territory delivered disability support services (g)               |             |               |              |              |              |              |              |             |              |               |
| 0-4 years   | no.         | np            | np           | np           | np           | np           | np           | np          | np           | 2 525         |
| 5-14 years  | no.         | np            | np           | np           | np           | np           | np           | np          | np           | 8 635         |
| 15-24 years   | no.         | np            | np           | np           | np           | np           | np           | np          | np           | 3 849         |
| 25-34 years   | no.         | np            | np           | np           | np           | np           | np           | np          | np           | 3 396         |
| 35-44 years   | no.         | np            | np           | np           | np           | np           | np           | np          | np           | 5 474         |
| 45-54 years   | no.         | np            | np           | np           | np           | np           | np           | np          | np           | 6 286         |
| 55-64 years   | no.         | np            | np           | np           | np           | np           | np           | np          | np           | 5 607         |
| 0-49 years  | no.         | np            | np           | np           | np           | np           | np           | np          | np           | 26 977        |
| <b>Total</b>  | <b>no.</b>  | <b>12 912</b> | <b>2 953</b> | <b>8 434</b> | <b>4 703</b> | <b>1 860</b> | <b>1 293</b> | <b>340</b>  | <b>3 277</b> | <b>35 772</b> |
| Proportion of the Indigenous potential population accessing State/Territory delivered disability support services |             |               |              |              |              |              |              |             |              |               |
| 0-4 years   | %           | 41.7          | 75.8         | 13.1         | 14.2         | 61.4         | np           | 50.5        | 22.8         | 31.8          |
| 5-14 years  | %           | 17.0          | 41.2         | 13.2         | 38.9         | 36.4         | 5.8          | 40.1        | 27.6         | 21.3          |
| 15-24 years   | %           | 28.5          | 100.9        | 35.8         | 69.6         | 89.5         | 16.2         | 16.7        | 38.0         | 43.4          |
| 25-34 years   | %           | 12.1          | 56.5         | 20.4         | 43.2         | 70.1         | 11.5         | np          | 26.6         | 26.1          |
| 35-44 years   | %           | 7.2           | 42.0         | 18.3         | 19.3         | 42.3         | 10.3         | np          | 26.0         | 17.6          |
| 45-54 years   | %           | 3.3           | 32.6         | 9.9          | 11.4         | 27.8         | 4.6          | np          | 16.0         | 10.9          |
| 55-64 years   | %           | 2.2           | 22.0         | 4.8          | 6.7          | 17.3         | np           | np          | 14.5         | 6.8           |
| 0-49 years  | %           | 16.9          | 54.5         | 18.5         | 32.9         | 51.9         | 8.5          | 20.7        | 27.1         | 24.3          |
| <b>Total (f)</b>  | <b>%</b>    | <b>13.7</b>   | <b>48.0</b>  | <b>15.3</b>  | <b>26.2</b>  | <b>43.1</b>  | <b>7.3</b>   | <b>18.0</b> | <b>23.1</b>  | <b>20.2</b>   |
| 2008-09   |             |               |              |              |              |              |              |             |              |               |
| Number of Indigenous users of State/Territory delivered disability support services                               |             |               |              |              |              |              |              |             |              |               |
| 0-4 years   | no.         | np            | np           | np           | np           | np           | np           | np          | np           | 881           |
| 5-14 years  | no.         | np            | np           | np           | np           | np           | np           | np          | np           | 2 114         |
| 15-24 years   | no.         | np            | np           | np           | np           | np           | np           | np          | np           | 1 857         |
| 25-34 years   | no.         | np            | np           | np           | np           | np           | np           | np          | np           | 1 007         |
| 35-44 years   | no.         | np            | np           | np           | np           | np           | np           | np          | np           | 1 049         |

Table 14A.45

**Table 14A.45 Users of total NDA State/Territory delivered disability support services (aged 0-64 years) as a proportion of the indigenous estimated potential population, by age group (a), (b), (c), (d), (e)**

|   | <i>Unit</i> | <i>NSW</i>    | <i>Vic</i>   | <i>Qld</i>   | <i>WA</i>    | <i>SA</i>    | <i>Tas</i>   | <i>ACT</i>  | <i>NT</i>    | <i>Aust</i>   |
|---|-------------|---------------|--------------|--------------|--------------|--------------|--------------|-------------|--------------|---------------|
| 45-54 years   | no.         | np            | np           | np           | np           | np           | np           | np          | np           | 846           |
| 55-64 years   | no.         | np            | np           | np           | np           | np           | np           | np          | np           | 519           |
| 0-49 years  | no.         | np            | np           | np           | np           | np           | np           | np          | np           | 7 381         |
| <b>Total (f)</b>  | <b>no.</b>  | <b>2 238</b>  | <b>1 683</b> | <b>1 370</b> | <b>1 364</b> | <b>831</b>   | <b>96</b>    | <b>83</b>   | <b>718</b>   | <b>8 273</b>  |
| Estimated Indigenous potential population State/Territory delivered disability support services (c) (h)           |             |               |              |              |              |              |              |             |              |               |
| 0-4 years   | no.         | np            | np           | np           | np           | np           | np           | np          | np           | 1 946         |
| 5-14 years  | no.         | np            | np           | np           | np           | np           | np           | np          | np           | 8 399         |
| 15-24 years   | no.         | np            | np           | np           | np           | np           | np           | np          | np           | 3 350         |
| 25-34 years   | no.         | np            | np           | np           | np           | np           | np           | np          | np           | 2 962         |
| 35-44 years   | no.         | np            | np           | np           | np           | np           | np           | np          | np           | 4 694         |
| 45-54 years   | no.         | np            | np           | np           | np           | np           | np           | np          | np           | 5 666         |
| 55-64 years   | no.         | np            | np           | np           | np           | np           | np           | np          | np           | 5 739         |
| 0-49 years  | no.         | np            | np           | np           | np           | np           | np           | np          | np           | 24 292        |
| <b>Total</b>  | <b>no.</b>  | <b>11 818</b> | <b>2 692</b> | <b>7 760</b> | <b>4 290</b> | <b>1 710</b> | <b>1 192</b> | <b>308</b>  | <b>2 985</b> | <b>32 757</b> |
| Proportion of the Indigenous potential population accessing State/Territory delivered disability support services |             |               |              |              |              |              |              |             |              |               |
| 0-4 years   | %           | 62.2          | 105.4        | 12.9         | 22.8         | 109.0        | np           | 126.7       | 21.3         | 45.3          |
| 5-14 years  | %           | 23.7          | 46.8         | 13.9         | 42.8         | 37.5         | 5.2          | 56.8        | 22.3         | 25.2          |
| 15-24 years   | %           | 37.4          | 131.6        | 45.8         | 94.2         | 96.2         | 21.7         | 23.4        | 41.7         | 55.4          |
| 25-34 years   | %           | 18.2          | 78.1         | 29.1         | 50.1         | 76.8         | 11.8         | np          | 29.7         | 34.0          |
| 35-44 years   | %           | 10.3          | 60.4         | 21.6         | 23.6         | 51.7         | 10.7         | 13.4        | 27.6         | 22.3          |
| 45-54 years   | %           | 6.0           | 46.9         | 11.3         | 16.1         | 34.1         | 7.1          | np          | 19.4         | 14.9          |
| 55-64 years   | %           | 3.2           | 33.9         | 4.8          | 9.6          | 18.6         | np           | np          | 17.2         | 9.0           |
| 0-49 years  | %           | 23.4          | 69.7         | 21.9         | 40.6         | 59.4         | 9.5          | 32.8        | 27.3         | 30.4          |
| <b>Total (f)</b>  | <b>%</b>    | <b>18.9</b>   | <b>62.5</b>  | <b>17.7</b>  | <b>31.8</b>  | <b>48.6</b>  | <b>8.1</b>   | <b>26.9</b> | <b>24.1</b>  | <b>25.3</b>   |
| 2009-10   |             |               |              |              |              |              |              |             |              |               |
| Number of Indigenous users of State/Territory delivered disability support services                               |             |               |              |              |              |              |              |             |              |               |
| 0-4 years   | no.         | np            | np           | np           | np           | np           | np           | np          | np           | 1 064         |
| 5-14 years  | no.         | np            | np           | np           | np           | np           | np           | np          | np           | 2 468         |
| 15-24 years   | no.         | np            | np           | np           | np           | np           | np           | np          | np           | 2 177         |
| 25-34 years   | no.         | np            | np           | np           | np           | np           | np           | np          | np           | 1 049         |
| 35-44 years   | no.         | np            | np           | np           | np           | np           | np           | np          | np           | 1 083         |
| 45-54 years   | no.         | np            | np           | np           | np           | np           | np           | np          | np           | 864           |
| 55-64 years   | no.         | np            | np           | np           | np           | np           | np           | np          | np           | 543           |
| 0-49 years  | no.         | np            | np           | np           | np           | np           | np           | np          | np           | 8 313         |
| <b>Total</b>  | <b>no.</b>  | <b>2 967</b>  | <b>1 712</b> | <b>1 506</b> | <b>1 588</b> | <b>808</b>   | <b>149</b>   | <b>136</b>  | <b>494</b>   | <b>9 248</b>  |
| Estimated Indigenous potential population State/Territory delivered disability support services (i)               |             |               |              |              |              |              |              |             |              |               |
| 0-4 years   | no.         | np            | np           | np           | np           | np           | np           | np          | np           | 1 992         |
| 5-14 years  | no.         | np            | np           | np           | np           | np           | np           | np          | np           | 8 364         |



**Table 14A.45 Users of total NDA State/Territory delivered disability support services (aged 0-64 years) as a proportion of the indigenous estimated potential population, by age group (a), (b), (c), (d), (e)**

|   | <i>Unit</i> | <i>NSW</i>    | <i>Vic</i>   | <i>Qld</i>   | <i>WA</i>    | <i>SA</i>    | <i>Tas</i>   | <i>ACT</i>  | <i>NT</i>    | <i>Aust</i>   |
|---|-------------|---------------|--------------|--------------|--------------|--------------|--------------|-------------|--------------|---------------|
| 15-24 years   | no.         | np            | np           | np           | np           | np           | np           | np          | np           | 3 471         |
| 25-34 years   | no.         | np            | np           | np           | np           | np           | np           | np          | np           | 3 029         |
| 35-44 years   | no.         | np            | np           | np           | np           | np           | np           | np          | np           | 4 743         |
| 45-54 years   | no.         | np            | np           | np           | np           | np           | np           | np          | np           | 5 885         |
| 55-64 years   | no.         | np            | np           | np           | np           | np           | np           | np          | np           | 6 081         |
| 0-49 years  | no.         | np            | np           | np           | np           | np           | np           | np          | np           | 24 640        |
| <b>Total</b>  | <b>no.</b>  | <b>12 054</b> | <b>2 758</b> | <b>7 997</b> | <b>4 400</b> | <b>1 754</b> | <b>1 218</b> | <b>317</b>  | <b>3 068</b> | <b>33 566</b> |
| Proportion of the Indigenous potential population State/Territory delivered disability support services |             |               |              |              |              |              |              |             |              |               |
| 0-4 years   | %           | 78.3          | 113.3        | 16.2         | 24.6         | 73.3         | 50.0         | 326.8       | 14.4         | 53.4          |
| 5-14 years  | %           | 31.8          | 48.2         | 15.0         | 48.7         | 38.0         | 6.4          | 83.6        | 18.7         | 29.5          |
| 15-24 years   | %           | 50.5          | 128.4        | 48.4         | 116.8        | 97.1         | 29.3         | 38.3        | 29.2         | 62.7          |
| 25-34 years   | %           | 23.2          | 79.1         | 32.7         | 46.7         | 63.4         | 11.2         | 23.4        | 19.9         | 34.6          |
| 35-44 years   | %           | 12.4          | 57.3         | 21.2         | 28.3         | 54.6         | 12.9         | 9.4         | 18.8         | 22.8          |
| 45-54 years   | %           | 7.4           | 43.3         | 12.3         | 17.7         | 34.1         | 7.8          | np          | 11.5         | 14.7          |
| 55-64 years   | %           | 4.4           | 33.6         | 5.0          | 11.9         | 18.7         | 2.5          | np          | 9.5          | 8.9           |
| 0-49 years  | %           | 30.8          | 69.5         | 23.4         | 46.5         | 55.7         | 14.5         | 54.2        | 19.2         | 33.7          |
| <b>Total</b>  | <b>%</b>    | <b>24.6</b>   | <b>62.1</b>  | <b>18.8</b>  | <b>36.1</b>  | <b>46.1</b>  | <b>12.2</b>  | <b>42.9</b> | <b>16.1</b>  | <b>27.6</b>   |

- (a) State/Territory delivered disability support services include any of accommodation support, community support (includes case management/co-ordination), community access and respite.
- (b) Some jurisdictions provide specialist psychiatric services under the NDA, whilst others provide these services under health. For comparability, the indicator excludes those who only receive specialist psychiatric disability services. This does not exclude those people with a psychiatric condition who receive other specialist disability services.
- (c) Potential population is calculated using the revised method. Potential population has been recalculated based on updated data available from the 2009 SDAC. The potential population has been backcast to the 2008-09 year. Data previously published in the 2011 Report have been updated in this Report. See section 14.7 for information on how the potential population is defined.
- (d) Changes in the linking procedures implemented for 2007-08 and 2008-09 data may have the effect of slightly increasing the number of unique service users within the CSTDA NMDS for these years.
- (e) Total service users for Australia may not be the sum of components because individuals may have accessed services in more than one State or Territory during the 12 month period.
- (f) Includes people with not stated age.
- (g) at 30 June 2007.
- (h) at 30 June 2008.
- (i) at 30 June 2009.
- np** Not published.

**Table 14A.45 Users of total NDA State/Territory delivered disability support services (aged 0-64 years) as a proportion of the indigenous estimated potential population, by age group (a), (b), (c), (d), (e)**

| <i>Unit</i> | <i>NSW</i> | <i>Vic</i> | <i>Qld</i> | <i>WA</i> | <i>SA</i> | <i>Tas</i> | <i>ACT</i> | <i>NT</i> | <i>Aust</i> |
|-------------|------------|------------|------------|-----------|-----------|------------|------------|-----------|-------------|
|-------------|------------|------------|------------|-----------|-----------|------------|------------|-----------|-------------|

*Source:* AIHW (unpublished) (2011) Disability Support Services 2008-09: Report on services provided under the Commonwealth State/Territory Disability Agreement and the National Disability Agreement, Cat. no. DIS 58; AIHW 2007-08: National Data on Services Provided under the CSTDA Cat. no. DIS 56 ; AIHW analysis of the ABS Indigenous Projected Population 2009; ABS 2009 Survey of Disability, Ageing and Carers; ABS Indigenous Projected Population 2007 and 2008 (ABS cat. no. 3238.0, 2009); 2003 Survey of Disability, Ageing and Carers; 2006 Census of Population and Housing.

Table 14A.46

Table 14A.46 **Users of NDA accommodation support services, by Indigenous status (a), (b), (c), (d), (e), (f), (g), (h)**

|   | <i>NSW (i)</i> | <i>Vic</i> | <i>Qld</i> | <i>WA</i> | <i>SA</i> | <i>Tas</i> | <i>ACT (j)</i> | <i>NT</i> | <i>Aust</i> |
|---|----------------|------------|------------|-----------|-----------|------------|----------------|-----------|-------------|
| Indigenous people using accommodation support services per 1000 Indigenous population aged under 65 years         |                |            |            |           |           |            |                |           |             |
| 2003-04   | 1.2            | 10.4       | 1.5        | 2.7       | 2.6       | 1.7        | np             | 1.8       | 2.2         |
| 2004-05   | 1.1            | 8.5        | 1.6        | 2.7       | 3.3       | 1.7        | np             | 1.8       | 2.1         |
| 2005-06   | 1.3            | 11.0       | 1.7        | 2.4       | 3.5       | 1.5        | np             | 1.9       | 2.4         |
| 2006-07   | 1.3            | 10.6       | 2.0        | 4.0       | 5.0       | 1.5        | np             | 2.3       | 2.8         |
| 2007-08   | 1.4            | 9.3        | 2.0        | 3.1       | 8.1       | 1.4        | np             | 2.3       | 2.8         |
| 2008-09   | 1.8            | 7.2        | 2.0        | 3.4       | 7.3       | 1.9        | 1.8            | 2.2       | 2.8         |
| 2009-10   | 2.2            | 7.0        | 2.1        | 4.2       | 7.2       | 2.1        | 1.8            | 0.7       | 2.8         |
| Indigenous people using accommodation support services per 1000 Indigenous potential population                   |                |            |            |           |           |            |                |           |             |
| 2006-07   | 14.6           | 111.2      | 33.5       | 61.5      | 75.4      | 22.2       | np             | 42.3      | 39.1        |
| 2007-08   | 15.8           | 104.0      | 35.0       | 46.8      | 120.4     | 20.1       | np             | 43.6      | 39.7        |
| 2008-09   | 23.4           | 89.9       | 38.7       | 56.9      | 119.9     | 30.2       | 25.9           | 46.9      | 44.3        |
| 2009-10   | 28.4           | 87.4       | 40.8       | 70.0      | 118.6     | 32.0       | 25.3           | 15.6      | 45.1        |
| Non-Indigenous people using accommodation support services per 1000 non-Indigenous population aged under 65 years |                |            |            |           |           |            |                |           |             |
| 2003-04   | 1.1            | 1.8        | 1.3        | 1.7       | 3.1       | 2.6        | 1.1            | 0.8       | 1.5         |
| 2004-05   | 1.0            | 1.4        | 1.4        | 1.8       | 3.4       | 2.8        | 1.2            | 0.6       | 1.5         |
| 2005-06   | 1.2            | 1.7        | 1.4        | 1.9       | 3.3       | 2.7        | 1.1            | 0.8       | 1.6         |
| 2006-07   | 1.2            | 1.6        | 1.5        | 2.0       | 3.4       | 2.7        | 1.1            | 0.9       | 1.6         |
| 2007-08   | 1.2            | 1.6        | 1.5        | 1.8       | 3.3       | 2.7        | 1.1            | 0.8       | 1.6         |
| 2008-09   | 1.4            | 1.4        | 1.5        | 1.6       | 3.5       | 2.8        | 1.3            | 0.7       | 1.6         |
| 2009-10   | 1.4            | 1.5        | 1.5        | 1.4       | 3.6       | 3.0        | 1.4            | 0.3       | 1.6         |
| Non-Indigenous people using accommodation support services per 1000 non-Indigenous potential population           |                |            |            |           |           |            |                |           |             |
| 2006-07   | 31.7           | 41.5       | 38.1       | 50.3      | 84.3      | 66.9       | 27.6           | 27.9      | 42.0        |
| 2007-08   | 30.5           | 41.3       | 37.0       | 46.1      | 82.1      | 68.2       | 20.3           | 25.1      | 40.5        |
| 2008-09   | 40.2           | 39.2       | 41.9       | 44.9      | 97.4      | 77.7       | 38.7           | 24.6      | 45.8        |
| 2009-10   | 41.3           | 41.3       | 41.4       | 41.3      | 98.8      | 80.8       | 39.1           | 11.5      | 46.3        |
| All people using accommodation services per 1000 total population aged under 65 years                             |                |            |            |           |           |            |                |           |             |
| 2003-04   | 1.1            | 1.9        | 1.3        | 1.7       | 3.1       | 2.6        | 1.1            | 1.1       | 1.6         |
| 2004-05   | 1.0            | 1.4        | 1.4        | 1.8       | 3.4       | 2.7        | 1.1            | 1.0       | 1.5         |
| 2005-06   | 1.2            | 1.8        | 1.4        | 1.9       | 3.3       | 2.6        | 1.1            | 1.1       | 1.6         |
| 2006-07   | 1.2            | 1.7        | 1.5        | 2.0       | 3.4       | 2.6        | 1.1            | 1.3       | 1.7         |
| 2007-08   | 1.2            | 1.7        | 1.5        | 1.9       | 3.4       | 2.7        | 1.1            | 1.3       | 1.6         |
| 2008-09   | 1.4            | 1.4        | 1.5        | 1.6       | 3.6       | 2.8        | 1.3            | 1.2       | 1.7         |
| 2009-10   | 1.5            | 1.5        | 1.5        | 1.5       | 3.7       | 2.9        | 1.4            | 0.5       | 1.7         |

**Table 14A.46 Users of NDA accommodation support services, by Indigenous status (a), (b), (c), (d), (e), (f), (g), (h)**

|     | <i>NSW (i)</i>   | <i>Vic</i> | <i>Qld</i> | <i>WA</i> | <i>SA</i> | <i>Tas</i> | <i>ACT (j)</i> | <i>NT</i> | <i>Aust</i> |
|-----|--|------------|------------|-----------|-----------|------------|----------------|-----------|-------------|
| (a) | Service user data are estimates after a statistical linkage key is used to account for individuals who received services from more than one service type outlet during each period. Individuals might have accessed services from more than one State or Territory. Where Indigenous status was inconsistently recorded for the same user, the user was counted as an Indigenous Australian.   |            |            |           |           |            |                |           |             |
| (b) | Data for all service users exclude 954 service users in 2003-04, 2436 service users in 2004-05, 687 service users in 2005-06, 868 service users in 2006-07, 686 service users in 2007-08 and 748 service users in 2008-09 whose indigenous status was not reported, thus accommodation support service users per 1000 total population aged under 65 years may differ from other tables. Due to the relatively high missing rate of data, care should be taken when interpreting this indicator. |            |            |           |           |            |                |           |             |
| (c) | Data for users of NDA funded accommodation support services exclude specialist psychiatric disability services identified by the jurisdiction.   |            |            |           |           |            |                |           |             |
| (d) | Data for users per 1000 people are derived by dividing the number of service users by the number of people aged under 65 years, multiplied by 1000. Data for users per 1000 potential population are derived by dividing the number of service users by the potential population, multiplied by 1000. The potential populations for 2006-07 have been revised, therefore data for service users per 1000 potential population can differ from those in the 2009 Report.                          |            |            |           |           |            |                |           |             |
| (e) | Data quality continues to improve following the implementation of the NDA NMDS. However, this indicator needs to be interpreted with care due to a number of factors affecting data quality. Differences in service type outlet and service user response rates between jurisdictions and across years, for example, should be taken into account when interpreting these data.  |            |            |           |           |            |                |           |             |
| (f) | Changes to linking procedures implemented for 2007-08 and 2008-09 data may have the effect of slightly increasing the number of unique service users within the CSTDA NMDS for these years.  |            |            |           |           |            |                |           |             |
| (g) | Comparisons of the Indigenous and non-Indigenous populations' access to services per 1000 people should be undertaken with care. The need for services is likely to be greater for Indigenous people than non-Indigenous people due to the higher prevalence of disability. The AIHW estimated that the proportion of Indigenous people aged over 18 years who had a profound or severe core activity limitation is approximately 2.4 times that of non-Indigenous people.                       |            |            |           |           |            |                |           |             |
| (h) | Potential population is calculated using the unrevised method. Potential population has been recalculated based on updated data available from the 2009 SDAC. The potential population has been backcast to the 2008-09 year. Data previously published in the 2011 Report have been updated in this Report. See section 14.7 for information on how the potential population is defined.  |            |            |           |           |            |                |           |             |
| (i) | NSW has experienced low and varied data response rates. This led to underreporting of service user numbers for all years and affected the comparability of the data across the years and with other jurisdictions.   |            |            |           |           |            |                |           |             |
| (j) | ACT data for service users per 1000 Indigenous people/potential population are not published for some years as they are based on a small number of service users.  |            |            |           |           |            |                |           |             |

**np** Not published.

**Table 14A.46 Users of NDA accommodation support services, by Indigenous status (a), (b), (c), (d), (e), (f), (g), (h)**

|                | <i>NSW (i)</i>   | <i>Vic</i> | <i>Qld</i> | <i>WA</i> | <i>SA</i> | <i>Tas</i> | <i>ACT (j)</i> | <i>NT</i> | <i>Aust</i> |
|----------------|--|------------|------------|-----------|-----------|------------|----------------|-----------|-------------|
| <i>Source:</i> | AIHW (unpublished) (2011) Disability Support Services 2008-09: Report on services provided under the Commonwealth State/Territory Disability Agreement and the National Disability Agreement, Cat. no. DIS 58; AIHW 2007-08: National Data on Services Provided under the CSTDA Cat. no. DIS 56 ; AIHW analysis of the ABS Indigenous Projected Population 2009; ABS 2009 Survey of Disability, Ageing and Carers; AIHW (unpublished), derived from ABS 2004, <i>Experimental Projections of the Aboriginal and Torres Strait Islander Population 30 June 2001 to 30 June 2009</i> , Cat. no. 3238.0, ABS 2004, <i>2003 Survey of Disability, Ageing and Carers</i> , Cat. no. 4430.0, ABS 2005 (and previous year), <i>Australian Demographic Statistics June 2004, 2005, 2006, 2007, 2008</i> , Cat. no. 3101.0, ABS 2006 <i>Census of Population and Housing (CDATA Online)</i> , ABS 2007, <i>Population by Age and Sex, Australian States and Territories, Jun 2007, 2006</i> , Cat. no. 3201.0 and ABS 2009, <i>Experimental Estimates and Projections, Aboriginal and Torres Strait Islander Australians, 1991 to 2021</i> , Cat. no. 3238.0. |            |            |           |           |            |                |           |             |

Table 14A.47

**Table 14A.47 Users of NDA community support services, by Indigenous status (a), (b), (c), (d), (e), (f), (g), (h)**

|   | <i>NSW (i)</i> | <i>Vic</i> | <i>Qld</i> | <i>WA</i> | <i>SA</i> | <i>Tas</i> | <i>ACT</i> | <i>NT</i> | <i>Aust</i> |
|---|----------------|------------|------------|-----------|-----------|------------|------------|-----------|-------------|
| Indigenous people using community support services per 1000 Indigenous population aged under 65 years         |                |            |            |           |           |            |            |           |             |
| 2004-05   | 5.6            | 15.2       | 4.6        | 13.7      | 18.9      | 1.9        | 7.0        | 5.0       | 7.6         |
| 2005-06   | 6.6            | 29.3       | 5.0        | 10.2      | 18.1      | 2.3        | 7.3        | 1.9       | 8.0         |
| 2006-07   | 8.1            | 35.8       | 5.5        | 16.1      | 18.1      | 3.3        | 9.7        | 2.5       | 9.9         |
| 2007-08   | 8.9            | 30.3       | 6.7        | 13.4      | 23.8      | 3.0        | 12.7       | 11.8      | 11.2        |
| 2008-09   | 11.6           | 37.5       | 7.3        | 17.4      | 24.6      | 3.5        | 17.4       | 11.0      | 13.1        |
| 2009-10   | 15.6           | 38.1       | 7.8        | 18.4      | 24.6      | 5.9        | 29.0       | 8.2       | 14.4        |
| Indigenous people using community support services per 1000 Indigenous potential population                   |                |            |            |           |           |            |            |           |             |
| 2006-07   | 91.2           | 375.0      | 91.2       | 246.3     | 271.3     | 46.8       | 126.1      | 47.3      | 138.7       |
| 2007-08   | 104.0          | 338.6      | 114.3      | 199.2     | 354.3     | 42.6       | 161.9      | 228.6     | 160.0       |
| 2008-09   | 149.9          | 469.5      | 138.5      | 288.8     | 406.3     | 54.5       | 249.7      | 237.2     | 208.0       |
| 2009-10   | 202.6          | 476.8      | 148.9      | 304.1     | 403.0     | 92.0       | 413.7      | 175.4     | 228.9       |
| Non-Indigenous people using community support services per 1000 non-Indigenous population aged under 65 years |                |            |            |           |           |            |            |           |             |
| 2004-05   | 3.1            | 2.6        | 2.4        | 6.7       | 7.2       | 4.8        | 8.4        | 4.5       | 3.6         |
| 2005-06   | 3.4            | 5.5        | 2.6        | 6.4       | 8.4       | 5.3        | 6.7        | 2.2       | 4.5         |
| 2006-07   | 3.3            | 7.0        | 2.7        | 7.0       | 8.6       | 5.3        | 10.0       | 2.0       | 5.0         |
| 2007-08   | 3.4            | 7.0        | 3.1        | 5.9       | 10.1      | 6.0        | 10.5       | 5.0       | 5.2         |
| 2008-09   | 4.1            | 8.0        | 3.3        | 6.0       | 10.6      | 6.9        | 10.8       | 2.3       | 5.7         |
| 2009-10   | 4.7            | 8.0        | 3.5        | 5.9       | 11.2      | 10.2       | 10.6       | 1.6       | 6.1         |
| Non-Indigenous people using community support services per 1000 non-Indigenous potential population           |                |            |            |           |           |            |            |           |             |
| 2006-07   | 86.1           | 177.4      | 69.6       | 178.4     | 215.3     | 131.2      | 260.6      | 62.8      | 128.6       |
| 2007-08   | 87.6           | 178.1      | 79.0       | 150.7     | 250.8     | 147.7      | 192.0      | 154.7     | 131.1       |
| 2008-09   | 116.2          | 225.3      | 93.8       | 171.1     | 292.3     | 189.4      | 313.2      | 79.6      | 162.4       |
| 2009-10   | 135.0          | 224.7      | 98.2       | 167.4     | 307.3     | 278.1      | 307.6      | 53.6      | 171.6       |
| All people using community support services per 1000 total population aged under 65 years                     |                |            |            |           |           |            |            |           |             |
| 2004-05   | 3.2            | 2.7        | 2.5        | 6.9       | 7.5       | 4.7        | 8.4        | 4.7       | 3.7         |
| 2005-06   | 3.5            | 5.7        | 2.7        | 6.5       | 8.6       | 5.2        | 6.7        | 2.1       | 4.6         |
| 2006-07   | 3.5            | 7.2        | 2.8        | 7.3       | 8.8       | 5.2        | 10.0       | 2.2       | 5.2         |
| 2007-08   | 3.5            | 7.2        | 3.3        | 6.2       | 10.4      | 5.8        | 10.5       | 7.1       | 5.3         |
| 2008-09   | 4.3            | 8.2        | 3.5        | 6.4       | 10.9      | 6.8        | 10.9       | 5.0       | 5.9         |
| 2009-10   | 5.0            | 8.2        | 3.6        | 6.3       | 11.5      | 10.0       | 10.9       | 3.6       | 6.3         |

(a) Service user data are estimates after a statistical linkage key is used to account for individuals who received services from more than one service type outlet during each period. Individuals might have accessed services from more than one State or Territory. Where Indigenous status was inconsistently recorded for the same user, the user was counted as an Indigenous Australian.

**Table 14A.47 Users of NDA community support services, by Indigenous status (a), (b), (c), (d), (e), (f), (g), (h)**

|     | NSW (i)  | Vic | Qld | WA | SA | Tas | ACT | NT | Aust |
|-----|--|-----|-----|----|----|-----|-----|----|------|
| (b) | Data for all service users exclude 27 356 service users in 2004-05, 15 013 service users in 2005-06, 5451 service users in 2006-07, 5788 service users in 2007-08 and 9197 service users in 2008-09 whose Indigenous status was not reported, thus community support service users per 1000 total population may differ from other tables. Due to the relatively high missing rate of data, care should be taken when interpreting this indicator.                         |     |     |    |    |     |     |    |      |
| (c) | Data for users of NDA funded community support services exclude specialist psychiatric disability services identified by the jurisdiction.   |     |     |    |    |     |     |    |      |
| (d) | Data for users per 1000 people are derived by dividing the number of service users by the number of people aged under 65 years, multiplied by 1000. Data for users per 1000 potential population are derived by dividing the number of service users by the potential population, multiplied by 1000. The potential populations for 2006-07 have been revised, therefore data for service users per 1000 potential population can differ from those in the 2009 Report.    |     |     |    |    |     |     |    |      |
| (e) | Data quality continues to improve following the implementation of the NDA NMDS. However, this indicator needs to be interpreted with care due to a number of factors affecting data quality. Differences in service type outlet and service user response rates between jurisdictions and across years, for example, should be taken into account when interpreting these data.  |     |     |    |    |     |     |    |      |
| (f) | Changes to linking procedures implemented for 2007-08 and 2008-09 data may have the effect of slightly increasing the number of unique service users within the CSTDA NMDS for these years.  |     |     |    |    |     |     |    |      |
| (g) | Comparisons of the Indigenous and non-Indigenous populations' access to services per 1000 people should be undertaken with care. The need for services is likely to be greater for Indigenous people than non-Indigenous people due to the higher prevalence of disability. The AIHW estimated that the proportion of Indigenous people aged over 18 years who had a profound or severe core activity limitation is approximately 2.4 times that of non-Indigenous people. |     |     |    |    |     |     |    |      |
| (h) | Potential population is calculated using the unrevised method. Potential population has been recalculated based on updated data available from the 2009 SDAC. The potential population has been backcast to the 2008-09 year. Data previously published in the 2011 Report have been updated in this Report. See section 14.7 for information on how the potential population is defined.  |     |     |    |    |     |     |    |      |
| (i) | NSW has experienced low and varied data response rates. This led to underreporting of service user numbers for all years and affected the comparability of the data across the years and with other jurisdictions.   |     |     |    |    |     |     |    |      |

*Source:* AIHW (unpublished) (2011) Disability Support Services 2008-09: Report on services provided under the Commonwealth State/Territory Disability Agreement and the National Disability Agreement, Cat. no. DIS 58; AIHW 2007-08: National Data on Services Provided under the CSTDA Cat. no. DIS 56 ; AIHW analysis of the ABS Indigenous Projected Population 2009; ABS 2009 Survey of Disability, Ageing and Carers; AIHW (unpublished), derived from ABS 2004, *Experimental Projections of the Aboriginal and Torres Strait Islander Population 30 June 2001 to 30 June 2009*, Cat. no. 3238.0, ABS 2004, *2003 Survey of Disability, Ageing and Carers*, Cat. no. 4430.0, ABS 2005 (and previous year), *Australian Demographic Statistics June 2004, 2005, 2006, 2007, 2008*, Cat. no. 3101.0, ABS *2006 Census of Population and Housing (CDATA Online)*, ABS 2007, *Population by Age and Sex, Australian States and Territories, Jun 2007, 2006*, Cat. no. 3201.0 and ABS 2009, *Experimental Estimates and Projections, Aboriginal and Torres Strait Islander Australians, 1991 to 2021*, Cat. no. 3238.0.

Table 14A.48

**Table 14A.48 Users of NDA community access services, by Indigenous status (a), (b), (c), (d), (e), (f), (g), (h)**

|  | <i>NSW (i)</i> | <i>Vic</i> | <i>Qld</i> | <i>WA</i> | <i>SA</i> | <i>Tas</i> | <i>ACT (j)</i> | <i>NT</i> | <i>Aust</i> |
|--|----------------|------------|------------|-----------|-----------|------------|----------------|-----------|-------------|
| Indigenous people using community access services per 1000 Indigenous population aged under 65 years         |                |            |            |           |           |            |                |           |             |
| 2003-04  | 1.4            | 10.8       | 1.7        | 3.9       | 3.0       | 2.0        | np             | 1.6       | 2.6         |
| 2004-05  | 1.5            | 9.2        | 1.8        | 2.4       | 4.0       | 2.1        | np             | 1.5       | 2.3         |
| 2005-06  | 1.7            | 10.9       | 2.0        | 1.9       | 4.0       | 2.4        | np             | 2.0       | 2.5         |
| 2006-07  | 2.2            | 11.8       | 2.5        | 2.6       | 3.6       | 1.8        | 1.2            | 2.3       | 3.0         |
| 2007-08  | 2.4            | 11.2       | 2.7        | 2.9       | 4.5       | 2.3        | np             | 1.7       | 3.1         |
| 2008-09  | 2.7            | 11.9       | 2.8        | 3.1       | 5.2       | 2.3        | 1.1            | 2.2       | 3.4         |
| 2009-10  | 3.5            | 11.5       | 3.0        | 4.2       | 4.3       | 2.2        | 1.8            | 0.9       | 3.6         |
| Indigenous people using community access services per 1000 Indigenous potential population                   |                |            |            |           |           |            |                |           |             |
| 2006-07  | 25.2           | 123.7      | 42.2       | 39.0      | 53.4      | 26.2       | 15.0           | 43.2      | 42.1        |
| 2007-08  | 28.3           | 125.6      | 45.9       | 42.7      | 66.7      | 32.5       | np             | 33.3      | 44.8        |
| 2008-09  | 35.3           | 149.3      | 54.3       | 52.2      | 86.5      | 35.2       | 16.2           | 47.6      | 54.9        |
| 2009-10  | 44.7           | 143.6      | 57.4       | 69.3      | 70.1      | 34.5       | 25.3           | 18.3      | 57.4        |
| Non-Indigenous people using community access services per 1000 non-Indigenous population aged under 65 years |                |            |            |           |           |            |                |           |             |
| 2003-04  | 1.1            | 2.5        | 1.4        | 3.6       | 3.1       | 3.3        | 1.0            | 1.1       | 2.0         |
| 2004-05  | 1.1            | 2.0        | 1.7        | 2.5       | 3.3       | 3.3        | 0.9            | 1.2       | 1.8         |
| 2005-06  | 1.3            | 2.7        | 1.8        | 2.3       | 3.2       | 3.4        | 1.0            | 1.1       | 2.0         |
| 2006-07  | 1.8            | 2.9        | 2.0        | 2.2       | 3.5       | 3.2        | 1.0            | 1.3       | 2.3         |
| 2007-08  | 1.9            | 2.7        | 2.0        | 2.0       | 3.7       | 3.4        | 1.3            | 1.0       | 2.3         |
| 2008-09  | 2.0            | 2.6        | 2.0        | 2.0       | 3.9       | 3.2        | 1.4            | 1.3       | 2.3         |
| 2009-10  | 2.3            | 2.5        | 2.0        | 1.9       | 4.2       | 3.3        | 1.3            | 0.6       | 2.4         |
| Non-Indigenous people using community access services per 1000 non-Indigenous potential population           |                |            |            |           |           |            |                |           |             |
| 2006-07  | 46.4           | 73.2       | 50.7       | 55.9      | 88.3      | 79.0       | 25.3           | 42.0      | 58.6        |
| 2007-08  | 49.3           | 67.7       | 50.1       | 51.0      | 90.7      | 83.7       | 24.0           | 29.6      | 57.4        |
| 2008-09  | 58.2           | 72.9       | 55.5       | 57.6      | 108.0     | 88.2       | 40.4           | 43.0      | 65.3        |
| 2009-10  | 64.2           | 70.0       | 55.3       | 55.0      | 116.0     | 89.6       | 38.2           | 20.9      | 66.6        |
| All people using community access services per 1000 total population aged under 65 years                     |                |            |            |           |           |            |                |           |             |
| 2003-04  | 1.1            | 2.6        | 1.4        | 3.6       | 3.1       | 3.2        | 1.0            | 1.3       | 2.0         |
| 2004-05  | 1.1            | 2.0        | 1.7        | 2.5       | 3.3       | 3.2        | 0.9            | 1.2       | 1.8         |
| 2005-06  | 1.3            | 2.8        | 1.8        | 2.3       | 3.2       | 3.4        | 1.0            | 1.4       | 2.1         |
| 2006-07  | 1.8            | 2.9        | 2.0        | 2.2       | 3.5       | 3.1        | 1.0            | 1.6       | 2.3         |
| 2007-08  | 1.9            | 2.7        | 2.0        | 2.0       | 3.7       | 3.3        | 1.3            | 1.2       | 2.3         |
| 2008-09  | 2.1            | 2.7        | 2.0        | 2.1       | 4.0       | 3.2        | 1.4            | 1.6       | 2.3         |
| 2009-10  | 2.3            | 2.5        | 2.0        | 2.0       | 4.2       | 3.2        | 1.3            | 0.7       | 2.4         |

(a) Service user data are estimates after a statistical linkage key is used to account for individuals who received services from more than one service type outlet during each period. Individuals might have accessed services from more than one State or Territory. Where Indigenous status was inconsistently recorded for the same user, the user was counted as an Indigenous Australian.



**Table 14A.48 Users of NDA community access services, by Indigenous status (a), (b), (c), (d), (e), (f), (g), (h)**

|     | NSW (i)   | Vic | Qld | WA | SA | Tas | ACT (j) | NT | Aust |
|-----|---|-----|-----|----|----|-----|---------|----|------|
| (b) | Data for all service users exclude 7283 service users in 2003-04, 5222 service users in 2004-05, 3057 service users in 2005-06, 3218 service users in 2006-07, 3499 service users in 2007-08 and 4875 service users in 2008-09 whose Indigenous status was not reported, thus community access service users per 1000 total population may differ from other tables. This 'not reported' total includes recreation/holiday programs (service type 3.02) who were not required to complete the item on Indigenous status; however those who did provide a response are included in the data. Due to the relatively high missing rate of data, care should be taken when interpreting this indicator. |     |     |    |    |     |         |    |      |
| (c) | Data for users of NDA funded community access services exclude specialist psychiatric disability services identified by the jurisdiction.   |     |     |    |    |     |         |    |      |
| (d) | Data for users per 1000 people are derived by dividing the number of service users by the number of people aged under 65 years, multiplied by 1000. Data for users per 1000 potential population are derived by dividing the number of service users by the potential population, multiplied by 1000. The potential populations for 2006-07 have been revised, therefore data for service users per 1000 potential population can differ from those in the 2009 Report.   |     |     |    |    |     |         |    |      |
| (e) | Data quality continues to improve following the implementation of the NDA NMDS. However, this indicator needs to be interpreted with care due to a number of factors affecting data quality. Differences in service type outlet and service user response rates between jurisdictions and across years, for example, should be taken into account when interpreting these data.   |     |     |    |    |     |         |    |      |
| (f) | Changes to linking procedures implemented for 2007-08 and 2008-09 data may have the effect of slightly increasing the number of unique service users within the CSTDA NMDS for these years.   |     |     |    |    |     |         |    |      |
| (g) | Comparisons of the Indigenous and non-Indigenous populations' access to services per 1000 people should be undertaken with care. The need for services is likely to be greater for Indigenous people than non-Indigenous people due to the higher prevalence of disability. The AIHW estimated that the proportion of Indigenous people aged over 18 years who had a profound or severe core activity limitation is approximately 2.4 times that of non-Indigenous people.  |     |     |    |    |     |         |    |      |
| (h) | Potential population is calculated using the unrevised method. Potential population has been recalculated based on updated data available from the 2009 SDAC. The potential population has been backcast to the 2008-09 year. Data previously published in the 2011 Report have been updated in this Report. See section 14.7 for information on how the potential population is defined.   |     |     |    |    |     |         |    |      |
| (i) | NSW has experienced low and varied data response rates. This led to underreporting of service user numbers for all years and affected the comparability of the data across the years and with other jurisdictions.  |     |     |    |    |     |         |    |      |
| (j) | ACT data for service users per 1000 Indigenous people/potential population are not published for some years as they are based on a small number of service users.   |     |     |    |    |     |         |    |      |

**np** Not published

*Source:* AIHW (unpublished) (2011) Disability Support Services 2008-09: Report on services provided under the Commonwealth State/Territory Disability Agreement and the National Disability Agreement, Cat. no. DIS 58; AIHW 2007-08: National Data on Services Provided under the CSTDA Cat. no. DIS 56 ; AIHW analysis of the ABS Indigenous Projected Population 2009; ABS 2009 Survey of Disability, Ageing and Carers; AIHW (unpublished), derived from ABS 2004, *Experimental Projections of the Aboriginal and Torres Strait Islander Population 30 June 2001 to 30 June 2009*, Cat. no. 3238.0, ABS 2004, *2003 Survey of Disability, Ageing and Carers*, Cat. no. 4430.0, ABS 2005 (and previous years), *Australian Demographic Statistics June 2003, 2004, 2005, 2006, 2007, 2008*, Cat. no. 3101.0, ABS 2006 *Census of Population and Housing (CDATA Online)*, ABS 2007 (and previous year), *Population by Age and Sex, Australian States and Territories, Jun 2007, 2006*, Cat. no. 3201.0, ABS 2009, *Experimental Estimates and Projections and Aboriginal and Torres Strait Islander Australians, 1991 to 2021*, Cat. no. 3238.0.

Table 14A.49

**Table 14A.49 Users of NDA respite services, by Indigenous status (a), (b), (c), (d), (e), (f), (g)**

|   | <i>NSW (h)</i> | <i>Vic</i> | <i>Qld</i> | <i>WA (i)</i> | <i>SA Tas (j)</i> | <i>ACT</i> | <i>NT</i> | <i>Aust</i> |     |
|---|----------------|------------|------------|---------------|-------------------|------------|-----------|-------------|-----|
| Indigenous people using respite services per 1000 Indigenous population aged under 65 years         |                |            |            |               |                   |            |           |             |     |
| 2004-05   | 1.4            | 8.2        | 1.5        | 2.6           | 2.2               | np         | np        | 0.9         | 1.9 |
| 2005-06   | 1.6            | 16.2       | 2.0        | 3.8           | 2.1               | 0.4        | 1.4       | 1.2         | 2.9 |
| 2006-07   | 2.3            | 16.0       | 2.2        | 4.4           | 1.9               | 0.6        | 1.6       | 1.8         | 3.3 |
| 2007-08   | 2.6            | 15.0       | 2.3        | 4.8           | 1.8               | 0.4        | 2.5       | 1.4         | 3.3 |
| 2008-09   | 3.2            | 18.0       | 2.3        | 4.5           | 2.1               | 0.4        | 2.9       | 1.3         | 3.7 |
| 2009-10   | 3.8            | 15.7       | 2.3        | 6.6           | 2.2               | 0.5        | 2.2       | 0.4         | 3.9 |
| Non-Indigenous people using respite services per 1000 non-Indigenous population aged under 65 years |                |            |            |               |                   |            |           |             |     |
| 2004-05   | 0.7            | 1.3        | 1.0        | 1.5           | 1.1               | 0.7        | 1.0       | 0.9         | 1.0 |
| 2005-06   | 0.8            | 2.2        | 1.1        | 1.4           | 1.1               | 0.7        | 1.0       | 0.9         | 1.3 |
| 2006-07   | 0.9            | 2.3        | 1.2        | 1.5           | 1.2               | 0.7        | 1.0       | 1.3         | 1.4 |
| 2007-08   | 1.0            | 2.5        | 1.2        | 1.4           | 1.2               | 0.7        | 1.0       | 0.8         | 1.5 |
| 2008-09   | 1.2            | 2.6        | 1.2        | 1.3           | 1.3               | 0.8        | 1.1       | 0.8         | 1.6 |
| 2009-10   | 1.4            | 2.4        | 1.2        | 1.4           | 1.3               | 0.9        | 1.1       | 0.2         | 1.6 |
| All people using respite services per 1000 total population aged under 65 years                     |                |            |            |               |                   |            |           |             |     |
| 2004-05   | 0.7            | 1.4        | 1.0        | 1.6           | 1.1               | 0.6        | 1.0       | 0.9         | 1.0 |
| 2005-06   | 0.8            | 2.3        | 1.2        | 1.4           | 1.2               | 0.7        | 1.0       | 1.0         | 1.3 |
| 2006-07   | 0.9            | 2.4        | 1.2        | 1.6           | 1.2               | 0.7        | 1.0       | 1.4         | 1.4 |
| 2007-08   | 1.1            | 2.6        | 1.2        | 1.5           | 1.2               | 0.7        | 1.0       | 1.0         | 1.5 |
| 2008-09   | 1.3            | 2.7        | 1.3        | 1.4           | 1.3               | 0.8        | 1.2       | 0.9         | 1.6 |
| 2009-10   | 1.4            | 2.5        | 1.3        | 1.6           | 1.3               | 0.9        | 1.1       | 0.3         | 1.7 |

- (a) Service user data are estimates after a statistical linkage key is used to account for individuals who received services from more than one service type outlet during each period. Individuals might have accessed services from more than one State or Territory. Where Indigenous status was inconsistently recorded for the same user, the user was counted as an Indigenous Australian.
- (b) Data for all service users exclude 3667 service users in 2004-05, 1791 service users in 2005-06, 1879 service users in 2006-07, 1885 service users in 2007-08 and 1832 service users in 2008-09 whose Indigenous status was not reported, thus respite service users per 1000 total population may differ from other tables. Due to the relatively high missing rate of data, care should be taken when interpreting this indicator.
- (c) Data for users of NDA funded respite services exclude specialist psychiatric disability services identified by the jurisdiction.
- (d) Data for users per 1000 people are derived by dividing the number of service users by the number of people aged under 65 years, multiplied by 1000.
- (e) Data quality continues to improve following the implementation of the NDA NMDS. However, this indicator needs to be interpreted with care due to a number of factors affecting data quality. Differences in service type outlet and service user response rates between jurisdictions and across years, for example, should be taken into account when interpreting these data.
- (f) Changes to linking procedures implemented for 2007-08 and 2008-09 data may have the effect of slightly increasing the number of unique service users within the CSTDA NMDS for these years.

**Table 14A.49 Users of NDA respite services, by Indigenous status (a), (b), (c), (d), (e), (f), (g)**

|     | <i>NSW (h)</i>   | <i>Vic</i> | <i>Qld</i> | <i>WA (i)</i> | <i>SA Tas (j)</i> | <i>ACT</i> | <i>NT</i> | <i>Aust</i> |
|-----|--|------------|------------|---------------|-------------------|------------|-----------|-------------|
| (g) | Comparisons of the Indigenous and non-Indigenous populations' access to services per 1000 people should be undertaken with care. The need for services is likely to be greater for Indigenous people than non-Indigenous people due to the higher prevalence of disability. The AIHW estimated that the proportion of Indigenous people aged over 18 years who had a profound or severe core activity limitation is approximately 2.4 times that of non-Indigenous people. |            |            |               |                   |            |           |             |
| (h) | NSW has experienced low and varied data response rates. This led to underreporting of service user numbers for all years and affected the comparability of the data across the years and with other jurisdictions.   |            |            |               |                   |            |           |             |
| (i) | WA data for 2005-06 have been corrected for miscoding of data and, therefore, vary from the data reported in the AIHW report on Disability Support Services in 2005-06.  |            |            |               |                   |            |           |             |
| (j) | Tasmanian and ACT data for 2004-05 for service users per 1000 Indigenous people are not published as they are based on a small number of service users.  |            |            |               |                   |            |           |             |

**np** Not published.

*Source:* AIHW (unpublished) (2011) Disability Support Services 2008-09: Report on services provided under the Commonwealth State/Territory Disability Agreement and the National Disability Agreement, Cat. no. DIS 58; AIHW 2007-08: National Data on Services Provided under the CSTDA Cat. no. DIS 56 ; AIHW analysis of the ABS Indigenous Projected Population 2009; ABS 2009 Survey of Disability, Ageing and Carers; AIHW unpublished, derived from ABS 2004, *Experimental Projections of the Aboriginal and Torres Strait Islander Population 30 June 2001 to 30 June 2009*, Cat. no. 3238.0, ABS 2005 (and previous year), *Australian Demographic Statistics June 2004, 2005, 2006, 2006, 2007, 2008*, Cat. no. 3101.0, ABS 2007, *Population by Age and Sex, Australian States and Territories, Jun 2007*, Cat. no. 3201.0, ABS 2009, *Experimental Estimates and Projections, Aboriginal and Torres Strait Islander Australians, 1991 to 2021*, Cat. no. 3238.0.

Table 14A.50

**Table 14A.50 Users of NDA employment services (aged 15-64 years), by Indigenous status (a), (b), (c), (d), (e), (f), (g)**

|   | <i>NSW (h)</i> | <i>Vic</i> | <i>Qld</i> | <i>WA</i> | <i>SA</i> | <i>Tas</i> | <i>ACT</i> | <i>NT</i> | <i>Aust</i> |
|---|----------------|------------|------------|-----------|-----------|------------|------------|-----------|-------------|
| Indigenous people using employment services per 1000 Indigenous population aged 15–64 years                   |                |            |            |           |           |            |            |           |             |
| 2003-04   | 6.6            | 15.2       | 5.2        | 5.3       | 6.6       | 6.7        | 5.6        | 2.4       | 6.0         |
| 2004-05   | 7.3            | 10.9       | 5.2        | 5.1       | 6.5       | 8.5        | 6.6        | 2.4       | 6.0         |
| 2005-06   | 6.5            | 12.6       | 6.1        | 4.6       | 6.7       | 8.2        | 2.3        | 1.8       | 5.9         |
| 2006-07   | 7.9            | 13.9       | 6.5        | 4.9       | 7.7       | 7.5        | 5.2        | 2.9       | 6.8         |
| 2007-08   | 13.3           | 17.0       | 10.4       | 9.0       | 10.9      | 11.0       | 8.8        | 4.0       | 10.6        |
| 2008-09   | 15.5           | 19.7       | 11.4       | 9.5       | 13.8      | 11.4       | 7.1        | 4.6       | 12.1        |
| 2009-10   | 19.1           | 21.6       | 14.3       | 11.5      | 15.7      | 14.4       | 11.3       | 4.3       | 14.5        |
| Indigenous people using employment services per 1000 Indigenous potential population aged 15–64 years         |                |            |            |           |           |            |            |           |             |
| 2006-07   | 113.5          | 182.7      | 127.4      | 84.2      | 138.1     | 144.8      | 72.9       | 59.7      | 114.3       |
| 2007-08   | 194.0          | 227.8      | 203.6      | 146.7     | 192.6     | 211.0      | 119.8      | 82.9      | 179.2       |
| 2008-09   | 253.6          | 299.1      | 248.9      | 168.6     | 265.2     | 237.1      | 108.0      | 107.1     | 227.0       |
| 2009-10   | 312.7          | 325.0      | 311.2      | 206.8     | 301.6     | 302.2      | 173.0      | 98.1      | 272.1       |
| Non-Indigenous people using employment services per 1000 non-Indigenous population aged 15–64 years           |                |            |            |           |           |            |            |           |             |
| 2003-04   | 4.1            | 5.1        | 4.5        | 4.6       | 5.5       | 5.0        | 3.9        | 3.1       | 4.6         |
| 2004-05   | 4.0            | 5.1        | 4.5        | 4.5       | 5.8       | 5.2        | 3.3        | 2.9       | 4.6         |
| 2005-06   | 4.7            | 5.8        | 5.3        | 5.2       | 6.2       | 6.4        | 3.8        | 3.2       | 5.2         |
| 2006-07   | 5.3            | 6.1        | 5.7        | 5.3       | 7.0       | 6.6        | 4.2        | 3.5       | 5.7         |
| 2007-08   | 6.1            | 6.6        | 6.0        | 5.4       | 7.7       | 7.0        | 4.4        | 4.4       | 6.2         |
| 2008-09   | 7.4            | 7.9        | 7.2        | 5.8       | 9.1       | 8.2        | 5.1        | 3.7       | 7.4         |
| 2009-10   | 8.0            | 8.2        | 7.6        | 6.1       | 9.9       | 8.4        | 5.6        | 3.8       | 7.8         |
| Non-Indigenous people using employment services per 1000 non-Indigenous potential population aged 15–64 years |                |            |            |           |           |            |            |           |             |
| 2006-07   | 188.0          | 208.5      | 192.0      | 180.0     | 235.5     | 225.6      | 139.1      | 168.2     | 196.3       |
| 2007-08   | 214.4          | 222.7      | 201.8      | 179.9     | 262.0     | 243.2      | 101.0      | 203.7     | 210.9       |
| 2008-09   | 284.6          | 298.6      | 265.2      | 211.4     | 332.1     | 302.5      | 183.3      | 190.4     | 278.0       |
| 2009-10   | 309.6          | 307.3      | 280.8      | 228.7     | 363.7     | 313.8      | 204.5      | 189.5     | 295.7       |
| All people using employment services per 1000 total population aged 15–64 years                               |                |            |            |           |           |            |            |           |             |
| 2003-04   | 4.1            | 5.2        | 4.5        | 4.6       | 5.5       | 5.0        | 3.9        | 2.9       | 4.6         |
| 2004-05   | 4.1            | 5.2        | 4.5        | 4.5       | 5.8       | 5.3        | 3.4        | 2.8       | 4.6         |
| 2005-06   | 4.8            | 5.8        | 5.3        | 5.2       | 6.2       | 6.5        | 3.8        | 2.9       | 5.3         |
| 2006-07   | 5.4            | 6.1        | 5.7        | 5.3       | 7.0       | 6.6        | 4.2        | 3.4       | 5.7         |
| 2007-08   | 6.3            | 6.6        | 6.2        | 5.5       | 7.8       | 7.1        | 4.4        | 4.3       | 6.3         |
| 2008-09   | 7.5            | 8.0        | 7.3        | 5.9       | 9.2       | 8.3        | 5.1        | 3.9       | 7.5         |
| 2009-10   | 8.2            | 8.3        | 7.8        | 6.3       | 10.0      | 8.6        | 5.7        | 3.9       | 8.0         |

(a) Service user data are estimates after a statistical linkage key is used to account for individuals who received services from more than one service type outlet during each period. Individuals might have accessed services from more than one State or Territory.

**Table 14A.50 Users of NDA employment services (aged 15-64 years), by Indigenous status (a), (b), (c), (d), (e), (f), (g)**

|     | NSW (h)   | Vic | Qld | WA | SA | Tas | ACT | NT | Aust |
|-----|---|-----|-----|----|----|-----|-----|----|------|
| (b) | Changes to linking procedures implemented for 2007-08 and 2008-09 data may have the effect of slightly increasing the number of unique service users within the CSTDA NMDS for these years.   |     |     |    |    |     |     |    |      |
| (c) | Data for users per 1000 people are derived by dividing the number of service users by the number of people aged 15–64 years, multiplied by 1000. Data for users per 1000 potential population (unrevised method) are derived by dividing the number of service users by the potential population (unrevised method), multiplied by 1000. The potential populations for 2006-07 have been revised, therefore data for service users per 1000 potential population (unrevised method) can differ from those in the 2009 Report. |     |     |    |    |     |     |    |      |
| (d) | Data for all service users exclude 4498 service users in 2003-04, 2665 service users in 2004-05, 1288 service users in 2005-06, 91 service users in 2006-07, 126 service users in 2007-08 and 267 service users in 2008-09 whose Indigenous status was not reported, thus employment service users per 1000 total population aged 15–64 years may differ from other tables. Due to the relatively high missing rate of data, care should be taken when interpreting this indicator.   |     |     |    |    |     |     |    |      |
| (e) | Comparisons of the Indigenous and non-Indigenous populations' access to services per 1000 people should be undertaken with care. The need for services is likely to be greater for Indigenous people than non-Indigenous people due to the higher prevalence of disability. The AIHW estimated that the proportion of Indigenous people aged over 18 years who had a profound or severe core activity limitation is approximately 2.4 times that of non-Indigenous people.  |     |     |    |    |     |     |    |      |
| (f) | From 1 October 2008, targeted support services previously delivered by the Australian Government and included in 'employment services' were transferred to other service groups delivered by State and Territory governments.   |     |     |    |    |     |     |    |      |
| (g) | Potential population is calculated using the unrevised method. Potential population has been recalculated based on updated data available from the 2009 SDAC. The potential population has been backcast to the 2008-09 year. Data previously published in the 2011 Report have been updated in this Report. See section 14.7 for information on how the potential population is defined.   |     |     |    |    |     |     |    |      |
| (h) | NSW has experienced low and varied data response rates. This led to underreporting of service user numbers for all years and affected the comparability of the data across the years and with other jurisdictions.  |     |     |    |    |     |     |    |      |

**Source:** AIHW (unpublished) (2011) Disability Support Services 2008-09: Report on services provided under the CSTDA and the NDA, Cat. no. DIS 58; AIHW 2007-08: National Data on Services Provided under the CSTDA Cat. no. DIS 56 ; AIHW analysis of the ABS Indigenous Projected Population 2009; ABS 2009 Survey of Disability, Ageing and Carers; AIHW (unpublished), derived from ABS 2004, *Experimental Projections of the Aboriginal and Torres Strait Islander Population 30 June 2001 to 30 June 2009*, Cat. no. 3238.0, ABS 2004, *2003 Survey of Disability, Ageing and Carers*, Cat. no. 4430.0, ABS 2005 (and previous years), *Australian Demographic Statistics June 2003, 2004, 2005, 2006, 2007, 2008*, Cat. no. 3101.0, ABS 2006 *Census of Population and Housing (CDATA Online)*, *Labour Force Australia, Detailed Electronic Delivery, June 2006, 2007, 2008*, Cat. no. 6291.0.55.001, ABS 2007, *Population by Age and Sex, Australian States and Territories, Jun 2006, 2007, 2008*, Cat. no. 3201.0, ABS 2009, *Experimental Estimates and Projections, Aboriginal and Torres Strait Islander Australians, 1991 to 2021*, Cat. no. 3238.0.

Table 14A.51

Table 14A.51 **Users of NDA open employment services (aged 15-64 years), by Indigenous status (a), (b), (c), (d)**

|  |            | <i>NSW</i>   | <i>Vic</i>   | <i>Qld</i>   | <i>WA</i>    | <i>SA</i>    | <i>Tas</i>  | <i>ACT</i> | <i>NT</i>    | <i>Aust</i>   |
|--|------------|--------------|--------------|--------------|--------------|--------------|-------------|------------|--------------|---------------|
| 2007-08  |            |              |              |              |              |              |             |            |              |               |
| Number of Indigenous users of open employment services                               |            |              |              |              |              |              |             |            |              |               |
| 15-24 years  | no.        | np           | np           | np           | np           | np           | np          | np         | np           | 1 014         |
| 25-34 years  | no.        | np           | np           | np           | np           | np           | np          | np         | np           | 539           |
| 35-44 years  | no.        | np           | np           | np           | np           | np           | np          | np         | np           | 574           |
| 45-54 years  | no.        | np           | np           | np           | np           | np           | np          | np         | np           | 452           |
| 55-64 years  | no.        | np           | np           | np           | np           | np           | np          | np         | np           | 176           |
| 15-49 years  | no.        | np           | np           | np           | np           | np           | np          | np         | np           | 2 378         |
| <b>Total</b>   | <b>no.</b> | <b>999</b>   | <b>269</b>   | <b>820</b>   | <b>310</b>   | <b>141</b>   | <b>108</b>  | <b>20</b>  | <b>105</b>   | <b>2 755</b>  |
| Estimated Indigenous potential population for disability employment services (e)     |            |              |              |              |              |              |             |            |              |               |
| 15-24 years  | no.        | np           | np           | np           | np           | np           | np          | np         | np           | 3 849         |
| 25-34 years  | no.        | np           | np           | np           | np           | np           | np          | np         | np           | 3 396         |
| 35-44 years  | no.        | np           | np           | np           | np           | np           | np          | np         | np           | 5 474         |
| 45-54 years  | no.        | np           | np           | np           | np           | np           | np          | np         | np           | 6 286         |
| 55-64 years  | no.        | np           | np           | np           | np           | np           | np          | np         | np           | 5 607         |
| 15-49 years  | no.        | np           | np           | np           | np           | np           | np          | np         | np           | 15 818        |
| <b>Total</b>   | <b>no.</b> | <b>8 444</b> | <b>2 011</b> | <b>5 762</b> | <b>3 457</b> | <b>1 328</b> | <b>832</b>  | <b>243</b> | <b>2 537</b> | <b>24 612</b> |
| Proportion of the Indigenous potential population accessing open employment services |            |              |              |              |              |              |             |            |              |               |
| 15-24 years  | %          | 29.3         | 27.3         | 28.0         | 23.7         | 28.3         | 33.1        | 18.7       | 10.2         | 26.3          |
| 25-34 years  | %          | 15.7         | 15.3         | 19.9         | 17.1         | 13.3         | 21.1        | n.p.       | 7.9          | 15.9          |
| 35-44 years  | %          | 10.6         | 13.7         | 14.6         | 7.8          | 10.2         | 10.3        | 9.6        | 3.6          | 10.5          |
| 45-54 years  | %          | 7.1          | 10.7         | 10.4         | 5.4          | 5.6          | 6.4         | np         | 2.3          | 7.2           |
| 55-64 years  | %          | 3.0          | 3.9          | 4.8          | 2.3          | 3.7          | np          | np         | 1.0          | 3.1           |
| 15-49 years  | %          | 15.7         | 17.3         | 18.8         | 12.6         | 14.6         | 17.8        | 11.5       | 5.9          | 15.0          |
| <b>Total</b>   | <b>%</b>   | <b>11.8</b>  | <b>13.4</b>  | <b>14.2</b>  | <b>9.0</b>   | <b>10.6</b>  | <b>13.0</b> | <b>8.2</b> | <b>4.1</b>   | <b>11.2</b>   |
| 2008-09  |            |              |              |              |              |              |             |            |              |               |
| Number of Indigenous users of open employment services                               |            |              |              |              |              |              |             |            |              |               |
| 15-24 years  | no.        | np           | np           | np           | np           | np           | np          | np         | np           | 1 161         |
| 25-34 years  | no.        | np           | np           | np           | np           | np           | np          | np         | np           | 676           |
| 35-44 years  | no.        | np           | np           | np           | np           | np           | np          | np         | np           | 666           |
| 45-54 years  | no.        | np           | np           | np           | np           | np           | np          | np         | np           | 574           |
| 55-64 years  | no.        | np           | np           | np           | np           | np           | np          | np         | np           | 208           |
| 15-49 years  | no.        | np           | np           | np           | np           | np           | np          | np         | np           | 2 825         |
| <b>Total</b>   | <b>no.</b> | <b>1 226</b> | <b>328</b>   | <b>945</b>   | <b>332</b>   | <b>196</b>   | <b>115</b>  | <b>17</b>  | <b>126</b>   | <b>3 285</b>  |
| Estimated Indigenous potential population for disability employment services (f) (g) |            |              |              |              |              |              |             |            |              |               |
| 15-24 years  | no.        | np           | np           | np           | np           | np           | np          | np         | np           | 3 350         |
| 25-34 years  | no.        | np           | np           | np           | np           | np           | np          | np         | np           | 2 962         |
| 35-44 years  | no.        | np           | np           | np           | np           | np           | np          | np         | np           | 4 694         |
| 45-54 years  | no.        | np           | np           | np           | np           | np           | np          | np         | np           | 5 666         |
| 55-64 years  | no.        | np           | np           | np           | np           | np           | np          | np         | np           | 5 739         |

**Table 14A.51 Users of NDA open employment services (aged 15-64 years), by Indigenous status (a), (b), (c), (d)**

|  |            | <i>NSW</i>   | <i>Vic</i>   | <i>Qld</i>   | <i>WA</i>    | <i>SA</i>    | <i>Tas</i>  | <i>ACT</i>  | <i>NT</i>    | <i>Aust</i>   |
|--|------------|--------------|--------------|--------------|--------------|--------------|-------------|-------------|--------------|---------------|
| 15-49 years  | no.        | np           | np           | np           | np           | np           | np          | np          | np           | 13 947        |
| <b>Total</b>   | <b>no.</b> | <b>7 666</b> | <b>1 824</b> | <b>5 277</b> | <b>3 152</b> | <b>1 209</b> | <b>760</b>  | <b>223</b>  | <b>2 301</b> | <b>22 412</b> |
| Proportion of the Indigenous potential population accessing open employment services |            |              |              |              |              |              |             |             |              |               |
| 15-24 years  | %          | 38.9         | 35.5         | 36.8         | 26.2         | 47.5         | 43.3        | 11.7        | 11.2         | 34.7          |
| 25-34 years  | %          | 24.8         | 25.9         | 25.6         | 22.6         | 29.2         | 24.6        | np          | 5.8          | 22.8          |
| 35-44 years  | %          | 14.6         | 19.9         | 19.9         | 9.2          | 12.8         | 7.8         | np          | 6.8          | 14.2          |
| 45-54 years  | %          | 10.4         | 13.6         | 13.3         | 7.3          | 7.5          | 8.1         | 9.8         | 5.8          | 10.1          |
| 55-64 years  | %          | 3.5          | 4.1          | 5.5          | 2.7          | 3.8          | 2.6         | np          | 1.3          | 3.6           |
| 15-49 years  | %          | 21.8         | 23.9         | 24.8         | 15.0         | 24.2         | 20.9        | 8.4         | 7.1          | 20.3          |
| <b>Total</b>   | <b>%</b>   | <b>16.0</b>  | <b>18.0</b>  | <b>17.9</b>  | <b>10.5</b>  | <b>16.2</b>  | <b>15.1</b> | <b>7.6</b>  | <b>5.5</b>   | <b>14.7</b>   |
| 2009-10  |            |              |              |              |              |              |             |             |              |               |
| Number of Indigenous users of open employment services                               |            |              |              |              |              |              |             |             |              |               |
| 15-24 years  | no.        | np           | np           | np           | np           | np           | np          | np          | np           | 1 450         |
| 25-34 years  | no.        | np           | np           | np           | np           | np           | np          | np          | np           | 857           |
| 35-44 years  | no.        | np           | np           | np           | np           | np           | np          | np          | np           | 896           |
| 45-54 years  | no.        | np           | np           | np           | np           | np           | np          | np          | np           | 696           |
| 55-64 years  | no.        | np           | np           | np           | np           | np           | np          | np          | np           | 322           |
| 15-49 years  | no.        | np           | np           | np           | np           | np           | np          | np          | np           | 3 591         |
| <b>Total</b>   | <b>no.</b> | <b>1 585</b> | <b>393</b>   | <b>1 267</b> | <b>404</b>   | <b>244</b>   | <b>156</b>  | <b>30</b>   | <b>152</b>   | <b>4 221</b>  |
| Estimated Indigenous potential population for disability employment services (h)     |            |              |              |              |              |              |             |             |              |               |
| 15-24 years  | no.        | np           | np           | np           | np           | np           | np          | np          | np           | 3 471         |
| 25-34 years  | no.        | np           | np           | np           | np           | np           | np          | np          | np           | 3 029         |
| 35-44 years  | no.        | np           | np           | np           | np           | np           | np          | np          | np           | 4 743         |
| 45-54 years  | no.        | np           | np           | np           | np           | np           | np          | np          | np           | 5 885         |
| 55-64 years  | no.        | np           | np           | np           | np           | np           | np          | np          | np           | 6 081         |
| 15-49 years  | no.        | np           | np           | np           | np           | np           | np          | np          | np           | 14 283        |
| <b>Total</b>   | <b>no.</b> | <b>7 904</b> | <b>1 889</b> | <b>5 496</b> | <b>3 268</b> | <b>1 251</b> | <b>788</b>  | <b>233</b>  | <b>2 379</b> | <b>23 209</b> |
| Proportion of the Indigenous potential population accessing open employment services |            |              |              |              |              |              |             |             |              |               |
| 15-24 years  | %          | 49.1         | 36.6         | 45.5         | 29.5         | 54.7         | 50.3        | 22.6        | 12.1         | 41.8          |
| 25-34 years  | %          | 28.3         | 31.9         | 36.1         | 22.6         | 34.0         | 39.7        | 28.1        | 9.8          | 28.3          |
| 35-44 years  | %          | 19.3         | 25.1         | 25.8         | 13.7         | 15.5         | 15.0        | 11.3        | 9.1          | 18.9          |
| 45-54 years  | %          | 12.7         | 13.7         | 15.9         | 9.0          | 11.6         | 9.2         | 12.6        | 4.4          | 11.8          |
| 55-64 years  | %          | 5.4          | 7.4          | 8.1          | 2.9          | 4.5          | 2.5         | np          | 2.2          | 5.3           |
| 15-49 years  | %          | 27.5         | 26.9         | 31.7         | 17.6         | 28.2         | 27.7        | 16.9        | 9.0          | 25.1          |
| <b>Total</b>   | <b>%</b>   | <b>20.1</b>  | <b>20.8</b>  | <b>23.1</b>  | <b>12.4</b>  | <b>19.5</b>  | <b>19.8</b> | <b>12.9</b> | <b>6.4</b>   | <b>18.2</b>   |

(a) Open employment services are delivered by the Australian Government.

(b) Potential population is calculated using the revised method. See section 14.7 for information on how the potential population is defined.

(c) Changes in the linking procedures implemented for 2007-08 and 2008-09 data may have the effect of slightly increasing the number of unique service users within the CSTDA NMDS for these years.

**Table 14A.51 Users of NDA open employment services (aged 15-64 years), by Indigenous status (a), (b), (c), (d)**

|  | <i>NSW</i> | <i>Vic</i> | <i>Qld</i> | <i>WA</i> | <i>SA</i> | <i>Tas</i> | <i>ACT</i> | <i>NT</i> | <i>Aust</i> |
|--|------------|------------|------------|-----------|-----------|------------|------------|-----------|-------------|
|--|------------|------------|------------|-----------|-----------|------------|------------|-----------|-------------|

(d) Total service users for Australia may not be the sum of components because individuals may have accessed services in more than one State or Territory during the 12 month period.

(e) at 30 June 2007.

(f) at 30 June 2008.

(g) Potential population has been recalculated based on updated data available from the 2009 SDAC. The potential population has been backcast to the 2008-09 year. Data previously published in the 2011 Report have been updated in this Report.

(h) at 30 June 2009.

**np** Not published.

*Source:* AIHW (unpublished) (2011) Disability Support Services 2008-09: Report on services provided under the Commonwealth State/Territory Disability Agreement and the National Disability Agreement, Cat. no. DIS 58; AIHW 2007-08: National Data on Services Provided under the CSTDA Cat. no. DIS 56 ; AIHW analysis of the ABS Indigenous Projected Population 2009; ABS 2009 Survey of Disability, Ageing and Carers; ABS *Indigenous Projected Population 2007 and 2008* (ABS cat. no. 3238.0, 2009); *2003 Survey of Disability, Ageing and Carers*; DS NMDS 2009-10; AIHW analysis of the ABS *Indigenous Projected Population 2009*; 2009 Survey of Disability, Ageing and Carers; *2006 Census of Population and Housing*.



Table 14A.52

**Table 14A.52 Users of NDA supported employment services (aged 15-64 years), by Indigenous status (a), (b), (c), (d)**

|   |            | <i>NSW</i>   | <i>Vic</i>   | <i>Qld</i>   | <i>WA</i>    | <i>SA</i>    | <i>Tas</i> | <i>ACT</i> | <i>NT</i>    | <i>Aust</i>   |
|---|------------|--------------|--------------|--------------|--------------|--------------|------------|------------|--------------|---------------|
| 2007-08   |            |              |              |              |              |              |            |            |              |               |
| Number of Indigenous users of supported employment services                               |            |              |              |              |              |              |            |            |              |               |
| 15-24 years   | no.        | np           | np           | np           | np           | np           | np         | np         | np           | 150           |
| 25-34 years   | no.        | np           | np           | np           | np           | np           | np         | np         | np           | 146           |
| 35-44 years   | no.        | np           | np           | np           | np           | np           | np         | np         | np           | 165           |
| 45-54 years   | no.        | np           | np           | np           | np           | np           | np         | np         | np           | 104           |
| 55-64 years   | no.        | np           | np           | np           | np           | np           | np         | np         | np           | 35            |
| 15-49 years   | no.        | np           | np           | np           | np           | np           | np         | np         | np           | 524           |
| <b>Total</b>  | <b>no.</b> | <b>235</b>   | <b>80</b>    | <b>90</b>    | <b>85</b>    | <b>47</b>    | <b>18</b>  | <b>np</b>  | <b>43</b>    | <b>600</b>    |
| Estimated Indigenous potential population for disability employment services (e)          |            |              |              |              |              |              |            |            |              |               |
| 15-24 years   | no.        | np           | np           | np           | np           | np           | np         | np         | np           | 3 849         |
| 25-34 years   | no.        | np           | np           | np           | np           | np           | np         | np         | np           | 3 396         |
| 35-44 years   | no.        | np           | np           | np           | np           | np           | np         | np         | np           | 5 474         |
| 45-54 years   | no.        | np           | np           | np           | np           | np           | np         | np         | np           | 6 286         |
| 55-64 years   | no.        | np           | np           | np           | np           | np           | np         | np         | np           | 5 607         |
| 15-49 years   | no.        | np           | np           | np           | np           | np           | np         | np         | np           | 15 818        |
| <b>Total</b>  | <b>no.</b> | <b>8 444</b> | <b>2 011</b> | <b>5 762</b> | <b>3 457</b> | <b>1 328</b> | <b>832</b> | <b>243</b> | <b>2 537</b> | <b>24 612</b> |
| Proportion of the Indigenous potential population accessing supported employment services |            |              |              |              |              |              |            |            |              |               |
| 15-24 years   | %          | 3.5          | 5.2          | 3.4          | 4.3          | 4.6          | 5.0        | np         | 4.3          | 3.9           |
| 25-34 years   | %          | 4.7          | 8.6          | 1.7          | 5.0          | 7.4          | np         | np         | 3.6          | 4.3           |
| 35-44 years   | %          | 3.7          | 5.3          | 2.0          | 2.5          | 4.0          | np         | np         | 2.1          | 3.0           |
| 45-54 years   | %          | 1.8          | 2.3          | 1.1          | 1.9          | 3.2          | np         | np         | n.p.         | 1.7           |
| 55-64 years   | %          | 1.2          | np           | np           | 0.8          | np           | np         | np         | n.p.         | 0.6           |
| 15-49 years   | %          | 3.4          | 5.7          | 2.3          | 3.3          | 5.2          | 2.8        | np         | 2.7          | 3.3           |
| <b>Total</b>  | <b>%</b>   | <b>2.8</b>   | <b>4.0</b>   | <b>1.6</b>   | <b>2.5</b>   | <b>3.5</b>   | <b>2.2</b> | <b>np</b>  | <b>1.7</b>   | <b>2.4</b>    |
| 2008-09   |            |              |              |              |              |              |            |            |              |               |
| Number of Indigenous users of supported employment services                               |            |              |              |              |              |              |            |            |              |               |
| 15-24 years   | no.        | np           | np           | np           | np           | np           | np         | np         | np           | 178           |
| 25-34 years   | no.        | np           | np           | np           | np           | np           | np         | np         | np           | 153           |
| 35-44 years   | no.        | np           | np           | np           | np           | np           | np         | np         | np           | 162           |
| 45-54 years   | no.        | np           | np           | np           | np           | np           | np         | np         | np           | 121           |
| 55-64 years   | no.        | np           | np           | np           | np           | np           | np         | np         | np           | 44            |
| 15-49 years   | no.        | np           | np           | np           | np           | np           | np         | np         | np           | 551           |
| <b>Total</b>  | <b>no.</b> | <b>257</b>   | <b>97</b>    | <b>83</b>    | <b>98</b>    | <b>54</b>    | <b>20</b>  | <b>np</b>  | <b>47</b>    | <b>658</b>    |
| Estimated Indigenous potential population for disability employment services (f) (g)      |            |              |              |              |              |              |            |            |              |               |
| 15-24 years   | no.        | np           | np           | np           | np           | np           | np         | np         | np           | 3 350         |
| 25-34 years   | no.        | np           | np           | np           | np           | np           | np         | np         | np           | 2 962         |
| 35-44 years   | no.        | np           | np           | np           | np           | np           | np         | np         | np           | 4 694         |
| 45-54 years   | no.        | np           | np           | np           | np           | np           | np         | np         | np           | 5 666         |
| 55-64 years   | no.        | np           | np           | np           | np           | np           | np         | np         | np           | 5 739         |

Table 14A.52

**Table 14A.52 Users of NDA supported employment services (aged 15-64 years), by Indigenous status (a), (b), (c), (d)**

|   |            | <i>NSW</i>   | <i>Vic</i>   | <i>Qld</i>   | <i>WA</i>    | <i>SA</i>    | <i>Tas</i> | <i>ACT</i> | <i>NT</i>    | <i>Aust</i>   |
|---|------------|--------------|--------------|--------------|--------------|--------------|------------|------------|--------------|---------------|
| 15-49 years   | no.        | np           | np           | np           | np           | np           | np         | np         | np           | 13 947        |
| <b>Total</b>  | <b>no.</b> | <b>7 666</b> | <b>1 824</b> | <b>5 277</b> | <b>3 152</b> | <b>1 209</b> | <b>760</b> | <b>223</b> | <b>2 301</b> | <b>22 412</b> |
| Proportion of the Indigenous potential population accessing supported employment services |            |              |              |              |              |              |            |            |              |               |
| 15-24 years   | %          | 4.8          | 8.1          | 3.2          | 7.1          | 9.5          | 5.8        | np         | 6.2          | 5.3           |
| 25-34 years   | %          | 6.0          | 9.5          | 2.2          | 6.3          | 7.3          | np         | np         | 4.1          | 5.2           |
| 35-44 years   | %          | 4.3          | 5.3          | 2.0          | 2.3          | 6.2          | 3.6        | np         | 2.2          | 3.5           |
| 45-54 years   | %          | 2.0          | 5.1          | 1.4          | 2.8          | 2.9          | np         | np         | 0.8          | 2.1           |
| 55-64 years   | %          | 1.5          | np           | np           | 0.9          | np           | np         | np         | np           | 0.8           |
| 15-49 years   | %          | 4.2          | 7.0          | 2.3          | 4.1          | 6.8          | 3.4        | np         | 3.1          | 4.0           |
| <b>Total</b>  | <b>%</b>   | <b>3.4</b>   | <b>5.3</b>   | <b>1.6</b>   | <b>3.1</b>   | <b>4.5</b>   | <b>2.6</b> | <b>np</b>  | <b>2.0</b>   | <b>2.9</b>    |
| 2009-10   |            |              |              |              |              |              |            |            |              |               |
| Number of Indigenous users of supported employment services                               |            |              |              |              |              |              |            |            |              |               |
| 15-24 years   | no.        | np           | np           | np           | np           | np           | np         | np         | np           | 170           |
| 25-34 years   | no.        | np           | np           | np           | np           | np           | np         | np         | np           | 166           |
| 35-44 years   | no.        | np           | np           | np           | np           | np           | np         | np         | np           | 180           |
| 45-54 years   | no.        | np           | np           | np           | np           | np           | np         | np         | np           | 129           |
| 55-64 years   | no.        | np           | np           | np           | np           | np           | np         | np         | np           | 56            |
| 15-49 years   | no.        | np           | np           | np           | np           | np           | np         | np         | np           | 581           |
| <b>Total</b>  | <b>no.</b> | <b>297</b>   | <b>89</b>    | <b>81</b>    | <b>134</b>   | <b>43</b>    | <b>22</b>  | <b>np</b>  | <b>31</b>    | <b>701</b>    |
| Estimated Indigenous potential population for disability employment services (h)          |            |              |              |              |              |              |            |            |              |               |
| 15-24 years   | no.        | np           | np           | np           | np           | np           | np         | np         | np           | 3 471         |
| 25-34 years   | no.        | np           | np           | np           | np           | np           | np         | np         | np           | 3 029         |
| 35-44 years   | no.        | np           | np           | np           | np           | np           | np         | np         | np           | 4 743         |
| 45-54 years   | no.        | np           | np           | np           | np           | np           | np         | np         | np           | 5 885         |
| 55-64 years   | no.        | np           | np           | np           | np           | np           | np         | np         | np           | 6 081         |
| 15-49 years   | no.        | np           | np           | np           | np           | np           | np         | np         | np           | 14 283        |
| <b>Total</b>  | <b>no.</b> | <b>7 904</b> | <b>1 889</b> | <b>5 496</b> | <b>3 268</b> | <b>1 251</b> | <b>788</b> | <b>233</b> | <b>2 379</b> | <b>23 209</b> |
| Proportion of the Indigenous potential population accessing supported employment services |            |              |              |              |              |              |            |            |              |               |
| 15-24 years   | %          | 4.6          | 4.4          | 2.5          | 10.3         | 7.0          | 7.0        | np         | 4.6          | 4.9           |
| 25-34 years   | %          | 7.5          | 9.0          | 2.7          | 6.9          | 5.3          | 5.1        | np         | 1.7          | 5.5           |
| 35-44 years   | %          | 4.9          | 6.9          | 2.1          | 3.8          | 4.6          | np         | np         | 1.5          | 3.8           |
| 45-54 years   | %          | 2.4          | 4.1          | 1.1          | 3.4          | 2.8          | np         | np         | np           | 2.2           |
| 55-64 years   | %          | 1.8          | 1.1          | np           | 1.2          | np           | np         | np         | np           | 0.9           |
| 15-49 years   | %          | 4.7          | 6.0          | 2.2          | 5.7          | 5.0          | 3.9        | np         | 2.1          | 4.1           |
| <b>Total</b>  | <b>%</b>   | <b>3.8</b>   | <b>4.7</b>   | <b>1.5</b>   | <b>4.1</b>   | <b>3.4</b>   | <b>2.8</b> | <b>np</b>  | <b>1.3</b>   | <b>3.0</b>    |

(a) Supported employment services are delivered by the Australian Government.

(b) Potential population is calculated using the revised method. See section 14.7 for information on how the potential population is defined.

(c) Changes in the linking procedures implemented for 2007-08 and 2008-09 data may have the effect of slightly increasing the number of unique service users within the CSTDA NMDS for these years.

**Table 14A.52 Users of NDA supported employment services (aged 15-64 years), by Indigenous status (a), (b), (c), (d)**

|  | <i>NSW</i> | <i>Vic</i> | <i>Qld</i> | <i>WA</i> | <i>SA</i> | <i>Tas</i> | <i>ACT</i> | <i>NT</i> | <i>Aust</i> |
|--|------------|------------|------------|-----------|-----------|------------|------------|-----------|-------------|
|--|------------|------------|------------|-----------|-----------|------------|------------|-----------|-------------|

(d) Total service users for Australia may not be the sum of components because individuals may have accessed services in more than one State or Territory during the 12 month period.

(e) at 30 June 2007.

(f) at 30 June 2008.

(g) Potential population (revised method) has been recalculated based on updated data available from the 2009 SDAC. The potential population has been backcast to the 2008-09 year. Data previously published in the 2011 Report have been updated in this Report.

(h) at 30 June 2009.

**np** Not published.

*Source:* AIHW (unpublished) (2011) Disability Support Services 2009-10: Report on services provided under the Commonwealth State/Territory Disability Agreement and the National Disability Agreement, Cat. no. DIS 58; AIHW 2007-08 and 2008-09: National Data on Services Provided under the CSTDA Cat. no. DIS 56 ; AIHW analysis of the ABS Indigenous Projected Population 2009; ABS 2009 Survey of Disability, Ageing and Carers; AIHW (unpublished) CSTDA NMDS 2008-09, 2007-08; ABS *Indigenous Projected Population 2007 and 2008* (ABS cat. no. 3238.0, 2009); *2003 Survey of Disability, Ageing and Carers*.

Table 14A.94

Table 14A.94 Labour force participation and employment of all people with disability, by special needs groups, 2009 (per cent) (a), (b), (c), (d), (e)

|   | NSW         | Vic         | Qld          | WA          | SA           | Tas         | ACT         | NT          | Aust        |
|---|-------------|-------------|--------------|-------------|--------------|-------------|-------------|-------------|-------------|
| Labour force participation rate                 |             |             |              |             |              |             |             |             |             |
| People in major cities and inner regional areas | 50.4 ± 4.7  | 54.9 ± 3.8  | 55.8 ± 5.1   | 60.0 ± 6.2  | 57.5 ± 6.0   | 50.1 ± 4.6  | 66.3 ± 5.3  | –           | 54.3 ± 1.9  |
| People in outer regional and remote areas       | 43.3 ± 15.9 | 48.6 ± 27.6 | 59.3 ± 11.9  | 54.1 ± 9.7  | 47.1 ± 9.6   | 36.0 ± 8.7  | –           | 67.7 ± 7.0  | 52.1 ± 5.8  |
| People born in an English speaking country      | 53.3 ± 4.9  | 58.5 ± 4.8  | 57.2 ± 5.0   | 61.5 ± 5.1  | 58.4 ± 5.6   | 45.3 ± 4.8  | 65.7 ± 5.9  | 67.8 ± 7.6  | 56.7 ± 2.0  |
| People born in a non-English speaking country   | 35.5 ± 11.5 | 40.2 ± 9.2  | 44.6 ± 17.5  | 43.0 ± 13.2 | 35.6 ± 12.9  | 41.3 ± 17.2 | 70.4 ± 14.1 | 67.1 ± 18.7 | 39.2 ± 5.8  |
| Non-Indigenous people                           | 50.8 ± 4.4  | 54.7 ± 4.0  | 56.6 ± 4.6   | 59.6 ± 5.6  | 56.5 ± 5.7   | 44.7 ± 4.6  | 67.1 ± 5.4  | 73.7 ± 7.1  | 54.5 ± 1.8  |
| Indigenous people                               | 33.8 ± 23.6 | 46.4 ± 36.4 | 52.8 ± 38.6  | 35.8 ± 26.0 | 33.5 ± 27.4  | 54.3 ± 22.8 | 36.7 ± 29.2 | 33.4 ± 15.2 | 38.8 ± 13.7 |
| Employment rate                                 |             |             |              |             |              |             |             |             |             |
| People in major cities and inner regional areas | 87.9 ± 3.5  | 91.4 ± 3.1  | 88.5 ± 4.5   | 89.8 ± 4.6  | 92.6 ± 4.3   | 93.1 ± 4.2  | 93.8 ± 3.2  | –           | 89.7 ± 1.4  |
| People in outer regional and remote areas       | 94.0 ± 12.5 | 86.1 ± 28.6 | 88.9 ± 9.4   | 89.6 ± 9.1  | 86.1 ± 14.5  | 90.9 ± 6.5  | –           | 95.2 ± 3.6  | 89.9 ± 4.9  |
| People born in an English speaking country      | 87.3 ± 3.8  | 91.5 ± 3.7  | 89.2 ± 3.7   | 89.9 ± 4.0  | 91.6 ± 4.1   | 92.6 ± 3.5  | 94.2 ± 3.5  | 94.5 ± 4.1  | 89.7 ± 1.5  |
| People born in a non-English speaking country   | 94.2 ± 8.2  | 88.8 ± 12.6 | 75.9 ± 26.5  | 88.7 ± 12.6 | 94.4 ± 11.3  | 88.9 ± 22.5 | 91.6 ± 9.5  | 100.0 ± 0.0 | 90.1 ± 5.8  |
| Non-Indigenous people                           | 88.9 ± 3.6  | 91.0 ± 3.3  | 88.8 ± 3.8   | 89.9 ± 4.0  | 92.1 ± 4.2   | 92.5 ± 3.7  | 93.7 ± 3.3  | 95.4 ± 3.8  | 90.0 ± 1.5  |
| Indigenous people                               | 68.7 ± 31.6 | 100.0 ± 0.0 | *79.6 ± 43.1 | 82.0 ± 39.9 | *71.1 ± 64.0 | 91.9 ± 16.8 | 100.0 ± 0.0 | 92.3 ± 16.1 | 77.9 ± 17.3 |

(a) For people aged 15–64 years.

(b) Disability includes Profound core activity limitation, Severe Core Activity Limitation, Moderate Core Activity Limitation, Mild core activity limitation, Education/employment restriction only

**Table 14A.94 Labour force participation and employment of all people with disability, by special needs groups, 2009 (per cent) (a), (b), (c), (d), (e)**

|  | NSW | Vic | Qld | WA | SA | Tas | ACT | NT | Aust |
|--|-----|-----|-----|----|----|-----|-----|----|------|
|--|-----|-----|-----|----|----|-----|-----|----|------|

(c) A <sup>†††</sup> indicates a RSEs of between 25 per cent and 50 per cent. Data with RSEs over 50 per cent are not published (np).

(d) The labour force participation and employment rates reported in this table include 95 per cent confidence intervals (for example, X per cent  $\pm$  X per cent).

(e) Due to differences in collection methodology, the data collected by the ABS Disability Module (used in the Survey of Education and Training Experience) relate to a broader 'disability and long-term health condition' population than the 'disability' population obtained from the much more detailed Survey of Disability, Ageing and Carers — however, the characteristics of the populations are similar. The data are suitable for population comparisons, but not for prevalence updates between Disability, Ageing and Carers surveys.

– Nil or rounded to zero.

Source: ABS *Survey of Education and Training Experience, Australia* (unpublished).

Table 14A.95

Table 14A.95 Labour force participation and employment of people with a profound or severe core activity limitation, by special needs groups, 2009 (per cent) (a), (b), (c), (d)

|   | NSW         | Vic         | Q/d         | WA          | SA          | Tas         | ACT         | NT          | Aust        |
|---|-------------|-------------|-------------|-------------|-------------|-------------|-------------|-------------|-------------|
| Labour force participation rate                 |             |             |             |             |             |             |             |             |             |
| People in major cities and inner regional areas | 30.6 ± 9.1  | 30.8 ± 7.6  | 43.4 ± 10.0 | 38.8 ± 11.4 | 36.0 ± 12.1 | 30.7 ± 8.2  | 42.3 ± 10.4 | –           | 34.4 ± 4.3  |
| People in outer regional and remote areas       | 23.2 ± 21.4 | 22.6 ± 48.7 | 45.6 ± 20.8 | 31.5 ± 25.4 | 41.9 ± 23.3 | 19.6 ± 11.0 | –           | 47.5 ± 16.0 | 36.3 ± 10.2 |
| People born in an English speaking country      | 32.1 ± 8.8  | 35.3 ± 10.0 | 44.6 ± 9.4  | 38.8 ± 10.6 | 40.4 ± 10.5 | 26.0 ± 6.7  | 42.7 ± 11.1 | 49.8 ± 18.6 | 37.3 ± 4.3  |
| People born in a non-English speaking country   | 22.9 ± 23.4 | 19.9 ± 13.2 | 24.8 ± 56.6 | 32.1 ± 25.3 | 9.7 ± 20.5  | 51.4 ± 62.9 | 39.4 ± 29.4 | 24.4 ± 55.0 | 22.2 ± 11.0 |
| Non-Indigenous people                           | 30.3 ± 8.8  | 30.6 ± 7.6  | 44.2 ± 9.8  | 37.7 ± 9.4  | 37.9 ± 11.4 | 25.3 ± 6.9  | 43.3 ± 10.5 | 53.8 ± 16.6 | 34.8 ± 4.1  |
| Indigenous people                               | 28.2 ± 34.4 | –           | 32.2 ± 77.5 | –           | –           | 66.6 ± 45.7 | –           | 15.8 ± 34.9 | 28.2 ± 23.6 |
| Employment rate                                 |             |             |             |             |             |             |             |             |             |
| People in major cities and inner regional areas | 88.5 ± 10.1 | 82.8 ± 12.7 | 89.2 ± 10.0 | 95.0 ± 6.8  | 91.8 ± 11.0 | 93.9 ± 8.2  | 97.5 ± 5.1  | –           | 88.3 ± 5.0  |
| People in outer regional and remote areas       | 100.0 ± 0.0 | 100.0 ± 0.0 | 83.8 ± 20.9 | 100.0 ± 0.0 | 85.6 ± 30.9 | 82.2 ± 24.3 | –           | 91.0 ± 12.4 | 88.2 ± 11.3 |
| People born in an English speaking country      | 86.9 ± 11.3 | 86.5 ± 12.7 | 89.7 ± 8.2  | 94.9 ± 6.8  | 90.5 ± 10.5 | 90.3 ± 9.2  | 97.1 ± 5.8  | 90.5 ± 13.0 | 89.0 ± 4.6  |
| People born in a non-English speaking country   | 100.0 ± 0.0 | 70.0 ± 40.6 | –           | 100.0 ± 0.0 | 100.0 ± 0.0 | 100.0 ± 0.0 | 100.0 ± 0.0 | 100.0 ± 0.0 | 83.0 ± 21.2 |
| Non-Indigenous people                           | 88.4 ± 10.1 | 83.2 ± 12.5 | 87.6 ± 10.3 | 95.6 ± 5.9  | 90.8 ± 10.2 | 92.6 ± 8.1  | 97.5 ± 5.1  | 90.4 ± 13.1 | 88.1 ± 4.7  |
| Indigenous people                               | 100.0 ± 0.0 | –           | 100.0 ± 0.0 | –           | –           | 75.5 ± 55.9 | –           | 100.0 ± 0.0 | 97.4 ± 6.5  |

(a) For people aged 15–64 years.

(b) Profound/severe core activity limitation refers to always or sometimes needing assistance with one or more of the core activities. Core activities comprise communication, mobility and self-care.

(c) The labour force participation and employment rates reported in this table include 95 per cent confidence intervals (for example, X per cent ± X per cent).

**Table 14A.95 Labour force participation and employment of people with a profound or severe core activity limitation, by special needs groups, 2009 (per cent) (a), (b), (c), (d)**

|  | NSW | Vic | Q/d | WA | SA | Tas | ACT | NT | Aust |
|--|-----|-----|-----|----|----|-----|-----|----|------|
|--|-----|-----|-----|----|----|-----|-----|----|------|

(d) Due to differences in collection methodology, the data collected by the ABS Disability Module (used in the Survey of Education and Training Experience) relate to a broader 'disability and long-term health condition' population than the 'disability' population obtained from the much more detailed Survey of Disability, Ageing and Carers — however, the characteristics of the populations are similar. The data are suitable for population comparisons, but not for prevalence updates between Disability, Ageing and Carers surveys.

– Nil or rounded to zero.

Source: ABS *Survey of Education and Training Experience, Australia* (unpublished).

**Table 14A.96 Labour force participation and employment of people with a profound or severe core activity limitation, by special needs groups, 2006 (per cent) (a), (b), (c)**

|   | NSW  | Vic  | Qld  | WA   | SA   | Tas  | ACT  | NT   | Aust |
|---|------|------|------|------|------|------|------|------|------|
| Labour force participation rate                 |      |      |      |      |      |      |      |      |      |
| People in major cities and inner regional areas | 18.0 | 17.1 | 18.4 | 22.8 | 20.2 | 16.2 | 30.9 | ..   | 18.6 |
| People in outer regional and remote areas       | 15.9 | 18.2 | 17.4 | 21.5 | 17.5 | 14.4 | ..   | 21.5 | 17.5 |
| People born in an English speaking country      | 19.5 | 19.9 | 19.0 | 24.0 | 21.2 | 15.8 | 33.8 | 23.3 | 20.1 |
| People born in a non-English speaking country   | 12.0 | 9.4  | 12.9 | 15.6 | 10.6 | 13.7 | 20.4 | 17.8 | 11.5 |
| Non-Indigenous people                           | 18.0 | 17.1 | 18.5 | 23.0 | 20.0 | 15.5 | 31.8 | 29.5 | 18.6 |
| Indigenous people                               | 14.7 | 18.3 | 16.4 | 17.8 | 13.2 | 15.4 | 26.3 | 13.4 | 15.7 |
| Employment rate                                 |      |      |      |      |      |      |      |      |      |
| People in major cities and inner regional areas | 85.0 | 86.0 | 85.7 | 90.4 | 88.8 | 86.8 | 90.4 | ..   | 86.4 |
| People in outer regional and remote areas       | 85.9 | 86.1 | 86.9 | 90.1 | 87.6 | 87.9 | ..   | 91.4 | 87.5 |
| People born in an English speaking country      | 86.1 | 86.6 | 85.9 | 90.4 | 89.0 | 87.6 | 91.4 | 91.4 | 87.1 |
| People born in a non-English speaking country   | 79.3 | 82.7 | 84.0 | 90.2 | 84.6 | 78.3 | 83.5 | 85.7 | 82.3 |
| Non-Indigenous people                           | 85.5 | 86.3 | 86.3 | 90.4 | 88.6 | 87.3 | 90.5 | 93.9 | 86.9 |
| Indigenous people                               | 76.4 | 77.6 | 76.1 | 87.9 | 84.8 | 82.4 | 88.5 | 83.2 | 79.3 |

(a) For people aged 15–64 years.

(b) The ABS 2006 Census module, used to source these data, was designed to measure 'Core Activity Need for Assistance' (ASSNP). In previous years, the data were sourced from the SDAC and the ABS disability module. The ASSNP is conceptually comparable with the SDAC and ABS disability module population of people who have a profound or severe core activity limitation, but due to the different collection methodology and shortening of the question set used, the population identified is smaller (but displays very similar characteristics). It is likely that the reduction is at the less severe end of the profound or severe core activity limitation population. As such, these data will differ from those of previous years.

(c) Profound/severe core activity limitation refers to always or sometimes needing assistance with one or more of the core activities. Core activities comprise communication, mobility and self-care.

.. Not applicable.

Source: ABS unpublished, 2006 *Census of Population and Housing*.