
6 Police services

CONTENTS

Indigenous data in the Police services chapter	6.2
Framework of performance indicators	6.2
Indigenous staffing	6.4
Deaths in police custody and Indigenous deaths in custody	6.5
Definitions of key terms	6.8
List of attachment tables	6.8

Attachment tables

Attachment tables are identified in references throughout this Indigenous Compendium by an 'A' prefix (for example, in this chapter, table 6A.1). As the data are directly sourced from the 2014 Report, the Compendium also notes where the original table, figure or text in the 2014 Report can be found. For example, where the Compendium refers to '2014 Report, p. 6.1', this is page 1 of chapter 6 of the 2014 Report, and '2014 Report, table 6A.1' is table 1 of attachment 6A of the 2014 Report. A full list of attachment tables referred to in the Compendium is provided at the end of this chapter, and the attachment tables are available from the Review website at www.pc.gov.au/gsp.

The Police services chapter (chapter 6) in the *Report on Government Services 2014* (2014 Report) reports on the performance of police services in Australia. Data are reported for Indigenous Australians for a subset of the performance indicators reported in that chapter — those data are compiled and presented here.

Police services are the principal means through which State and Territory governments pursue the achievement of a safe and secure environment for the community. This is through the investigation of criminal offences, response to life threatening situations, provision of services to the judicial process and provision of road safety and traffic management. Police services also respond to more general needs in the community — for example, working with emergency management organisations and a wide range of government services and community groups, and advising on general policing and crime issues. Additionally, police are involved in various activities which aim to improve public safety and prevent crime.

Indigenous data in the Police services chapter

The Police services chapter in the 2014 Report contains the following data for Indigenous Australians:

- Indigenous staffing
- proportion of police staff from Indigenous backgrounds relative to the proportion of the general population who are from Indigenous backgrounds, 2012-13
- deaths in police custody and Indigenous deaths in custody 2007-08 to 2012-13.

Framework of performance indicators

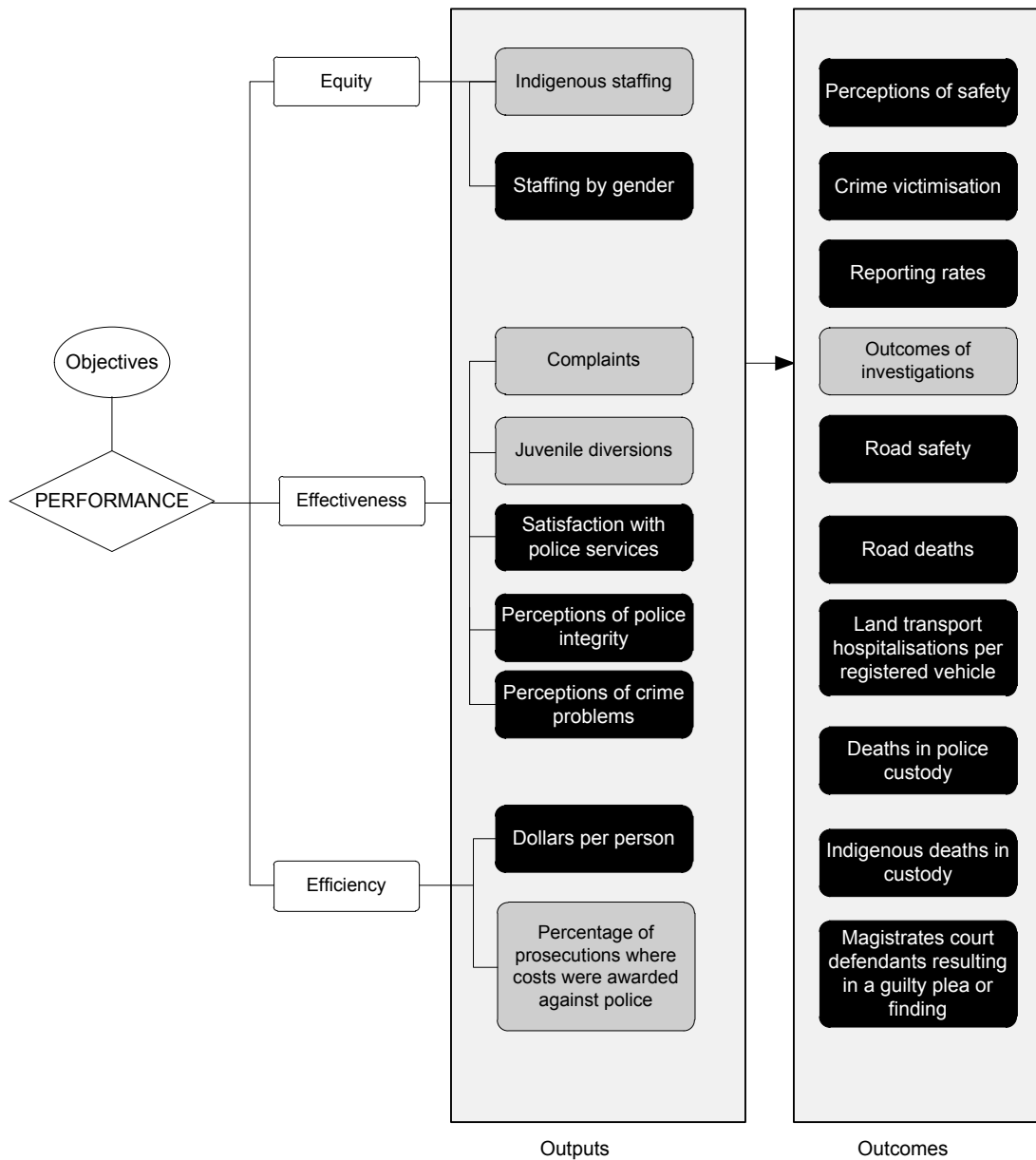
The Police services performance indicator framework outlined in figure 6.1 identifies the principal police activity areas considered in the 2014 Report. Data for Indigenous Australians are reported for a subset of the performance indicators and are presented here. It is important to interpret these data in the context of the broader performance indicator framework. The framework shows which data are comparable. For data that are not considered directly comparable, the text includes relevant caveats and supporting commentary.

Indicator boxes presented throughout the chapter provide information about the reported indicators. As these are sourced directly from the 2014 Report, they might include references to data not reported for Indigenous Australians and therefore not included in this Compendium.

The Report's chapter 2 contains statistical data that may assist in interpreting the performance indicators presented in this chapter. These data cover a range of demographic and geographic characteristics, including age profile, geographic distribution of the population, income levels, education levels, tenure of dwellings and cultural heritage (including Indigenous and ethnic status).

Indicators relevant to all police services are discussed in 2014 Report, section 6.3. These include two 'equity' output indicators — 'Indigenous staffing' and 'police staff by gender'.

Figure 6.1 Police services performance indicator framework



Key to indicators*

- Text Most recent data for all measures are comparable and complete
- Text Most recent data for at least one measure are comparable and complete
- Text Most recent data for all measures are either not comparable and/or not complete
- Text No data reported and/or no measures yet developed

* A description of the comparability and completeness of each measure is provided in indicator interpretation boxes within the chapter

Source: 2014 Report, figure 6.3, p. 6.9.

Indigenous staffing

‘Indigenous staffing’ is an indicator of governments’ objective that provision of services occurs in an equitable manner (box 6.1). Indigenous people might feel more comfortable in ‘accessing’ police services when they are able to deal with Indigenous police staff. However, many factors influence the willingness of Indigenous people to access police services, including familiarity with procedures for dealing with police.

Box 6.1 Indigenous staffing

‘Indigenous staffing’ is defined as the proportion of police staff (operational plus non-operational) from Indigenous backgrounds compared to the proportion of people aged 20–64 years who are from Indigenous backgrounds. These data are used because a significantly larger proportion of the Indigenous population falls within the younger non-working age groupings compared with the non-Indigenous population. Readily available ABS population projections of people aged 20–64 years provide a proxy for the estimated working population.

A proportion of police staff from Indigenous backgrounds closer to the proportion of people aged 20–64 years who are from Indigenous backgrounds represents a more equitable outcome.

The process of identifying Indigenous staff members generally relies on self-identification as being Aboriginal and/or Torres Strait Islander. Where Indigenous people are asked to identify themselves, the accuracy of the data will partly depend on how they perceive the advantages (or disadvantages) of identification and whether these perceptions change over time.

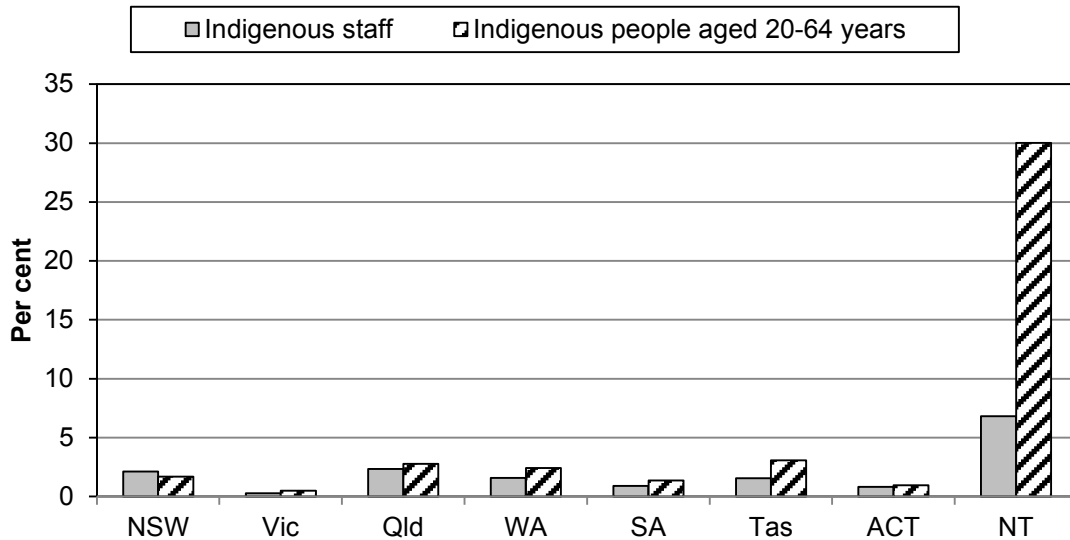
Data reported for this measure are:

- comparable (subject to caveats) across jurisdictions and over time
- complete for the current reporting period (subject to caveats). All required 2012-13 data are available for all jurisdictions.

Data quality information for this indicator is under development.

The proportion of Indigenous police staff in 2012-13 was similar to the representation of Indigenous people in the population aged 20–64 years for all jurisdictions except Tasmania and the NT (figure 6.2).

Figure 6.2 **Proportions of Indigenous staff in 2012-13 and Indigenous people aged 20–64 years^{a, b, c}**



^a Indigenous staff numbers relate to those staff who self-identify as being of Aboriginal and/or Torres Strait Islander descent. ^b Information on Indigenous status is collected generally at the time of recruitment. ^c Data comprise all Full time equivalent (FTE) staff except in the NT, where data are based on a headcount at 30 June.

Source: ABS (2009) *Experimental Estimates and Projections, Indigenous population aged 20–64 years* Cat. no. 3238.0 (Series B); State and Territory governments (unpublished); table 6A.17; 2014 Report, figure 6.5, p. 6.14.

Time series data for police Indigenous staffing are reported in tables 6A.1–6A.8 and 6A.17.

Deaths in police custody and Indigenous deaths in custody

‘Deaths in police custody’, and ‘Indigenous deaths in police custody’ are indicators of governments’ objective to provide safe custody for alleged offenders, and ensure fair and equitable treatment for both victims and alleged offenders (box 6.2).

Box 6.2 Deaths in police custody, and Indigenous deaths in police custody

‘Deaths in police custody’ and ‘Indigenous deaths in police custody’ are defined as the number of non-Indigenous and Indigenous deaths in police custody and custody-related operations.

A low or decreasing number of deaths in custody and custody-related operations is desirable.

Data reported for this measure are:

- comparable (subject to caveats) across jurisdictions and over time
- complete for the current reporting period (subject to caveats). All required 2012-13 data are available for all jurisdictions.

Data quality information for this indicator is at www.pc.gov.au/gsp/reports/rogs/2014.

Nationally, there were 18 deaths in police custody and custody-related operations in 2012-13. Of these 18 deaths, 5 were Indigenous (table 6.1). Time series data are available in table 6A.38.

Table 6.1 **Deaths in police custody and custody-related operations^{a, b}**

	<i>NSW</i>	<i>Vic</i>	<i>Qld</i>	<i>WA</i>	<i>SA</i>	<i>Tas</i>	<i>ACT</i>	<i>NT</i>	<i>Aust</i>
Non-Indigenous deaths									
2007-08	7	8	4	4	2	1	–	3	29
2008-09	6	3	7	7	4	–	1	1	29
2009-10	3	6	6	1	1	1	1	2	21
2010-11	5	1	6	1	2	2	1	–	18
2011-12	10	6	8	5	3	–	–	–	32
2012-13	5	2	3	3	–	–	–	–	13
Indigenous deaths									
2007-08	–	–	1	–	2	–	–	2	5
2008-09	–	–	1	1	2	–	–	4	8
2009-10	2	–	–	2	–	–	–	2	6
2010-11	1	–	1	5	–	–	–	–	7
2011-12	–	–	1	–	–	–	–	2	3
2012-13	–	–	1	3	1	–	–	–	5
Total Indigenous deaths 2007–08 to 2012-13	3	–	5	11	5	–	–	10	34
Total deaths									
2007-08	7	8	5	4	4	1	–	5	34
2008-09	6	3	8	8	6	–	1	5	37
2009-10	5	6	6	3	1	1	1	4	27
2010-11	6	1	7	6	2	2	1	–	25
2011-12	10	6	9	5	3	–	–	2	35
2012-13	5	2	4	6	1	–	–	–	18
Total deaths 2007–08 to 2012-13	39	26	39	32	17	4	3	16	176

^a Deaths in police custody include: deaths in institutional settings (for example, police stations/lockups and police vehicles, or during transfer to or from such an institution, or in hospitals following transfer from an institution); and other deaths in police operations where officers were in close contact with the deceased (for example, most raids and shootings by police). Deaths in custody-related operations cover situations where officers did not have such close contact with the person as to be able to significantly influence or control the person's behaviour (for example, most sieges and most cases where officers were attempting to detain a person, such as pursuits). ^b The AIC data are subject to revision and data in other publications might differ. Also, data for historic years were revised during 2010 and are now presented on a financial year basis so they differ from those in earlier reports. – Nil or rounded to zero.

Source: AIC (various years, unpublished) *Deaths in Custody*, Australia; table 6A.38; 2014 Report, table 6.3, p. 6.57.

Definitions of key terms

Full time equivalent (FTE)	The equivalent number of full time staff required to provide the same hours of work as performed by staff actually employed. A full time staff member is equivalent to a full time equivalent of one, while a part time staff member is greater than zero but less than one.
Indigenous staff	Number of staff who are identified as being of Aboriginal or Torres Strait Islander descent.
Offender	In the Police Services chapter, the term 'offender' refers to a person who is alleged to have committed an offence. This definition is not the same as the definition used in chapter 8 (Corrective services).

List of attachment tables

Attachment tables for data within this chapter are contained in the attachment to the Compendium. These tables are identified in references throughout this chapter by a '6A' prefix (for example, table 6A.1 is table 1 in the School education attachment). Attachment tables are on the Review website (www.pc.gov.au/gsp).

Table 6A.1	Police service expenditure, staff and asset descriptors, NSW
Table 6A.2	Police service expenditure, staff and asset descriptors, Victoria
Table 6A.3	Police service expenditure, staff and asset descriptors, Queensland
Table 6A.4	Police service expenditure, staff and asset descriptors, WA
Table 6A.5	Police service expenditure, staff and asset descriptors, SA
Table 6A.6	Police service expenditure, staff and asset descriptors, Tasmania
Table 6A.7	Police service expenditure, staff and asset descriptors, ACT
Table 6A.8	Police service expenditure, staff and asset descriptors, NT
Table 6A.17	Indigenous, sworn and unsworn police staff
Table 6A.38	Number of deaths in police custody and custody-related operations, 2007-08 to 2012-13

6A Police services — attachment

Tables in this attachment are sourced from the Police services attachment of the 2014 Report. Table numbers refer to the 2014 Report, for example, a reference to ‘2014 Report, table 6A.15’ refers to attachment table 15 of attachment 6A of the 2014 Report.

Definitions for indicators and descriptors in this attachment are in the Police services chapter of the Compendium.

Data in this Compendium are examined by the Police Services Working Group, but have not been formally audited by the Secretariat. Unsourced information was obtained from the Australian, State and Territory governments.

This file is available in Adobe PDF format on the Review web page (www.pc.gov.au/gsp).

Attachment contents

Table 6A.1	Police service expenditure, staff and asset descriptors, NSW
Table 6A.2	Police service expenditure, staff and asset descriptors, Victoria
Table 6A.3	Police service expenditure, staff and asset descriptors, Queensland
Table 6A.4	Police service expenditure, staff and asset descriptors, WA
Table 6A.5	Police service expenditure, staff and asset descriptors, SA
Table 6A.6	Police service expenditure, staff and asset descriptors, Tasmania
Table 6A.7	Police service expenditure, staff and asset descriptors, ACT
Table 6A.8	Police service expenditure, staff and asset descriptors, NT
Table 6A.17	Indigenous, sworn and unsworn police staff
Table 6A.38	Number of deaths in police custody and custody-related operations, 2007-08 to 2012-13

TABLE 6A.1

Table 6A.1 **Police service expenditure, staff and asset descriptors, NSW**

	<i>Unit</i>	<i>2007-08</i>	<i>2008-09</i>	<i>2009-10</i>	<i>2010-11</i>	<i>2011-12</i>	<i>2012-13</i>
Expenditure							
Recurrent expenditure (a)							
Salaries and payments in the nature of salaries							
Salaries and related payments	\$m	1 616.0	1 729.6	1 863.3	2 086.2	2 195.6	2 120.8
Superannuation	\$m	194.6	186.2	190.7	208.2	264.7	285.7
Payroll tax	\$m	99.9	99.7	102.8	102.4	114.2	108.7
Total salaries and payments	\$m	1 910.5	2 015.5	2 156.8	2 396.7	2 574.4	2 515.2
Other recurrent expenditure	\$m	432.7	421.7	434.9	427.8	463.3	482.0
Depreciation	\$m	105.1	106.6	115.2	132.8	125.6	136.5
Total recurrent expenditure	\$m	2 448.3	2 543.9	2 707.0	2 957.3	3 163.3	3 133.7
Net recurrent expenditure							
Revenue from own sources (ROS) (e)	\$m	118.8	91.3	69.4	89.4	90.0	101.9
Total recurrent expenditure less ROS and payroll tax	\$m	2 229.6	2 352.9	2 534.7	2 765.5	2 959.1	2 923.0
Capital expenditure							
User cost of capital (b)	\$m	85.9	90.5	92.9	92.6	98.8	104.4
Capital expenditure (f)	\$m	142.2	120.0	130.4	153.7	135.7	137.3
Expenditure aggregates							
Total cash expenditure (c)	\$m	2 485.4	2 557.2	2 722.1	2 978.2	3 173.3	3 134.5
Total accrual costs (d)	\$m	2 534.1	2 634.3	2 799.9	3 050.0	3 262.1	3 238.1
Staffing costs							
Average police staff costs	\$	105 572	109 379	119 129	131 235	138 771	132 969
Average non-police staff costs	\$	85 411	88 244	91 526	95 353	109 425	104 030
Staff by Indigenous and operational status							

TABLE 6A.1

Table 6A.1 Police service expenditure, staff and asset descriptors, NSW

	<i>Unit</i>	<i>2007-08</i>	<i>2008-09</i>	<i>2009-10</i>	<i>2010-11</i>	<i>2011-12</i>	<i>2012-13</i>
Operational FTE staff							
Sworn (h)	FTE	14 560	14 587	14 917	15 179	15 230	15 456
Civilian	FTE	1 617	1 927	1 731	1 685	1 627	1 647
Other	FTE	140	163	154	169	172	169
Operational FTE staff	FTE	16 317	16 677	16 802	17 033	17 029	17 272
Non-operational FTE staff							
Sworn	FTE	460	807	370	418	412	569
Civilian	FTE	2 017	1 639	1 751	1 787	1 866	1 854
Other	FTE	29	30	32	28	25	25
Non-operational FTE staff	FTE	2 506	2 476	2 153	2 233	2 303	2 448
Total staff	FTE	18 823	19 153	18 955	19 266	19 332	19 720
Indigenous FTE staff (g)							
Operational	FTE	219	230	271	328	332	287
Non-operational	FTE	61	78	50	125	123	134
Indigenous FTE staff	FTE	280	308	321	453	455	421
Assets by value							
Land	\$'000	358 536	403 692	442 873	440 886	401 296	407 927
Buildings and fittings	\$'000	553 628	601 279	627 697	629 166	707 346	754 480
Other	\$'000	519 508	529 511	534 112	528 949	527 038	550 426
Total value of assets	\$'000	1 431 672	1 534 482	1 604 682	1 599 001	1 635 680	1 712 833

(a) Salaries and payments in the nature of salaries include long service leave, workers' compensation insurance and fringe benefits tax.

(b) User cost of capital is calculated at an opportunity cost of 8 per cent per annum on total value of assets (excluding land).

(c) Comprises salaries and payments in the nature of salary, other recurrent expenditure, and capital expenditure.

(d) Comprises salaries and payments in the nature of salary, other recurrent expenditure, depreciation, and the user cost of capital.

(e) This will differ from Audited Financial Statements Revenue includes recurrent grant (appropriation) however disclosure is consistent with prior year RoGS.

TABLE 6A.1

Table 6A.1 Police service expenditure, staff and asset descriptors, NSW

	<i>Unit</i>	<i>2007-08</i>	<i>2008-09</i>	<i>2009-10</i>	<i>2010-11</i>	<i>2011-12</i>	<i>2012-13</i>
(f)	This amount is now included as part of total revenue in the Audited Financial Statements (appropriation), however disclosure is consistent with prior year RoGS.						

(g) Figures sourced from WRS Aboriginal Employment Program.

(h) Increase in Authorised Strength of 150 on 1 January 2012.

Source: NSW Government (unpublished).

TABLE 6A.2

Table 6A.2 **Police service expenditure, staff and asset descriptors, Victoria**

	<i>Unit</i>	<i>2007-08</i>	<i>2008-09</i>	<i>2009-10</i>	<i>2010-11</i>	<i>2011-12</i>	<i>2012-13</i>
Expenditure							
Recurrent expenditure							
Salaries and payments in the nature of salaries							
Salaries and related payments	\$m	981.4	1 040.7	1 117.1	1 150.2	1 281.0	1 334.2
Superannuation	\$m	116.1	120.2	122.3	138.1	142.7	153.1
Payroll tax	\$m	53.0	52.9	57.2	63.9	62.6	69.9
Total salaries and payments	\$m	1 150.5	1 213.7	1 296.6	1 352.1	1 486.2	1 557.2
Other recurrent expenditure	\$m	414.2	442.5	489.0	529.1	519.5	497.2
Depreciation	\$m	54.6	52.9	56.8	62.1	67.0	71.2
Total recurrent expenditure	\$m	1 619.2	1 709.1	1 842.5	1 943.4	2 072.7	2 125.6
Net recurrent expenditure							
Revenue from own sources (ROS)	\$m	15.8	11.4	13.8	13.9	15.2	17.1
Total recurrent expenditure less ROS and payroll tax	\$m	1 550.4	1 644.9	1 771.4	1 865.6	1 994.9	2 038.6
Capital expenditure							
User cost of capital (a)	\$m	50.5	53.1	58.0	74.0	72.5	72.9
Capital expenditure	\$m	62.6	86.7	120.8	98.6	84.7	75.4
Expenditure aggregates							
Total cash expenditure (b)	\$m	1 627.2	1 742.9	1 906.5	1 979.8	2 090.5	2 129.8
Total accrual costs (c)	\$m	1 669.7	1 762.2	1 900.4	2 017.4	2 145.2	2 198.5
Staffing costs							
Average police staff costs	\$	90 234	94 309	98 260	97 103	102 330	107 429
Average non-police staff costs	\$	57 052	60 454	60 568	62 196	66 508	65 198

TABLE 6A.2

Table 6A.2 Police service expenditure, staff and asset descriptors, Victoria

	<i>Unit</i>	<i>2007-08</i>	<i>2008-09</i>	<i>2009-10</i>	<i>2010-11</i>	<i>2011-12</i>	<i>2012-13</i>
Staff by Indigenous and operational status							
Operational FTE staff							
Sworn	FTE	10 554	10 547	10 968	11 752	12 324	12 506
Civilian (d)	FTE	354	386	1 825	2 139	1 791	1 837
Other	FTE	144	141	152	153	295	538
Operational FTE staff	FTE	11 052	11 074	12 945	14 044	14 410	14 881
Non-operational FTE staff							
Sworn	FTE	467	481	325	145	154	34
Civilian	FTE	2 079	2 175	857	602	937	685
Other	FTE	157	171	253	272	125	162
Non-operational FTE staff	FTE	2 703	2 827	1 435	1 019	1 216	881
Total staff	FTE	13 755	13 901	14 380	15 063	15 626	15 762
Indigenous FTE staff (e)							
Operational	FTE	na	na	34	50	44	43
Non-operational	FTE	na	na	1	1	3	1
Indigenous FTE staff	FTE	na	na	na	na	47	44
Assets by value (f)							
Land	\$'000	227 912	225 476	225 823	373 338	366 744	374 094
Buildings and fittings	\$'000	522 449	551 617	602 997	802 766	783 837	788 037
Other	\$'000	108 883	112 268	121 651	122 143	121 831	123 180
Total value of assets	\$'000	859 244	889 361	950 471	1 298 247	1 272 412	1 285 311

(a) User cost of capital is calculated at an opportunity cost of 8 per cent per annum on total value of assets (excluding land).

TABLE 6A.2

Table 6A.2 **Police service expenditure, staff and asset descriptors, Victoria**

<i>Unit</i>	<i>2007-08</i>	<i>2008-09</i>	<i>2009-10</i>	<i>2010-11</i>	<i>2011-12</i>	<i>2012-13</i>
(b) Comprises salaries and payments in the nature of salary, other recurrent expenditure, and capital expenditure.						
(c) Comprises salaries and payments in the nature of salary, other recurrent expenditure, depreciation, and the user cost of capital.						
(d) A comprehensive review of civilian position descriptions, relative to the definition of operational staff contained in the Police Services Working Group Data Manual, has led to the reclassification of a significant number of those positions as operational as distinct from non-operational in 2009-10 data. Data for previous years have not been revised. Organisational restructures have resulted in civilian support duties being more closely aligned with sworn operational areas and an increase in the relative number of operational civilians.						
(e) The introduction of a new human resources system has supported initial capture of data relating to Indigenous status. The data are indicative only (provided on a voluntary basis). Indigenous and non-Indigenous staff were unable to be separated in Victoria prior to 2009-10.						
(f) Land and buildings revalued in 2010-11.						

na Not available.

Source: Victorian Government (unpublished).

TABLE 6A.3

Table 6A.3 Police service expenditure, staff and asset descriptors, Queensland

	<i>Unit</i>	<i>2007-08</i>	<i>2008-09</i>	<i>2009-10</i>	<i>2010-11</i>	<i>2011-12</i>	<i>2012-13</i>
Expenditure (a)							
Recurrent expenditure							
Salaries and payments in the nature of salaries							
Salaries and related payments	\$m	917.9	1 003.5	1 094.2	1 179.0	1 261.3	1 298.7
Superannuation	\$m	119.9	127.6	141.2	149.6	158.1	165.1
Payroll tax	\$m	48.3	53.0	56.9	61.3	64.0	67.1
Total salaries and payments	\$m	1 086.0	1 184.1	1 292.3	1 389.9	1 483.4	1 530.9
Other recurrent expenditure	\$m	267.6	274.5	312.0	309.0	342.3	328.8
Depreciation (b)	\$m	62.6	68.3	67.8	86.3	89.9	95.5
Total recurrent expenditure	\$m	1 416.2	1 526.9	1 672.1	1 785.1	1 915.7	1 955.2
Net recurrent expenditure							
Revenue from own sources (ROS)	\$m	67.6	72.5	73.3	79.0	91.8	85.4
Total recurrent expenditure less ROS and payroll tax	\$m	1 300.3	1 401.3	1 541.9	1 644.9	1 759.9	1 802.8
Capital expenditure							
User cost of capital (c)	\$m	93.3	104.3	104.9	108.0	110.6	109.0
Capital expenditure	\$m	171.6	224.9	149.8	149.6	139.7	99.5
Expenditure aggregates							
Total cash expenditure (d)	\$m	1 525.2	1 683.5	1 754.1	1 848.4	1 965.4	1 959.3
Total accrual costs (e)	\$m	1 509.5	1 631.2	1 777.0	1 893.1	2 026.3	2 064.3
Staffing costs							
Average police staff costs	\$	90 481	93 948	100 570	106 787	111 419	113 151
Average non-police staff costs (i)	\$	53 878	56 849	62 527	64 522	75 111	77 605

TABLE 6A.3

Table 6A.3 Police service expenditure, staff and asset descriptors, Queensland

	<i>Unit</i>	<i>2007-08</i>	<i>2008-09</i>	<i>2009-10</i>	<i>2010-11</i>	<i>2011-12</i>	<i>2012-13</i>
Staff by Indigenous and operational status							
Operational FTE staff							
Sworn	FTE	9 129	9 450	9 808	9 899	9 989	10 421
Civilian (f),(h)	FTE	1 548	1 592	2 954	2 995	2 782	2 632
Other	FTE	459	501	325	326	335	307
Operational FTE staff	FTE	11 136	11 543	13 087	13 220	13 106	13 360
Non-operational FTE staff							
Sworn	FTE	566	674	485	486	514	444
Civilian (h)	FTE	1 368	1 427	466	555	526	456
Other	FTE	500	578	368	478	526	490
Non-operational FTE staff	FTE	2 434	2 679	1 319	1 519	1 566	1 390
Total staff	FTE	13 570	14 222	14 406	14 739	14 672	14 750
Indigenous FTE staff							
Operational	FTE	310	301	316	311	298	325
Non-operational	FTE	20	20	22	21	20	22
Indigenous FTE staff (g)	FTE	330	321	338	332	318	347
Assets by value							
Land	\$'000	500 749	532 321	508 884	471 643	474 206	466 487
Buildings and fittings	\$'000	897 933	952 335	981 641	978 477	1 028 423	986 754
Other	\$'000	267 971	351 094	329 268	371 039	354 468	376 352
Total value of assets	\$'000	1 666 653	1 835 750	1 819 793	1 821 159	1 857 097	1 829 593

(a) Salaries, payroll tax, other recurrent expenditure, revenue from own sources, capital expenditure, value of land and other assets, and depreciation for 2008-09 was adjusted in the 2011 RoGS. Data revision was required mainly due to audit requirements and updated major project expenses, changed treatment of non reciprocal grants and prepayment of government appropriations, and changes in salary recoveries.

TABLE 6A.3

Table 6A.3 **Police service expenditure, staff and asset descriptors, Queensland**

	<i>Unit</i>	<i>2007-08</i>	<i>2008-09</i>	<i>2009-10</i>	<i>2010-11</i>	<i>2011-12</i>	<i>2012-13</i>
(b)	Depreciation is calculated on a straight-line basis so as to write off net cost or revalued amount of each depreciable asset, less its estimated residual value, progressively over its estimated useful life.						
(c)	User cost of capital is calculated at an opportunity cost of 8 per cent per annum on total value of assets (excluding land).						
(d)	Comprises salaries and payments in the nature of salary, other recurrent expenditure, and capital expenditure.						
(e)	Comprises salaries and payments in the nature of salary, other recurrent expenditure, depreciation, and the user cost of capital.						
(f)	A comprehensive review of civilian position descriptions, relative to the definition of operational staff contained in the Police Services Working Group Data Manual, led to the reclassification of a significant number of positions as operational in 2009-10 data. Data for previous years were not revised.						
(g)	Indigenous staff numbers relate to those staff who self identify as being of Aboriginal or Torres Strait Islander descent.						
(h)	The decrease in civilian operational and non operational staff is a result of State Government initiatives in 2011-12 to reduce the size of the Queensland Public Sector.						
(i)	The average non-police staff costs are calculated as the Total Non-Police Staff Expenditure over the Total Non-Police FTE numbers for that year. The increase in the average non-police staff costs in 2011-12 is a result of severance payments and 2011-12 non-police FTE numbers being less than in 2010-11.						

Source: Queensland Government (unpublished).

TABLE 6A.4

Table 6A.4 **Police service expenditure, staff and asset descriptors, WA**

	<i>Unit</i>	<i>2007-08</i>	<i>2008-09</i>	<i>2009-10</i>	<i>2010-11</i>	<i>2011-12</i>	<i>2012-13</i>
Expenditure							
Recurrent expenditure							
Salaries and payments in the nature of salaries							
Salaries and related payments	\$m	558.0	626.5	661.9	721.2	793.2	792.9
Superannuation	\$m	53.2	54.3	60.8	60.7	69.4	72.0
Payroll tax (a)	\$m	31.2	34.6	40.1	43.2	43.8	43.6
Total salaries and payments	\$m	642.3	715.4	762.8	825.1	906.4	908.5
Other recurrent expenditure (b)	\$m	181.1	201.9	216.3	256.8	269.8	258.8
Depreciation (c)	\$m	37.8	40.9	40.0	40.4	42.1	45.2
Total recurrent expenditure	\$m	861.2	958.2	1 019.0	1 122.3	1 218.2	1 212.5
Net recurrent expenditure							
Revenue from own sources (ROS)	\$m	25.1	25.7	30.9	37.3	39.7	41.8
Total recurrent expenditure less ROS and payroll tax	\$m	804.9	898.0	948.1	1 041.8	1 134.8	1 127.1
Capital expenditure							
User cost of capital (d)	\$m	41.8	45.6	46.2	50.7	55.4	56.5
Capital expenditure	\$m	65.0	66.9	76.8	67.2	123.8	79.7
Expenditure aggregates							
Total cash expenditure (e)	\$m	888.4	984.2	1 055.9	1 149.1	1 299.9	1 247.0
Total accrual costs (f)	\$m	903.0	1 003.8	1 065.2	1 173.0	1 273.6	1 269.0
Staffing costs							
Average police staff costs (h)	\$	99 659	105 901	113 558	119 389	132 150	130 138
Average non-police staff costs (i)	\$	64 857	66 908	74 154	75 102	78 039	79 156

TABLE 6A.4

Table 6A.4 Police service expenditure, staff and asset descriptors, WA

	Unit	2007-08	2008-09	2009-10	2010-11	2011-12	2012-13
Staff by Indigenous and operational status							
Operational FTE staff							
Sworn	FTE	4 813	5 176	5 118	5 157	5 290	5 319
Civilian	FTE	866	1 034	1 097	1 131	1 190	1 208
Other	FTE	31	114	167	206	274	263
Operational FTE staff	FTE	5 710	6 324	6 382	6 494	6 754	6 790
Non-operational FTE staff							
Sworn	FTE	569	346	353	505	344	407
Civilian	FTE	704	767	608	594	560	550
Other	FTE	33	37	36	55	50	42
Non-operational FTE staff	FTE	1 306	1 150	997	1 154	954	999
Total staff	FTE	7 016	7 474	7 379	7 648	7 708	7 789
Indigenous FTE staff							
Operational	FTE	141	124	136	125	110	112
Non-operational	FTE	7	12	13	8	8	11
Indigenous FTE staff (g)	FTE	148	136	149	133	118	123
Assets by value							
Land	\$'000	169 936	174 418	151 831	179 627	200 216	243 279
Buildings and fittings	\$'000	340 759	404 272	405 922	452 627	440 491	499 820
Other	\$'000	181 612	165 267	171 305	181 312	252 153	205 883
Total value of assets	\$'000	692 307	743 957	729 058	813 566	892 860	948 982

(a) WA does not pay payroll tax, however the 'notional' payroll tax rate for WA has been estimated based on 5.5 per cent of payroll costs.

(b) Includes training costs (previously reported under salaries).

(c) Depreciation based on the straight-line method of calculation. Data for 2007-08 include \$3.1 million in impairment expense.

TABLE 6A.4

Table 6A.4 **Police service expenditure, staff and asset descriptors, WA**

<i>Unit</i>	<i>2007-08</i>	<i>2008-09</i>	<i>2009-10</i>	<i>2010-11</i>	<i>2011-12</i>	<i>2012-13</i>
-------------	----------------	----------------	----------------	----------------	----------------	----------------

(d) User cost of capital is calculated at an opportunity cost of 8 per cent per annum on total value of assets (excluding land).

(e) Comprises salaries and payments in the nature of salary, other recurrent expenditure, and capital expenditure.

(f) Comprises salaries and payments in the nature of salary, other recurrent expenditure, depreciation, and the user cost of capital.

(g) Employees Indigenous status is provided on a voluntary basis.

(h) Calculated by dividing sworn police staff expenditure by sworn police numbers.

(i) Calculated by dividing non-police staff expenditure by non-police staff numbers.

Source: WA Government (unpublished).

TABLE 6A.5

Table 6A.5 **Police service expenditure, staff and asset descriptors, SA**

	<i>Unit</i>	<i>2007-08</i>	<i>2008-09</i>	<i>2009-10</i>	<i>2010-11</i>	<i>2011-12</i>	<i>2012-13</i>
Expenditure							
Recurrent expenditure							
Salaries and payments in the nature of salaries							
Salaries and related payments (a)	\$m	400.7	436.7	444.4	475.4	512.1	508.2
Superannuation (b)	\$m	51.3	55.6	54.4	58.0	61.3	63.6
Payroll tax	\$m	22.1	23.2	24.0	25.8	26.8	28.3
Total salaries and payments	\$m	474.1	515.5	522.9	559.2	600.3	600.0
Other recurrent expenditure (c)	\$m	106.7	110.3	119.7	124.4	133.8	132.6
Depreciation (f)	\$m	15.0	17.2	17.3	15.6	20.6	22.1
Total recurrent expenditure	\$m	595.8	643.0	659.8	699.2	754.6	754.7
Net recurrent expenditure							
Revenue from own sources (ROS) (d)	\$m	57.0	61.6	70.5	62.3	78.0	82.9
Total recurrent expenditure less ROS and payroll tax	\$m	516.7	558.1	565.3	611.1	649.8	643.5
Capital expenditure							
User cost of capital	\$m	13.9	13.3	12.7	15.6	22.7	23.4
Capital expenditure (e)	\$m	13.7	17.3	36.7	60.0	27.9	23.4
Expenditure aggregates							
Total cash expenditure	\$m	594.4	643.2	679.3	743.6	761.9	756.1
Total accrual costs	\$m	609.6	656.3	672.5	714.7	777.4	778.1
Staffing costs							
Average police staff costs	\$	100 564	107 338	103 277	111 787	116 901	116 376
Average non-police staff costs	\$	49 412	52 160	59 549	59 747	64 878	70 774

TABLE 6A.5

Table 6A.5 **Police service expenditure, staff and asset descriptors, SA**

	<i>Unit</i>	<i>2007-08</i>	<i>2008-09</i>	<i>2009-10</i>	<i>2010-11</i>	<i>2011-12</i>	<i>2012-13</i>
Staff by Indigenous and operational status							
Operational FTE staff							
Sworn	FTE	3 986	4 083	4 265	4 313	4 428	4 428
Civilian	FTE	748	774	813	805	803	802
Other	FTE	27	28	27	25	25	23
Operational FTE staff	FTE	4 761	4 885	5 105	5 143	5 256	5 253
Non-operational FTE staff							
Sworn	FTE	130	126	114	76	78	64
Civilian	FTE	282	272	233	222	229	218
Other	FTE	160	148	113	95	76	49
Non-operational FTE staff	FTE	572	546	460	393	383	331
Total staff	FTE	5 333	5 431	5 565	5 536	5 639	5 584
Indigenous FTE staff							
Operational	FTE	58	56	53	52	55	50
Non-operational	FTE	5	2	1	1	–	–
Indigenous FTE staff	FTE	63	58	54	53	55	50
Assets by value							
Land	\$'000	54 334	55 143	55 700	66 367	66 797	66 668
Buildings and fittings	\$'000	139 237	133 304	127 260	157 834	245 427	255 132
Other	\$'000	34 046	32 849	30 896	36 609	38 641	37 465
Total value of assets	\$'000	227 617	221 296	213 856	260 810	350 865	359 265

(a) Decrease in workers compensation and long service leave (LSL) provisions in 2012-13 offset by police Enterprise Bargaining (EB) increase.

(b) Police EB offset by decrease in LSL.

TABLE 6A.5

Table 6A.5 **Police service expenditure, staff and asset descriptors, SA**

<i>Unit</i>	<i>2007-08</i>	<i>2008-09</i>	<i>2009-10</i>	<i>2010-11</i>	<i>2011-12</i>	<i>2012-13</i>
(c) Mainly reflects a decrease in accommodation due to the new Police Academy and move to new Police Headquarters being finalised.						
(d) Mainly relates to hoon recoveries and revenue relating to CrimTrac.						
(e) Net decrease takes into account the completion of the new Police Academy in 2012 partially offset by the expenditure relating to the new Murray Bridge Police Station and new Road Safety School.						
(f) Relates to full year depreciation for the new Police Academy and new Police Headquarters and part year depreciation of the new Murray Bridge Police Station and new Road Safety School.						

Source: SA Government (unpublished).

TABLE 6A.6

Table 6A.6 **Police service expenditure, staff and asset descriptors, Tasmania**

	<i>Unit</i>	<i>2007-08</i>	<i>2008-09</i>	<i>2009-10</i>	<i>2010-11</i>	<i>2011-12</i>	<i>2012-13</i>
Expenditure							
Recurrent expenditure							
Salaries and payments in the nature of salaries							
Salaries and related payments (a)	\$m	114.2	122.5	128.1	138.5	138.3	137.1
Superannuation	\$m	12.3	12.9	13.6	16.1	16.3	16.0
Payroll tax (b)	\$m	7.4	8.1	8.5	9.1	6.5	2.2
Total salaries and payments	\$m	133.9	143.5	150.2	163.7	161.1	155.3
Other recurrent expenditure	\$m	39.0	38.5	46.6	48.4	50.3	45.7
Depreciation	\$m	4.3	4.5	5.2	6.6	7.3	7.1
Total recurrent expenditure	\$m	177.2	186.6	202.1	218.8	218.7	208.1
Net recurrent expenditure							
Revenue from own sources (ROS)	\$m	19.3	8.4	14.0	20.2	28.6	26.3
Total recurrent expenditure less ROS and payroll tax	\$m	150.5	170.0	179.6	189.5	183.6	179.5
Capital expenditure							
User cost of capital (c)	\$m	10.1	13.0	13.5	13.9	13.0	13.3
Capital expenditure	\$m	1.0	10.1	6.0	8.3	9.5	13.9
Expenditure aggregates							
Total cash expenditure (d)	\$m	173.8	192.1	202.8	220.4	220.9	214.9
Total accrual costs (e)	\$m	187.2	199.5	215.6	232.7	231.6	221.4
Staffing costs							
Average police staff costs	\$	91 531	95 916	101 724	108 612	108 171	114 107
Average non-police staff costs	\$	59 644	69 859	75 825	86 386	99 633	97 993

TABLE 6A.6

Table 6A.6 Police service expenditure, staff and asset descriptors, Tasmania

	<i>Unit</i>	<i>2007-08</i>	<i>2008-09</i>	<i>2009-10</i>	<i>2010-11</i>	<i>2011-12</i>	<i>2012-13</i>
Staff by Indigenous and operational status							
169 Operational FTE staff							
Sworn	FTE	1 135	1 169	1 145	1 193	1 150	1 064
Civilian	FTE	240	230	227	222	204	185
Other	FTE	–	–	–	–	–	–
Operational FTE staff	FTE	1 375	1 399	1 372	1 415	1 354	1 249
Non-operational FTE staff							
Sworn	FTE	46	43	50	40	48	50
Civilian	FTE	146	137	126	123	112	102
Other	FTE	46	23	25	–	–	1
Non-operational FTE staff	FTE	238	203	201	163	160	153
Total staff	FTE	1 613	1 602	1 573	1 578	1 514	1 402
Indigenous FTE staff							
Operational	FTE	27	27	27	25	24	22
Non-operational	FTE	2	2	1	1	1	–
Indigenous FTE staff	FTE	29	29	28	26	25	22
Assets by value							
Land	\$'000	26 992	34 504	36 231	35 164	34 976	34 701
Buildings and fittings	\$'000	109 185	139 752	144 825	147 841	133 756	135 537
Other	\$'000	16 485	22 651	24 531	26 114	28 318	31 272
Total value of assets	\$'000	152 662	196 907	205 587	209 119	197 050	201 510

(a) Includes redundancy program in 2012-13

(b) Payroll tax ceased from 1 Oct 2012

(c) User cost of capital is calculated at an opportunity cost of 8 per cent per annum on total value of assets (excluding land). Capital expenditure includes only capital appropriations.

TABLE 6A.6

Table 6A.6 **Police service expenditure, staff and asset descriptors, Tasmania**

<i>Unit</i>	<i>2007-08</i>	<i>2008-09</i>	<i>2009-10</i>	<i>2010-11</i>	<i>2011-12</i>	<i>2012-13</i>
-------------	----------------	----------------	----------------	----------------	----------------	----------------

(d) Comprises salaries and payments in the nature of salary, other recurrent expenditure and capital expenditure.

(e) Comprises salaries and payments in the nature of salary, other recurrent expenditure, depreciation and the user cost of capital.

Source: Tasmanian Government (unpublished).

TABLE 6A.7

Table 6A.7 Police service expenditure, staff and asset descriptors, ACT

	<i>Unit</i>	<i>2007-08</i>	<i>2008-09</i>	<i>2009-10</i>	<i>2010-11</i>	<i>2011-12</i>	<i>2012-13</i>
Expenditure							
Recurrent expenditure							
Salaries and payments in the nature of salaries							
Salaries and related payments	\$m	79.2	85.4	88.4	91.4	96.5	94.4
Superannuation	\$m	9.9	12.0	13.7	16.6	17.8	17.1
Payroll tax (a)	\$m	–	–	–	–	–	–
Total salaries and payments	\$m	89.0	97.4	102.1	108.0	114.3	111.5
Other recurrent expenditure	\$m	26.7	28.2	34.7	36.0	35.1	35.4
Depreciation	\$m	2.4	3.5	3.4	4.5	5.0	5.5
Total recurrent expenditure	\$m	118.1	129.1	140.1	148.5	154.3	152.3
Net recurrent expenditure							
Revenue from own sources (ROS)	\$m	1.4	0.6	0.3	0.8	1.1	0.9
Total recurrent expenditure less ROS and payroll tax (b)	\$m	116.7	128.5	139.8	147.7	153.2	151.4
Capital expenditure							
User cost of capital (c)	\$m	3.5	3.3	3.4	3.6	5.9	6.0
Capital expenditure	\$m	2.0	4.3	8.9	15.6	14.2	4.5
Expenditure aggregates							
Total cash expenditure (d)	\$m	117.6	129.9	145.6	159.6	163.6	151.4
Total accrual costs (e)	\$m	121.7	132.4	143.5	152.1	160.2	158.4
Staffing costs							
Average police staff costs	\$	101 108	103 151	109 240	117 483	128 478	122 941
Average non-police staff costs	\$	100 373	102 787	108 974	86 474	98 973	93 448

TABLE 6A.7

Table 6A.7 Police service expenditure, staff and asset descriptors, ACT

	<i>Unit</i>	<i>2007-08</i>	<i>2008-09</i>	<i>2009-10</i>	<i>2010-11</i>	<i>2011-12</i>	<i>2012-13</i>
Staff by Indigenous and operational status							
Operational FTE staff							
Sworn	FTE	652	707	678	697	673	674
Civilian	FTE	98	112	120	161	162	167
Other	FTE	–	–	–	–	–	–
Operational FTE staff	FTE	750	819	798	858	835	841
Non-operational FTE staff							
Sworn	FTE	26	22	29	22	17	21
Civilian	FTE	106	104	108	111	97	112
Other	FTE	–	–	–	–	–	–
Non-operational FTE staff	FTE	132	126	137	133	114	133
Total staff	FTE	882	945	935	991	949	974
Indigenous FTE staff							
Operational	FTE	1	1	8	7	7	6
Non-operational	FTE	1	na	2	3	2	2
Indigenous FTE staff (f)	FTE	2	1	10	10	9	8
Assets by value							
Land	\$'000	25 850	27 681	27 681	27 685	23 950	23 950
Buildings and fittings	\$'000	40 857	36 368	38 233	38 115	62 850	62 763
Other	\$'000	3 396	5 360	4 720	6 935	11 105	12 714
Total value of assets	\$'000	70 103	69 409	70 634	72 735	97 905	99 427

(a) The Australian Federal Police (AFP) is exempt from paying payroll tax.

TABLE 6A.7

Table 6A.7 **Police service expenditure, staff and asset descriptors, ACT**

<i>Unit</i>	<i>2007-08</i>	<i>2008-09</i>	<i>2009-10</i>	<i>2010-11</i>	<i>2011-12</i>	<i>2012-13</i>
(b) The ACT does not pay payroll tax, however a 'notional' payroll tax rate for the ACT has been estimated.						
(c) User cost of capital is calculated at an opportunity cost of 8 per cent per annum on total value of assets (excluding land).						
(d) Comprises salaries and payments in the nature of salary, other recurrent expenditure, and capital expenditure.						
(e) Comprises salaries and payments in the nature of salary, other recurrent expenditure, depreciation, and the user cost of capital.						
(f) During 2009-10, the AFP (incorporating ACT Policing) improved Indigenous status recording. Data now capture all Indigenous members and account for the FTE increase in 2009-10 from previous years.						

– Nil or rounded to zero.

Source: ACT Government (unpublished).

TABLE 6A.8

Table 6A.8 Police service expenditure, staff and asset descriptors, NT (a)

	<i>Unit</i>	<i>2007-08</i>	<i>2008-09</i>	<i>2009-10</i>	<i>2010-11</i>	<i>2011-12</i>	<i>2012-13</i>
Expenditure (b)							
Recurrent expenditure							
Salaries and payments in the nature of salaries							
Salaries and related payments	\$m	135.9	152.8	169.1	182.3	194.5	204.3
Superannuation	\$m	13.2	15.3	16.3	17.4	18.3	20.3
Payroll tax (d)	\$m	8.3	8.9	9.8	10.2	9.9	10.2
Total salaries and payments	\$m	157.4	177.0	195.2	209.9	222.7	234.8
Other recurrent expenditure	\$m	46.6	55.5	55.5	55.6	61.2	62.6
Depreciation(c)	\$m	7.0	8.1	9.2	12.3	14.7	15.3
Total recurrent expenditure	\$m	211.1	240.6	259.9	277.8	298.6	312.7
Net recurrent expenditure							
Revenue from own sources (ROS) (k)	\$m	27.0	26.8	35.4	41.6	63.4	45.2
Total recurrent expenditure less ROS and payroll tax	\$m	175.7	204.9	214.6	226.0	225.3	257.2
Capital expenditure							
User cost of capital (e)	\$m	9.1	9.3	12.4	18.8	19.2	19.0
Capital expenditure (f)	\$m	18.9	14.0	121.9	277.1	15.1	32.0
Expenditure aggregates							
Total cash expenditure (g)	\$m	222.9	246.5	372.6	542.6	299.0	329.4
Total accrual costs (h)	\$m	220.2	249.9	272.2	296.6	317.8	331.7
Staffing costs							
Average police staff costs	\$	146 943	152 367	162 904	167 189	171 546	171 705
Average non-police staff costs	\$	38 674	37 284	37 330	40 762	49 876	49 877

TABLE 6A.8

Table 6A.8 Police service expenditure, staff and asset descriptors, NT (a)

	<i>Unit</i>	<i>2007-08</i>	<i>2008-09</i>	<i>2009-10</i>	<i>2010-11</i>	<i>2011-12</i>	<i>2012-13</i>
Staff by Indigenous and operational status (i)							
Operational FTE staff							
Sworn	FTE	904	995	1 045	1 107	1 099	1 187
Civilian	FTE	209	254	248	284	293	258
Other (j)	FTE	216	223	235	223	228	206
Operational FTE staff	FTE	1 329	1 472	1 528	1 614	1 620	1 651
Non-operational FTE staff							
Sworn	FTE	27	29	23	7	28	8
Civilian	FTE	50	38	55	48	47	70
Other (j)	FTE	58	48	31	24	21	60
Non-operational FTE staff	FTE	135	115	109	79	96	138
Total staff	FTE	1 464	1 587	1 637	1 693	1 716	1 789
Indigenous FTE staff							
Operational	FTE	115	120	132	129	124	113
Non-operational	FTE	2	11	5	–	3	9
Indigenous FTE staff	FTE	117	131	137	129	127	122
Assets by value (f)							
Land	\$'000	6 202	6 202	9 253	10 118	10 118	9 981
Buildings and fittings	\$'000	83 075	85 965	121 295	192 152	188 963	197 396
Other	\$'000	30 947	30 338	33 191	42 832	50 606	40 305
Total value of assets	\$'000	120 224	122 505	163 739	245 102	249 687	247 682

(a) The NT Police are part of a tri-service agency incorporating the NT Fire and Rescue Service and the NT Emergency Service. Where possible, all expenditure directly relating to the non-police arms of the department has been excluded.

(b) Based on actuarial advice on the cost of the schemes, not actuals.

TABLE 6A.8

Table 6A.8 **Police service expenditure, staff and asset descriptors, NT (a)**

<i>Unit</i>	<i>2007-08</i>	<i>2008-09</i>	<i>2009-10</i>	<i>2010-11</i>	<i>2011-12</i>	<i>2012-13</i>
(c) Depreciation is calculated using a straight-line method.						
(d) Payroll tax decreased from 5.9% to 5.5% in 2011-12.						
(e) User cost of capital is calculated at an opportunity cost of 8 per cent per annum on total value of assets (excluding land).						
(f) For the NT, capital expenditure and assets data for 2009-10 include asset revaluations across the land, and buildings and fittings, categories. In 2010-11, further revaluations took place. Capital expenditure in 2012-13 includes completion of Gapuwiyak Police Station and upgrades to Alice Springs, Mataranka, Alice Springs, Katherine Police Stations and the Peter McAuley centre.						
(g) Comprises salaries and payments in the nature of salary, other recurrent expenditure, and capital expenditure.						
(h) Comprises salaries and payments in the nature of salary, other recurrent expenditure, depreciation, and the user cost of capital.						
(i) Structure changes have impacted this data. Some non operational units have been moved to operational units.						
(j) Includes police auxiliaries and Aboriginal community police officers. – Nil or rounded to zero. na Not available.						
(k) The revenue in 2012-13 reflects a change for National Partnership Agreements.						

Source: NT Government (unpublished).

TABLE 6A.17

Table 6A.17 **Indigenous, sworn and unsworn police staff (a), (b),(c)**

	<i>Unit</i>	<i>NSW</i>	<i>Vic</i>	<i>Qld</i>	<i>WA</i>	<i>SA</i>	<i>Tas</i>	<i>ACT</i>	<i>NT</i>
Indigenous staff as proportion of total staff									
2007-08	%	1.5	na	2.3	2.0	1.2	1.8	0.2	7.3
2008-09	%	1.6	na	2.3	1.8	1.1	1.8	0.1	8.3
2009-10	%	1.7	0.2	2.3	2.0	1.0	1.8	1.1	8.4
2010-11	%	2.4	0.3	2.3	1.7	1.0	1.6	1.0	7.6
2011-12	%	2.4	0.3	2.2	1.5	1.0	1.7	0.9	7.4
2012-13	%	2.1	0.3	2.4	1.6	0.9	1.6	0.8	6.8
Representation of Indigenous people among all people aged 20–64 years (31 Dec 2012)									
Indigenous people (d)	no.	102 039	23 481	102 712	48 509	19 124	12 857	3 031	43 915
All people	000	6 053.6	4 763.5	3 717.4	2 014.7	1 391.8	417.9	317.4	146.3
Indigenous % of pop'n.	%	1.7	0.5	2.8	2.4	1.4	3.1	1.0	30.0

- (a) Indigenous staff numbers relate to those staff who self-identify as being of Aboriginal and/or Torres Strait Islander descent. Information on Indigenous status is collected only at the time of recruitment.
- (b) Data comprise all FTE staff except in NSW prior to 2007-08, and the NT from 2007-08, where data are based on a headcount at 30 June.
- (c) Data should be regarded as indicative only. Indigenous staff unable to be separated prior to 2009-10.
- (d) Indigenous population estimate at 31 Dec 2012 derived as the average of the 30 June 2012 and 30 June 2013 estimates.

na Not available.

Source: State and Territory governments (unpublished); ABS *Experimental Estimates and Projections, Indigenous Australians* (Series B), Cat. no. 3238.0; ABS *Australian Demographic Statistics*, Cat. no. 3101.0 (unpublished).

TABLE 6A.38

Table 6A.38 **Number of deaths in police custody and custody-related operations, 2007-08 to 2012-13 (a), (b)**

Year	NSW (c)	Vic	Qld	WA	SA	Tas	ACT	NT	Aust
Non-Indigenous deaths in police custody and custody-related operations									
2007-08	7	8	4	4	2	1	–	3	29
2008-09	6	3	7	7	4	–	1	1	29
2009-10	3	6	6	1	1	1	1	2	21
2010-11	5	1	6	1	2	2	1	–	18
2011-12	10	6	8	5	3	–	–	–	32
2012-13	5	2	3	3	–	–	–	–	13
Indigenous deaths in police custody and custody-related operations									
2007-08	–	–	1	–	2	–	–	2	5
2008-09	–	–	1	1	2	–	–	4	8
2009-10	2	–	–	2	–	–	–	2	6
2010-11	1	–	1	5	–	–	–	–	7
2011-12	–	–	1	–	–	–	–	2	3
2012-13	–	–	1	3	1	–	–	–	5
Total deaths in police custody and custody-related operations									
2007-08	7	8	5	4	4	1	–	5	34
2008-09	6	3	8	8	6	–	1	5	37
2009-10	5	6	6	3	1	1	1	4	27
2010-11	6	1	7	6	2	2	1	–	25
2011-12	10	6	9	5	3	–	–	2	35
2012-13	5	2	4	6	1	–	–	–	18
Total number of deaths 2007-08 to 2012-13									
Non-Indigenous	36	26	34	21	12	4	3	6	142
Indigenous	3	–	5	11	5	–	–	10	34
All people	39	26	39	32	17	4	3	16	176

(a) Deaths in police custody include deaths in institutional settings (for example, police stations/lockups and police vehicles) or during transfer to or from such an institution; or deaths in hospitals following transfer from an institution; and other deaths in police operations where officers are in close contact with the deceased (for example, most raids and shootings by police). Deaths in custody-related operations include situations where officers did not have such close contact with the person as to be able to significantly influence or control the person's behaviour (for example, most sieges and most cases where officers were attempting to detain a person, such as pursuits).

(b) The AIC deaths in police custody and custody-related operations data are sometimes revised slightly by the AIC for historic years and might differ from those in earlier reports.

– Nil or rounded to zero.

(c) At the time of providing data, numbers for NSW Police for 2012-13 are provisional and unconfirmed.

Source: Australian Institute of Criminology (various years), *Australian Deaths in Custody and Custody-related Police Operations*, AIC, Canberra; Australian Institute of Criminology (unpublished).